

OVERVIEW

The following pages explain and illustrate how the current proposals differ from the consented scheme in more detail and focus on the more significant parts of the proposal.

- ▶ The first part of the document describes the proposed changes to the main house (ground, first and second floor).
- ▶ The second part describes the proposed changes to the coach house (ground, and first floor).

For ease of reference, larger scale of the key drawings are collating in the following appendices:

Appendix 1 - plans of the currently consented scheme by Paul Davis Architecture with Tsolakis Architects. They describe in particular the approved modifications to the existing fabric.

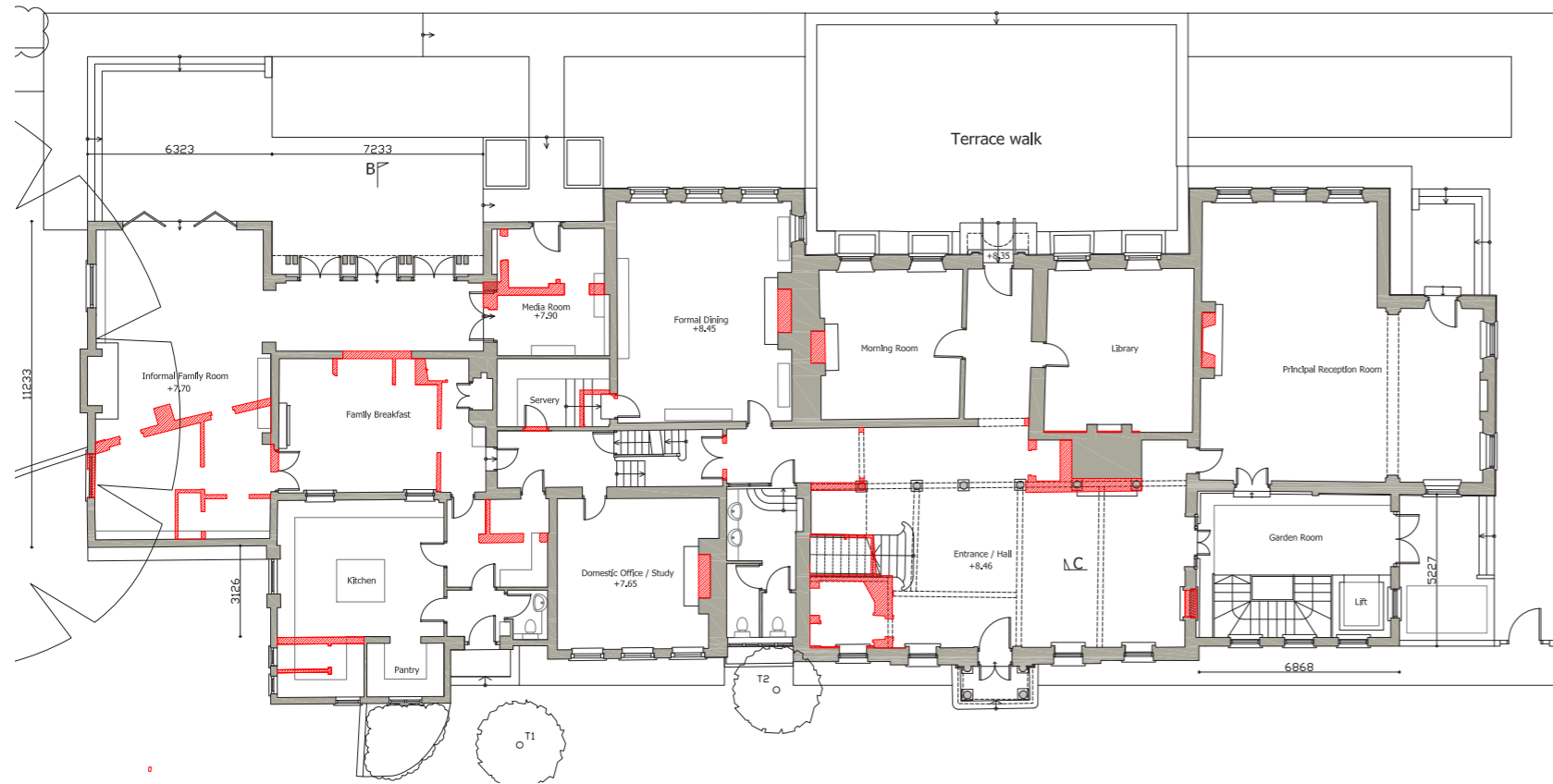
Appendix 2 - plans highlighting the changes and variations from the currently consented scheme and the new proposal.

Appendix 3 - plans highlighting the new proposal in the context of the retained elements of fabrics.

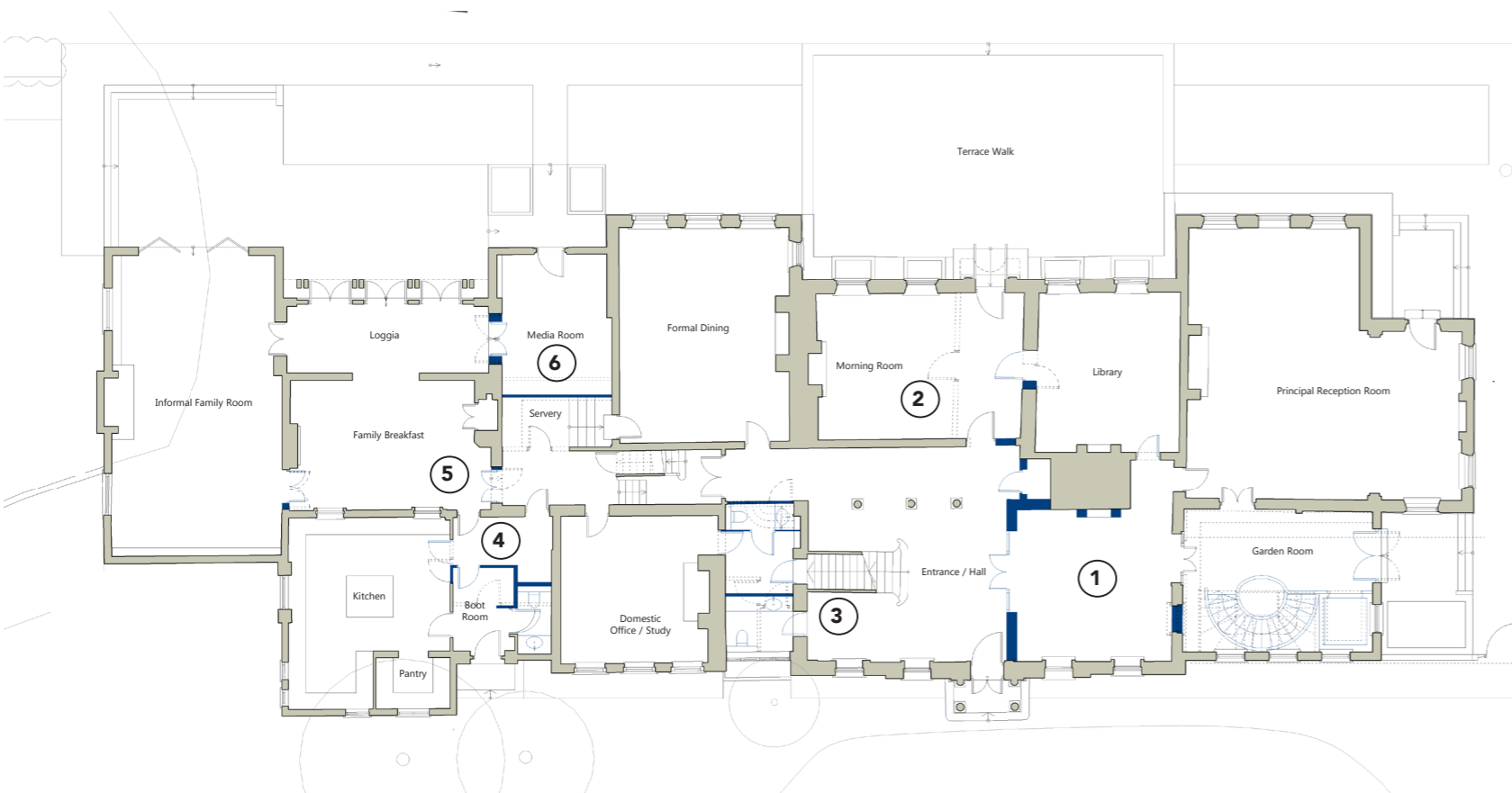
PART ONE
CHANGES TO THE MAIN HOUSE

MAIN HOUSE - GROUND FLOOR

MAIN HOUSE GROUND FLOOR



Consented scheme as per current
planning permission
(in red consented fabric alterations)



New layout
(in blue revised elements)

Ground Floor Proposed changes:

- GF1. Rebuild original partition to restore the historic plan form and reinstate original chimney place
- GF2. Restore 18th Century plan form and reinstate original panelling
- GF3. Raise roof portion above the toilet to allow same level access directly from entrance hall
- GF4. Minor internal changes to Boot room to improve entry amenity
- GF5. Introduce double door to enhance circulation and access
- GF6. Minor internal change to Media Room and minor change in floor level to enhance circulation and access

Rebuild original partition to restore the historic plan form and reinstate original chimney place and retain original fabric previously consented to be removed.



Proposed Change GF1 to Entrance Hall

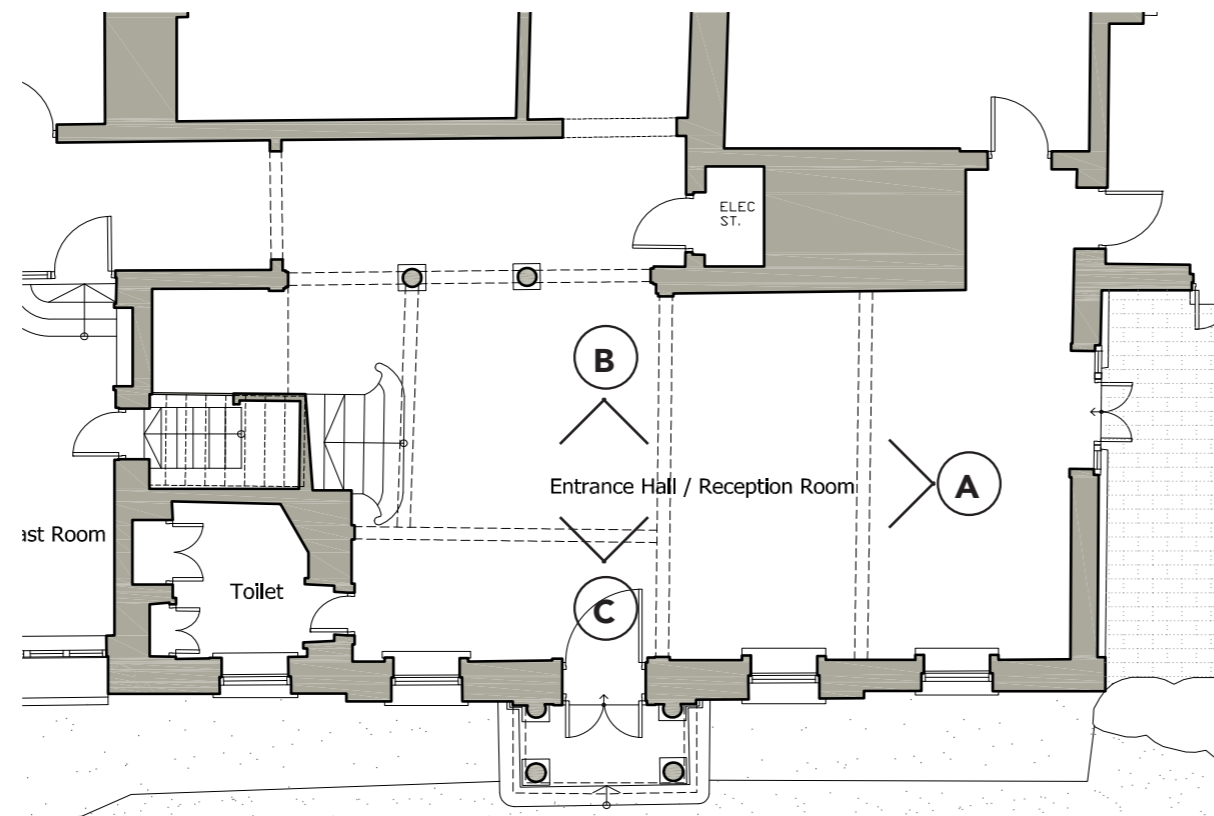
- APPROVED LAYOUT - 19/0676/FUL
- REMOVED ITEMS FROM APPROVED LAYOUT
- REVISED ELEMENTS FOR NEW PROPOSAL



A

B

C



Existing plan

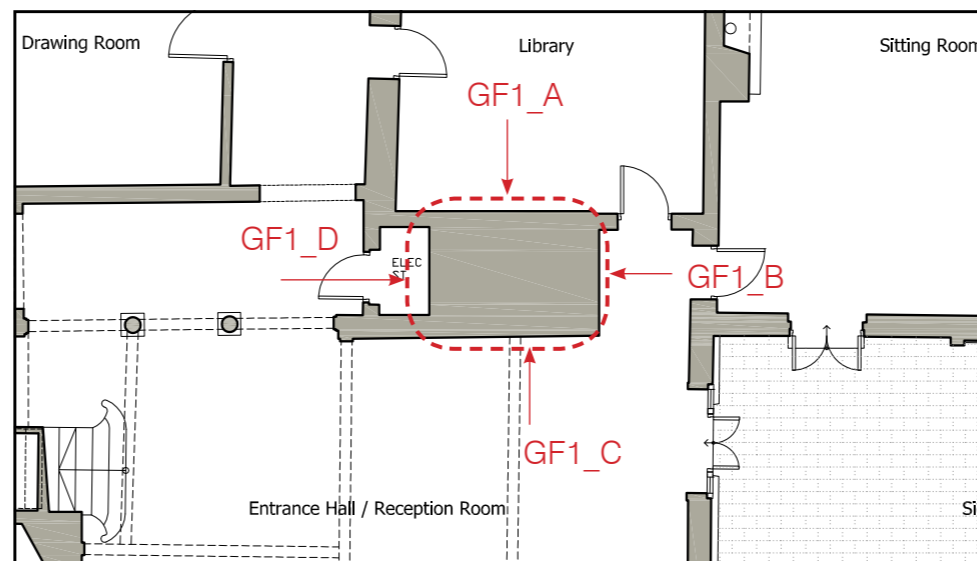
Existing condition of the Entrance Hall:

The current condition of the entrance hall reveals very unusual proportions. Many original decorative elements have been removed and its original cellular 18th century plan form has been lost.

Existing downstand beams give an indication of the original location of structural partitions that have been removed over the years.



GF1_A Opening up location



GF1. Disused flue examined

Previous investigation works revealed an existing chimney opening in the Entrance hall. Please refer to GF1_C in particular. Photographs and diagram taken from DAS of consented scheme



GF1_C Opening up location



GF1_A Picture 1



GF1_A Picture 2



GF1_C Picture 1



GF1_C Picture 2