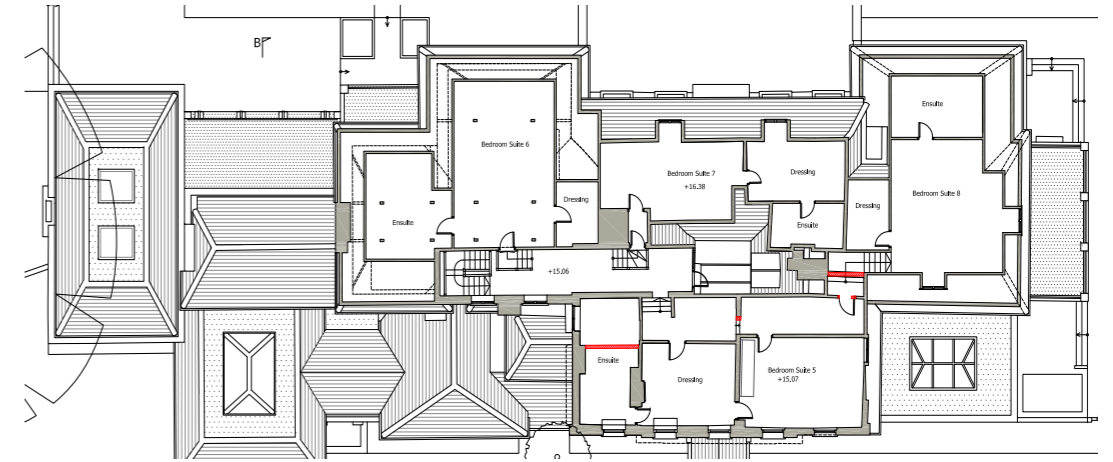


**Consented Section AA as per current planning permission**

The currently consented Section AA omits the conversion of Bedroom 6, approved in the consented second floor plan. The section also illustrates a confused elevation of the south facing first floor front rooms.

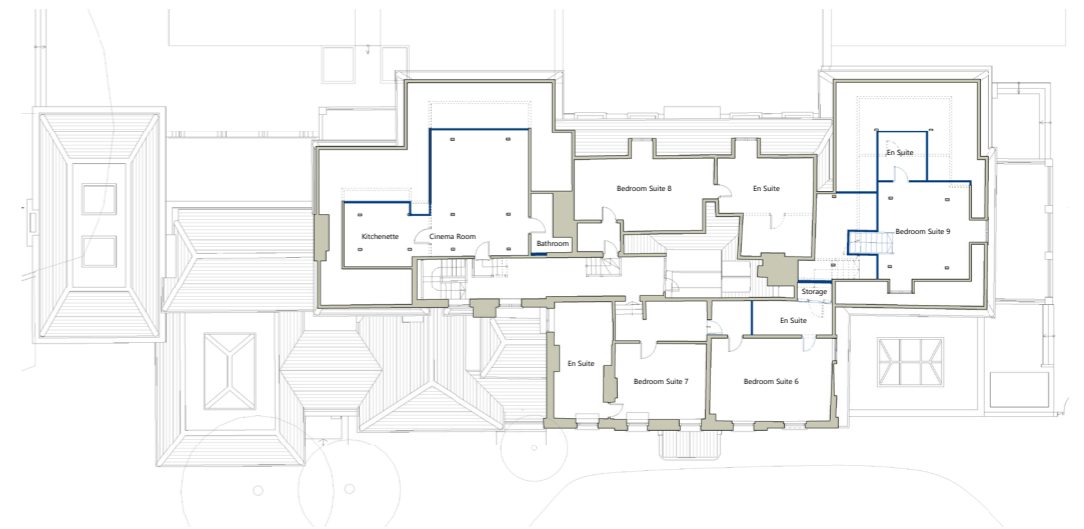


**Consented scheme as per current planning permission - second floor  
(in red consented fabric alterations)**



**New proposed section AA**

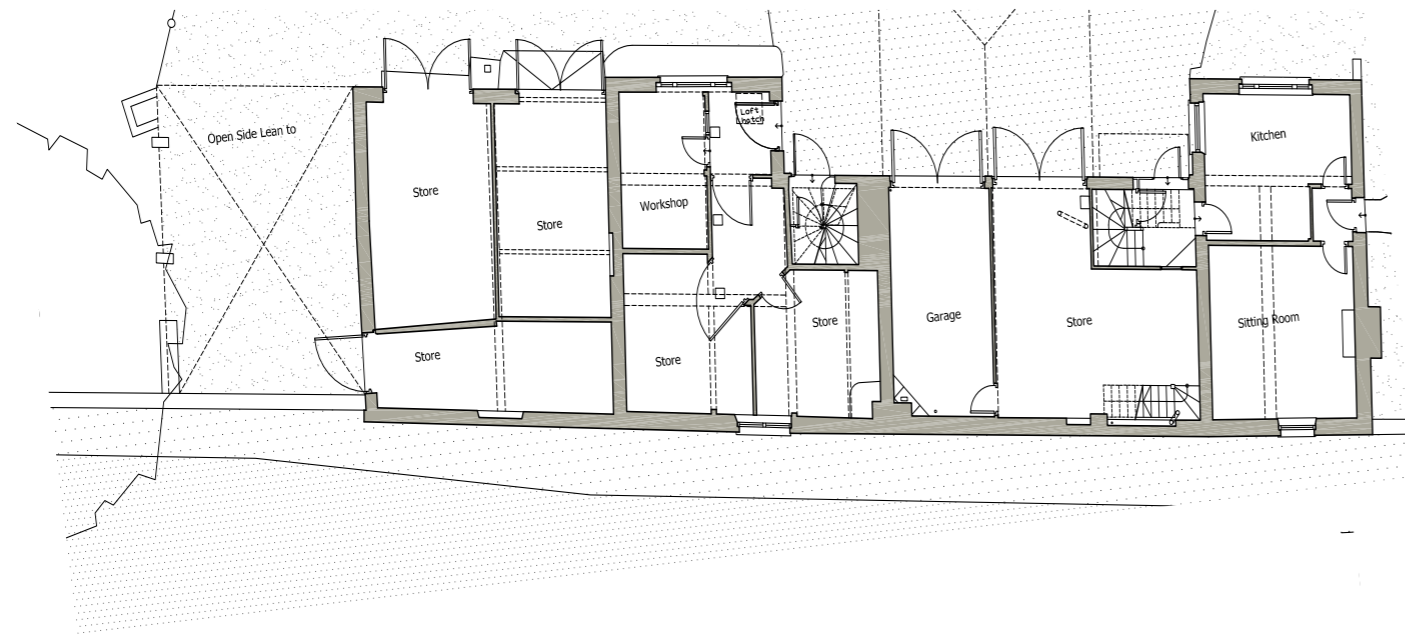
The proposed section amends the omission made in the second floor and rectifies the elevation of the south facing first floor front rooms.



**New layout - second floor  
(in blue revised elements)**

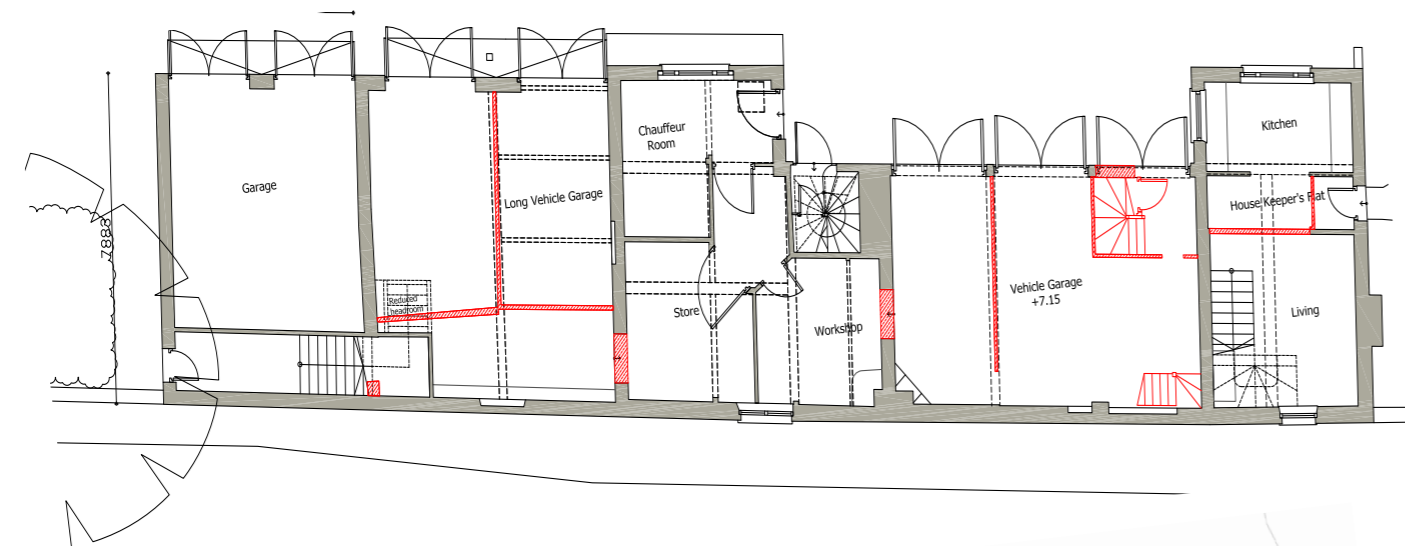
**PART TWO**  
**CHANGES TO THE COACH HOUSE**

# COACH HOUSE GROUND FLOOR



**Existing**

The Coach House has had numerous 20 Century alterations. Very few changes to the Coach House are proposed.



**Consented scheme as per current planning permission  
(in red consented fabric alterations)**

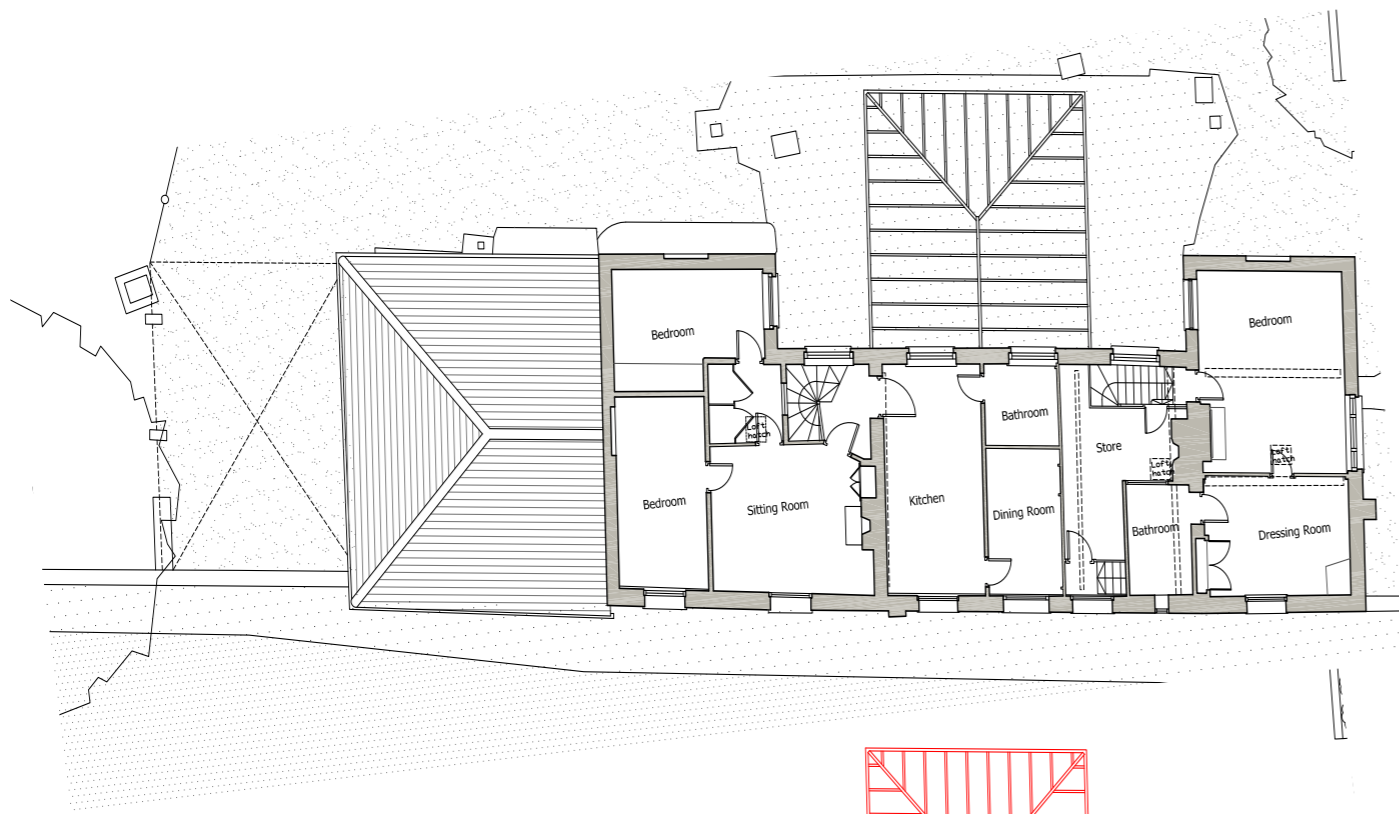


**New layout  
(in blue revised elements,  
in dotted previously consented)**

### Coach House Ground Floor Proposed changes:

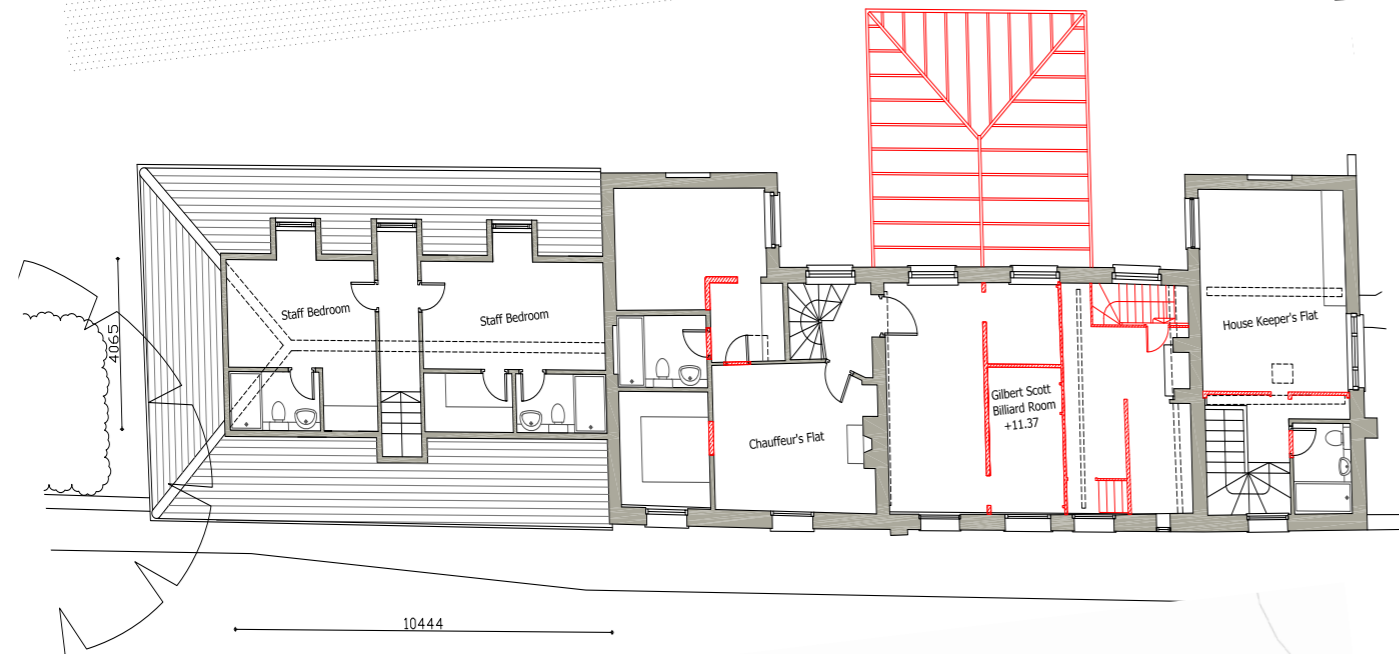
1. Minor internal changes to Coach house Living area
2. Retain existing fabric, previously removed
3. Bi fold doors introduced in lieu of garage doors
4. Existing wall removed in adjacent garages
5. Plan adjusted to reflect existing site boundary wall, to be maintained.

# COACH HOUSE FIRST FLOOR

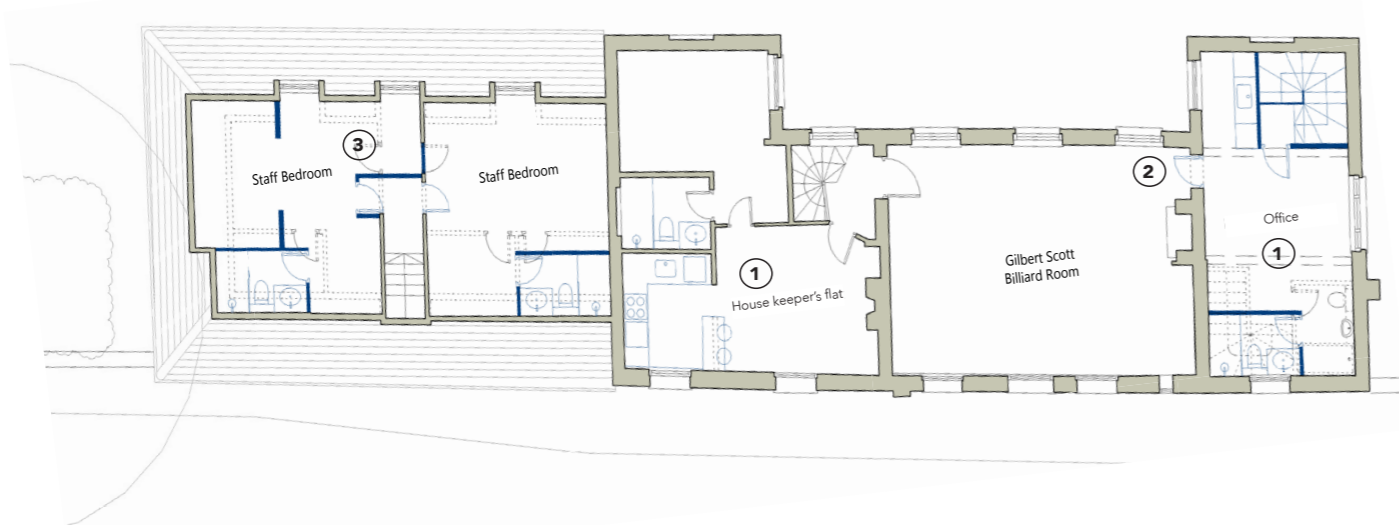


**Existing**

The Coach House has had numerous 20 Century alterations. Very few changes to the Coach House are proposed. All changes on the first floor are internal .



**Consented scheme as per current  
planning permission  
(in red consented fabric alterations)**



**New layout  
(in blue revised elements,  
in dotted previously consented)**

**Couch House First Floor Proposed changes:**

1. Minor internal layout changes to retain existing beam
2. Retain existing fabric, previously removed.
3. Minor internal layout changes to new construction

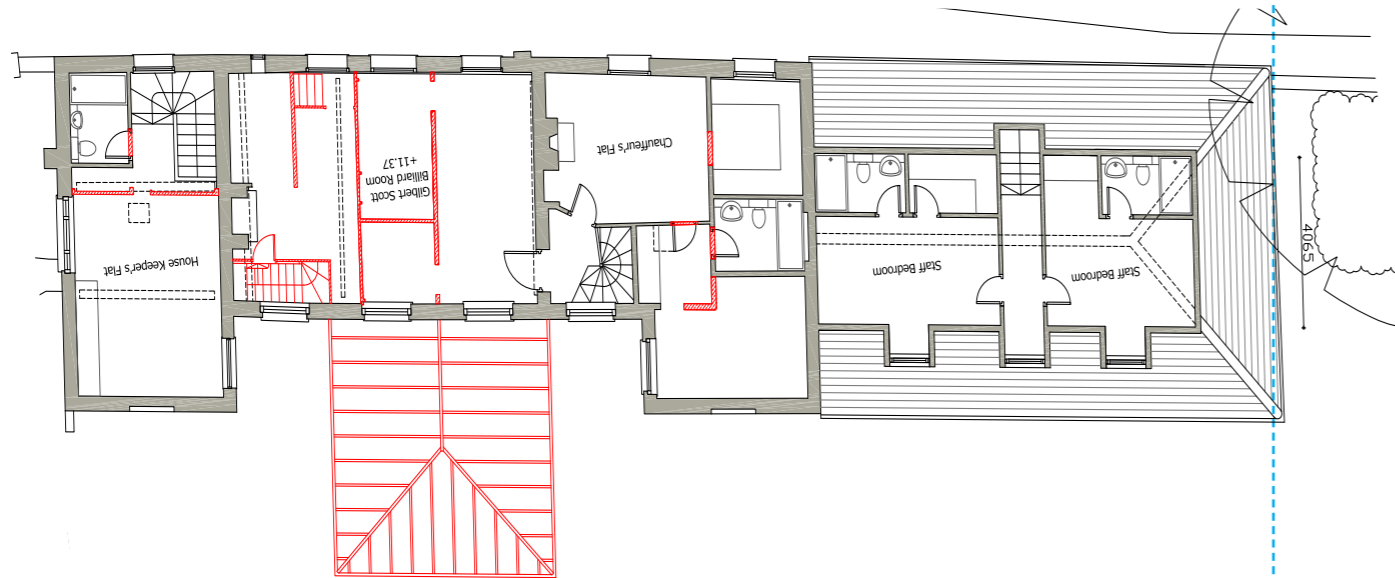
# COACH HOUSE FRONT ELEVATION



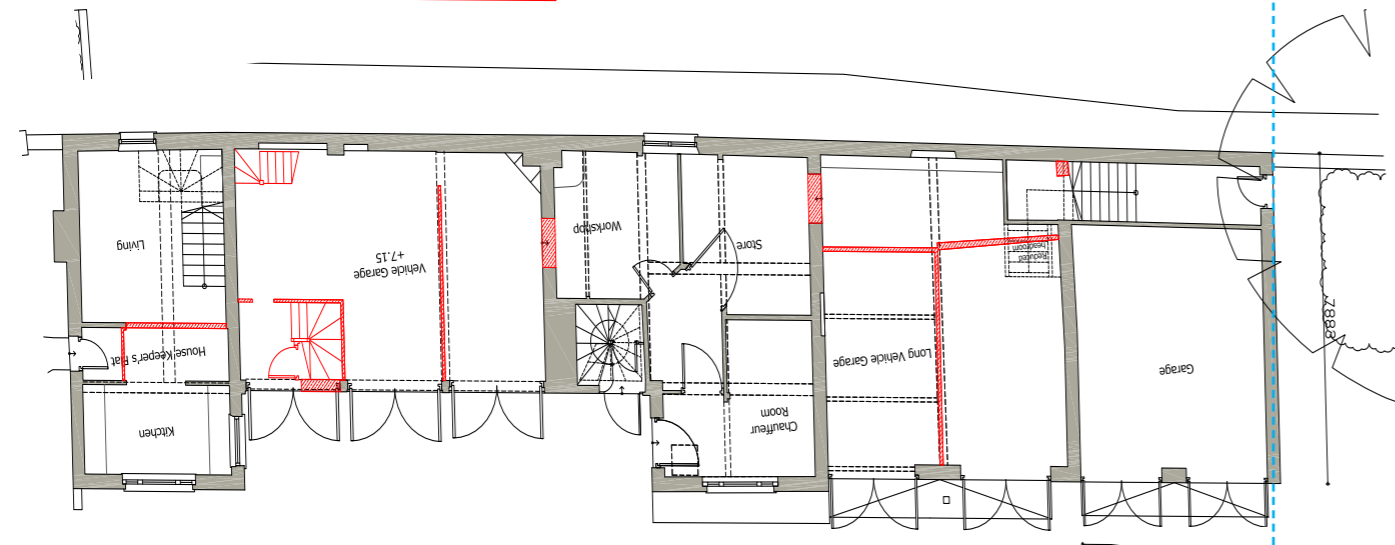
## Consented scheme elevation as per current planning permission

The Consented scheme for the coach house presents an anomaly that was discovered while drafting this application.

The plans of the consented scheme for the coach house and the elevations do not correspond.



## Consented First floor scheme as per current planning permission



## Consented Ground floor scheme as per current planning permission



# COACH HOUSE FRONT ELEVATION



EAST ELEVATION (APPROVED) - SCALE 1:100

**Consented scheme elevation  
as per current planning permission**



EAST ELEVATION (REVISED PROPOSAL) - SCALE 1:100

**Proposed elevation  
(in blue revised elements,  
in dotted previously consented)**

The new proposal assumes that the approved plans take precedence over the elevations as all plans in the approved documents are consistent to each other and present a smaller volume than the consented elevations.



**Proposed First floor  
(in blue revised elements,  
in dotted previously consented)**



**Proposed Ground floor  
(in blue revised elements,  
in dotted previously consented)**