

Notes  
 Manor Road, Richmond Baseline (Existing) Model  
 - 1 in 100 year plus 40% Climate Change  
 Maximum Depths (m) with velocity vector arrows  
 Contains OS data © Crown copyright and  
 database right (2022)

REVISIONS  
 P01 - First Issue

FIRST ISSUE EXAMPLE				
REV.	DRAWN BY	CHECKED BY	APPROVED BY	DATE
P01	LW	SM	SM	11/11/2022
REVISION NOTES/COMMENTS				
REV.	DRAWN BY	CHECKED BY	APPROVED BY	DATE
-	-	-	-	-

**Hydrock**

Over Court Barns,  
 Over Lane,  
 Almondsbury,  
 Bristol,  
 BS32 4DF  
 t. +44(0) 1454 619533  
 e. bristol@hydrock.com

CLIENT  
 Avanton Richmond Developments Ltd

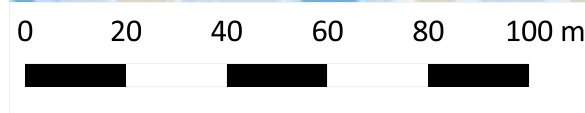
PROJECT  
 Homebase, 84 Manor Road, North Sheen,  
 Richmond

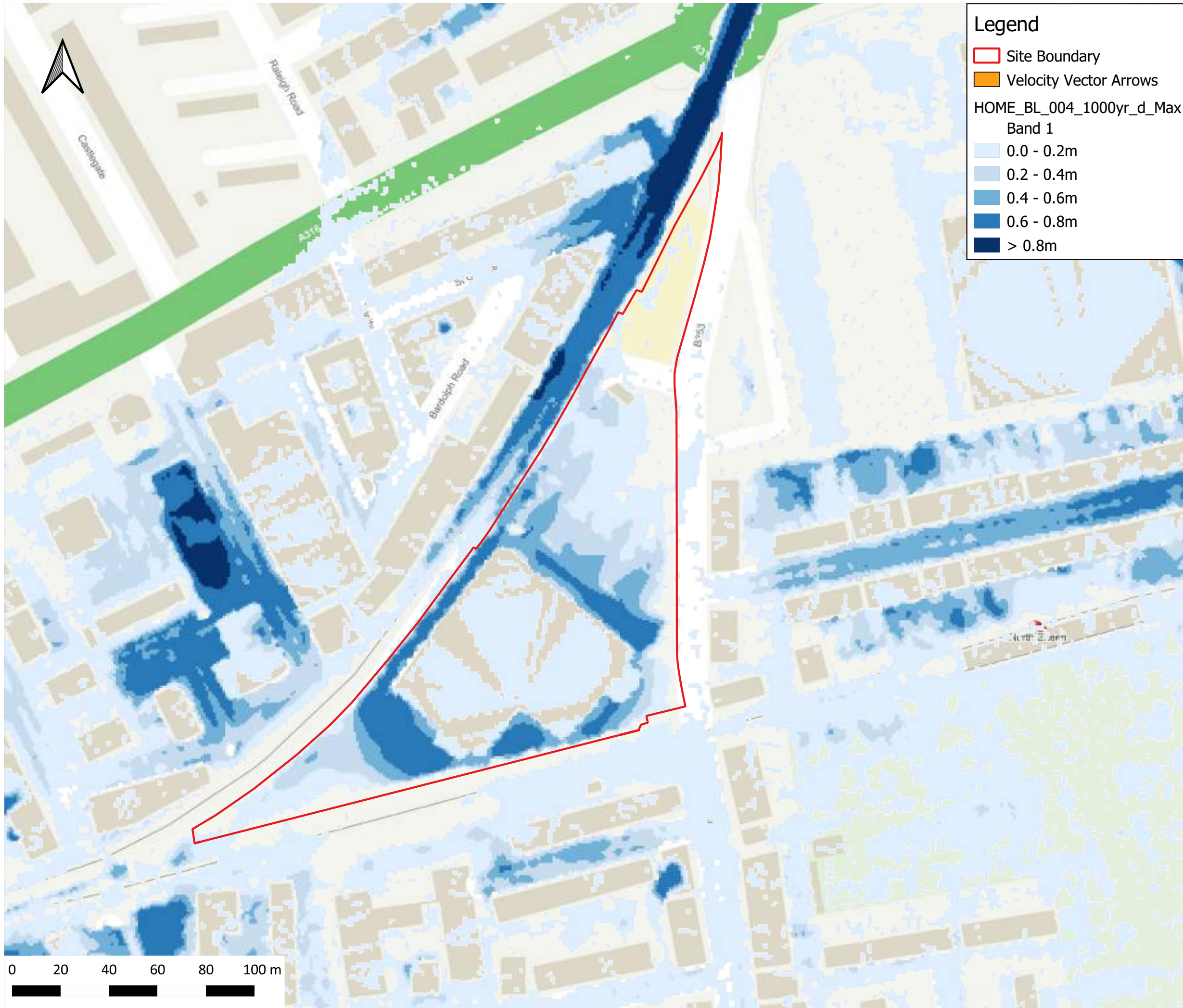
TITLE  
 Baseline Scenario 1 in 100 year + 40% CC  
 Maximum Flood Depths

HYDROCK PROJECT NO. 25608-IOCB	SCALE @ A3 1:1,500
-----------------------------------	-----------------------

PURPOSE OF ISSUE SUITABLE FOR INFORMATION	STATUS S2
--	--------------

DRAWING NO. 25608-HYD-XX-XX-DR-FR-0003	REVISION P01
---	-----------------





**Legend**

- Site Boundary
- Velocity Vector Arrows

HOME\_BL\_004\_1000yr\_d\_Max  
Band 1

- 0.0 - 0.2m
- 0.2 - 0.4m
- 0.4 - 0.6m
- 0.6 - 0.8m
- > 0.8m

Notes  
 Manor Road, Richmond Baseline (Existing) Model  
 - 1 in 1000 year Maximum Depths (m)  
 Contains OS data © Crown copyright and  
 database right (2022)

REVISIONS  
 P01 - First Issue

FIRST ISSUE EXAMPLE				
REV.	DRAWN BY	CHECKED BY	APPROVED BY	DATE
P01	LW	SM	SM	11/11/2022

REVISION NOTES/COMMENTS				
REV.	DRAWN BY	CHECKED BY	APPROVED BY	DATE
-	-	-	-	-

**Hydrock**

Over Court Barns,  
 Over Lane,  
 Almondsbury,  
 Bristol,  
 BS32 4DF  
 t. +44(0) 1454 619533  
 e. bristol@hydrock.com

CLIENT  
 Avanton Richmond Developments Ltd

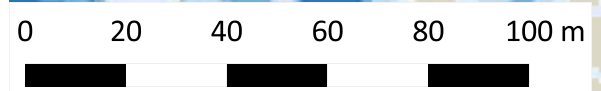
PROJECT  
 Homebase, 84 Manor Road, North Sheen,  
 Richmond

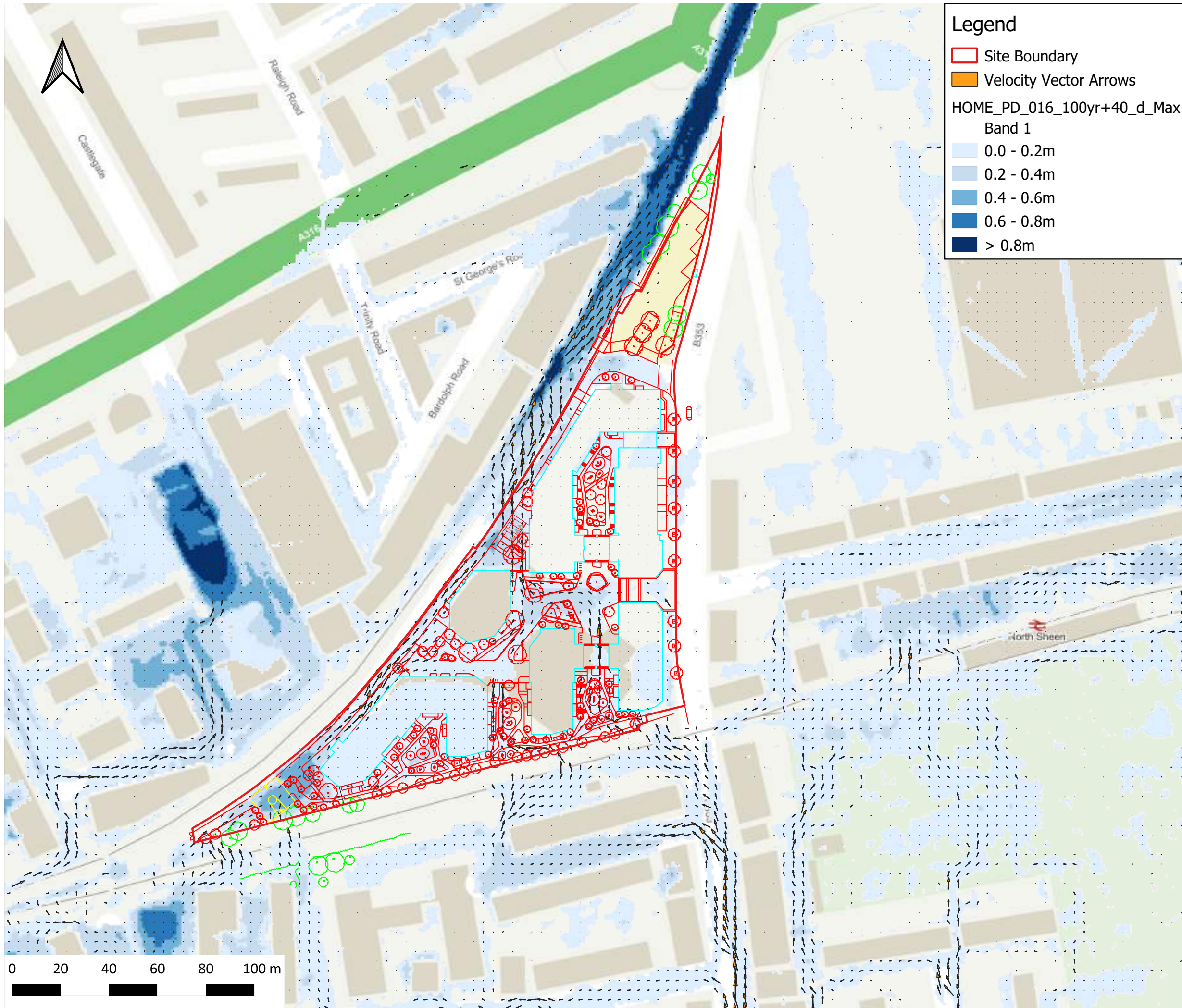
TITLE  
 Baseline Scenario, 1 in 1000 year  
 Maximum Flood Depths

HYDROCK PROJECT NO. 25608-IOCB	SCALE @ A3 1:1,500
-----------------------------------	-----------------------

PURPOSE OF ISSUE SUITABLE FOR INFORMATION	STATUS S2
--	--------------

DRAWING NO. 25608-HYD-XX-XX-DR-FR-0004	REVISION P01
---	-----------------





**Legend**

- Site Boundary
- Velocity Vector Arrows

HOME\_PD\_016\_100yr+40\_d\_Max  
Band 1

- 0.0 - 0.2m
- 0.2 - 0.4m
- 0.4 - 0.6m
- 0.6 - 0.8m
- > 0.8m

Notes  
 Manor Road, Richmond Post-Development  
 (Proposed) Model - 1 in 100 year plus 40% Climate  
 Change Maximum Depths (m) with velocity vector  
 arrows

Contains OS data © Crown copyright and  
 database right (2022)

REVISIONS  
 P01 - First Issue

FIRST ISSUE EXAMPLE				
REV.	DRAWN BY	CHECKED BY	APPROVED BY	DATE
P01	LW	SM	SM	11/11/2022

REVISION NOTES/COMMENTS				
REV.	DRAWN BY	CHECKED BY	APPROVED BY	DATE

**Hydrock**

Over Court Barns,  
 Over Lane,  
 Almondsbury,  
 Bristol,  
 BS32 4DF  
 t. +44(0) 1454 619533  
 e. bristol@hydrock.com

CLIENT  
 Avanton Richmond Developments Ltd

PROJECT  
 Homebase, 84 Manor Road, North Sheen,  
 Richmond

TITLE  
 Post-Development Scenario, 1 in 100 year  
 + 40% CC Maximum Flood Depths

HYDROCK PROJECT NO. 25608-IOCB	SCALE @ A3 1:1,500
-----------------------------------	-----------------------

PURPOSE OF ISSUE SUITABLE FOR INFORMATION	STATUS S2
--	--------------

DRAWING NO. 25608-HYD-XX-XX-DR-FR-0005	REVISION P01
---	-----------------

