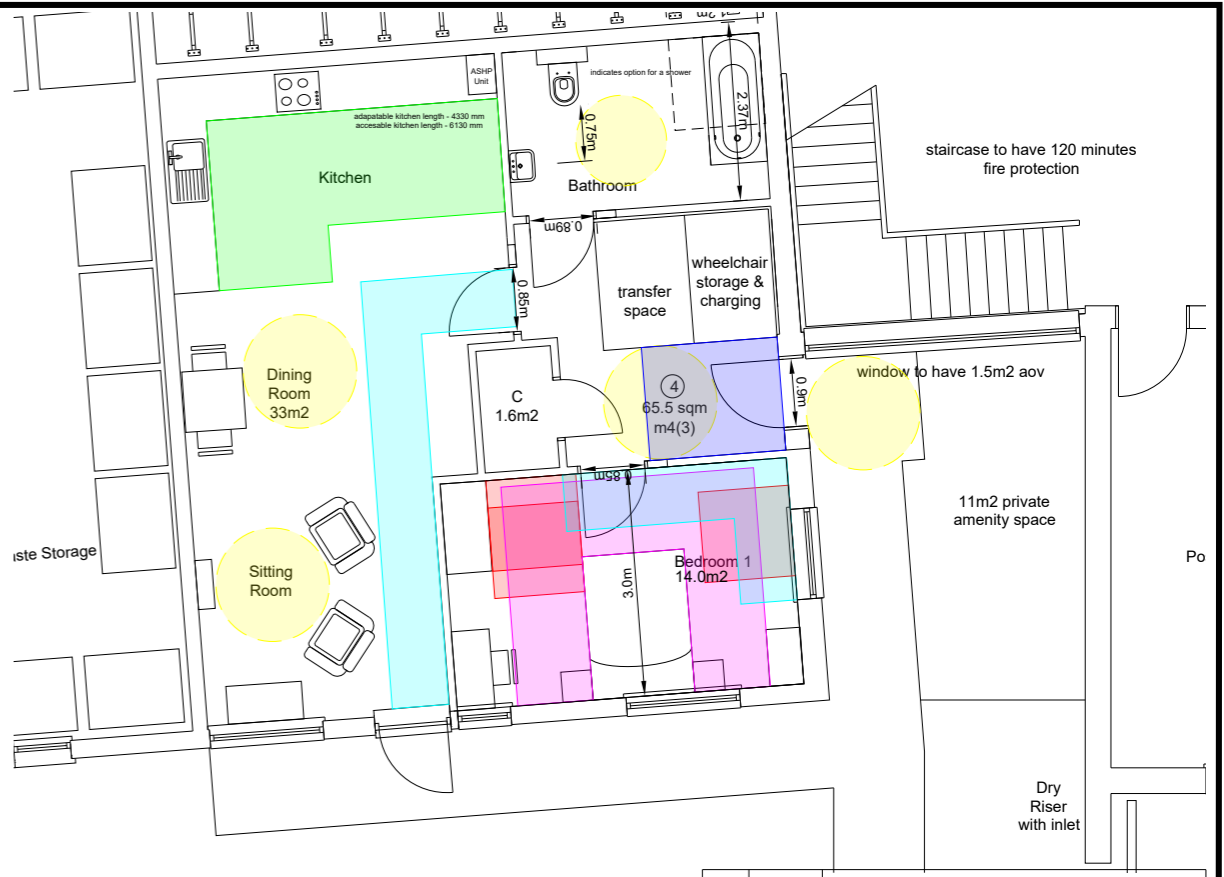




Plots 1-3 Ground Floor

- M4(2) Key**
- 300mm leading edge
 - 1200mm clear in front of kitchen units
 - 750mm clear space from bedroom door to window
 - 750mm clear space around bed



Plot 4 Ground Floor

- M4(3) Key**
- 1500mm circulation space
 - 1500mm clear in front of kitchen units
 - 750mm clear space from bedroom door to window
 - 1200 x 1200 manoeuvring space
 - 1000mm clear space around bed
 - 1800mm depth x 1500mm width inside the front door

Rev	Date	Description

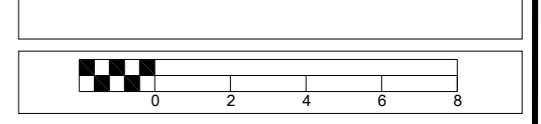


FLUENT
ARCHITECTURAL DESIGN SERVICES

69-71 WINDMILL ROAD, SUNBURY,
MIDDLESEX, TW16 7DT
TEL: 0800 0438838
E-MAIL: INFO@FLUENT-ADS.CO.UK
WEB: FLUENT-ADS.CO.UK

Kingston Bridge House
Church Grove, Hampton Wick

Plots 1-4 Detailed Floor Plans



Scale 1:100 @ A3	Dwg No. FLU.1191.3.33
Date 09.10.23	Rev F
Drawn N.Millin	