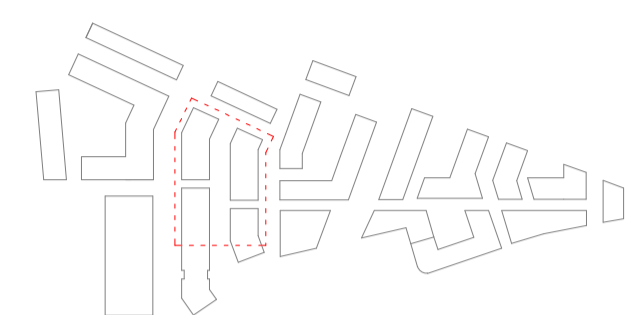
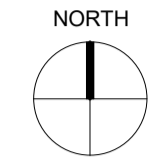
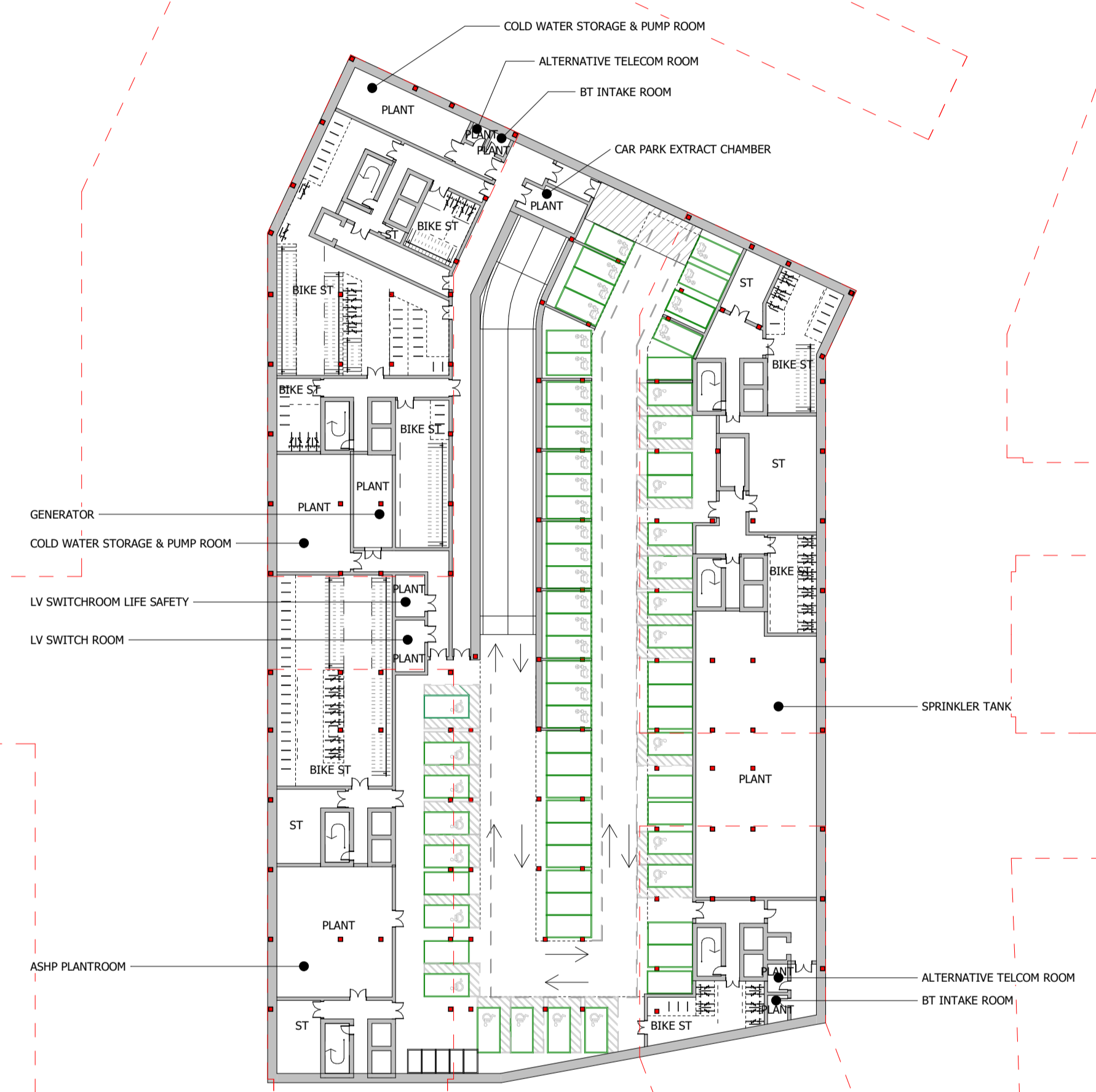


NOTES:
 DO NOT SCALE FROM THIS DRAWING. ALL DIMENSIONS TO BE CHECKED ON SITE. ALL OMISSIONS AND DISCREPANCIES TO BE REPORTED TO THE ARCHITECT IMMEDIATELY.
 ALL RIGHTS RESERVED. THIS WORK IS COPYRIGHT AND CANNOT BE REPRODUCED OR COPIED OR MODIFIED IN ANY FORM OR BY ANY MEANS, GRAPHIC ELECTRONIC OR MECHANICAL, INCLUDING PHOTOCOPYING WITHOUT THE WRITTEN PERMISSION OF SQUIRE AND PARTNERS ARCHITECTS.



- KEY**
- 67 Residential Spaces
 - 5 Motorbike Spaces
 - 649 Cycle Spaces

Amendments to basement layout to incorporate changes to waste strategy, fire strategy, and electric vehicle charging.



LBRUT 2 FIRE-LED DESIGN AMENDMENTS	03/11/23	RKB	G
LBRUT 2 APPLICATION AMENDMENTS	21/07/22	BJ	F
LBRUT 2 APPLICATION	04/02/22	BJ	E
DRAFT FINAL HYBRID SUBMISSION	19/01/22	RKB	D
GLA SUBMISSION	27/04/20	BJ	C
DRAFT GLA SUBMISSION	24/01/20	KH	B
FINAL DRAFT PLANNING APPLICATION	21/10/19	KH	A
LEGAL REVIEW	13/09/19	KH	-

Revision description	Date	Check	Rev

SQUIRE & PARTNERS

The Department Store
 248 Ferndale Road London SW9 8FR
 T: 020 7278 5555 F: 020 7239 0495

info@squireandpartners.com
 www.squireandpartners.com

Project
Stag Brewery
 Richmond

Drawing
PROPOSED DEVELOPMENT AREA 02
BASEMENT PLAN

Drawn	Date	Scale
RKL	06/09/19	1:500 @ A1 1:1000 @ A3
Job Number	Drawing number	Revision
18125	C645_Z2_P_B1_001	G

