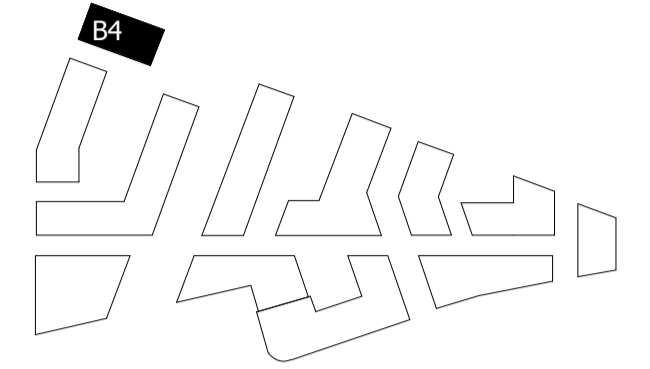


NOTES:

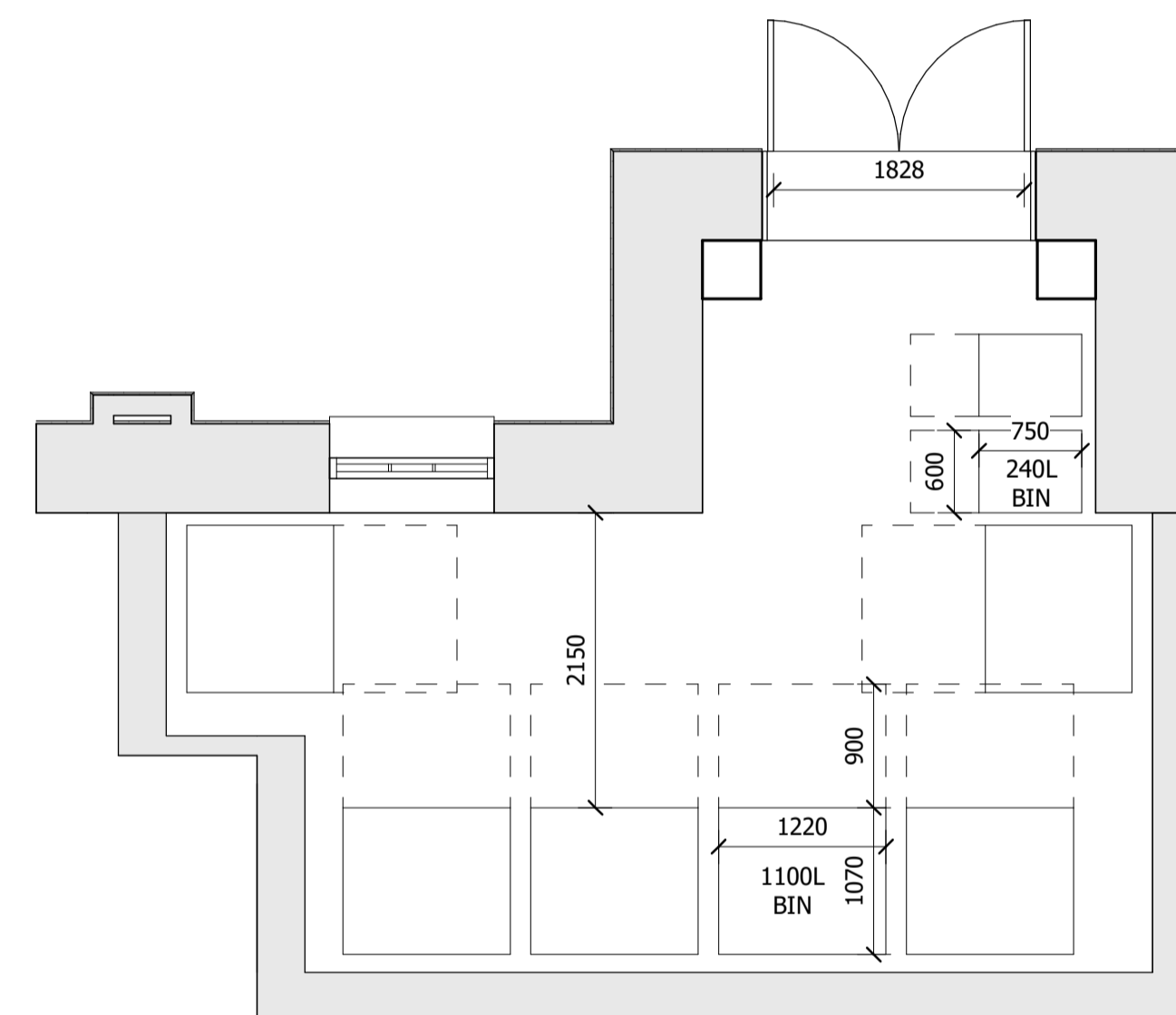
DO NOT SCALE FROM THIS DRAWING. ALL DIMENSIONS TO BE CHECKED ON SITE. ALL OMISSIONS AND DISCREPANCIES TO BE REPORTED TO THE ARCHITECT IMMEDIATELY.

ALL RIGHTS RESERVED. THIS WORK IS COPYRIGHT AND CANNOT BE REPRODUCED OR COPIED OR MODIFIED IN ANY FORM OR BY ANY MEANS, GRAPHIC ELECTRONIC OR MECHANICAL, INCLUDING PHOTOCOPIING WITHOUT THE WRITTEN PERMISSION OF SQUIRE AND PARTNERS ARCHITECTS.



NOTES:-

Building 04 refuse stores contain 6 1100L Eurobins and 2 240L food waste bins



REFUSE STORE LAYOUT AMENDED TO SUIT UPDATED REFUSE STRATEGY

INTERNAL LAYOUTS SHOWN ILLUSTRATIVELY ONLY

LBRUT 2 FIRE-LED DESIGN AMENDMENTS	03/11/23	RKB	F
LBRUT 2 APPLICATION AMENDMENTS	21/07/22	BJ	E
LBRUT 2 APPLICATION	04/02/22	BJ	D
GLA SUBMISSION	27/04/20	BJ	C
DRAFT GLA SUBMISSION	24/01/20	KH	B
FINAL DRAFT PLANNING APPLICATION	21/10/19	KH	A
LEGAL REVIEW	13/09/19	KH	-

Revision description	Date	Check	Rev

SQUIRE & PARTNERS

The Department Store
248 Ferndale Road London SW9 8FR
T: 020 7278 5555 F: 020 7239 0495

info@squireandpartners.com
www.squireandpartners.com

Project

Stag Brewery
Richmond

Drawing

BUILDING 04 - GROUND FLOOR
LEVEL REFUSE STORE PLAN

Drawn	Date	Scale
KHO	16/01/18	1:50 @ A1 1:100 @ A3

Job Number	Drawing number	Revision
18125	C645_B04_P_00_002	F

