

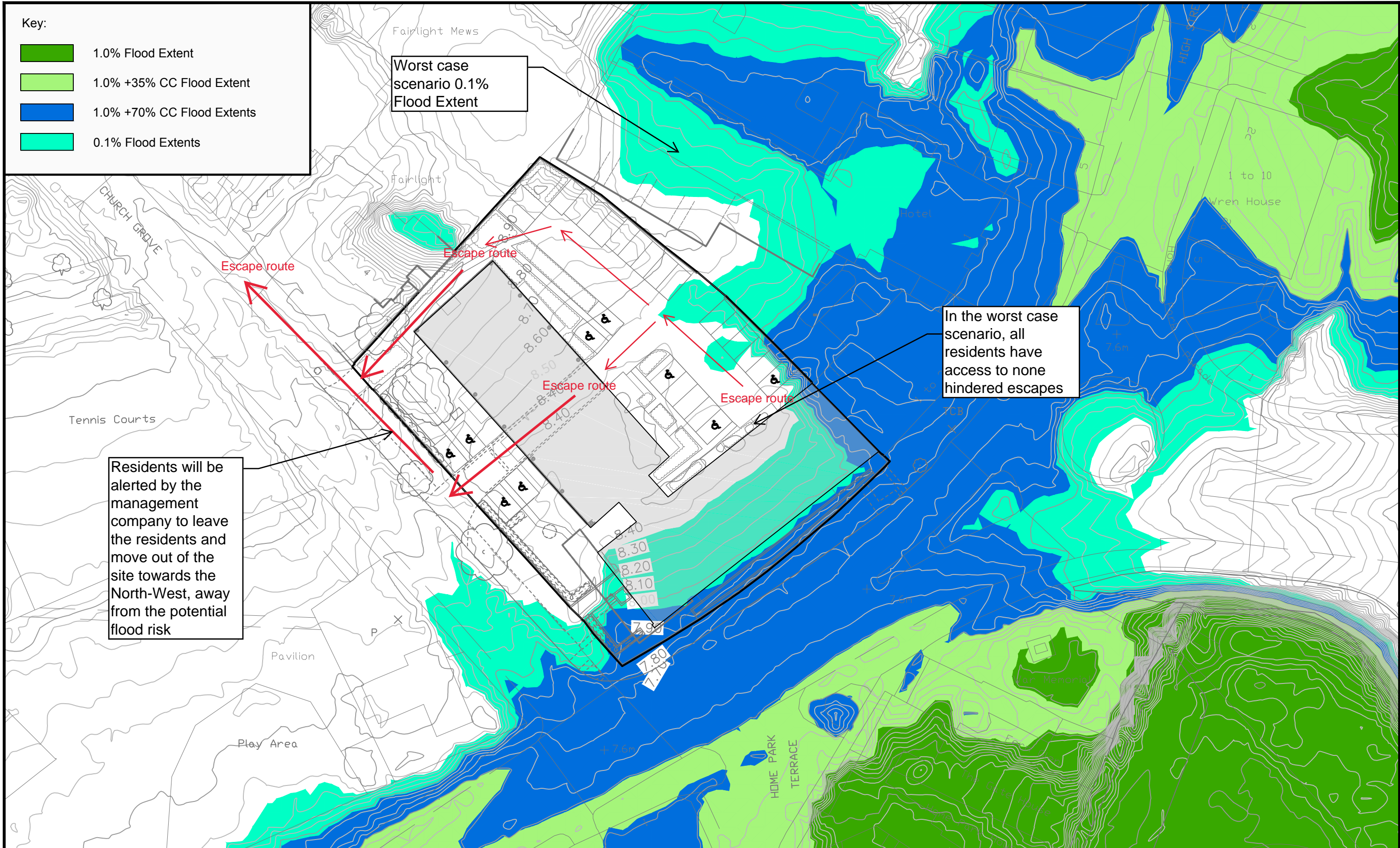
Key:

- 1.0% Flood Extent
- 1.0% +35% CC Flood Extent
- 1.0% +70% CC Flood Extents
- 0.1% Flood Extents

Worst case scenario 0.1% Flood Extent

In the worst case scenario, all residents have access to none hindered escapes

Residents will be alerted by the management company to leave the residents and move out of the site towards the North-West, away from the potential flood risk



Westcombe Group

Kingston Bridge House

EA Flood Extents Including Allowances for Climate Change

Drawing 201345/FEP/RS/KL/01 – Evacuation Plan, Flood Extents Including Climate Change

LANMOR Consulting
Civil Engineers & Transport Planning

Thorogood House, 34 Tolworth Close, Surbiton, Surrey, KT6 7EW
Telephone: 0208 339 7899 Fax: 0208 339 7898
E-mail: info@lanmor.co.uk
www.lanmor.co.uk

SCALE 1:500	DRAWN BY RS	PRJ No. 201345	DWG No. 201345/FEP/RS/KL/01
-------------	-------------	----------------	-----------------------------