

# TECHNICAL INFORMATION

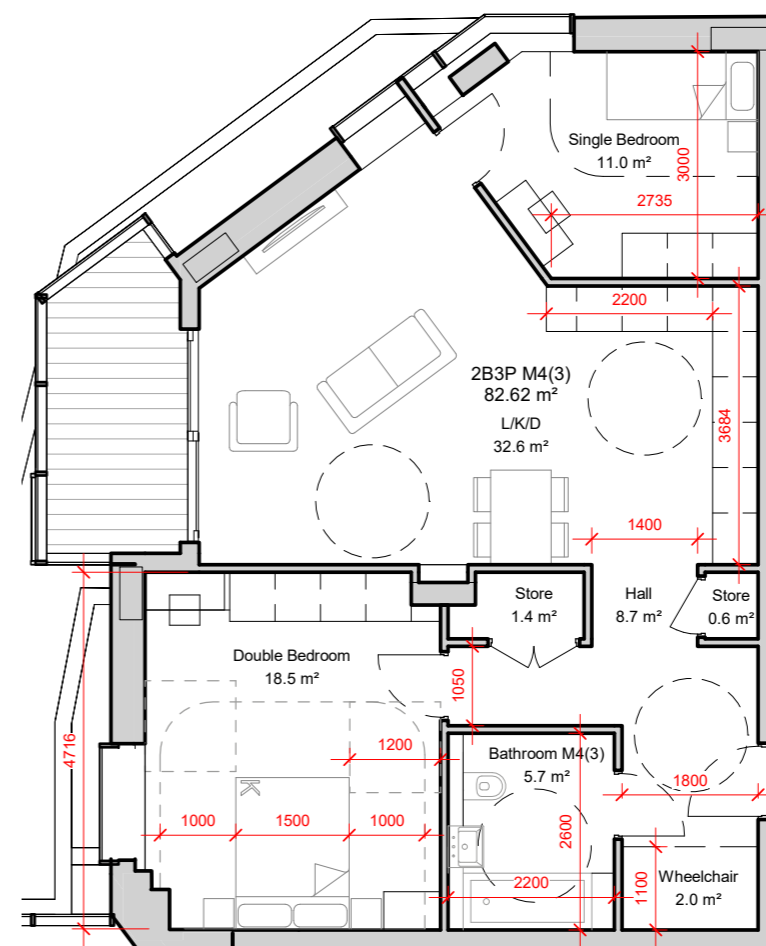
## WHEELCHAIR HOUSING STATEMENT

### M4(3) Wheelchair Units

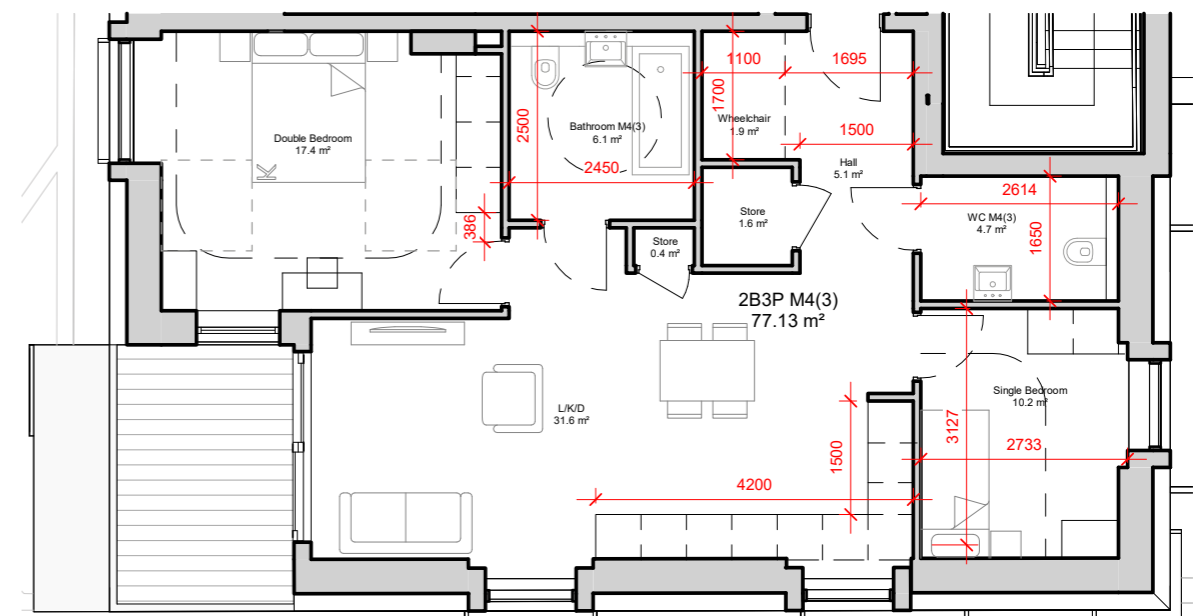
Two wheelchair adaptable units are provided with layouts complying with the requirements of Approved Document Part M4(3) of the Building Regulations.

The layout of the units illustrated adhere to the following key principles.

- Level access to the apartment.
- Every door, including the principal entrance to each home, has a minimum clear opening width of 850mm.
- The entrance area within each home has a minimum width and depth of 1200mm.
- Minimum 1500mm clear turning circle inside the entrance area, in front of the entrance door when closed.
- 300mm nib to the leading edge of all internal doors and with a 200mm nib from hinge edge.
- The minimum clear width of every hallway is 1200mm, with other considerations of diagrams 3.4 & 3.5 within Approved Document Part M4(3) taken into account.
- Adequate length of kitchen worktop.
- Clear 750mm circulation zones to external spaces.
- Wheelchair storage and transfer space (1700mm x 1100mm)



2B3P M4(3) Type 1 - Level G



2B3P M4(3) Type 2 - Level 3