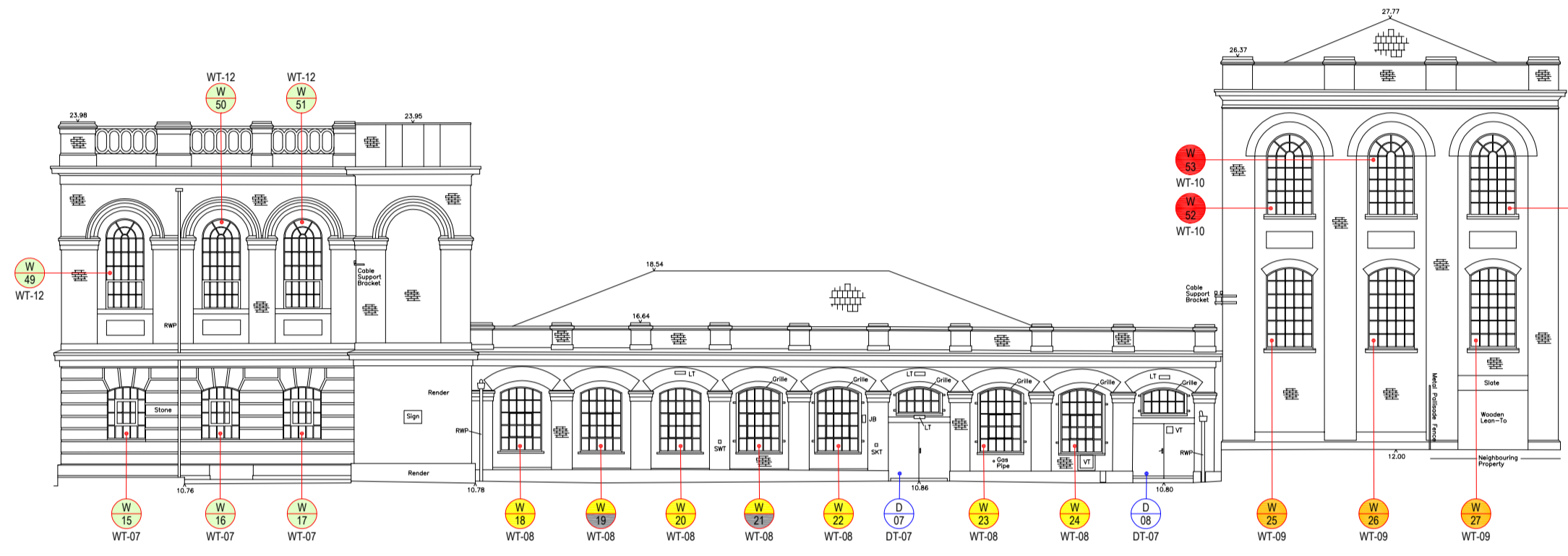
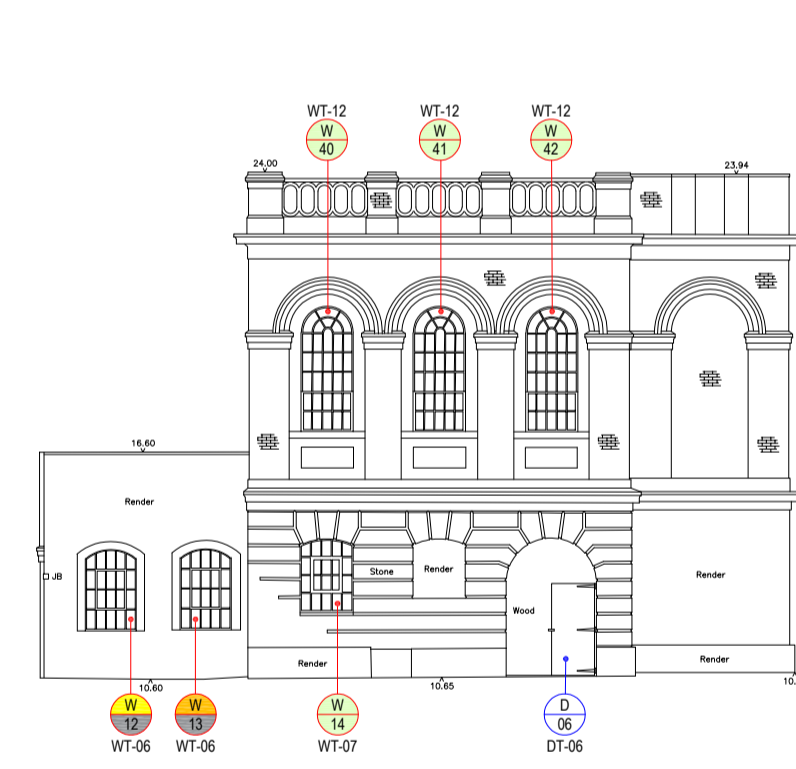


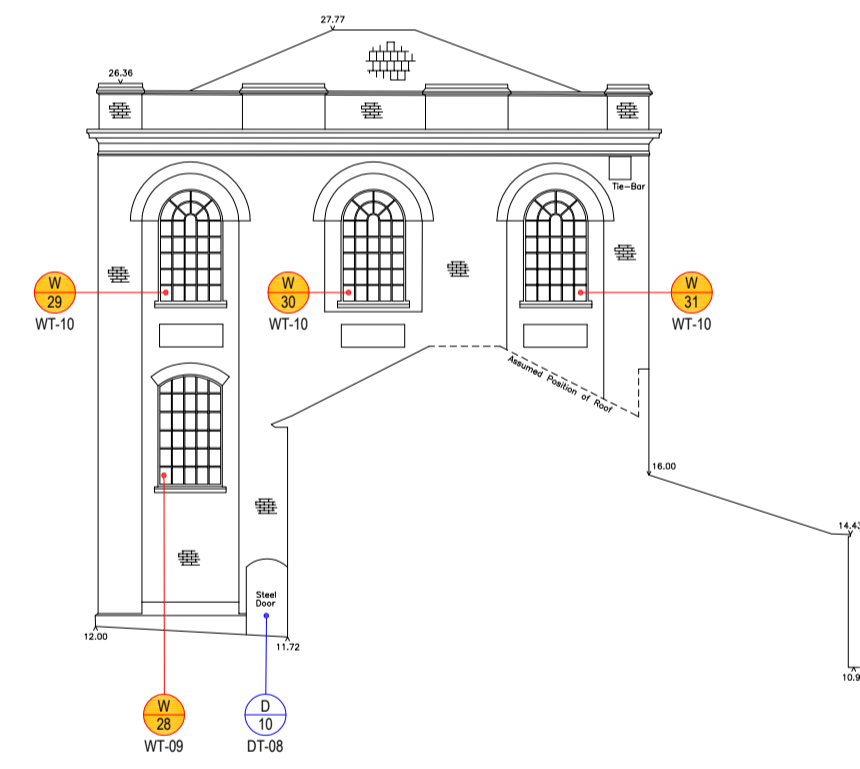
SCALE 1:200  
KARSLAKE  
ELEVATION 1 - EXISTING



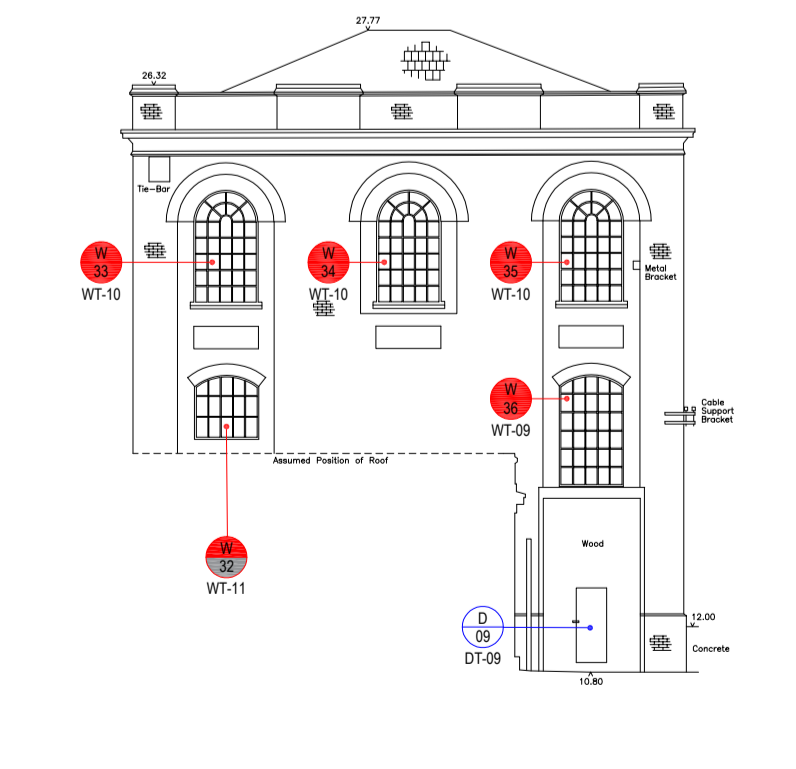
SCALE 1:200  
KARSLAKE  
ELEVATION 3 - EXISTING



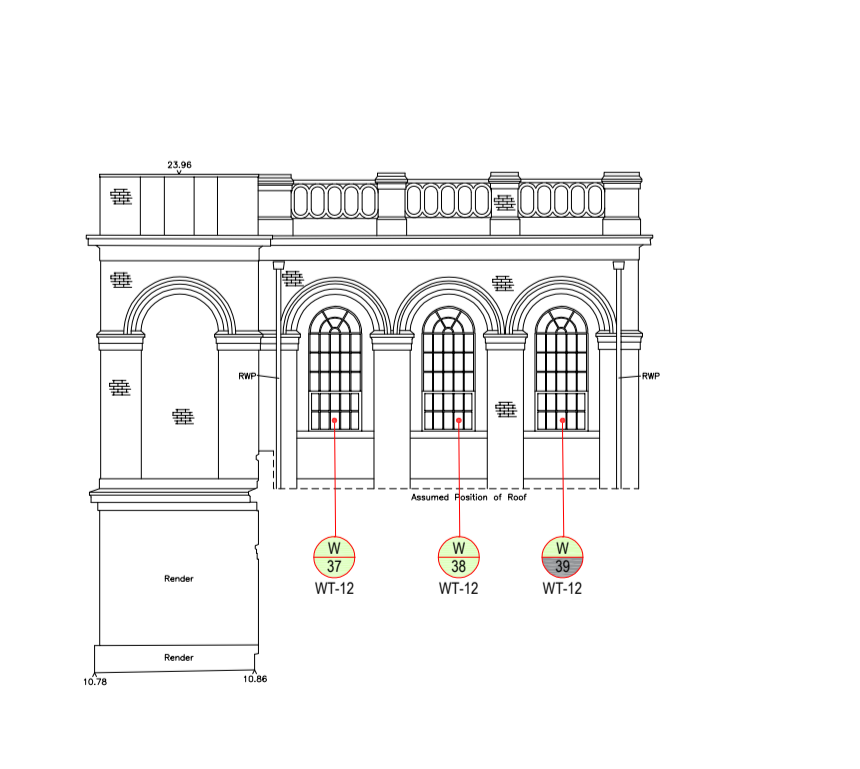
SCALE 1:200  
KARSLAKE  
ELEVATION 2 - EXISTING



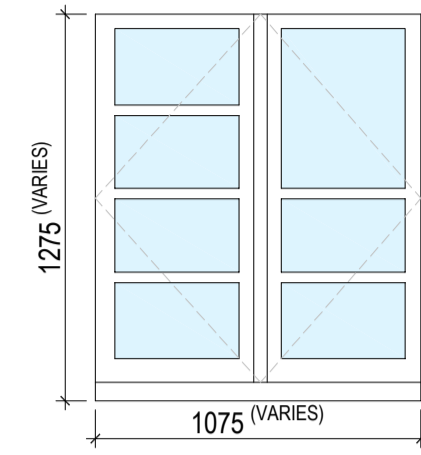
SCALE 1:200  
KARSLAKE  
ELEVATION 4 - EXISTING



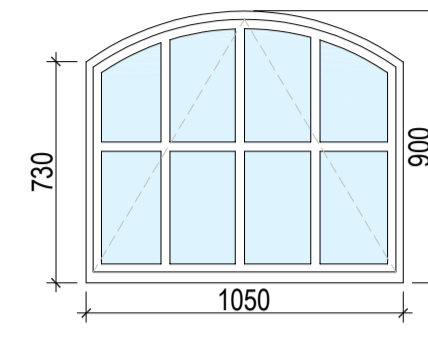
SCALE 1:200  
KARSLAKE  
ELEVATION 5 - EXISTING



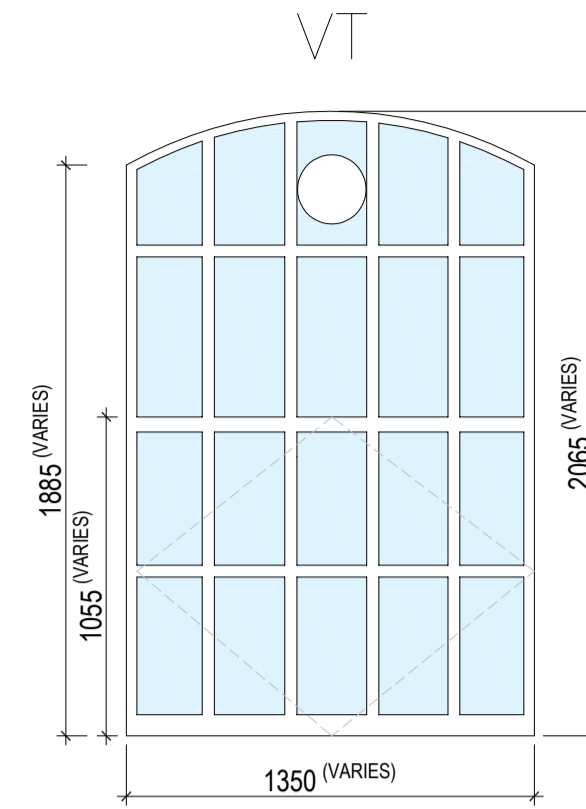
SCALE 1:200  
KARSLAKE  
ELEVATION 6 - EXISTING



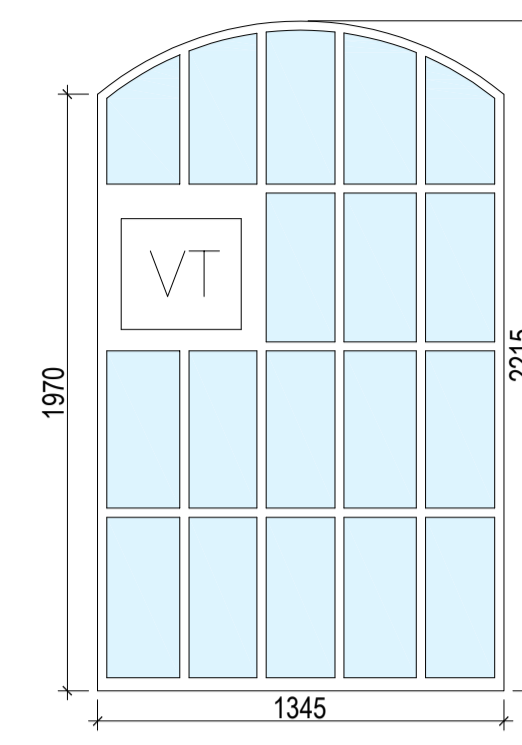
SCALE 1:25  
TYPE 01 (WT-01)



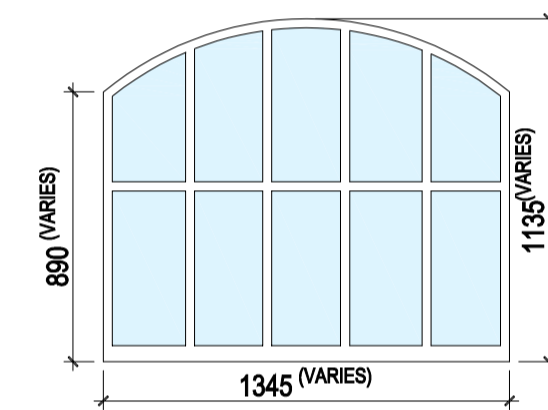
SCALE 1:25  
TYPE 02 (WT-02)



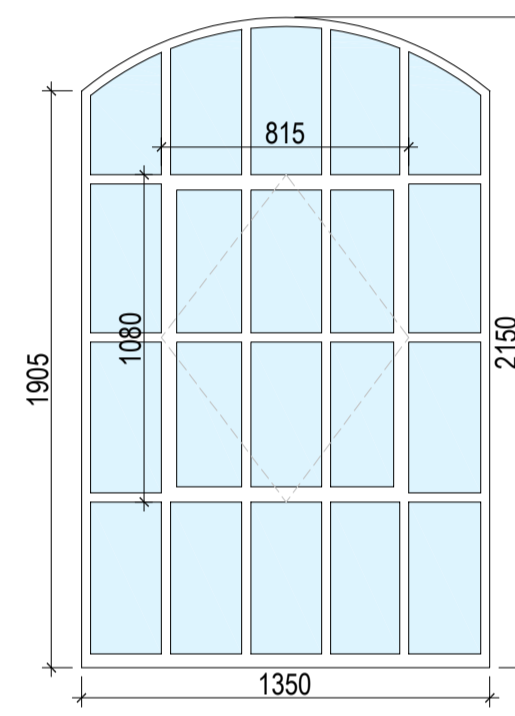
SCALE 1:25  
TYPE 03 (WT-03)



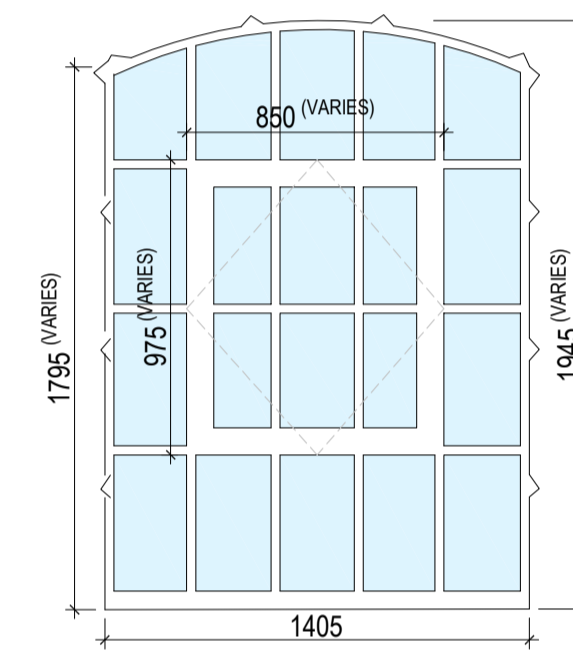
SCALE 1:25  
TYPE 04 (WT-04)



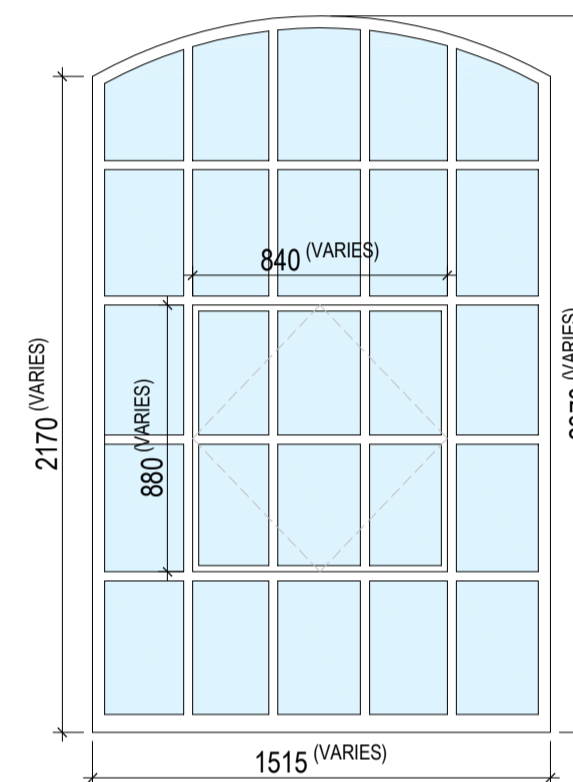
SCALE 1:25  
TYPE 05 (WT-05)



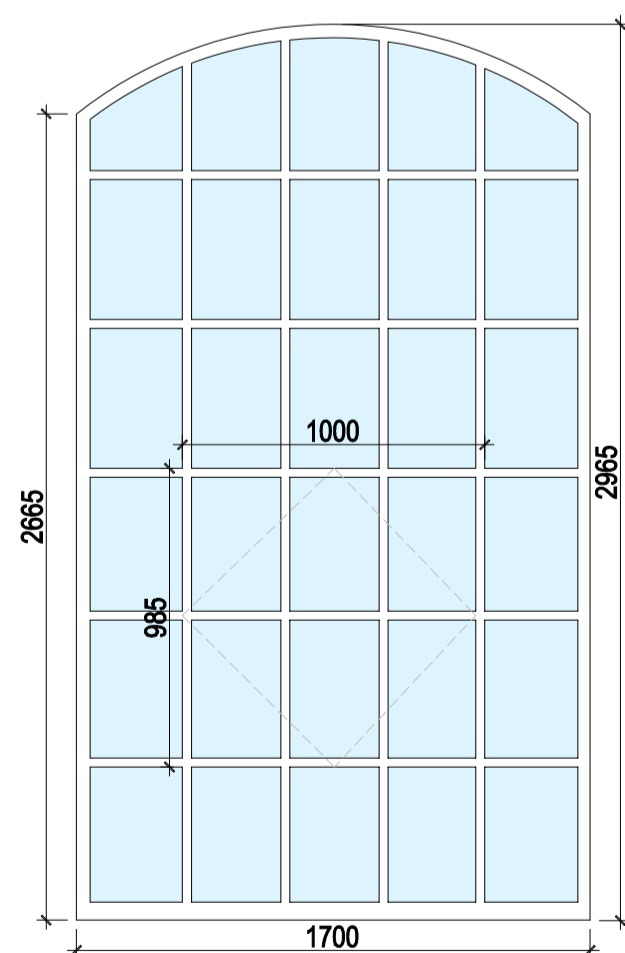
SCALE 1:25  
TYPE 06 (WT-06)



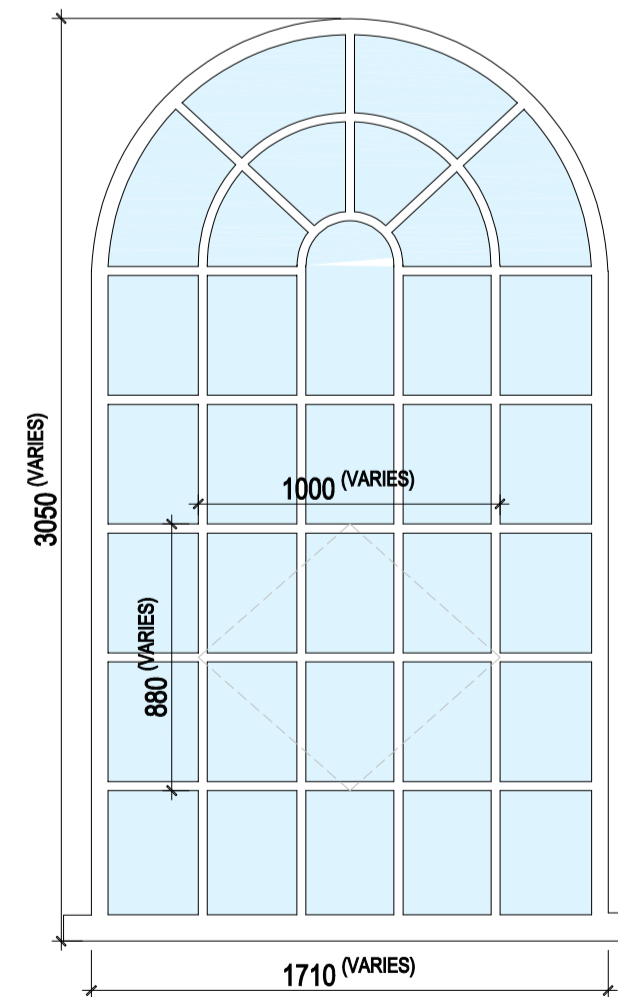
SCALE 1:25  
TYPE 07 (WT-07)



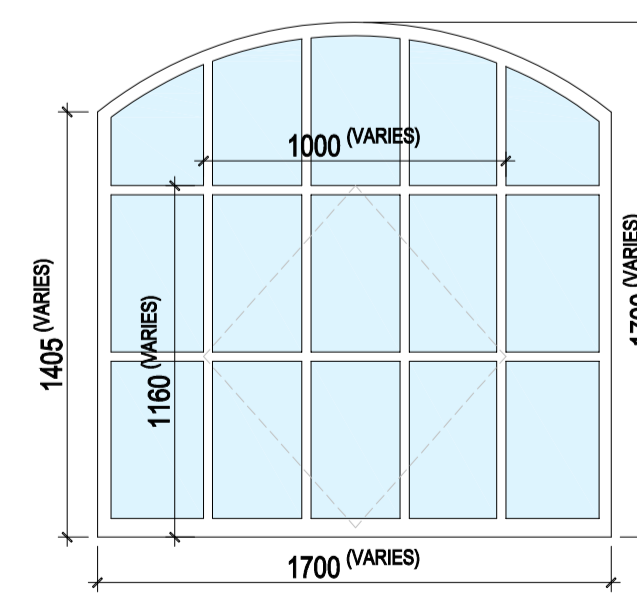
SCALE 1:25  
TYPE 08 (WT-08)



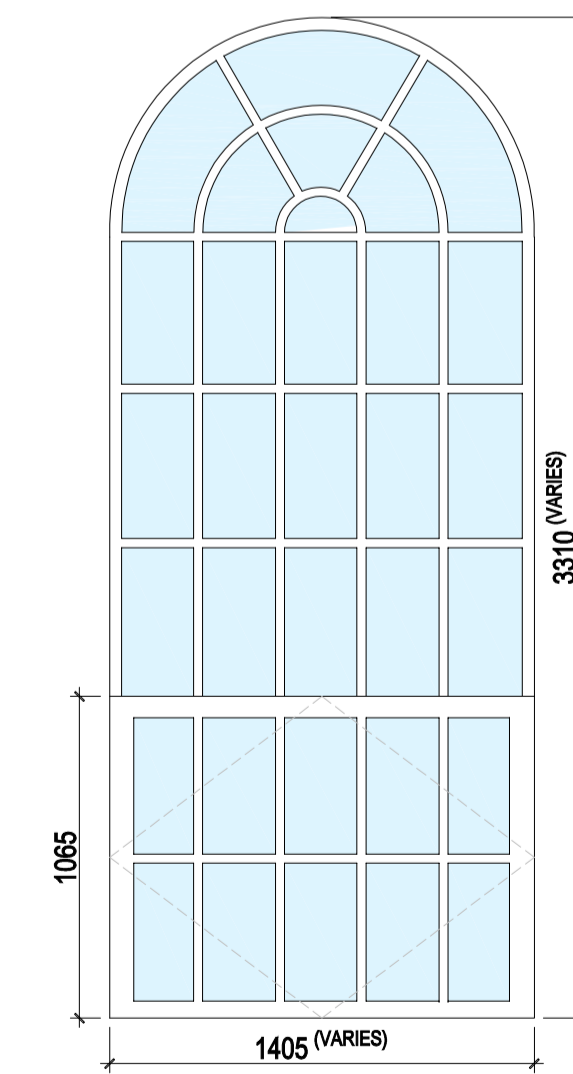
SCALE 1:25  
TYPE 09 (WT-09)



SCALE 1:25  
TYPE 10 (WT-10)



SCALE 1:25  
TYPE 11 (WT-11)



SCALE 1:25  
TYPE 12 (WT-12)

USE OF DRAWINGS

DO NOT SCALE FROM THIS DRAWING. USE WRITTEN DIMENSIONS AND CHECK ON SITE. THIS DRAWING IS BASED ON SITE INFORMATION SUPPLIED BY THIRD PARTIES AND ACCURACY OF EXISTING FEATURES IS NOT GUARANTEED. ANY ERROR, OMISSION OR DISCREPANCY NOTED ON OR BETWEEN DRAWINGS AND OTHER DOCUMENTS MUST BE REPORTED IN WRITING IMMEDIATELY. ALL MECHANICAL, ELECTRICAL AND STRUCTURAL LAYOUTS / COMPONENTS ARE INDICATIVE AND MUST BE DESIGNED AND CHECKED BY SPECIALISTS. DO NOT START WORK ON SITE BEFORE CONFIRMING THAT ALL NECESSARY STATUTORY AND OTHER CONSENTS HAVE BEEN OBTAINED. THIS DRAWING IS COPYRIGHT AND MUST NOT BE DISTRIBUTED WITHOUT PERMISSION. ELECTRONIC CAD FILES MUST NOT BE ALTERED OR COPIED.

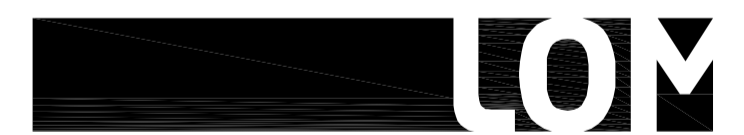
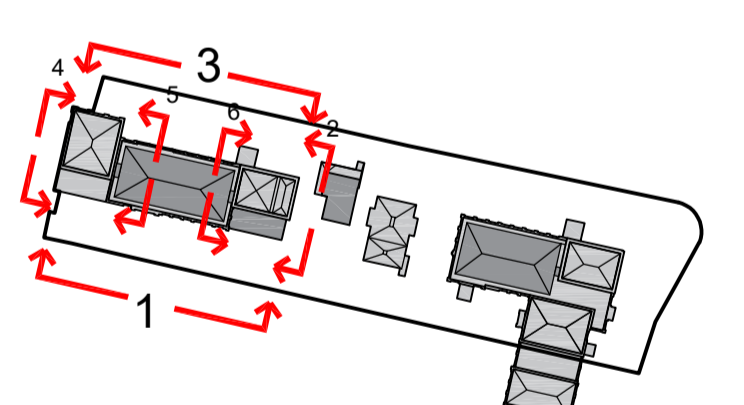
REVISIONS

REV	DATE	DESCRIPTION	INITIALS	CHECKED	DRAWN
-	02.09.2022	INITIAL ISSUE		OC	JF
A	26.05.2023	HISTORIC ENGLAND FOR COMMENT		JF	JF

NOTE:  
SURVEY INFORMATION BY M.J. REES AND COMPANY LTD, CHARTERED LAND SURVEYORS

CODE REF.	CONDITION	REQUIRED ACTION
1	VERY GOOD	Minimal defects, preventative maintenance, little/no work required
2	GOOD	Minor deterioration, condition based maintenance and repair in-situ possible.
3	FAIR	Fair deterioration, material function impaired, repair in-situ possible or offsite unit repairs
4	POOR	Critical deterioration over a large portion of components, part replacement required
5	URGENT	Extreme failure has occurred throughout, replacement replicated to match.
6	N/A	No restoration works required as new intervention proposed

IN PROGRESS



client  
WATERFALL  
PLANNING LTD

project  
HAMPTON WATERWORKS

drawing title  
EXISTING WINDOW TYPES  
KARSLAKE

sheet size scale  
A1 1:200 & 1:25 @ A1

status  
PRELIMINARY

drawing no. revision  
1685-A-P042 A

LOM architecture and design  
The Glass House 5 Sclater Street London E1 6JY UK  
Phone +44(0)20 8444 2999 Email mail@lom-fdp.com  
Web www.lom-architecture.com

