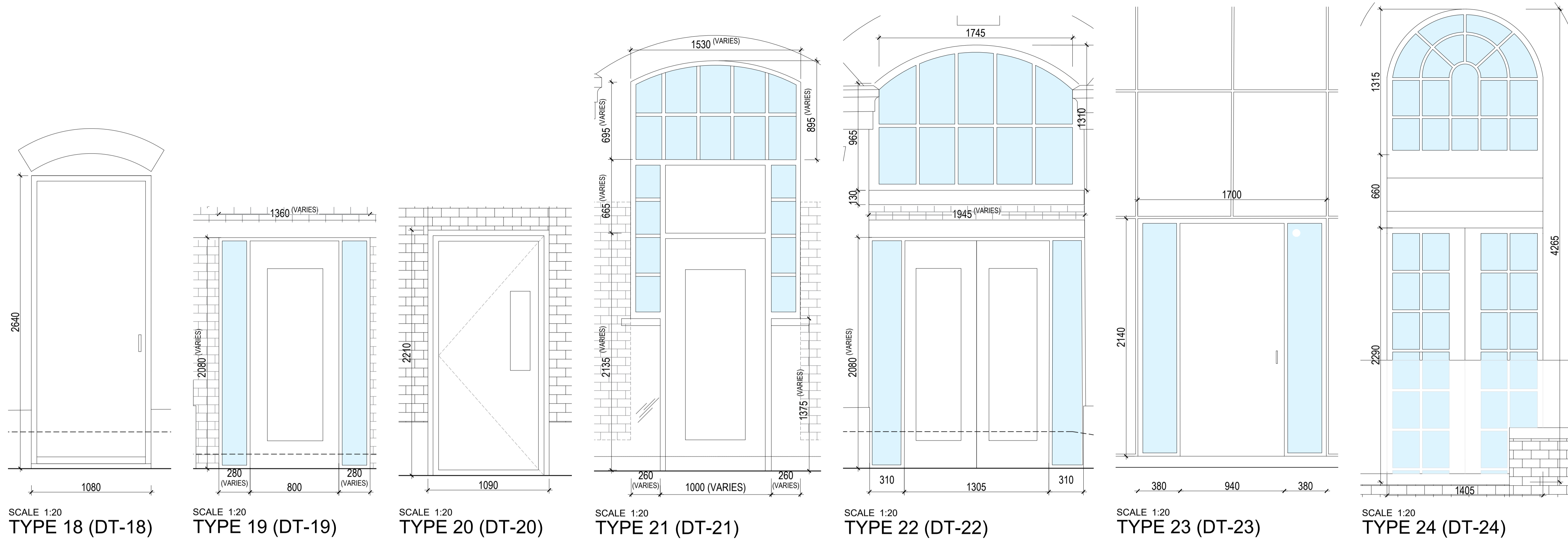


PROPOSED DOOR TYPES



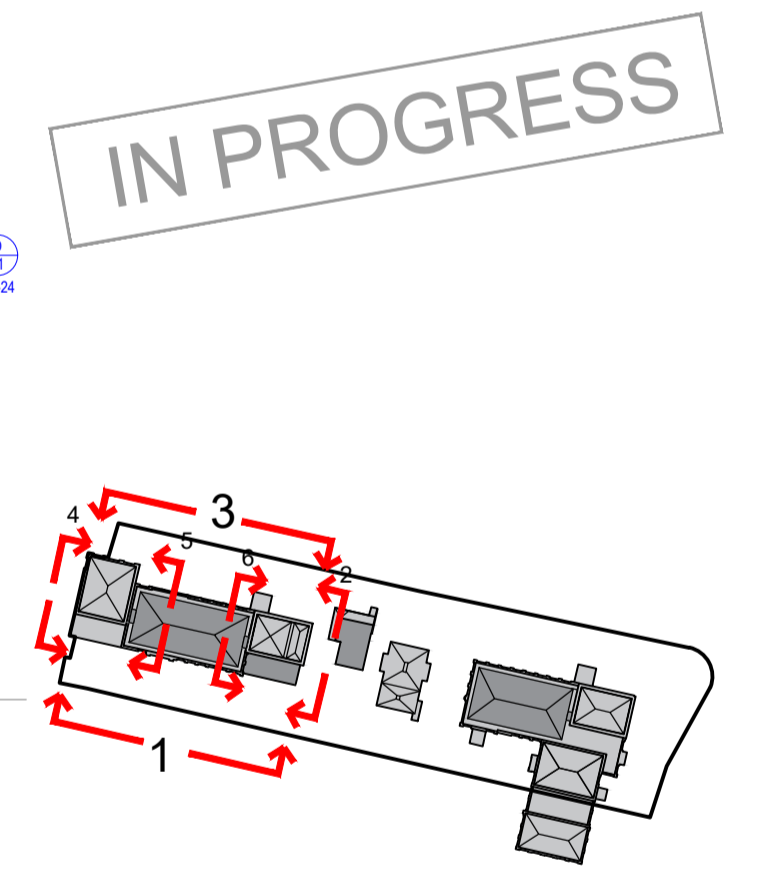
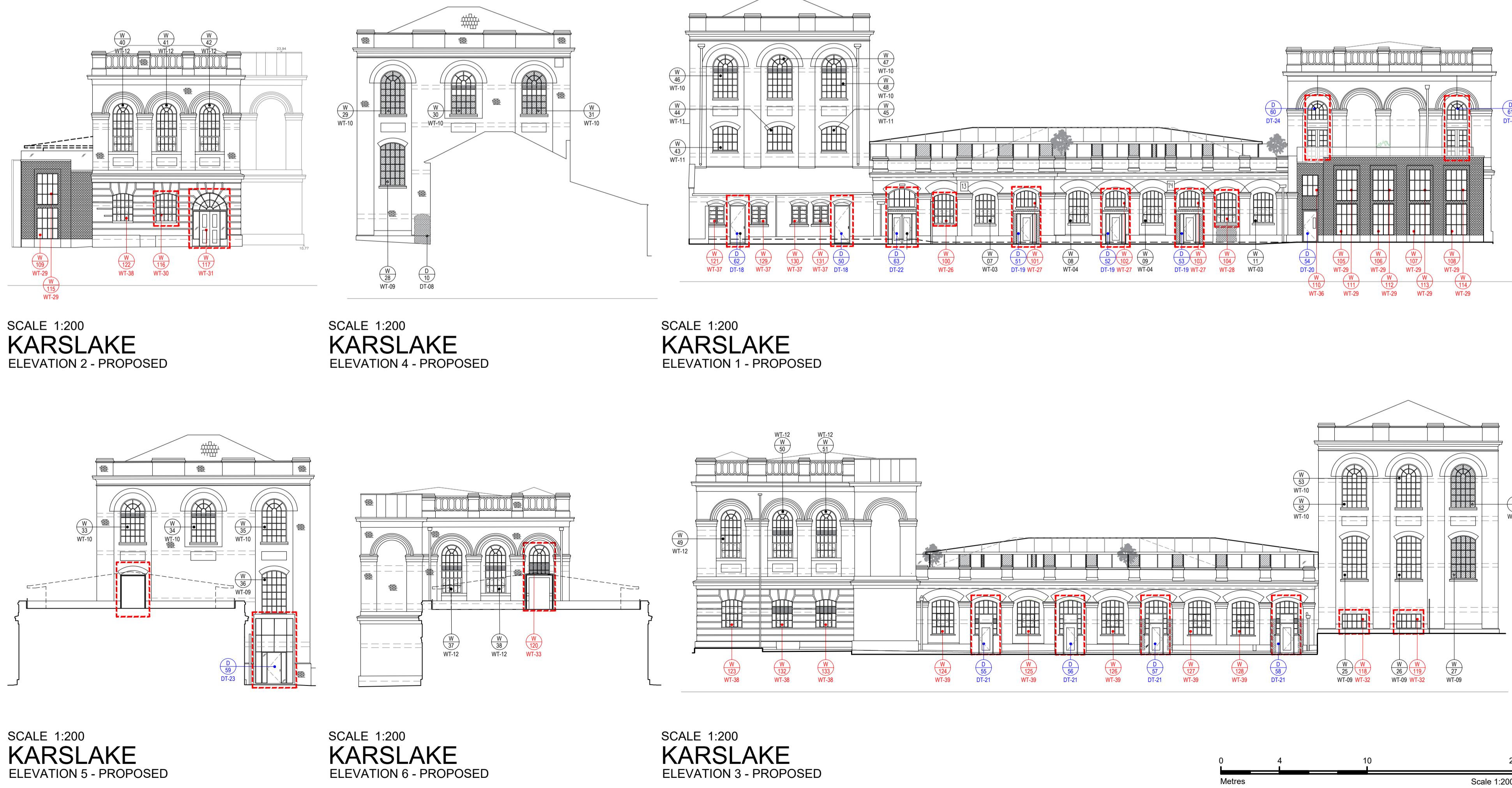
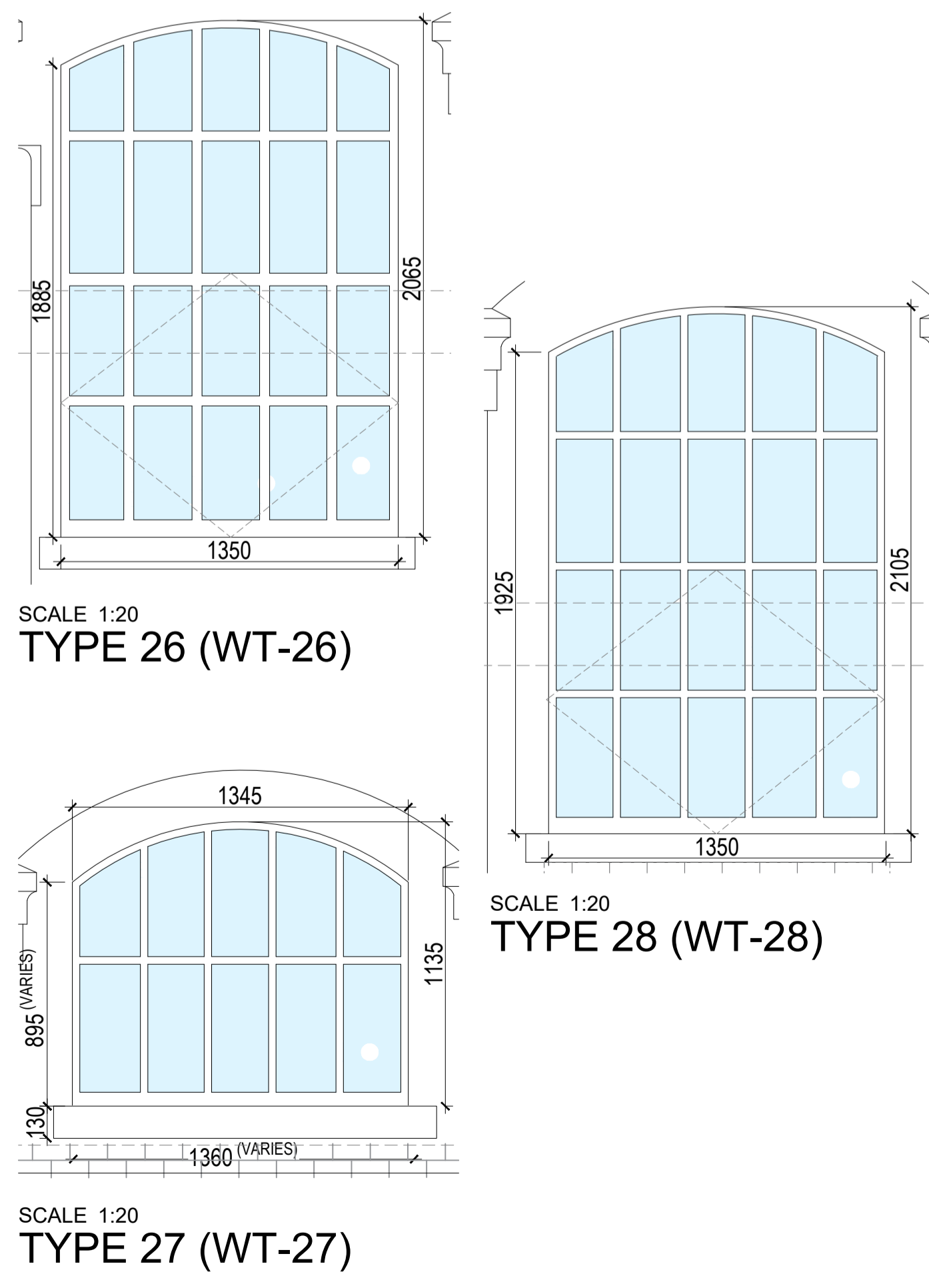
USE OF DRAWINGS
 DO NOT SCALE FROM THIS DRAWING. USE WRITTEN DIMENSIONS AND CHECK ON SITE. THIS DRAWING IS BASED ON SITE INFORMATION SUPPLIED BY THIRD PARTIES AND ACCURACY OF EXISTING FEATURES IS NOT GUARANTEED. ANY ERROR, OMISSION OR DISCREPANCY NOTED ON OR BETWEEN DRAWINGS AND OTHER DOCUMENTS MUST BE REPORTED IN WRITING IMMEDIATELY. ALL MECHANICAL, ELECTRICAL AND STRUCTURAL LAYOUTS / COMPONENTS ARE INDICATIVE AND MUST BE DESIGNED AND CHECKED BY SPECIALISTS. DO NOT START WORK ON SITE BEFORE CONFIRMING THAT ALL NECESSARY STATUTORY AND OTHER CONSENTS HAVE BEEN OBTAINED. THIS DRAWING IS COPYRIGHT AND MUST NOT BE DISTRIBUTED WITHOUT PERMISSION. ELECTRONIC CAD FILES MUST NOT BE ALTERED OR COPIED.

REVISIONS

REV	DATE	DESCRIPTION	CHECKED	DRAWN
-	02.09.2022	INITIAL ISSUE	OC	JF
A	06.10.2022	GENERAL UPDATE	LW	JF
B	21.07.2023	DOOR AND WINDOW UPDATE	LW	JF

NOTE:
 SURVEY INFORMATION BY M.J. REES AND COMPANY LTD, CHARTERED LAND SURVEYORS

PROPOSED WINDOW TYPES



LOM

client
WATERFALL PLANNING LTD

project
HAMPTON WATERWORKS

drawing title
**PROPOSED DOOR&WINDOW TYPES
 KARSLAKE EXISTING FABRIC**

sheet size scale
 A1 1:200 & 1:20 @ A1

status
PRELIMINARY

drawing no. revision
1685-A-P046 B

LOM architecture and design
 The Glass House 5 Sclater Street London E1 6JY UK
 Phone +44(0)20 8444 2999 Email mail@lom-fdp.com
 Web www.lom-architecture.com

