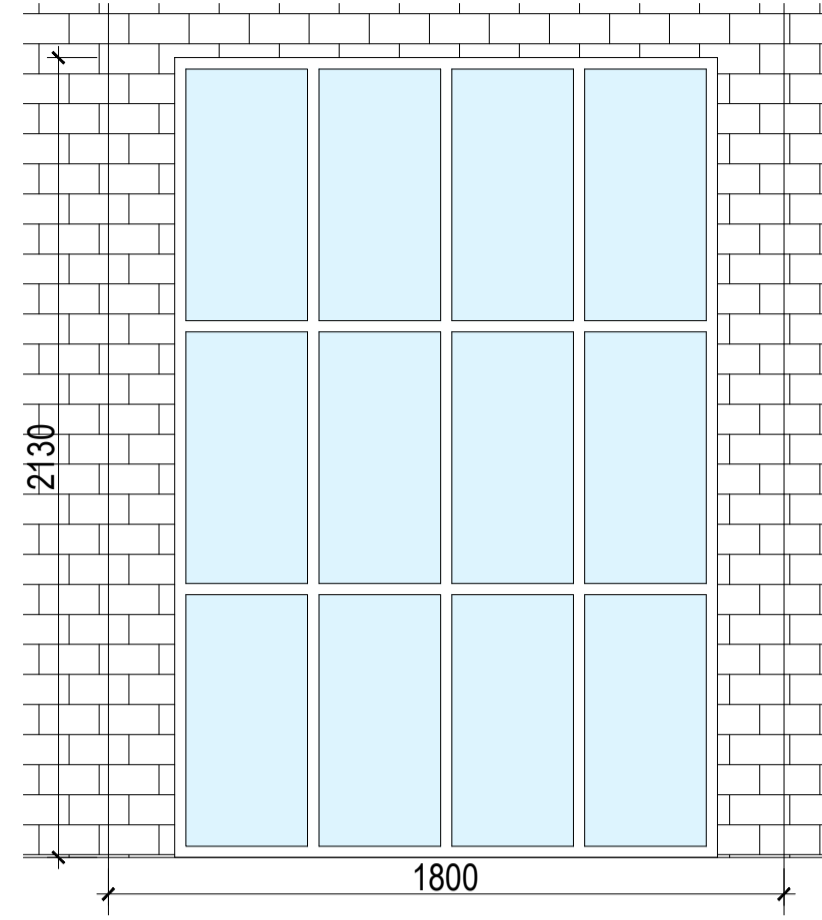
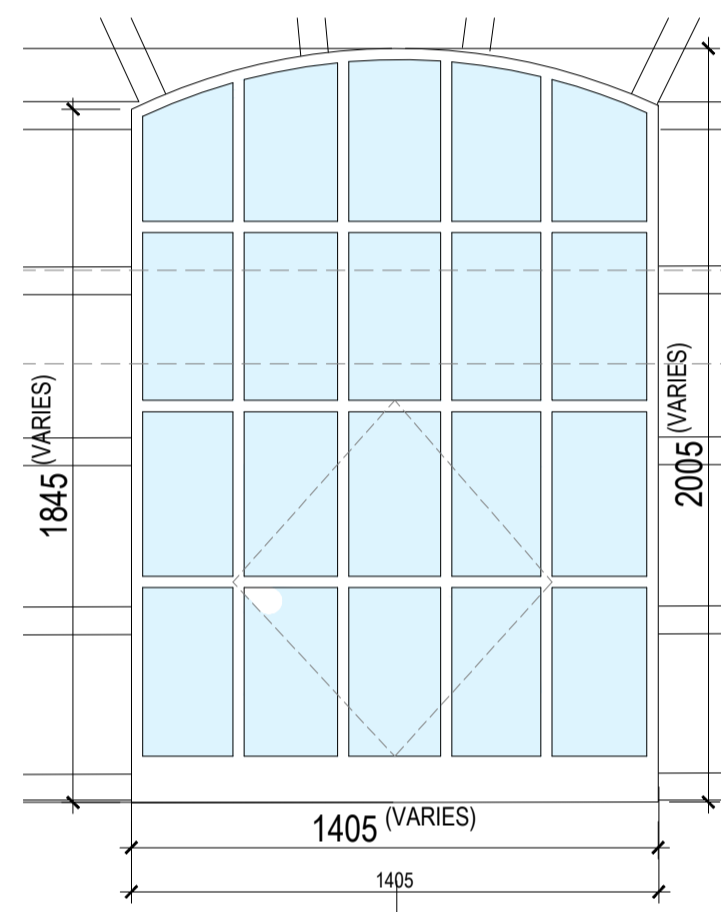


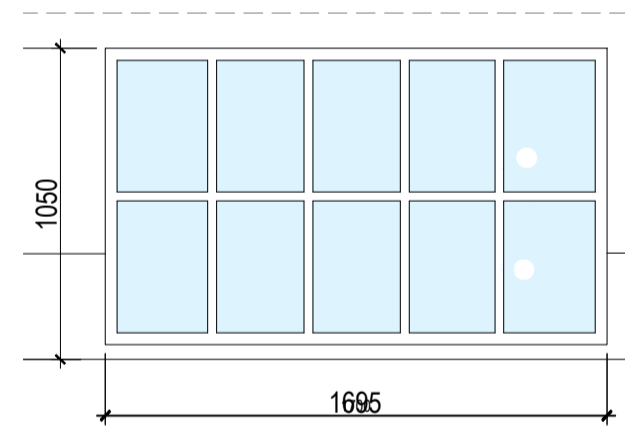
PROPOSED WINDOW TYPES



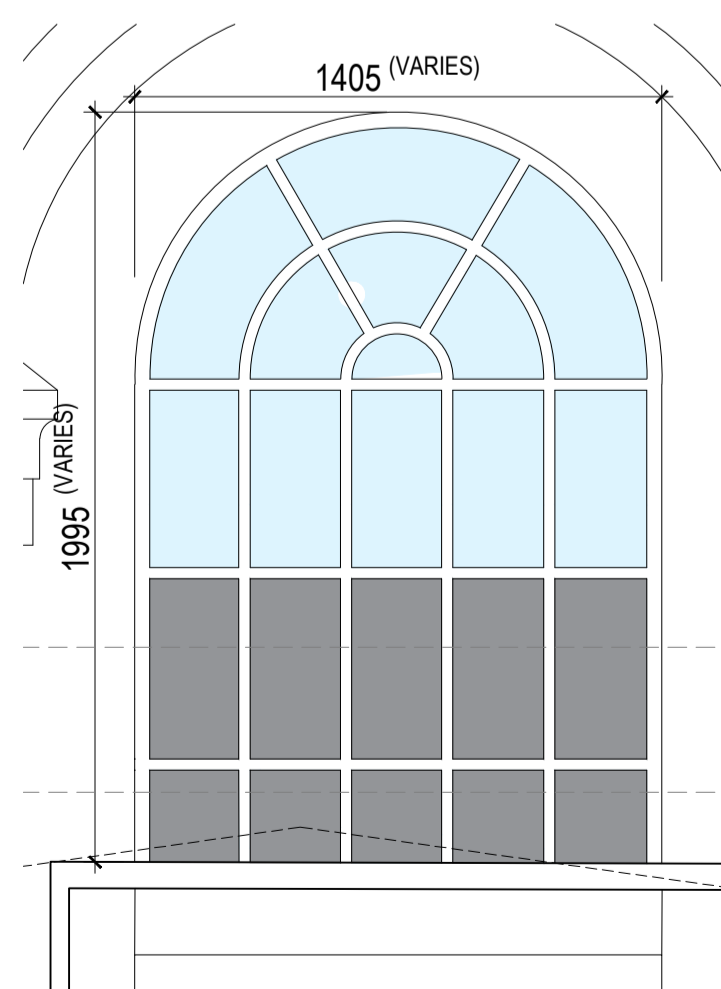
SCALE 1:20
TYPE 29 (WT-29)



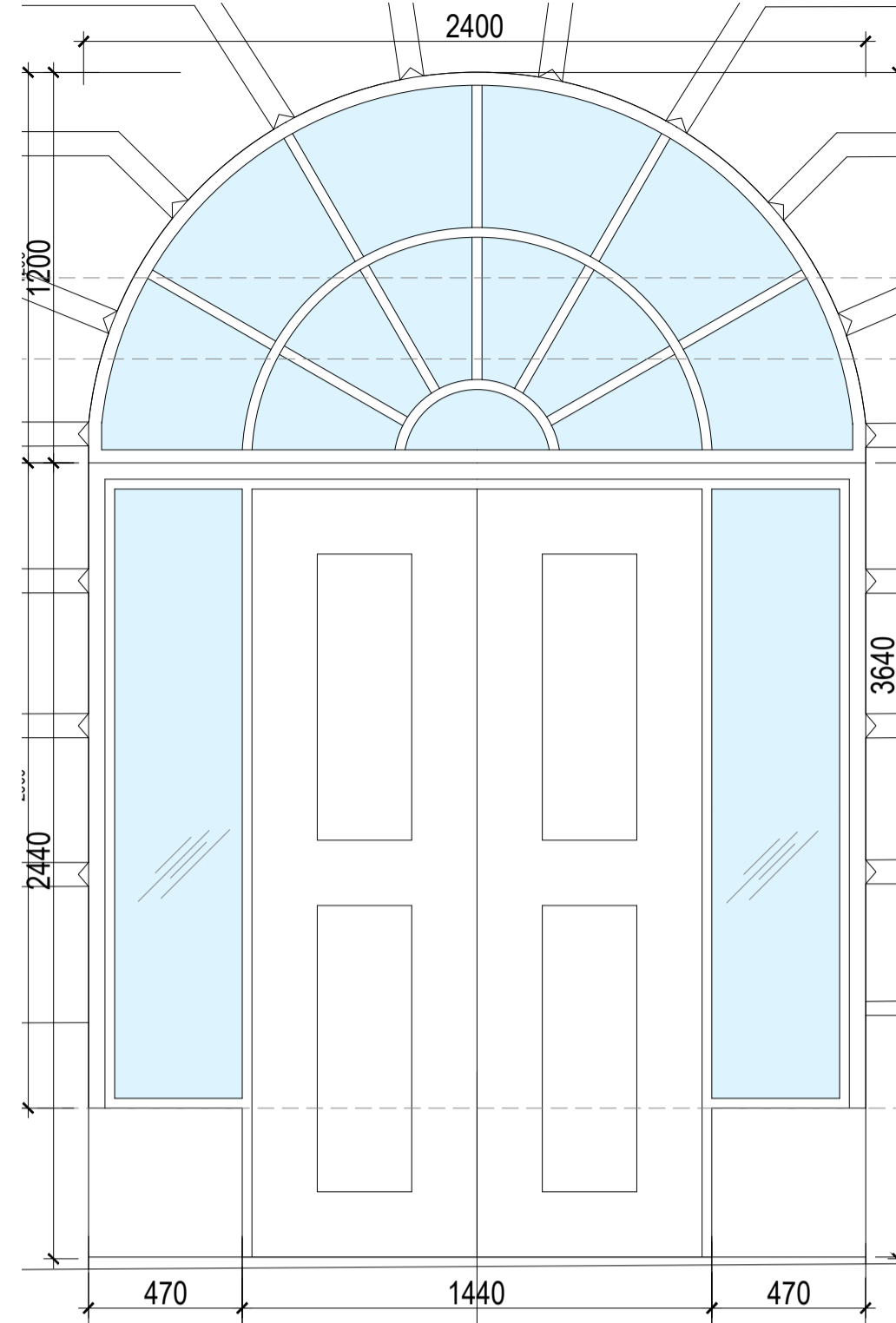
SCALE 1:20
TYPE 30 (WT-30)



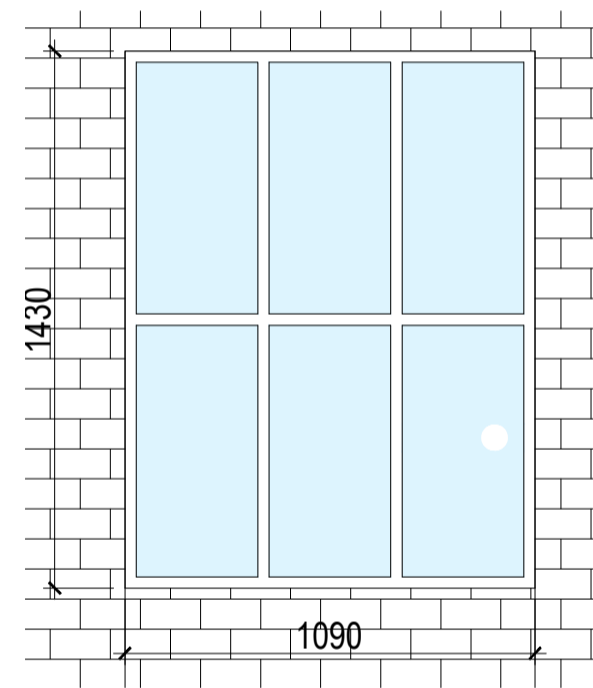
SCALE 1:20
TYPE 32 (WT-32)



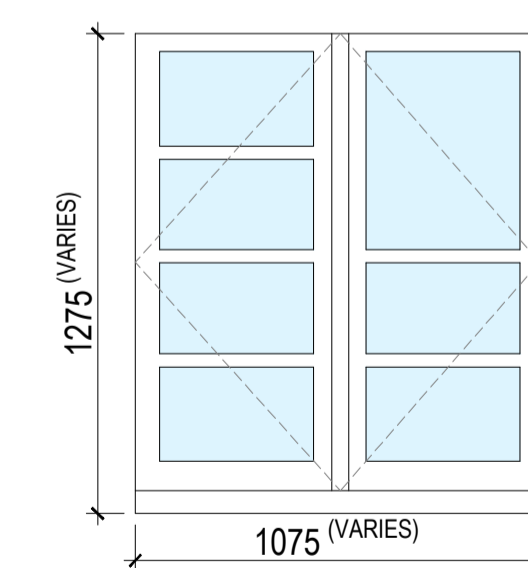
SCALE 1:20
TYPE 33 (WT-33)



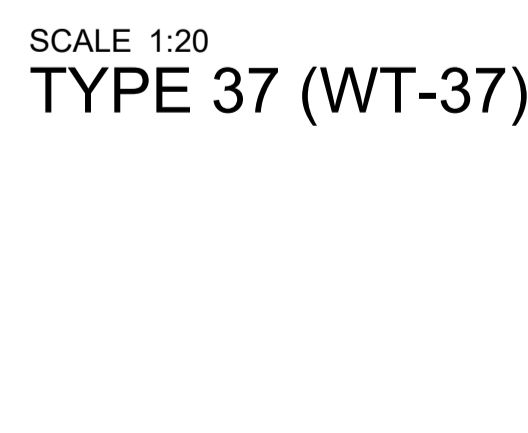
SCALE 1:20
TYPE 31 (WT-31)



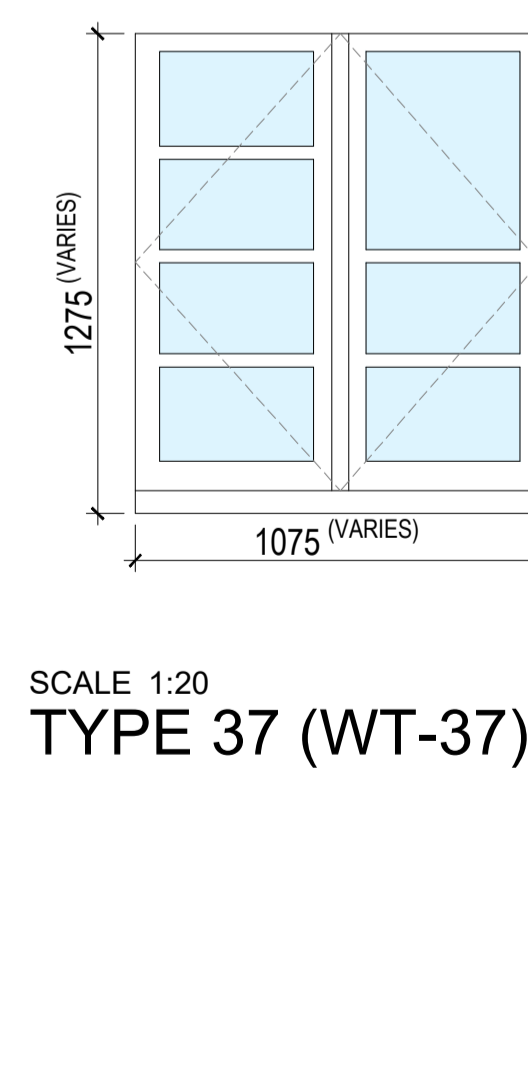
SCALE 1:20
TYPE 36 (WT-36)



SCALE 1:20
TYPE 37 (WT-37)



SCALE 1:20
TYPE 38 (WT-38)



SCALE 1:20
TYPE 39 (WT-39)

KARSLAKE - PROPOSED DOOR SCHEDULE												
REF.	DOOR TYPE	LOCATION	DOOR WIDTH	DOOR HEIGHT	STRUCTURAL OPENING Wmm x Hmm	DOOR LEAF TYPE	ADDITIONAL FEATURES	DESCRIPTION (WOOD, ALUMINIUM, IRON, UPVC)	GLAZING TYPE	PROPOSAL	SECONDARY GLAZING	OTHER COMMENTS
D-50	TYPE 18/ DT-18	KARSLAKE ELEVATION 1	1080	2640	1080 x 2640	SINGLE	N/A	TBC	N/A	REPLACING EXISTING WINDOW, REF. W-10 (KARSLAKE)	N/A	-
D-51	TYPE 19/ DT-19	KARSLAKE ELEVATION 1	1050	2075	1360 X 3340 INCL. 310MM SIDELIGHT & 1135MM WINDOW OVER (1345MM WIDE)	SINGLE	FULL HEIGHT SIDELIGHT	TBC	DOUBLE	REPLACING EXISTING DOOR, REF. D-05 (KARSLAKE)	N/A	-
D-52	TYPE 19/ DT-19	KARSLAKE ELEVATION 1	1050	2105	1360 X 3365 INCL. 310MM SIDELIGHT & 1135MM WINDOW OVER (1345MM WIDE)	SINGLE	FULL HEIGHT SIDELIGHT	TBC	DOUBLE	REPLACING EXISTING DOOR, REF. D-04 (KARSLAKE)	N/A	-
D-53	TYPE 19/ DT-19	KARSLAKE ELEVATION 1	1050	2100	1350 X 3360 INCL. 300MM SIDELIGHT & 1135MM WINDOW OVER (1345MM WIDE)	SINGLE	FULL HEIGHT SIDELIGHT	TBC	DOUBLE	REPLACING EXISTING WINDOW/DOOR, REF. W-10 (KARSLAKE)	N/A	-
D-54	TYPE 20/ DT-20	KARSLAKE ELEVATION 1	1090	2210	1090 X 2210	SINGLE	N/A	TBC	DOUBLE	GROUND FLOOR OF PROPOSED TWO STOREY EXTENSION	N/A	-
D-55	TYPE 21/ DT-21	KARSLAKE ELEVATION 3	1000	2450	1525 X 3425 INCL. 2 X 260MM EQUAL SIDELIGHTS & 920MM ARCHED WINDOW OVER	SINGLE	SIDELIGHTS 1065 ABOVE FFL	TBC	DOUBLE	REPLACING EXISTING WINDOW, REF. W-10 (KARSLAKE)	N/A	-
D-56	TYPE 21/ DT-21	KARSLAKE ELEVATION 3	1000	2500	1525 X 3425 INCL. 2 X 260MM EQUAL SIDELIGHTS & 920MM ARCHED WINDOW OVER	SINGLE	SIDELIGHTS 1065 ABOVE FFL	TBC	DOUBLE	REPLACING EXISTING WINDOW, REF. W-21 (KARSLAKE)	N/A	-
D-57	TYPE 21/ DT-21	KARSLAKE ELEVATION 3	1000	2525	1530 X 3415 INCL. 2 X 260MM EQUAL SIDELIGHTS & 890MM HIGH ARCHED TRANSOM WINDOW	SINGLE	SIDELIGHTS 1065 ABOVE FFL	TBC	DOUBLE	REPLACING EXISTING DOOR, REF. D-07 (KARSLAKE)	N/A	-
D-58	TYPE 21/ DT-21	KARSLAKE ELEVATION 3	1000	2500	1525 X 3425 INCL. 2 X 260MM EQUAL SIDELIGHTS & 870MM HIGH ARCHED WINDOW OVER	SINGLE	SIDELIGHTS 1065 ABOVE FFL	TBC	DOUBLE	REPLACING EXISTING DOOR, REF. D-08 (KARSLAKE)	N/A	-
D-59	TYPE 23/ DT-23	KARSLAKE ELEVATION 5	940	2140	1700 X 2140 INCL. 2 X EQUAL SIDELIGHTS OF 380MM	SINGLE	FULL HEIGHT SIDELIGHTS	CORTEN / ALUMINIUM / TIMBER	DOUBLE	PROPOSED DOOR WITHIN NEW GLAZING, REPLACING DOOR REF. D-09 (KARSLAKE)	N/A	-
D-60	TYPE 24/ DT-24	KARSLAKE ELEVATION 1	1405	2290	1485 X 4285 INCL. 150MM TRANSOM WINDOW OVER	SINGLE	TOP LIGHT	TBC	DOUBLE	NEW OPENING	N/A	-
D-61	TYPE 24/ DT-24	KARSLAKE ELEVATION 1	1050	2550	1405 X 2550 INCL. 355MM SIDELIGHT, 1715MM TRANSOM WINDOW OVER	SINGLE	FULL HEIGHT SIDELIGHTS	TBC	DOUBLE	NEW OPENING	N/A	-
D-62	TYPE 18/ DT-18	KARSLAKE ELEVATION 1	1080	2640	1080 X 2640	SINGLE	N/A	TBC	N/A	REPLACING EXISTING DOOR, REF. D-01 (KARSLAKE)	N/A	-
D-63	TYPE 22/ DT-22	KARSLAKE ELEVATION 1	1305	2080	1495 X 3815 INCL. 2 X 310MM EQUAL SIDELIGHTS & 1310MM ARCHED WINDOW OVER	DOUBLE	FULL HEIGHT SIDELIGHTS	TBC	DOUBLE	REPLACING EXISTING DOOR, REF. D-02 (KARSLAKE)	N/A	-

KARSLAKE - PROPOSED WINDOW SCHEDULE												
REF.	WINDOW TYPE	LOCATION	WINDOW WIDTH	WINDOW HEIGHT	STRUCTURAL OPENING Wmm x Hmm / Arch Height	FIXED OR OPENABLE	INWARD OR OUTWARD OPENING	DESCRIPTION (WOOD, ALUMINIUM, IRON, UPVC)	GLAZING TYPE	PROPOSAL	SECONDARY GLAZING	OTHER COMMENTS
W-100	TYPE 26/ WT-26	ELEVATION 1	1350	1885	1350 x 1885 / 2065	OPENABLE	INWARD + OUTWARD	ALUMINIUM	DOUBLE	REPLACING EXISTING WINDOW, REF. W-06	NO	-
W-101	TYPE 27/ WT-27	ELEVATION 1	1345	895	1345 x 895 / 1135	FIXED	N/A	ALUMINIUM	DOUBLE	PROPOSED WINDOW ABOVE NEW DOOR, REF. D-51	NO	-
W-102	TYPE 27/ WT-27	ELEVATION 1	1345	920	1345 x 920 / 1135	FIXED	N/A	ALUMINIUM	DOUBLE	PROPOSED WINDOW ABOVE NEW DOOR, REF. D-52	NO	-
W-103	TYPE 27/ WT-27	ELEVATION 1	1345	890	1345 x 890 / 1135	FIXED	N/A	ALUMINIUM	DOUBLE	PROPOSED WINDOW ABOVE NEW DOOR, REF. D-53	NO	-
W-104	TYPE 28/ WT-28	ELEVATION 1	1350	1925	1350 x 1925 / 2105	OPENABLE	INWARD + OUTWARD	ALUMINIUM	DOUBLE	REPLACING EXISTING DOOR, REF. D-05	NO	-
W-105	TYPE 29/ WT-29	ELEVATION 1	1800	2130	1800 x 2130	OPENABLE	OUTWARD	ALUMINIUM	DOUBLE	GROUND FLOOR OF PROPOSED TWO STOREY EXTENSION	NO	-
W-106	TYPE 29/ WT-29	ELEVATION 1	1800	2130	1800 x 2130	OPENABLE	OUTWARD	ALUMINIUM	DOUBLE	GROUND FLOOR OF PROPOSED TWO STOREY EXTENSION	NO	-
W-107	TYPE 29/ WT-29	ELEVATION 1	1800	2130	1800 x 2130	OPENABLE	OUTWARD	ALUMINIUM	DOUBLE	GROUND FLOOR OF PROPOSED TWO STOREY EXTENSION	NO	-
W-108	TYPE 29/ WT-29	ELEVATION 1	1800	2130	1800 x 2130	OPENABLE	OUTWARD	ALUMINIUM	DOUBLE	GROUND FLOOR OF PROPOSED TWO STOREY EXTENSION	NO	-
W-109	TYPE 29/ WT-29	ELEVATION 1	1800	2130	1800 x 2130	OPENABLE	OUTWARD	ALUMINIUM	DOUBLE	GROUND FLOOR OF PROPOSED TWO STOREY EXTENSION	NO	-
W-110	TYPE 36 WT-36	ELEVATION 1	1090	1430	1090 x 1430	OPENABLE	OUTWARD	ALUMINIUM	DOUBLE	FIRST FLOOR OF PROPOSED TWO STOREY EXTENSION	NO	-
W-111	TYPE 29/ WT-29	ELEVATION 1	1800	2130	1800 x 2130	OPENABLE	OUTWARD	ALUMINIUM	DOUBLE	FIRST FLOOR OF PROPOSED TWO STOREY EXTENSION	NO	-
W-112	TYPE 29/ WT-29	ELEVATION 1	1800	2130	1800 x 2130	OPENABLE	OUTWARD	ALUMINIUM	DOUBLE	FIRST FLOOR OF PROPOSED TWO STOREY EXTENSION	NO	-
W-113	TYPE 29/ WT-29	ELEVATION 1	1800	2130	1800 x 2130	OPENABLE	OUTWARD	ALUMINIUM	DOUBLE	FIRST FLOOR OF PROPOSED TWO STOREY EXTENSION	NO	-
W-114	TYPE 29/ WT-29	ELEVATION 1	1800	2130	1800 x 2130	OPENABLE	OUTWARD	ALUMINIUM	DOUBLE	FIRST FLOOR OF PROPOSED TWO STOREY EXTENSION	NO	-
W-115	TYPE 29/ WT-29	ELEVATION 2	1800	2130	1800 x 2130	OPENABLE	OUTWARD	ALUMINIUM	DOUBLE	FIRST FLOOR OF PROPOSED TWO STOREY EXTENSION	NO	-
W-116	TYPE 30/ WT-30	ELEVATION 2	1405	1845 / 2005	1405 x 1845 / 2005	OPENABLE	INWARD + OUTWARD	ALUMINIUM	DOUBLE	NEW OPENING	NO	-
W-117	TYPE 31/ WT-31	ELEVATION 3	2400	3640	2400 x 3640	FIXED	N/A	ALUMINIUM	DOUBLE	REPLACING EXISTING DOOR, D-06	NO	-
W-118	TYPE 32/ WT-32	ELEVATION 3	1800	1500	1800 x 1500	FIXED	N/A	ALUMINIUM	DOUBLE	NEW OPENING	NO	-
W-119	TYPE 32/ WT-32	ELEVATION 3	1800	1500	1800 x 1500	FIXED	N/A	ALUMINIUM	DOUBLE	NEW OPENING	NO	-
W-120	TYPE 33/ WT-33	ELEVATION 6	1405	1995	1405 x 1995	FIXED	N/A	ALUMINIUM	DOUBLE	EXISTING WINDOW OPENING, REF. W-39, PROPOSED GLAZED LINK	NO	-
W-121	TYPE 37/ WT-37	ELEVATION 1	1075	1275	1075 x 1275	OPENABLE	OUTWARD	ALUMINIUM	DOUBLE	REPLACING EXISTING WINDOW, REF. W-01	NO	-
W-122	TYPE 38/ WT-38	ELEVATION 2	1405	1795	1405 x 1795	OPENABLE	INWARD + OUTWARD	ALUMINIUM	DOUBLE	REPLACING EXISTING WINDOW, REF. W-14	NO	-
W-123	TYPE 38/ WT-38	ELEVATION 3	1405	1795	1405 x 1795	OPENABLE	INWARD + OUTWARD	ALUMINIUM	DOUBLE	REPLACING EXISTING WINDOW, REF. W-15	NO	-
W-124	TYPE 39/ WT-39	ELEVATION 3	1515	2170	1515 x 2170	OPENABLE	INWARD + OUTWARD	ALUMINIUM	DOUBLE	REPLACING EXISTING WINDOW, REF. W-18	NO	-
W-125	TYPE 39/ WT-39	ELEVATION 3	1515	2170	1515 x 2170	OPENABLE	INWARD + OUTWARD	ALUMINIUM	DOUBLE	REPLACING EXISTING WINDOW, REF. W-20	NO	-
W-126	TYPE 39/ WT-39	ELEVATION 3	1515	2170	1515 x 2170	OPENABLE	INWARD + OUTWARD	ALUMINIUM	DOUBLE	REPLACING EXISTING WINDOW, REF. W-21	NO	-
W-127	TYPE 39/ WT-39	ELEVATION 3	1515	2170	1515 x 2170	OPENABLE	INWARD + OUTWARD	ALUMINIUM	DOUBLE	REPLACING EXISTING WINDOW, REF. W-23	NO	-
W-128	TYPE 39/ WT-39	ELEVATION 3	1515	2170	1515 x 2170	OPENABLE	INWARD + OUTWARD	ALUMINIUM	DOUBLE	REPLACING EXISTING WINDOW, REF. W-24	NO	-
W-129	TYPE 37/ WT-37	ELEVATION 1	1075	1275	1075 x 1275	OPENABLE	OUTWARD	ALUMINIUM	DOUBLE	REPLACING EXISTING WINDOW, REF. W-01	NO	-
W-130	TYPE 37/ WT-37	ELEVATION 1	1075	1275	1075 x 1275	OPENABLE	OUTWARD	ALUMINIUM	DOUBLE	REPLACING EXISTING WINDOW, REF. W-01	NO	-
W-131	TYPE 37/ WT-37	ELEVATION 1	1075	1275	1075 x 1275	OPENABLE	OUTWARD	ALUMINIUM	DOUBLE	REPLACING EXISTING WINDOW, REF. W-01	NO	-
W-132	TYPE 38/ WT-38	ELEVATION 3	1405	1795	1405 x 1795	OPENABLE	INWARD + OUTWARD	ALUMINIUM	DOUBLE	REPLACING EXISTING WINDOW, REF. W-15	NO	-
W-133	TYPE 38/ WT-38	ELEVATION 3	1405	1795	1405 x 1795	OPENABLE	INWARD + OUTWARD	ALUMINIUM	DOUBLE	REPLACING EXISTING WINDOW, REF. W-15	NO	-

USE OF DRAWINGS

DO NOT SCALE FROM THIS DRAWING. USE WRITTEN DIMENSIONS AND CHECK ON SITE. THIS DRAWING IS BASED ON SITE INFORMATION SUPPLIED BY THIRD PARTIES AND ACCURACY OF EXISTING FEATURES IS NOT GUARANTEED. ANY ERROR, OMISSION OR DISCREPANCY NOTED ON OR BETWEEN DRAWINGS AND OTHER DOCUMENTS MUST BE REPORTED IN WRITING IMMEDIATELY. ALL MECHANICAL, ELECTRICAL AND STRUCTURAL LAYOUTS / COMPONENTS ARE INDICATIVE AND MUST BE DESIGNED AND CHECKED BY SPECIALISTS. DO NOT START WORK ON SITE BEFORE CONFIRMING THAT ALL NECESSARY STATUTORY AND OTHER CONSENTS HAVE BEEN OBTAINED. THIS DRAWING IS COPYRIGHT AND MUST NOT BE DISTRIBUTED WITHOUT PERMISSION. ELECTRONIC CAD FILES MUST NOT BE ALTERED OR COPIED.

REVISIONS

REV	DATE	DESCRIPTION	CHECKED	DRAWN
-	02.09.2022	INITIAL ISSUE	OC	JF
A	06.10.2022	GENERAL UPDATE	LW	JF
B	21.07.2023	DOOR AND WINDOW UPDATE	LW	JF

NOTE:
SURVEY INFORMATION BY M.J. REES AND COMPANY LTD, CHARTERED LAND SURVEYORS

IN PROGRESS



client
WATERFALL
PLANNING LTD

project
HAMPTON WATERWORKS

drawing title
PROPOSED WINDOW TYPES
PROPOSED DOOR & WINDOW
SCHEDULE - KARSLAKE

sheet size scale
A1 1:20 @ A1

status
PRELIMINARY

drawing no. revision
1685-A-P047 B

LOM architecture and design
The Glass House 5 Sclater Street London E1 6JY UK
Phone +44(0)20 8444 2999 Email mail@lom-fdp.com
Web www.lom-architecture.com

