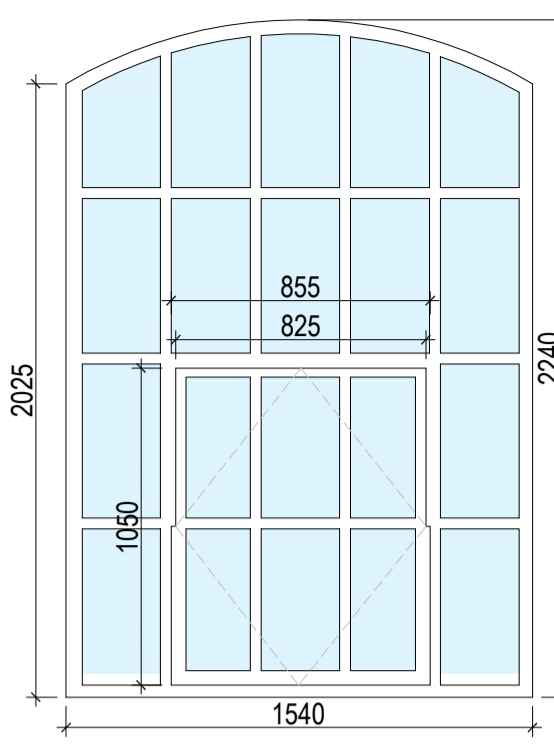
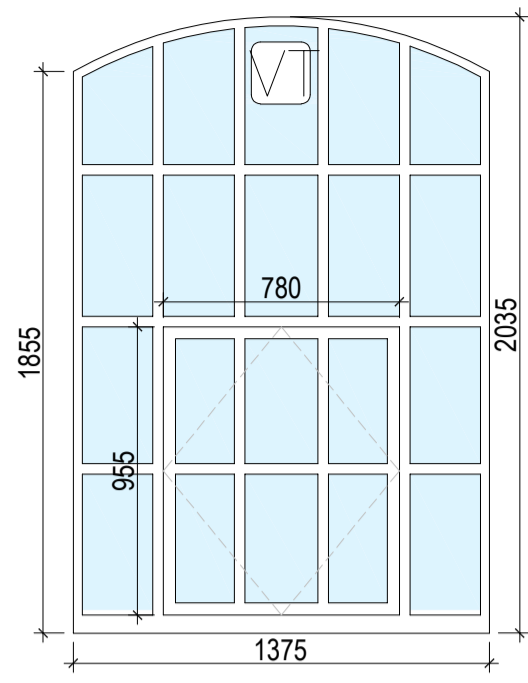


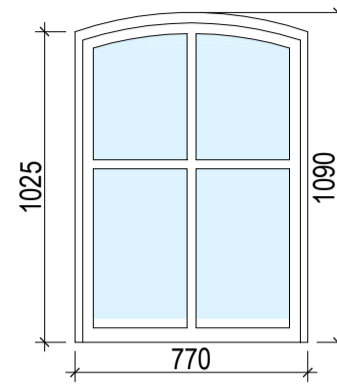
SCALE 1:25
TYPE 13 (WT-13)



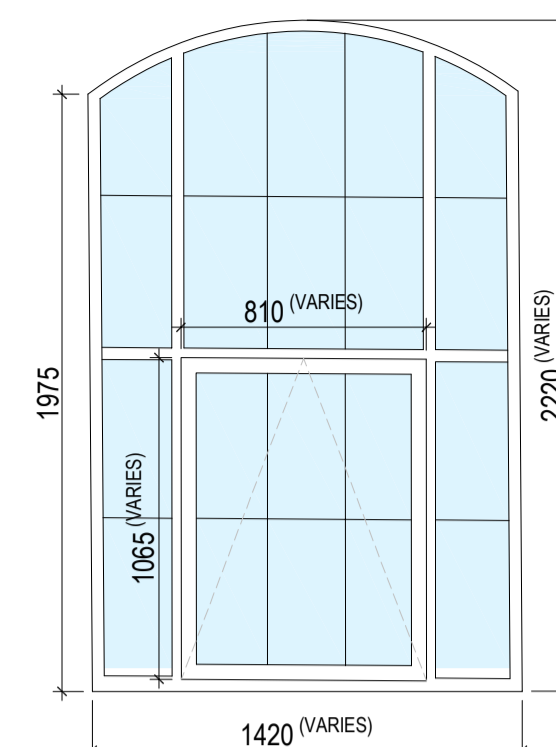
SCALE 1:25
TYPE 14 (WT-14)



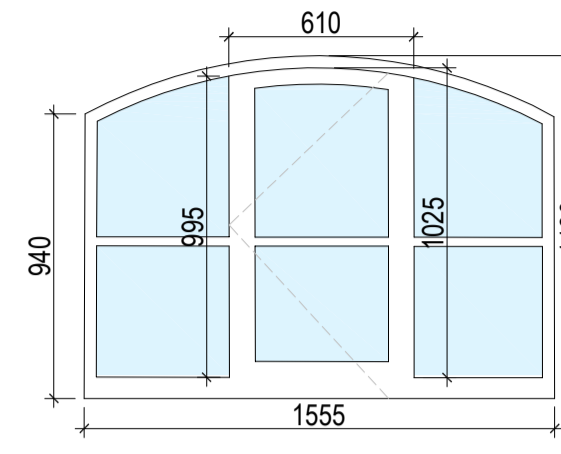
SCALE 1:25
TYPE 15 (WT-15)



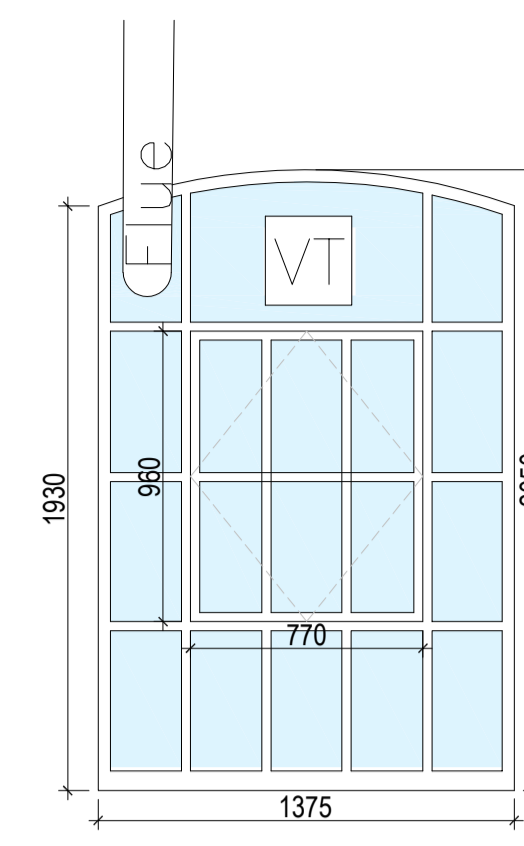
SCALE 1:25
TYPE 16 (WT-16)



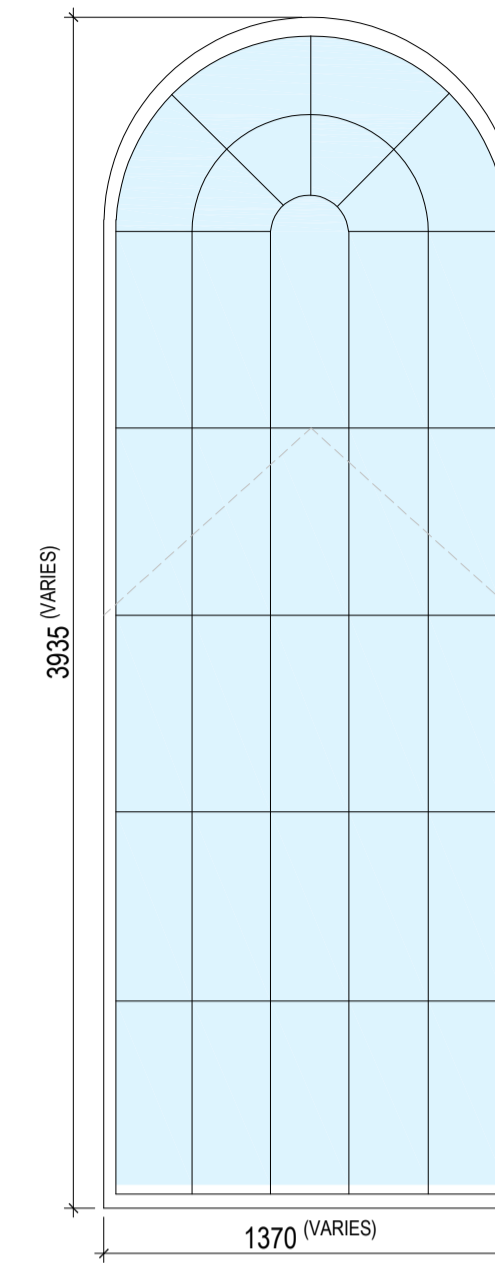
SCALE 1:25
TYPE 17 (WT-17)



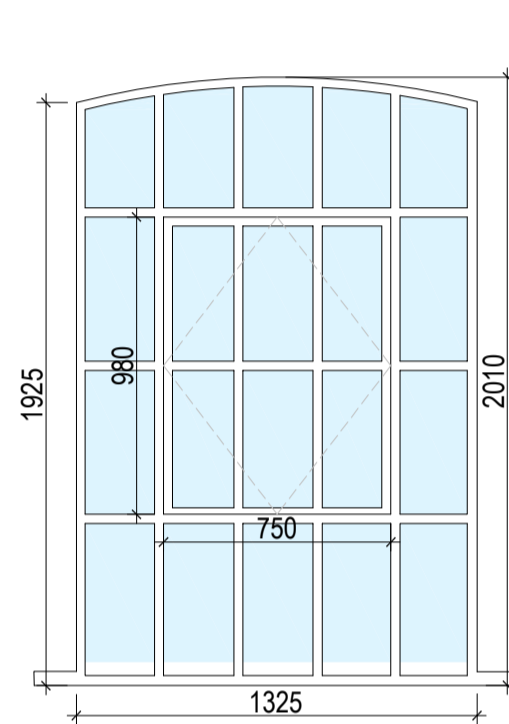
SCALE 1:25
TYPE 18 (WT-18)



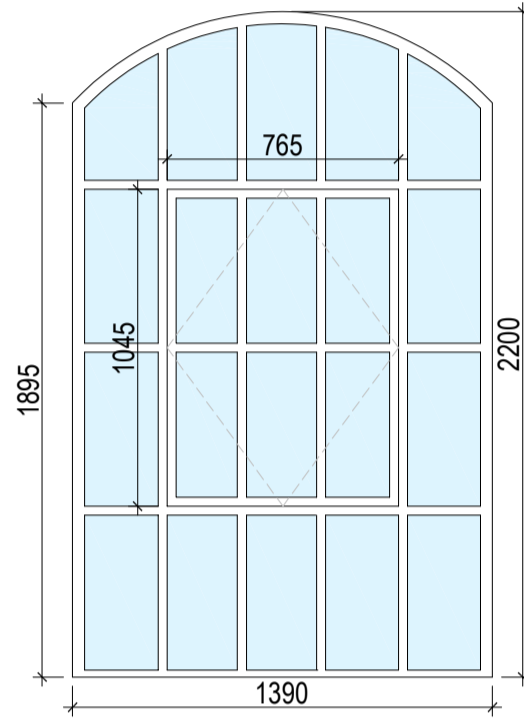
SCALE 1:25
TYPE 19 (WT-19)



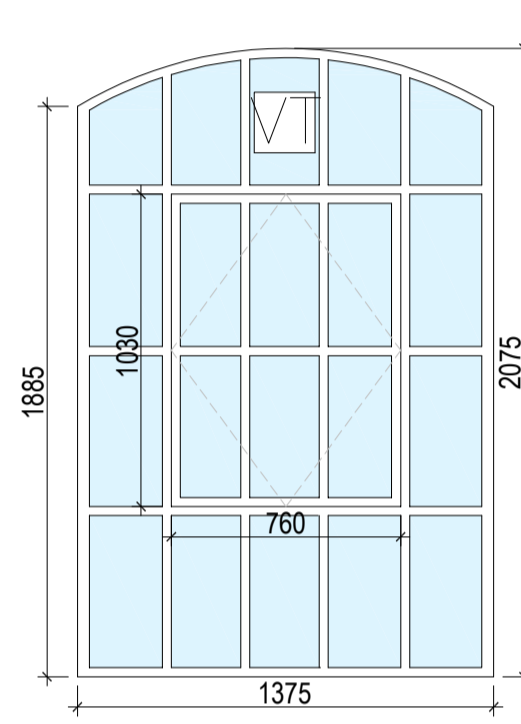
SCALE 1:25
TYPE 20 (WT-20)



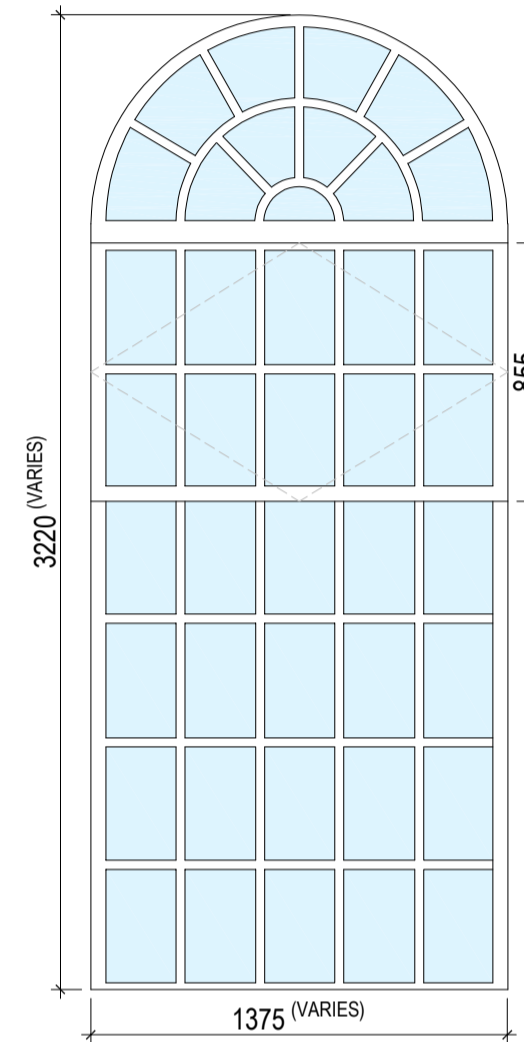
SCALE 1:25
TYPE 21 (WT-21)



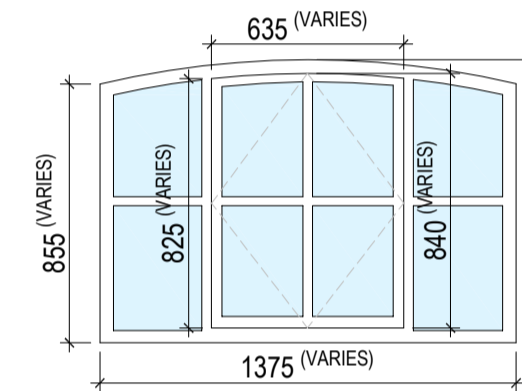
SCALE 1:25
TYPE 22 (WT-22)



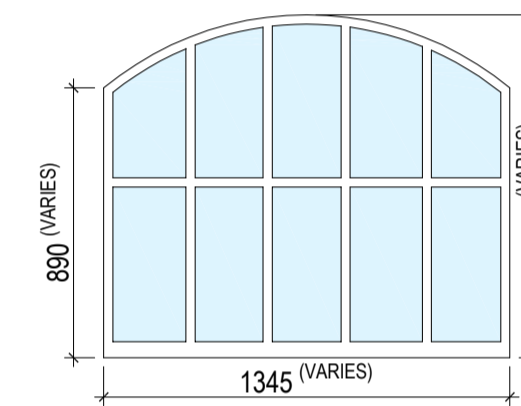
SCALE 1:25
TYPE 23 (WT-23)



SCALE 1:25
TYPE 24 (WT-24)



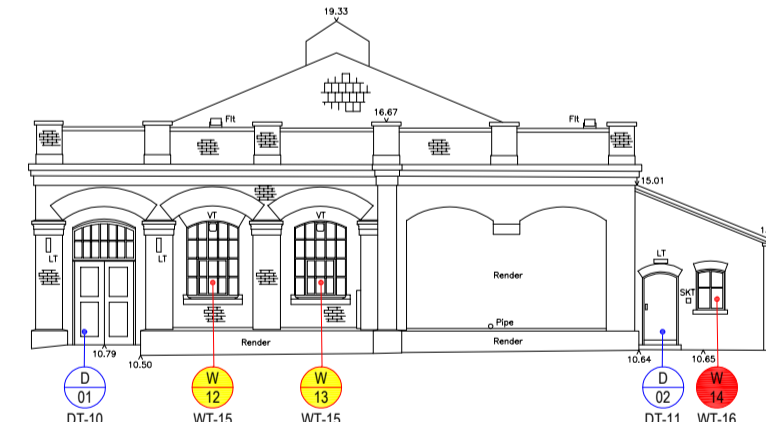
SCALE 1:25
TYPE 25 (WT-25)



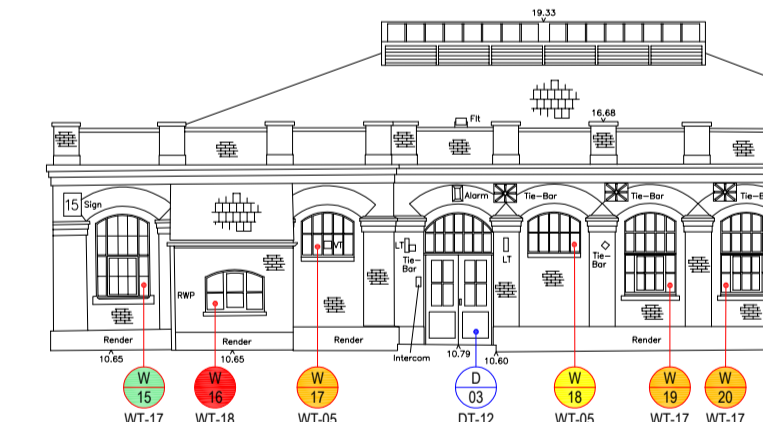
SCALE 1:25
TYPE 05 (WT-05)



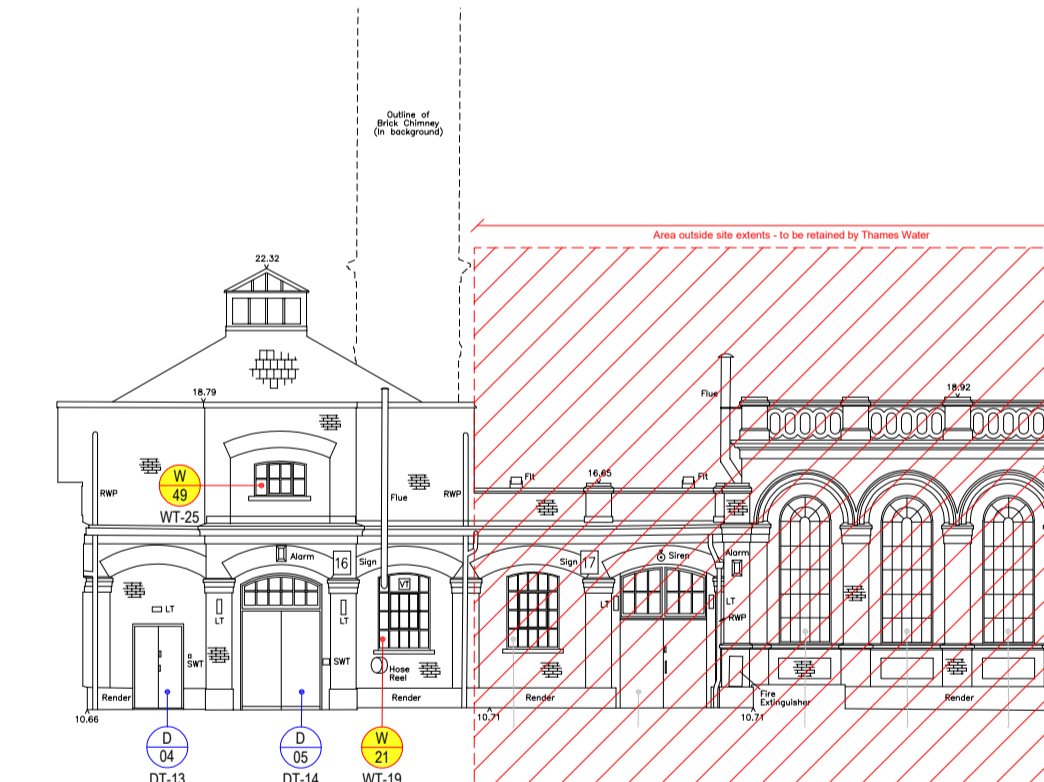
SCALE 1:200
RUSTON & WARD
ELEVATION 1 - EXISTING



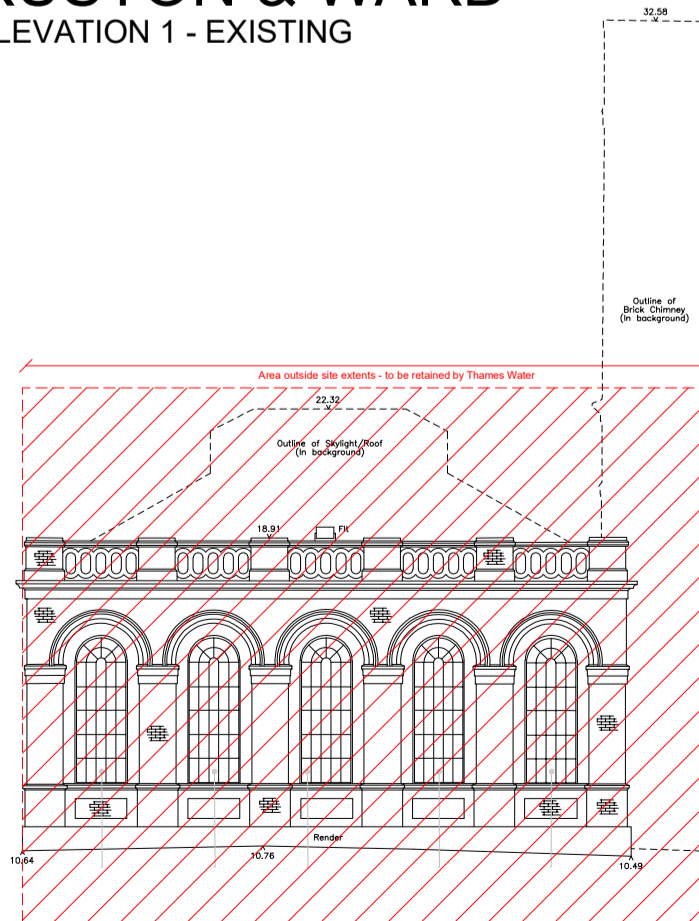
SCALE 1:200
RUSTON & WARD
ELEVATION 2 - EXISTING



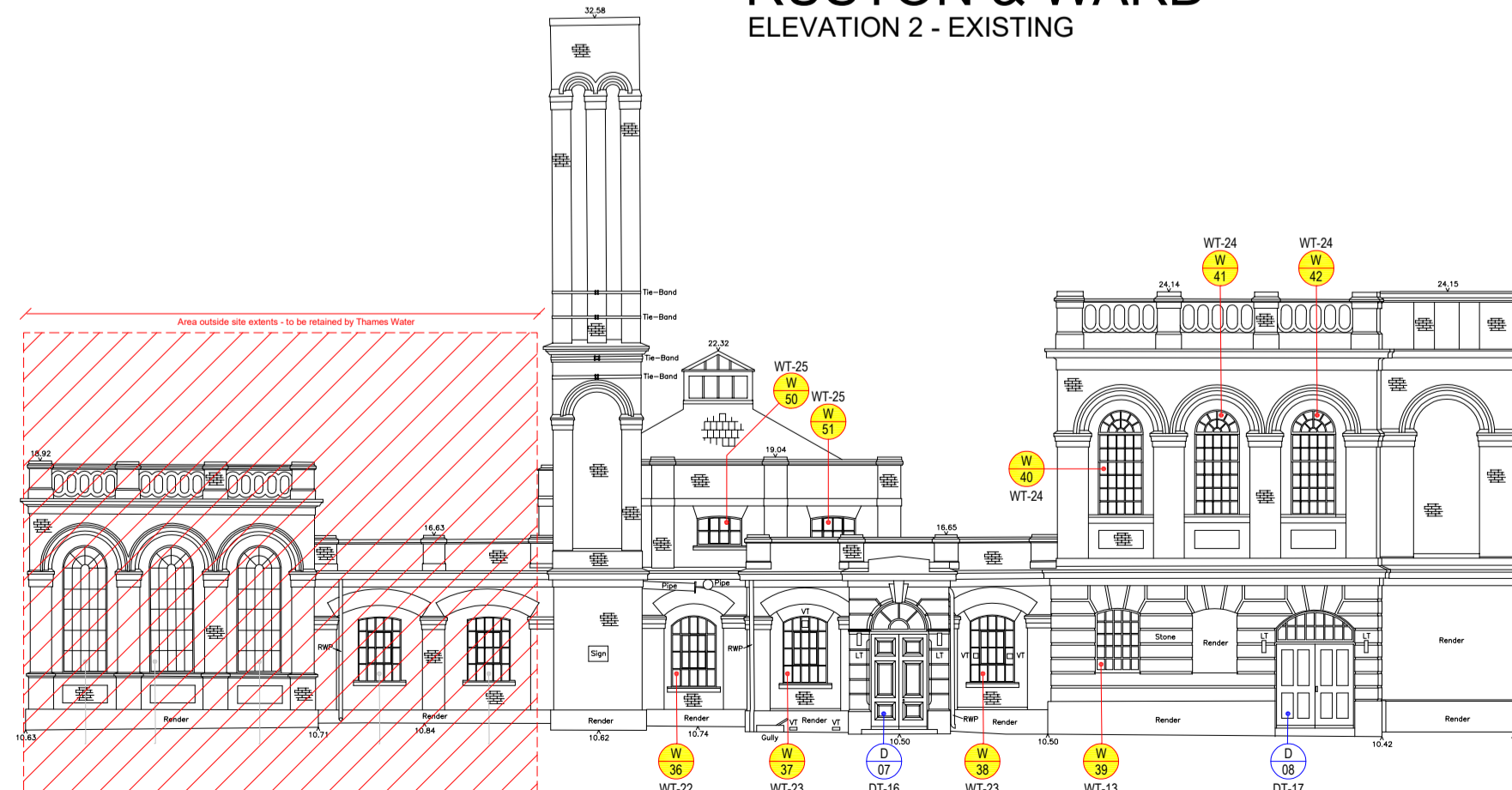
SCALE 1:200
RUSTON & WARD
ELEVATION 3 - EXISTING



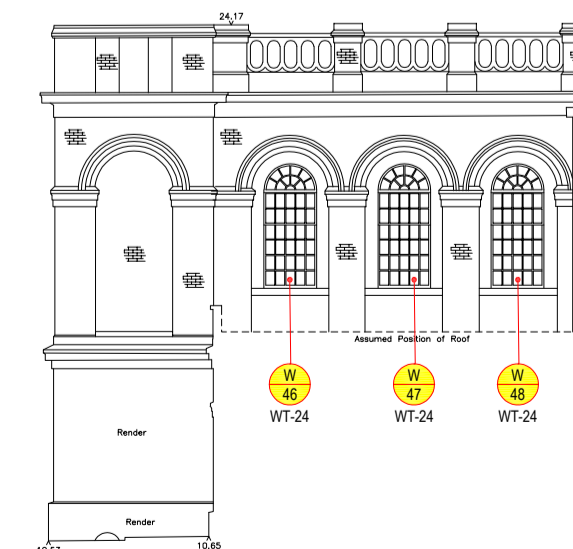
SCALE 1:200
RUSTON & WARD
ELEVATION 4 - EXISTING



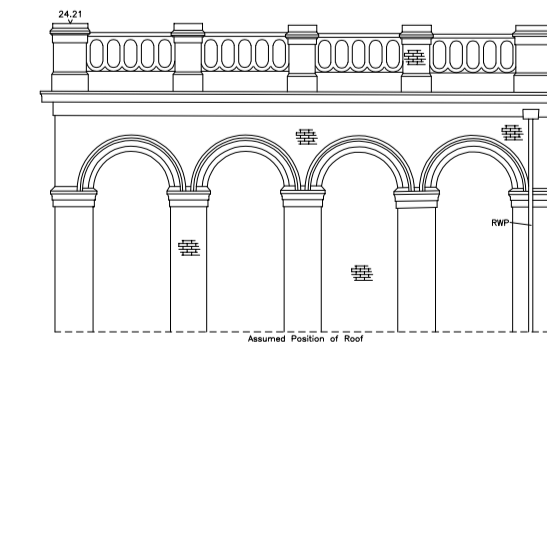
SCALE 1:200
RUSTON & WARD
ELEVATION 5 - EXISTING



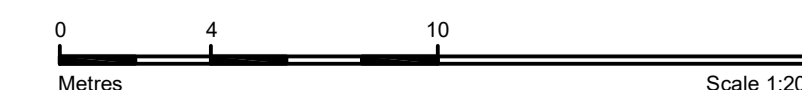
SCALE 1:200
RUSTON & WARD
ELEVATION 6 - EXISTING



SCALE 1:200
RUSTON & WARD
ELEVATION 7 - EXISTING



SCALE 1:200
RUSTON & WARD
ELEVATION 8 - EXISTING



USE OF DRAWINGS

DO NOT SCALE FROM THIS DRAWING. USE WRITTEN DIMENSIONS AND CHECK ON SITE. THIS DRAWING IS BASED ON SITE INFORMATION SUPPLIED BY THIRD PARTIES AND ACCURACY OF EXISTING FEATURES IS NOT GUARANTEED. ANY ERROR, OMISSION OR DISCREPANCY NOTED ON OR BETWEEN DRAWINGS AND OTHER DOCUMENTS MUST BE REPORTED IN WRITING IMMEDIATELY. ALL MECHANICAL, ELECTRICAL AND STRUCTURAL LAYOUTS / COMPONENTS ARE INDICATIVE AND MUST BE DESIGNED AND CHECKED BY SPECIALISTS. DO NOT START WORK ON SITE BEFORE CONFIRMING THAT ALL NECESSARY STATUTORY AND OTHER CONSENTS HAVE BEEN OBTAINED. THIS DRAWING IS COPYRIGHT AND MUST NOT BE DISTRIBUTED WITHOUT PERMISSION. ELECTRONIC CAD FILES MUST NOT BE ALTERED OR COPIED.

REVISIONS

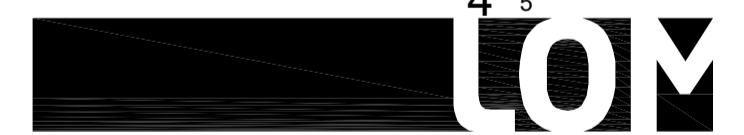
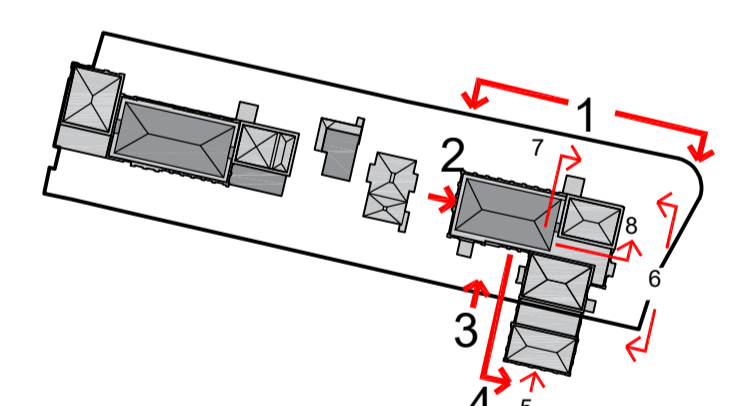
REV	DATE	DESCRIPTION	CHECKED	DRAWN
-	02.09.2022	INITIAL ISSUE	OC	JF
A	26.05.2023	HISTORIC ENGLAND FOR COMMENT	JF	JF

NOTE:
SURVEY INFORMATION BY M.J. REES AND COMPANY LTD, CHARTERED LAND SURVEYORS

CODE REF.	CONDITION	REQUIRED ACTION
1	VERY GOOD	Minimal defects, preventative maintenance, little/no work required
2	GOOD	Minor deterioration, condition based maintenance and repair in-situ possible.
3	FAIR	Fair deterioration, material function impaired, repair in-situ possible or offsite unit repairs
4	POOR	Critical deterioration over a large portion of components, part replacement required
5	URGENT	Extreme failure has occurred throughout, replacement replicated to match.
6	N/A	No restoration works required as new intervention proposed

NOTE:
THIS DOCUMENT IS TO BE READ IN CONJUNCTION WITH THE FOLLOWING CONDITION SURVEY PHOTO RECORD 1685-A-606 RUSTON & WARD WINDOW PHOTO RECORD

IN PROGRESS



client
WATERFALL
PLANNING LTD

project
HAMPTON WATERWORKS

drawing title
EXISTING WINDOW TYPES
RUSTON & WARD

sheet size scale
A1 1:200 & 1:25 @ A1

status
PRELIMINARY

drawing no. revision
1685-A-P049 A

LOM architecture and design
The Glass House 5 Sclater Street London E1 6JY UK
Phone +44(0)20 8444 2999 Email mail@lom-arp.com
Web www.lom-architecture.com