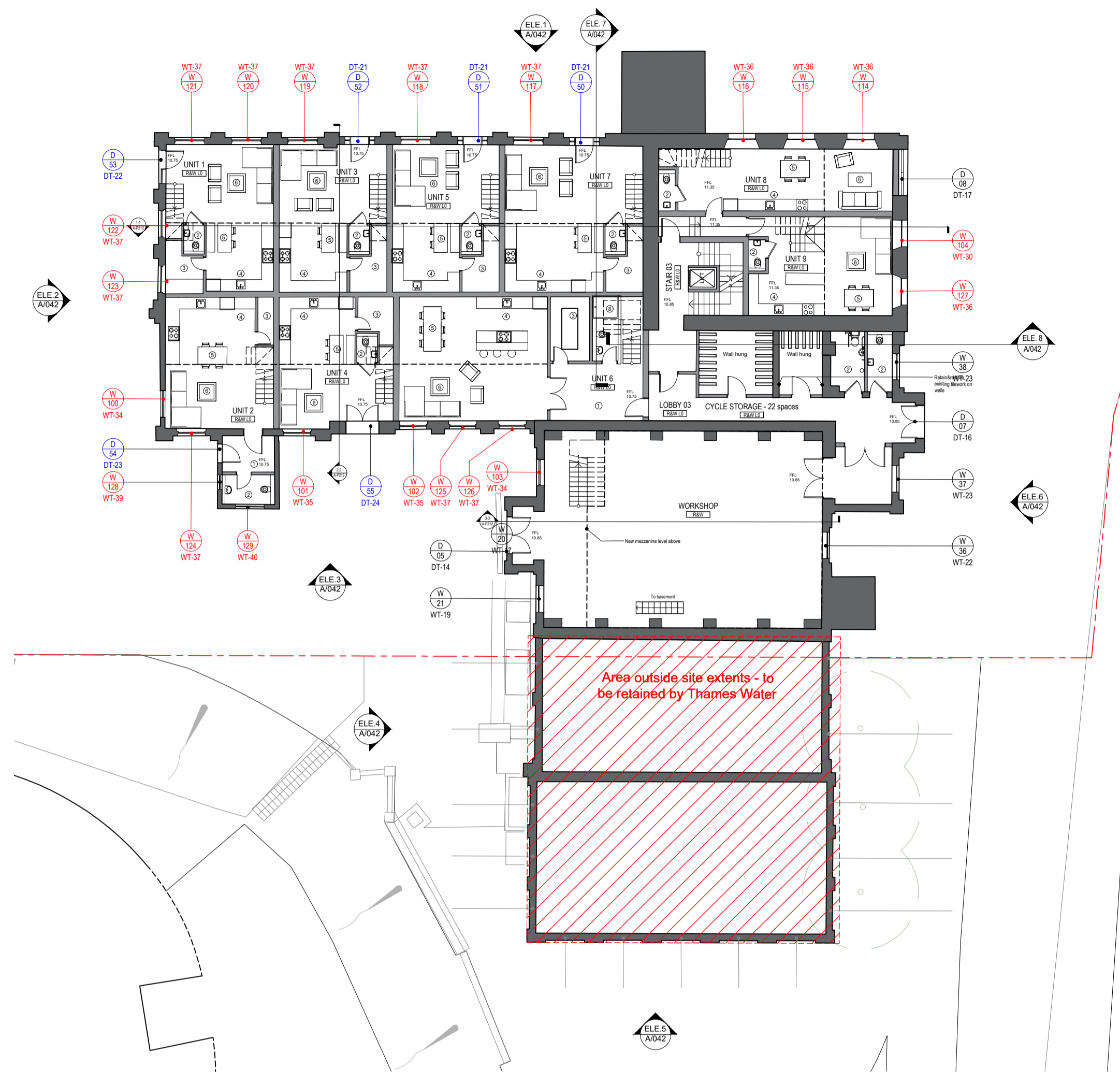


USE OF DRAWINGS
 DO NOT SCALE FROM THIS DRAWING. USE WRITTEN DIMENSIONS AND CHECK ON SITE. THIS DRAWING IS BASED ON SITE INFORMATION SUPPLIED BY THIRD PARTIES AND ACCURACY OF EXISTING FEATURES IS NOT GUARANTEED. ANY ERROR, OMISSION OR DISCREPANCY NOTED ON OR BETWEEN DRAWINGS AND OTHER DOCUMENTS MUST BE REPORTED IN WRITING IMMEDIATELY. ALL MECHANICAL, ELECTRICAL AND STRUCTURAL LAYOUTS / COMPONENTS ARE INDICATIVE AND MUST BE DESIGNED AND CHECKED BY SPECIALISTS. DO NOT START WORK ON SITE BEFORE CONFIRMING THAT ALL NECESSARY STATUTORY AND OTHER CONSENTS HAVE BEEN OBTAINED. THIS DRAWING IS COPYRIGHT AND MUST NOT BE DISTRIBUTED WITHOUT PERMISSION. ELECTRONIC CAD FILES MUST NOT BE ALTERED OR COPIED.

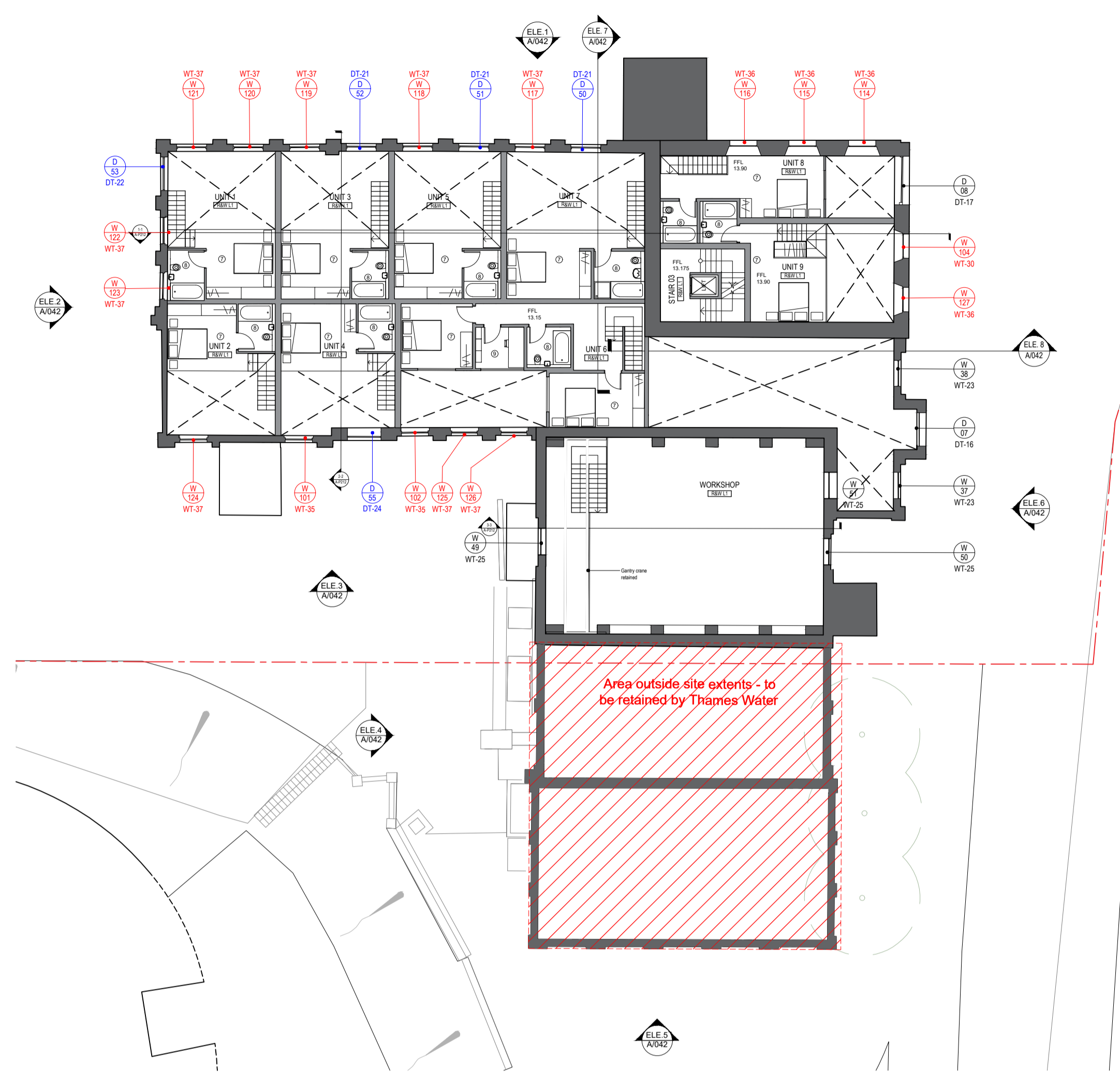
REVISIONS

REV	DATE	DESCRIPTION	CHECKED
-	02.09.2022	INITIAL ISSUE	OC JF
A	06.10.2022	GENERAL UPDATE	LW JF

NOTE:
 SURVEY INFORMATION BY M.J. REES AND COMPANY LTD, CHARTERED LAND SURVEYORS

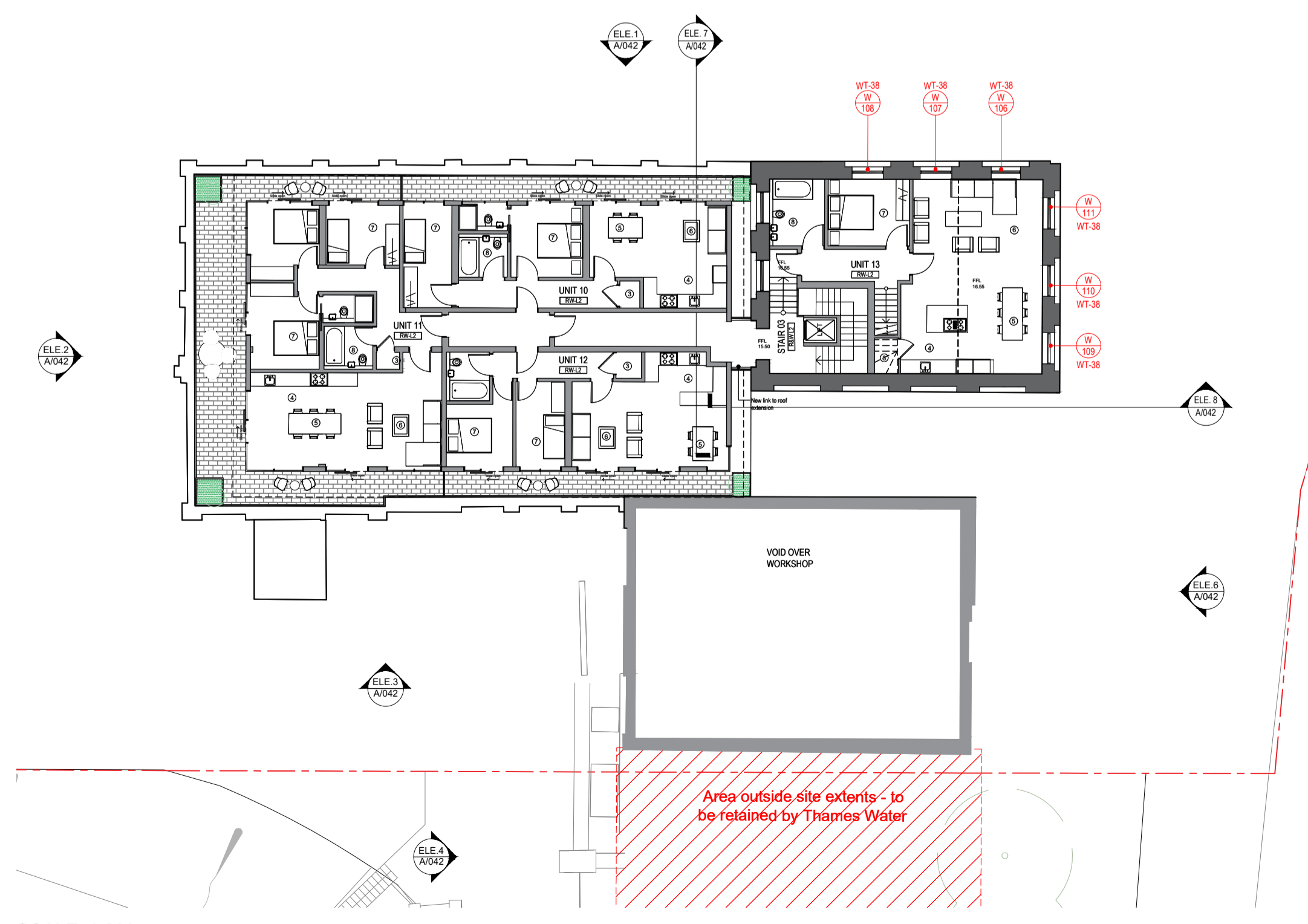


SCALE 1:200
RUSTON & WARD - LEVEL 00 WINDOW LOCATION PLAN - PROPOSED

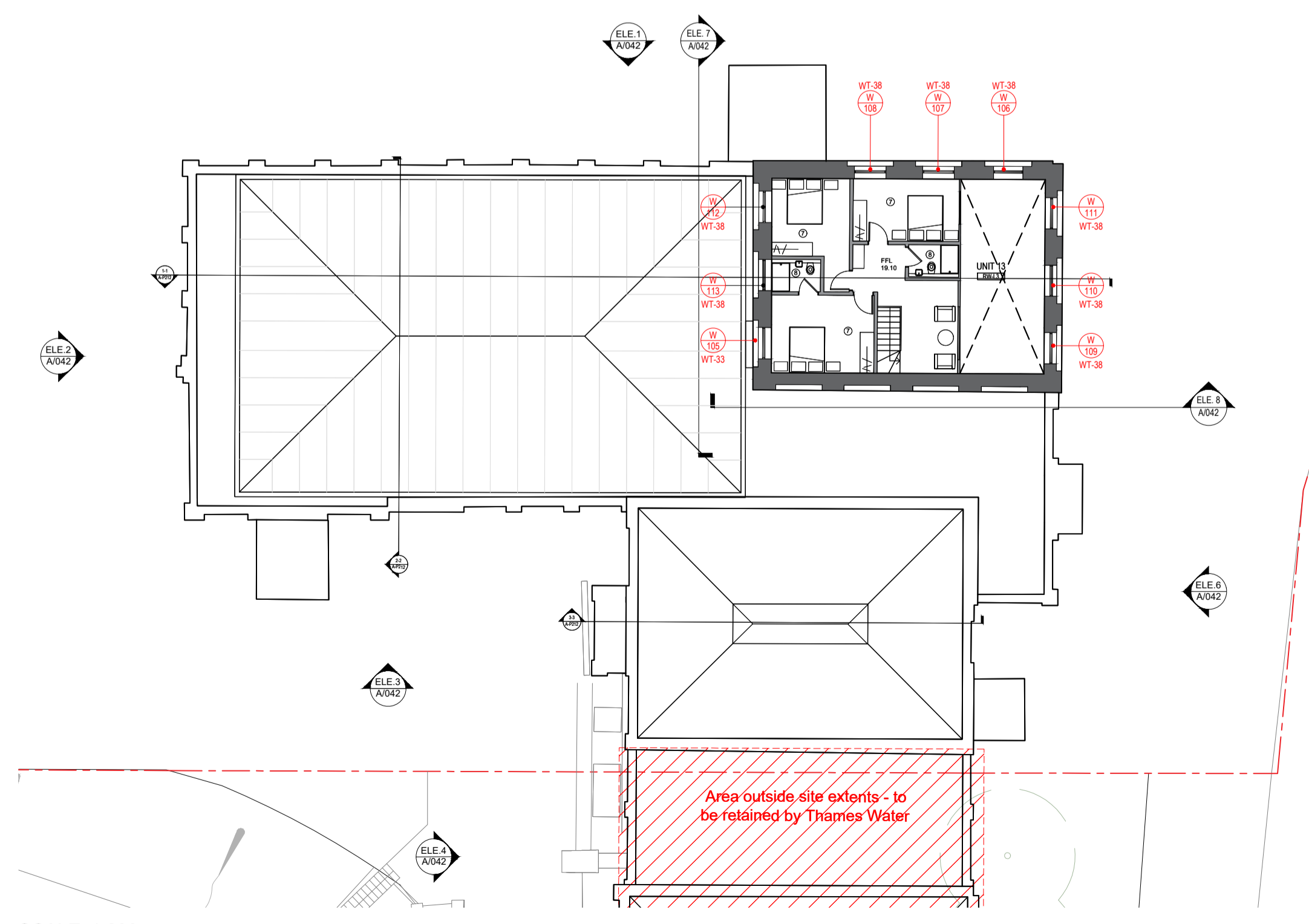


SCALE 1:200
RUSTON & WARD - LEVEL 01 WINDOW LOCATION PLAN - PROPOSED

IN PROGRESS



SCALE 1:200
RUSTON & WARD - LEVEL 02 WINDOW LOCATION PLAN - PROPOSED



SCALE 1:200
RUSTON & WARD - LEVEL 03 WINDOW LOCATION PLAN - PROPOSED



client
WATERFALL HAMPTON INVESTMENT LTD

project
HAMPTON WATERWORKS

drawing title
PROPOSED WINDOW LOCATION PLAN - RUSTON & WARD

sheet size scale
A1 1:200 @ A1

status
PRELIMINARY

drawing no. revision
1685-A-P052 A

LOM architecture and design
 The Glass House 5 Sclater Street London E1 6JY UK
 Phone +44(0)20 8444 2999 Email mail@lom-fdp.com
 Web www.lom-architecture.com

