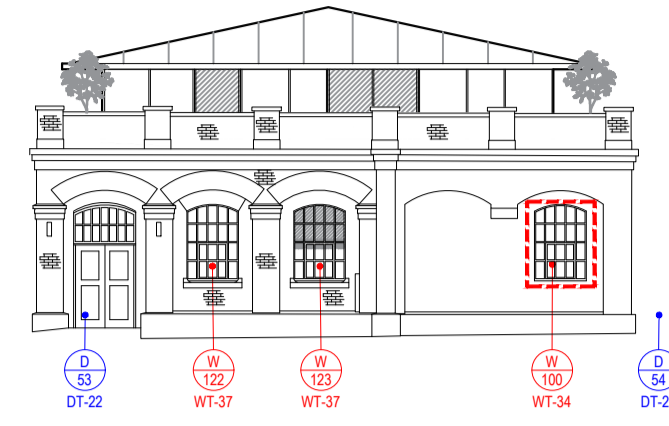
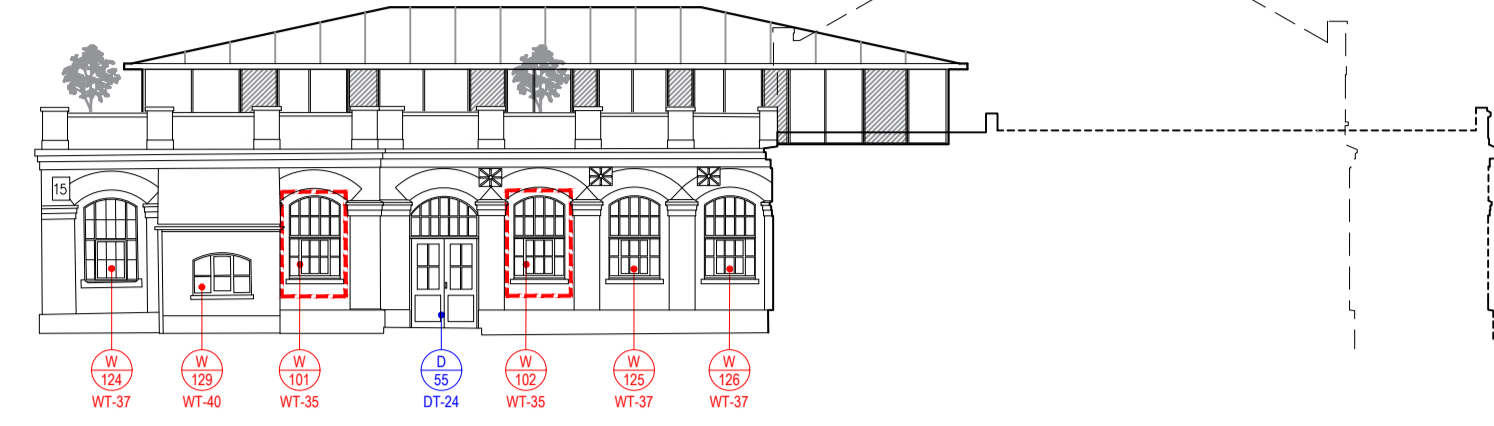


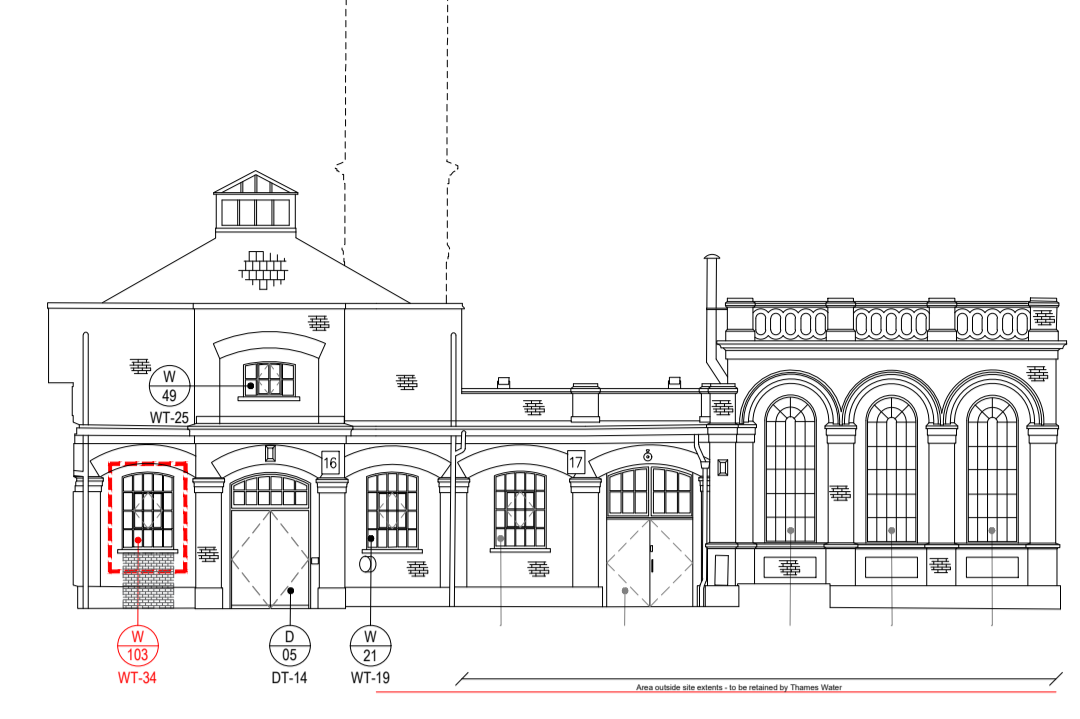
SCALE 1:200  
RUSTON & WARD  
ELEVATION 1 - PROPOSED



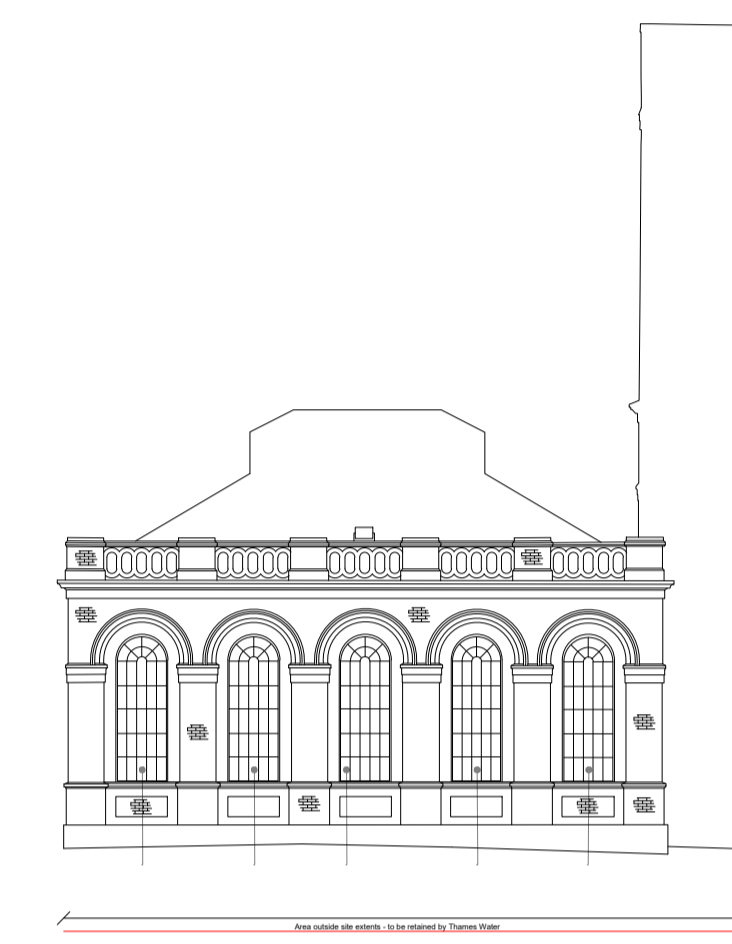
SCALE 1:200  
RUSTON & WARD  
ELEVATION 2 - PROPOSED



SCALE 1:200  
RUSTON & WARD  
ELEVATION 3 - PROPOSED



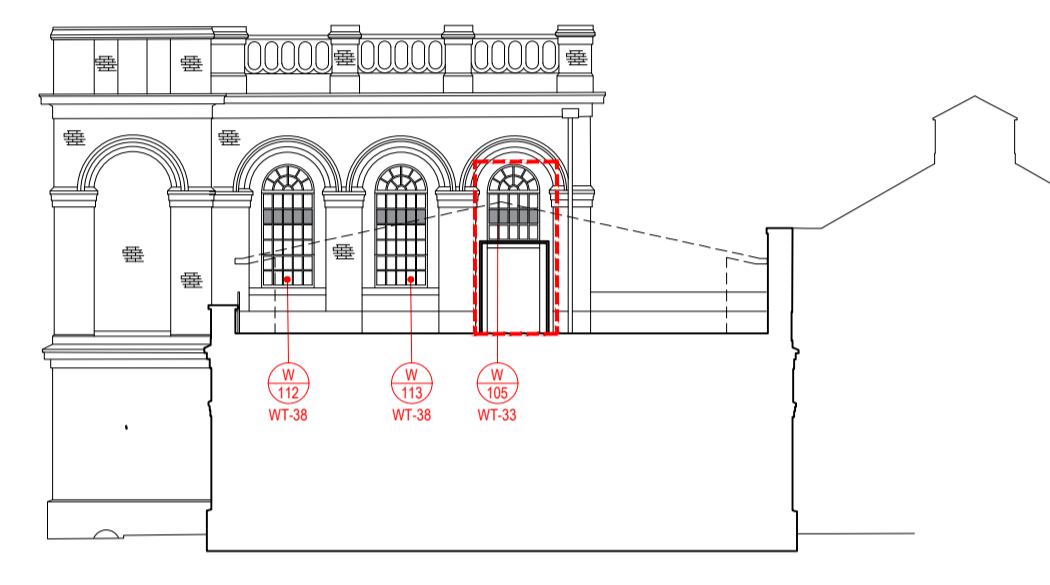
SCALE 1:200  
RUSTON & WARD  
ELEVATION 4 - PROPOSED



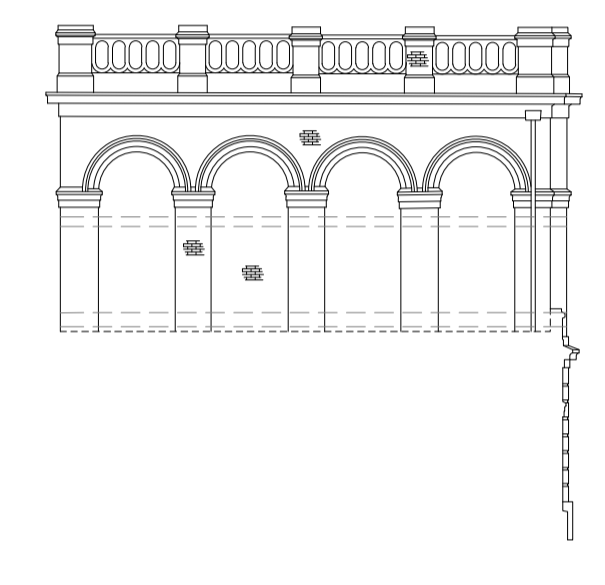
SCALE 1:200  
RUSTON & WARD  
ELEVATION 5 - PROPOSED



SCALE 1:200  
RUSTON & WARD  
ELEVATION 6 - PROPOSED

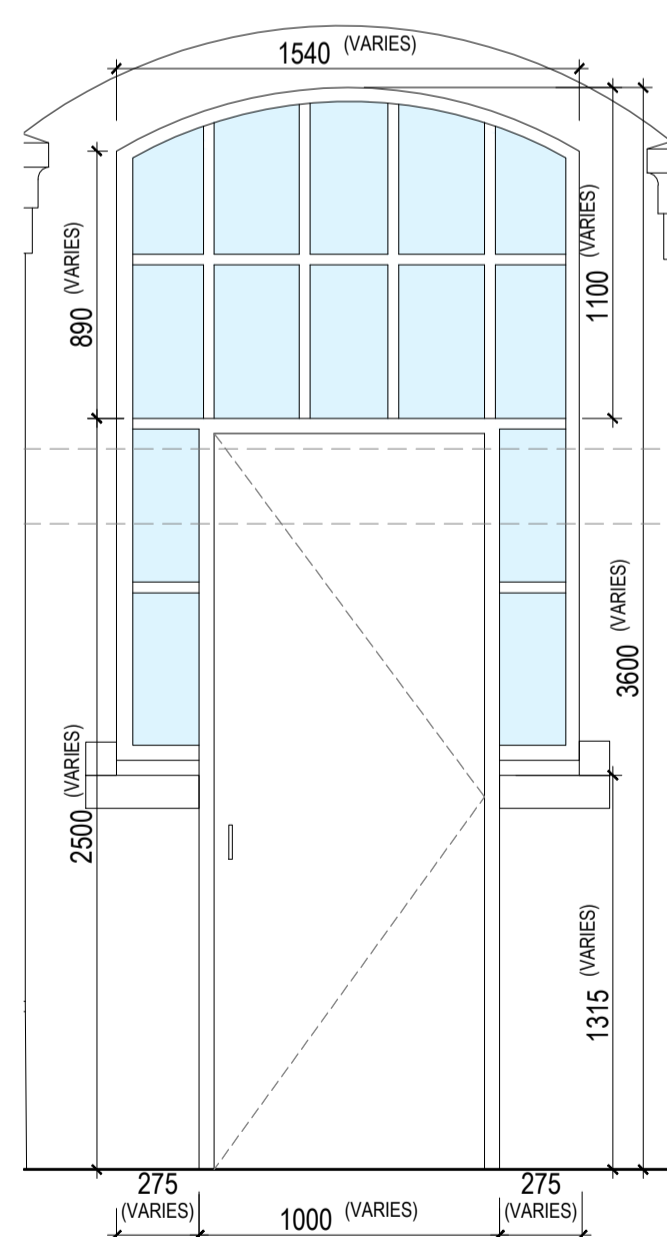


SCALE 1:200  
RUSTON & WARD  
ELEVATION 7 - PROPOSED

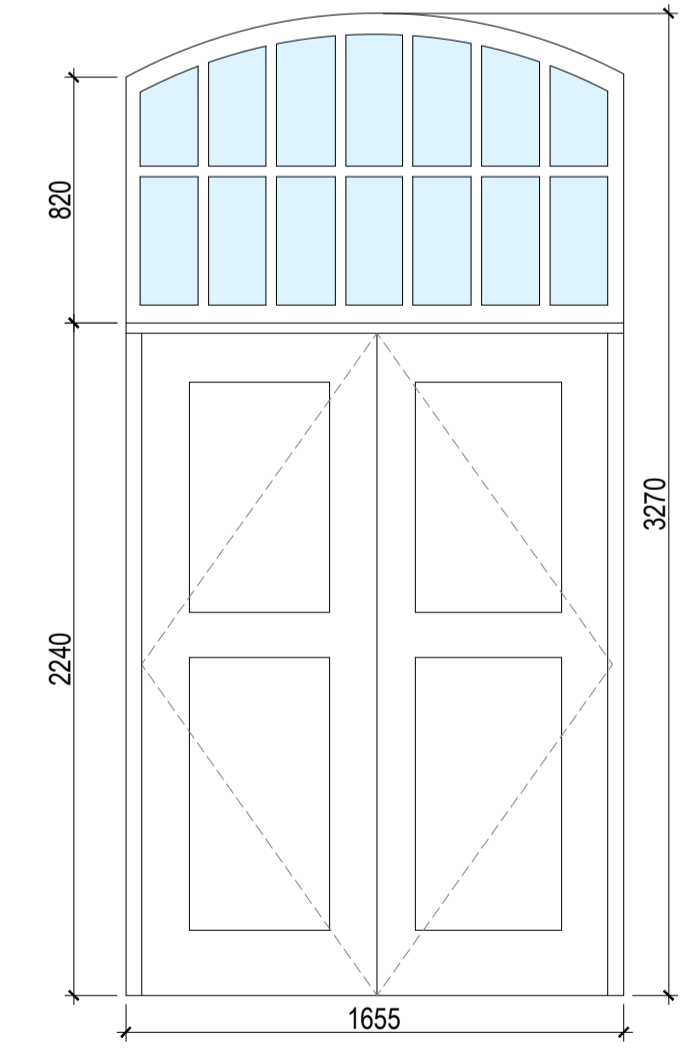


SCALE 1:200  
RUSTON & WARD  
ELEVATION 8 - PROPOSED

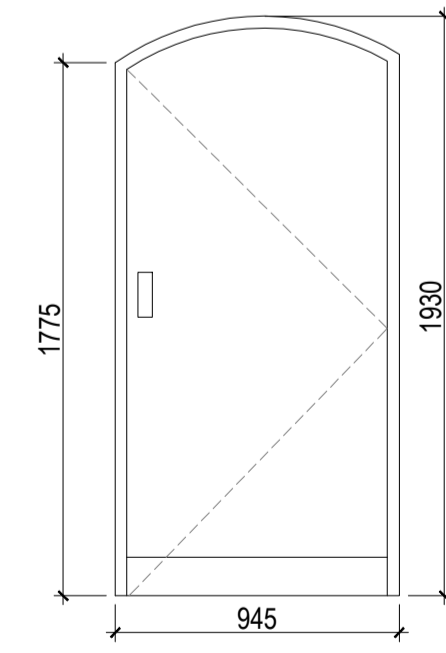
**PROPOSED DOOR TYPES**



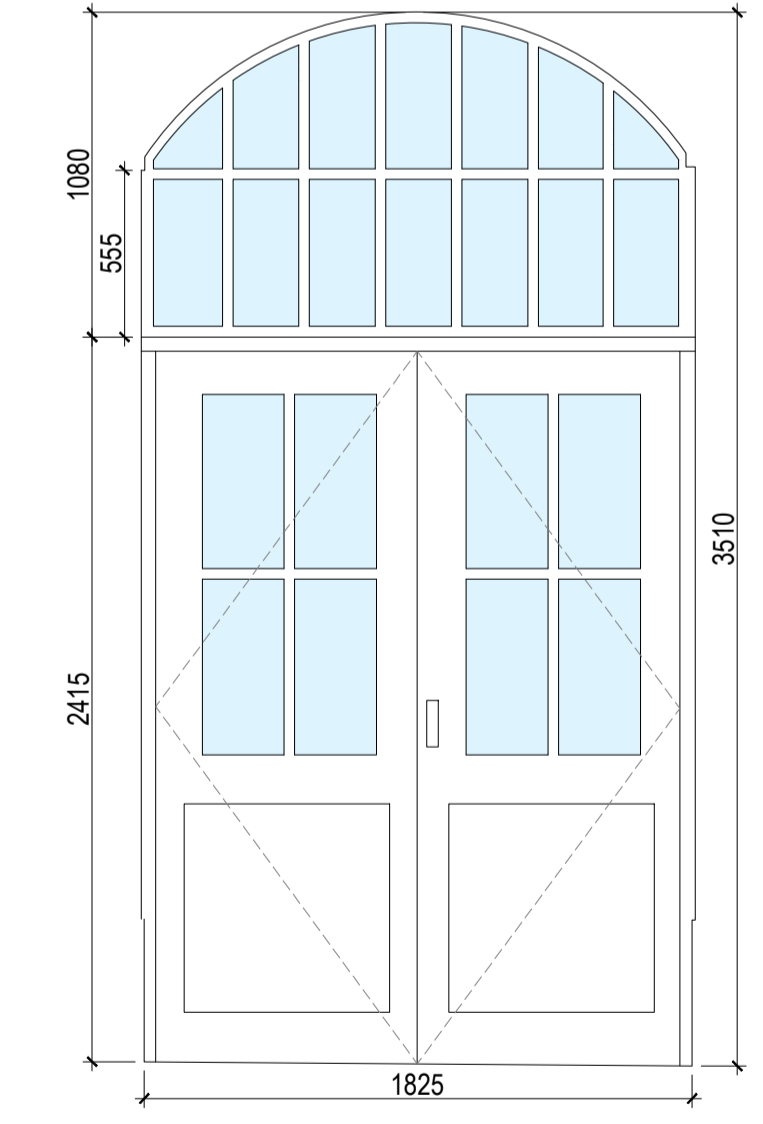
SCALE 1:20  
TYPE 21 (DT-21)



SCALE 1:20  
TYPE 22 (DT-22)



SCALE 1:20  
TYPE 23 (DT-23)



SCALE 1:20  
TYPE 24 (DT-24)

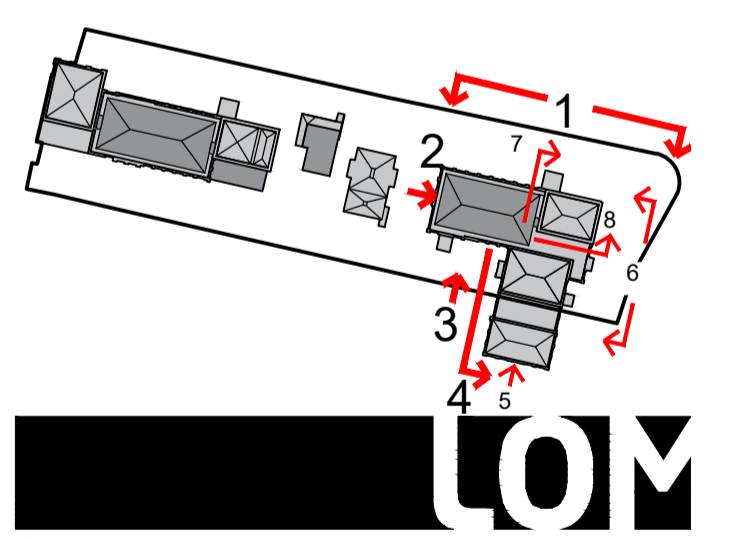
RUSTON & WARD - PROPOSED DOOR SCHEDULE												
REF.	DOOR TYPE	LOCATION	DOOR WIDTH	DOOR HEIGHT	STRUCTURAL OPENING Wmm x Hmm / Arch Height	DOOR LEAF TYPE	ADDITIONAL FEATURES	DESCRIPTION (WOOD, ALUMINIUM, IRON, UPVC)	GLAZING TYPE	PROPOSAL	SECONDARY GLAZING	OTHER COMMENTS
D-50	TYPE 21/ DT-21	RUSTON & WARD ELEVATION 1	1000	2300	1540 X 3400 INCL. 2 X 275MM EQUAL SIDELIGHTS & 1100MM ARCH'D WINDOW OVER	SINGLE	SIDELIGHTS 1150 ABOVE FFL	ALUMINIUM / TIMBER	DOUBLE	REPLACING EXISTING WINDOW. REF. W14 (RUSTON & WARD)	N/A	N/A
D-51	TYPE 21/ DT-21	RUSTON & WARD ELEVATION 1	1000	2480	1540 X 3580 INCL. 2 X 275MM EQUAL SIDELIGHTS & 1100MM ARCH'D WINDOW OVER	SINGLE	SIDELIGHTS 1340 ABOVE FFL	ALUMINIUM / TIMBER	DOUBLE	REPLACING EXISTING WINDOW. REF. W16 (RUSTON & WARD)	N/A	N/A
D-52	TYPE 21/ DT-21	RUSTON & WARD ELEVATION 1	1000	2480	1540 X 3580 INCL. 2 X 275MM EQUAL SIDELIGHTS & 1100MM ARCH'D WINDOW OVER	SINGLE	SIDELIGHTS 1320 ABOVE FFL	ALUMINIUM / TIMBER	DOUBLE	REPLACING EXISTING WINDOW. REF. W18 (RUSTON & WARD)	N/A	N/A
D-53	TYPE 22/ DT-22	RUSTON & WARD ELEVATION 2	1655	2240	1655 X 2240 WITH ARCH'D TRANSOM WINDOW OVER. O'ALL HEIGHT 3270	DOUBLE	N/A	ALUMINIUM / TIMBER	DOUBLE	REPLACING EXISTING WINDOW. REF. W11 (RUSTON & WARD)	N/A	N/A
D-54	TYPE 23/ DT-23	RUSTON & WARD ELEVATION 2	945	1930	945 X 1775/1930	SINGLE	N/A	ALUMINIUM / TIMBER	N/A	REPLACING EXISTING WINDOW. REF. W12 (RUSTON & WARD)	N/A	N/A
D-55	TYPE 24/ DT-24	RUSTON & WARD ELEVATION 3	1825	2415	1825 X 2415 WITH ARCH'D TRANSOM WINDOW OVER. O'ALL HEIGHT 3510	DOUBLE	N/A	ALUMINIUM / TIMBER	DOUBLE	REPLACING EXISTING WINDOW. REF. W13 (RUSTON & WARD)	N/A	N/A

**USE OF DRAWINGS**  
DO NOT SCALE FROM THIS DRAWING. USE WRITTEN DIMENSIONS AND CHECK ON SITE. THIS DRAWING IS BASED ON SITE INFORMATION SUPPLIED BY THIRD PARTIES AND ACCURACY OF EXISTING FEATURES IS NOT GUARANTEED. ANY ERROR, OMISSION OR DISCREPANCY NOTED ON OR BETWEEN DRAWINGS AND OTHER DOCUMENTS MUST BE REPORTED IN WRITING IMMEDIATELY. ALL MECHANICAL, ELECTRICAL AND STRUCTURAL LAYOUTS / COMPONENTS ARE INDICATIVE AND MUST BE DESIGNED AND CHECKED BY SPECIALISTS. DO NOT START WORK ON SITE BEFORE CONFIRMING THAT ALL NECESSARY STATUTORY AND OTHER CONSENTS HAVE BEEN OBTAINED. THIS DRAWING IS COPYRIGHT AND MUST NOT BE DISTRIBUTED WITHOUT PERMISSION. ELECTRONIC CAD FILES MUST NOT BE ALTERED OR COPIED.

REVISIONS			CHECKED
REV	DATE	DESCRIPTION	DRAWN
-	02.09.2022	INITIAL ISSUE	OC JF
A	06.10.2022	GENERAL UPDATE	LW JF

**NOTE:**  
SURVEY INFORMATION BY M.J. REES AND COMPANY LTD, CHARTERED LAND SURVEYORS

**IN PROGRESS**



client  
**WATERFALL  
PLANNING LTD**

project  
**HAMPTON WATERWORKS**

drawing title  
**PROPOSED DOOR  
TYPES & SCHEDULE - EXISTING  
RUSTON & WARD EXT. FABRIC**

sheet size scale  
**A1 1:200 & 1:20 @ A1**

status  
**PRELIMINARY**

drawing no. revision  
**1685-A-P053 A**

**LOM architecture and design**  
The Glass House 5 Slater Street London E1 6JY UK  
Phone +44(0)20 8444 2999 Email mail@lom-fdp.com  
Web www.lom-architecture.com

