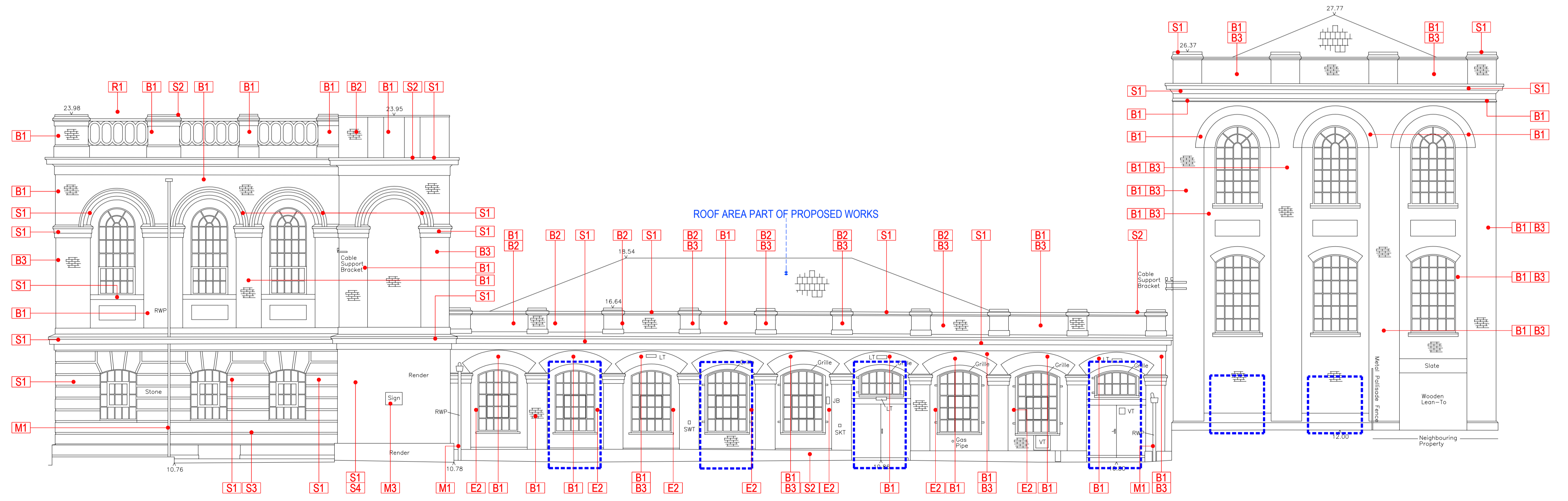


8.00m AOD

SCALE 1:100
KARSLAKE - ELEVATION 1 - EXISTING



8.00m AOD

SCALE 1:100
KARSLAKE - ELEVATION 3 - EXISTING

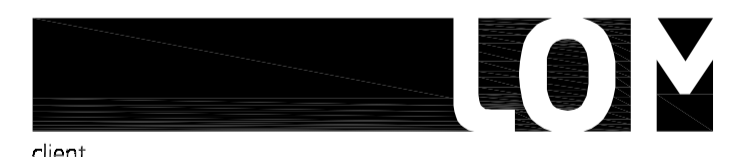
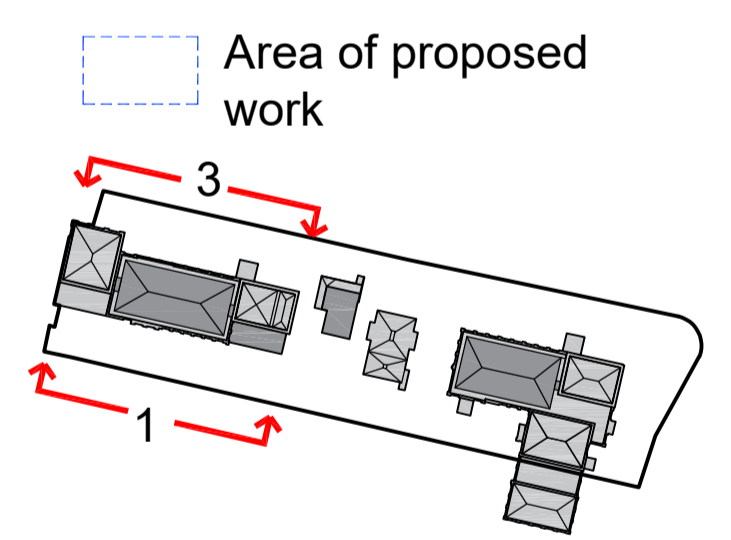
1685 - HAMPTON WATERWORKS - CONDITION SURVEY & OUTLINE RESTORATION SCHEDULE		
REF.	CONDITION DESCRIPTION	REQUIRED ACTION
BRICKWORK		
B1	Discolouration & staining	Undertake cleaning of any brickwork with associated defects restored as required.
B2	Organic growth	Remove any plant growth within finish material and restore any associated damage/defects.
B3	Minor material failure	Re-pointing any areas of mortar failure.
B4	Extensive material failure	Substantial restoration works required such as replacing or repairing any decayed bricks and re-pointing.
B5	Incorrect material from historic works	Any areas of brickwork that varies from the predominant finish type should be re-finished or replaced if required.
STONEWORK/ RENDER/ PLASTER		
S1	Discolouration & staining	Undertake cleaning of any stonework, render or plaster with associated defects restored as required.
S2	Organic growth	Remove any plant growth within finish material and restore any associated damage/defects.
S3	Minor material failure	Re-finish any discoloured areas of stonework.
S4	Defective render	Re-finish any cracked or failed render or plaster.
S5	Window sill material failure or damage	Repair or replace.
ROOFING		
R1	Organic growth	Undertake cleaning and removal of any organic growth on or around any roof areas.
R2	Minor material failure	Re-finish any discoloured areas of roofing.
R3	Extensive material failure	Substantial restoration works required such as replacing or repairing any broken tiling or roof membranes.
METALWORK		
M1	Defective rainwater goods	Replace rainwater goods with new or restore if defect is only minimal such as organic growth blockages.
M2	Flashing failure	Replace rainwater goods with new or restore if defect is only minimal.
M3	Discoloured signs or features	Undertake restoration works of any existing features or signage to be retained.
M4	Pipe work removal	Removal of any defunct or unnecessary pipe work and make good.
EXTERNAL WORKS		
E1	Repair external features	Repair existing external features as per proposal.
E2	Remove external lighting	Removal of existing external features as per proposal.

USE OF DRAWINGS
DO NOT SCALE FROM THIS DRAWING. USE WRITTEN DIMENSIONS AND CHECK ON SITE. THIS DRAWING IS BASED ON SITE INFORMATION SUPPLIED BY THIRD PARTIES AND ACCURACY OF EXISTING FEATURES IS NOT GUARANTEED. ANY ERROR, OMISSION OR DISCREPANCY NOTED ON OR BETWEEN DRAWINGS AND OTHER DOCUMENTS MUST BE REPORTED IN WRITING IMMEDIATELY. ALL MECHANICAL, ELECTRICAL AND STRUCTURAL LAYOUTS / COMPONENTS ARE INDICATIVE AND MUST BE DESIGNED AND CHECKED BY SPECIALISTS. DO NOT START WORK ON SITE BEFORE CONFIRMING THAT ALL NECESSARY STATUTORY AND OTHER CONSENTS HAVE BEEN OBTAINED. THIS DRAWING IS COPYRIGHT AND MUST NOT BE DISTRIBUTED WITHOUT PERMISSION. ELECTRONIC CAD FILES MUST NOT BE ALTERED OR COPIED.

REVISIONS			
REV	DATE	DESCRIPTION	CHECKED
-	02.09.2022	INITIAL ISSUE	OC JF
A	26.05.2023	HISTORIC ENGLAND FOR COMMENT	JF JF

NOTE:
SURVEY INFORMATION BY M.J. REES AND COMPANY LTD, CHARTERED LAND SURVEYORS

IN PROGRESS



client
WATERFALL PLANNING LTD

project
HAMPTON WATERWORKS

drawing title
**FABRIC CONDITION DRAWING -
- KARSLAKE
ELEVATIONS 1 & 3**

sheet size scale
A1 1:100 @ A1

status
PRELIMINARY

drawing no. revision
1685-A-P055 A



LOM architecture and design
The Glass House 5 Sclater Street London E1 6JY UK
Phone +44(0)20 8444 2999 Email mail@lom-arch.com
Web www.lom-architecture.com