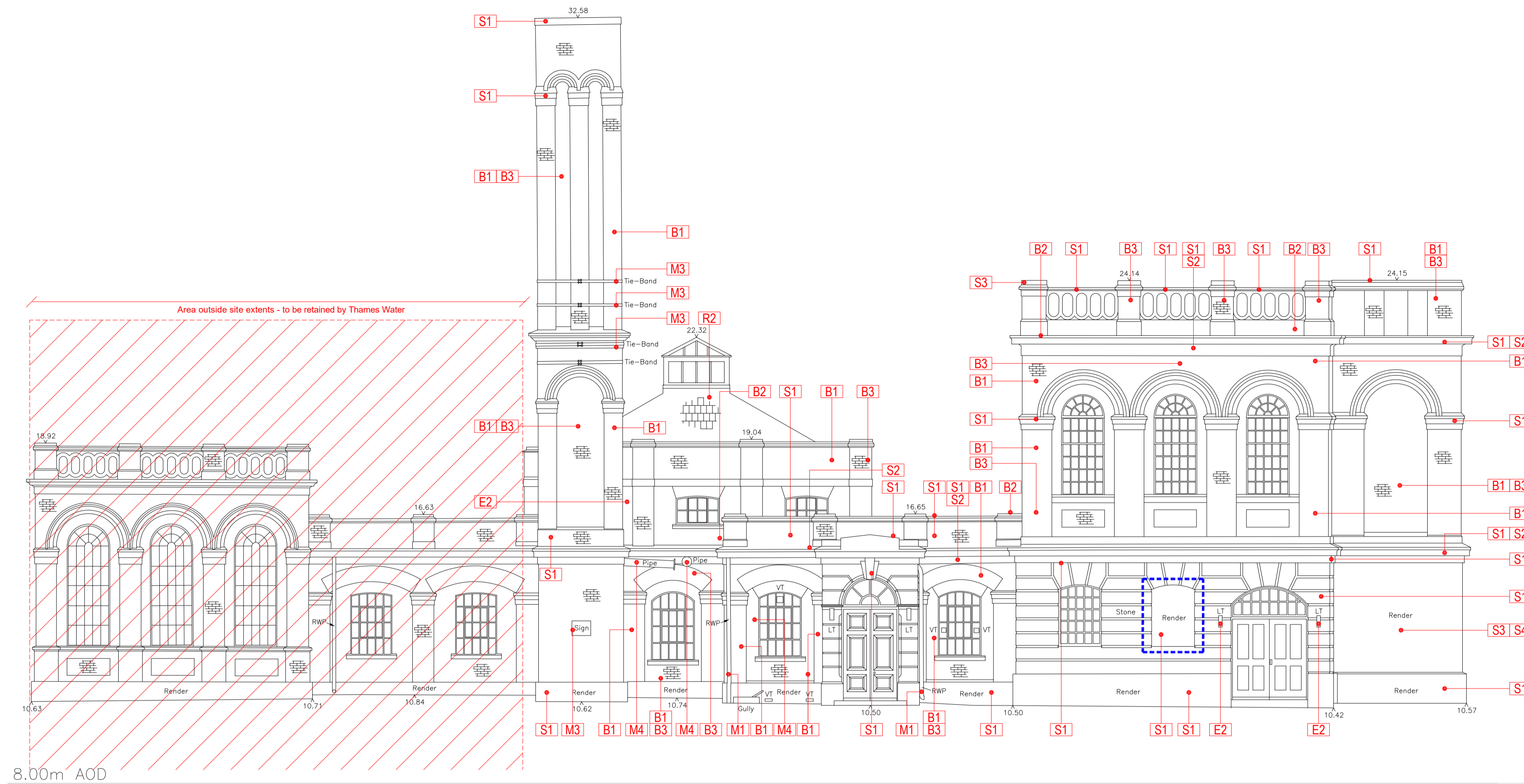
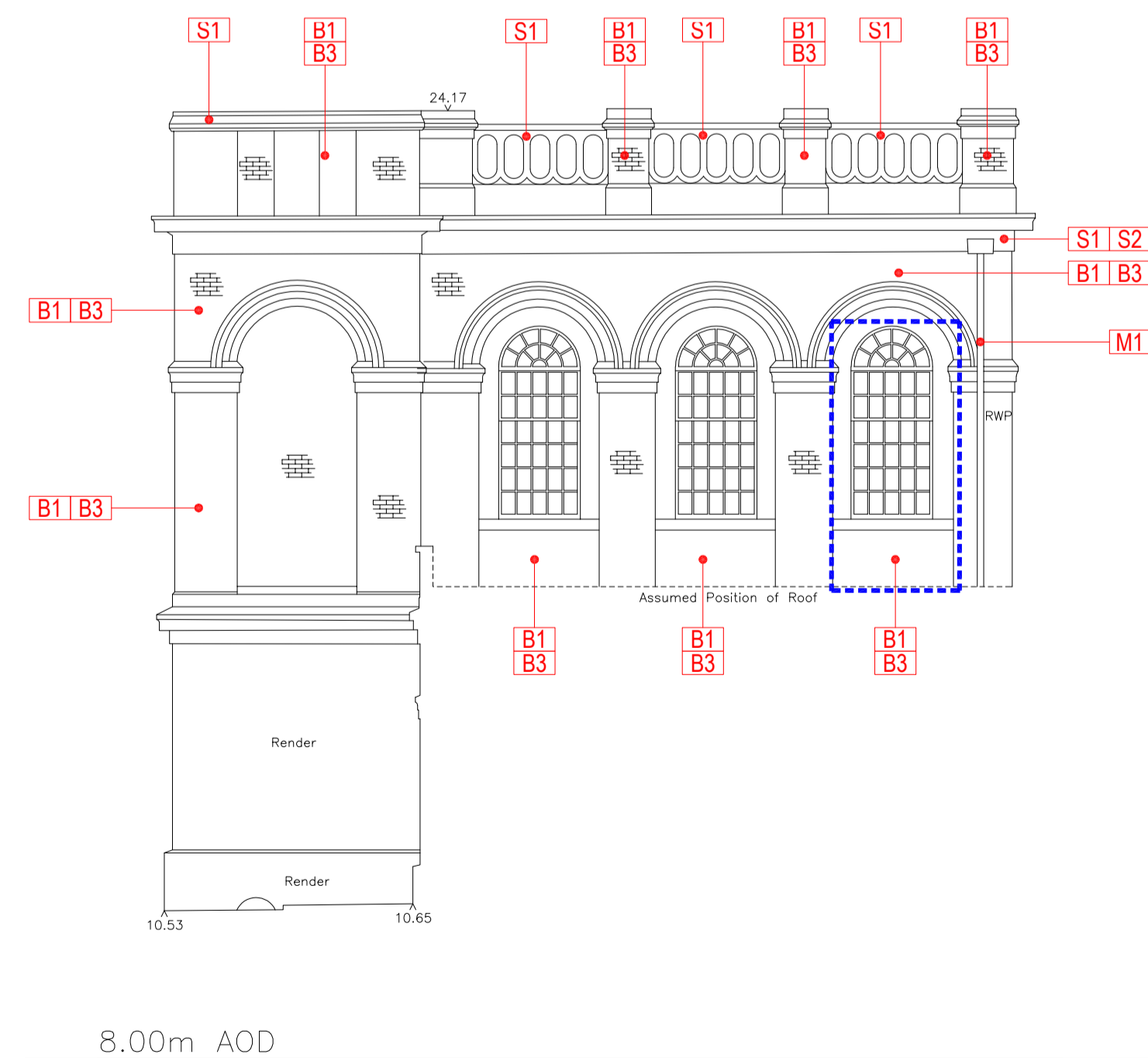


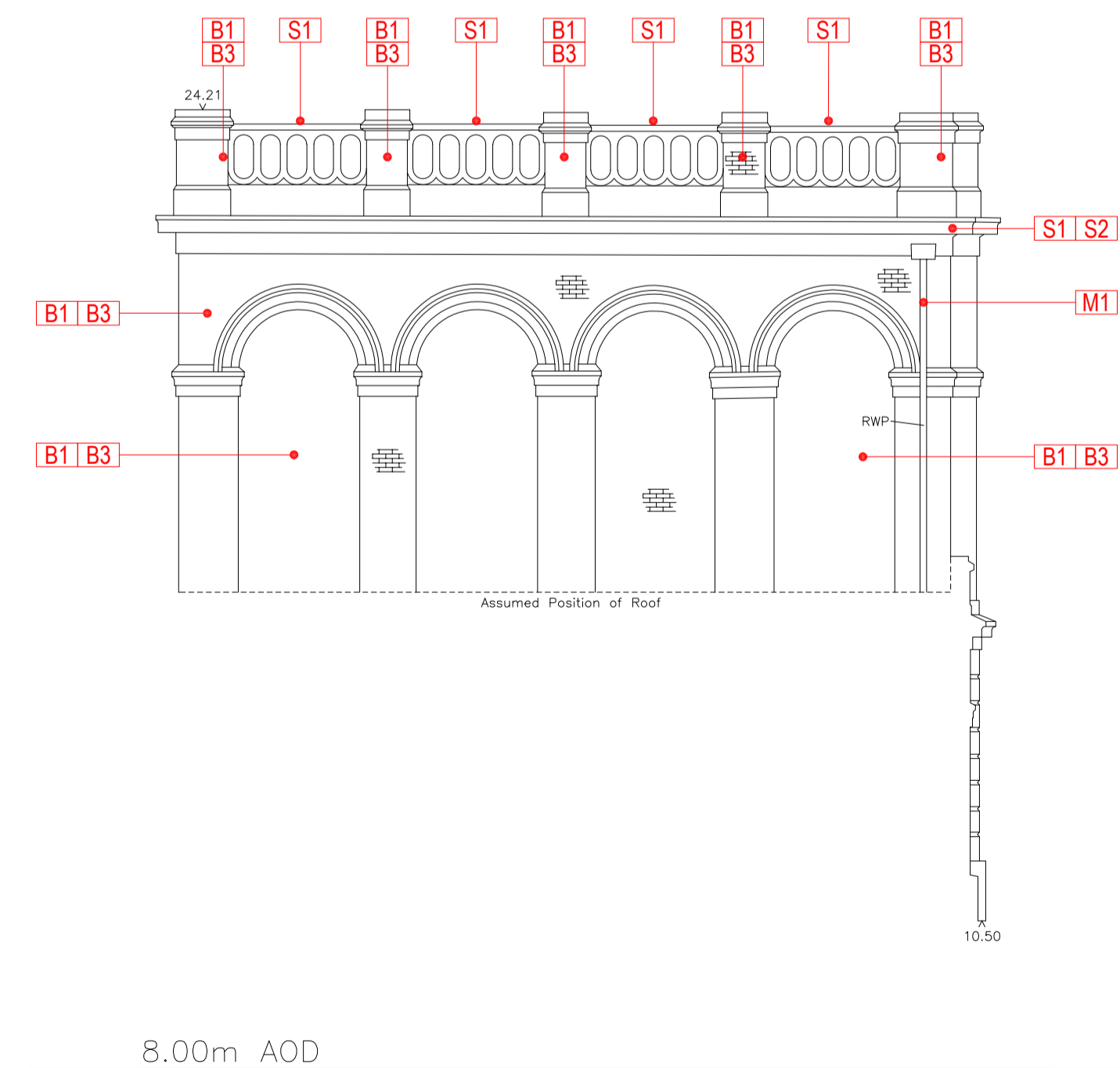
SCALE 1:100  
RUSTON & WARD - ELEVATION 5 - EXISTING



SCALE 1:100  
RUSTON & WARD - ELEVATION 6 - EXISTING



SCALE 1:100  
RUSTON & WARD - ELEVATION 7 - EXISTING



SCALE 1:100  
RUSTON & WARD - ELEVATION 8 - EXISTING

USE OF DRAWINGS

DO NOT SCALE FROM THIS DRAWING. USE WRITTEN DIMENSIONS AND CHECK ON SITE. THIS DRAWING IS BASED ON SITE INFORMATION SUPPLIED BY THIRD PARTIES AND ACCURACY OF EXISTING FEATURES IS NOT GUARANTEED. ANY ERROR, OMISSION OR DISCREPANCY NOTED ON OR BETWEEN DRAWINGS AND OTHER DOCUMENTS MUST BE REPORTED IN WRITING IMMEDIATELY. ALL MECHANICAL, ELECTRICAL AND STRUCTURAL LAYOUTS / COMPONENTS ARE INDICATIVE AND MUST BE DESIGNED AND CHECKED BY SPECIALISTS. DO NOT START WORK ON SITE BEFORE CONFIRMING THAT ALL NECESSARY STATUTORY AND OTHER CONSENTS HAVE BEEN OBTAINED. THIS DRAWING IS COPYRIGHT AND MUST NOT BE DISTRIBUTED WITHOUT PERMISSION. ELECTRONIC CAD FILES MUST NOT BE ALTERED OR COPIED.

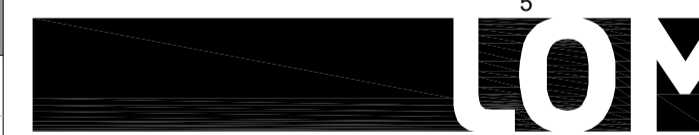
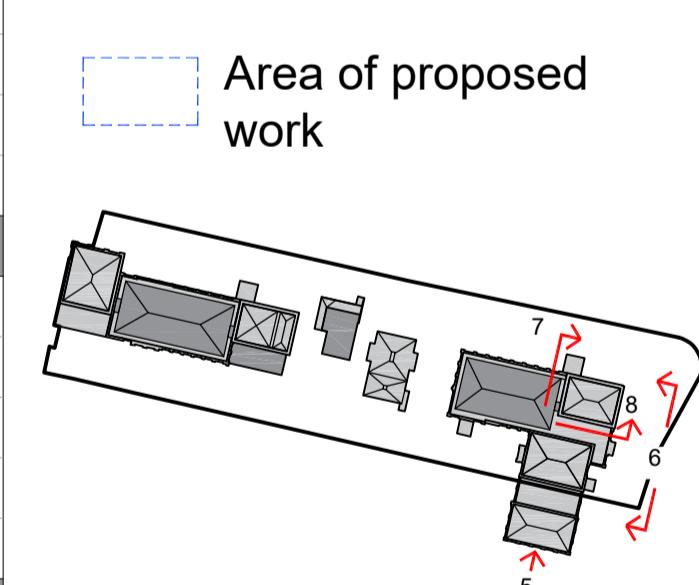
REVISIONS

REV	DATE	DESCRIPTION	INITIAL	CHECKED
-	02.09.2022	INITIAL ISSUE		OC JF
A	26.05.2023	HISTORIC ENGLAND FOR COMMENT		JF JF

NOTE:  
SURVEY INFORMATION BY M.J. REES AND COMPANY LTD, CHARTERED LAND SURVEYORS

REF.	CONDITION DESCRIPTION	REQUIRED ACTION
<b>BRICKWORK</b>		
B1	Discolouration & staining	Undertake cleaning of any brickwork with associated defects restored as required.
B2	Organic growth	Remove any plant growth within finish material and restore any associated damage/defects.
B3	Minor material failure	Re-pointing any areas of mortar failure.
B4	Extensive material failure	Substantial restoration works required such as replacing or repairing any decayed bricks and re-pointing.
B5	Incorrect material from historic works	Any areas of brickwork that varies from the predominant finish type should be re-finished or replaced if required.
<b>STONEMWORK/ RENDER/ PLASTER</b>		
S1	Discolouration & staining	Undertake cleaning of any stonework, render or plaster with associated defects restored as required.
S2	Organic growth	Remove any plant growth within finish material and restore any associated damage/defects.
S3	Minor material failure	Re-finish any discoloured areas of stonework.
S4	Defective render	Re-finish any cracked or failed render or plaster.
S5	Window sill material failure or damage	Repair or replace
<b>ROOFING</b>		
R1	Organic growth	Undertake cleaning and removal of any organic growth on or around any roof areas
R2	Minor material failure	Re-finish any discoloured areas of roofing
R3	Extensive material failure	Substantial restoration works required such as replacing or repairing any broken tiling or roof membranes.
<b>METALWORK</b>		
M1	Defective rainwater goods	Replace rainwater goods with new or restore if defect is only minimal such as organic growth blockages.
M2	Flashing failure	Replace rainwater goods with new or restore if defect is only minimal.
M3	Discoloured signs or features	Undertake restoration works of any existing features or signage to be retained.
M4	Pipe work removal	Removal of any defunct or unnecessary pipe work and make good.
<b>EXTERNAL WORKS</b>		
E1	Repair external features	Repair existing external features as per proposal.
E2	Remove external lighting	Removal of existing external features as per proposal.

IN PROGRESS



client  
**WATERFALL PLANNING LTD**

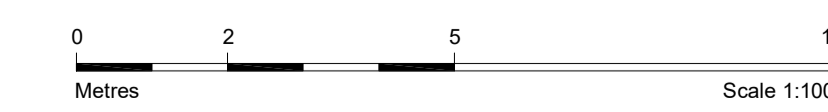
project  
**HAMPTON WATERWORKS**

drawing title  
**FABRIC CONDITION DRAWING - RUSTON & WARD ELEVATIONS 5, 6, 7 & 8**

sheet size scale  
**A1 1:100 @ A1**

status  
**PRELIMINARY**

drawing no. revision  
**1685-A-P058 A**



**LOM architecture and design**  
The Glass House 5 Sclater Street London E1 6JY UK  
Phone +44(0)20 8444 2999 Email mail@lom-fdp.com  
Web www.lom-architecture.com