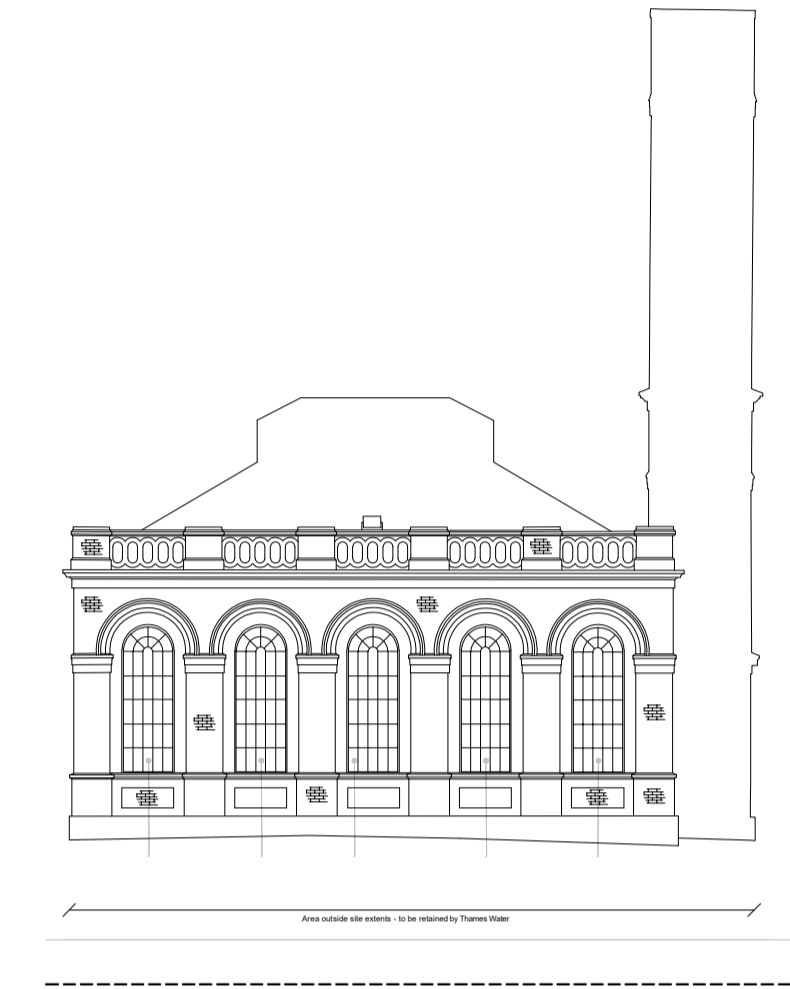
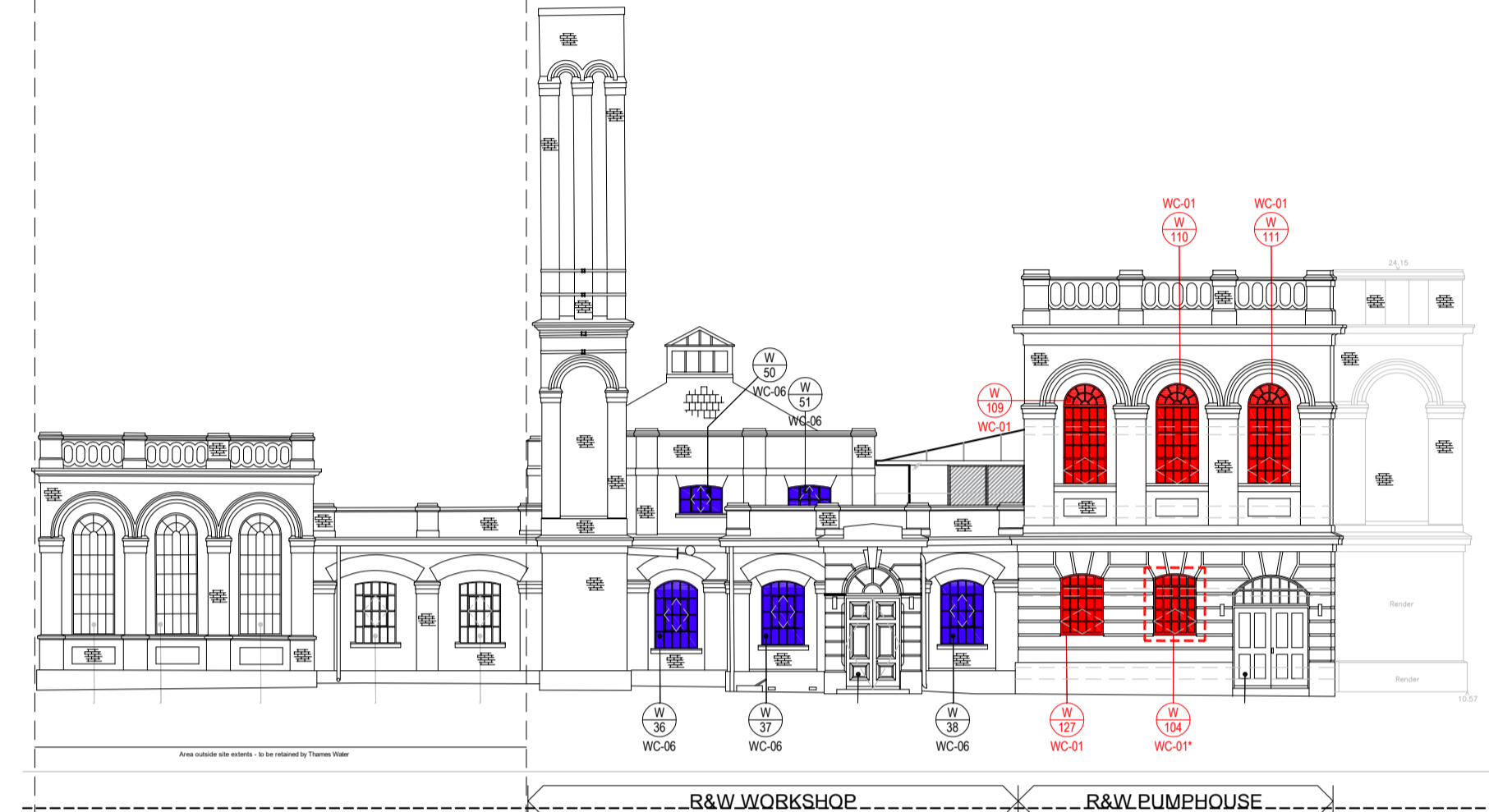


SCALE 1:200
RUSTON & WARD
ELEVATION 1 - PROPOSED

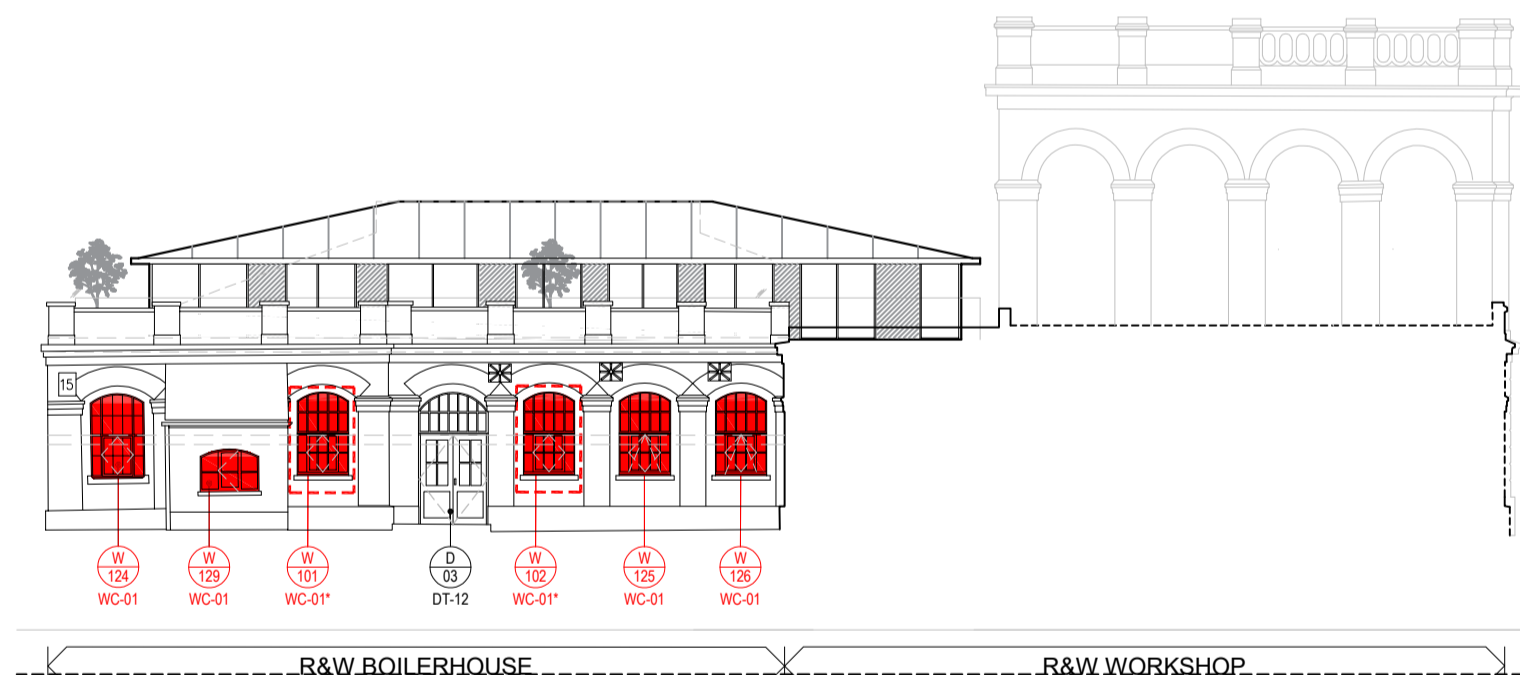
SCALE 1:200
RUSTON & WARD
ELEVATION 2 - PROPOSED



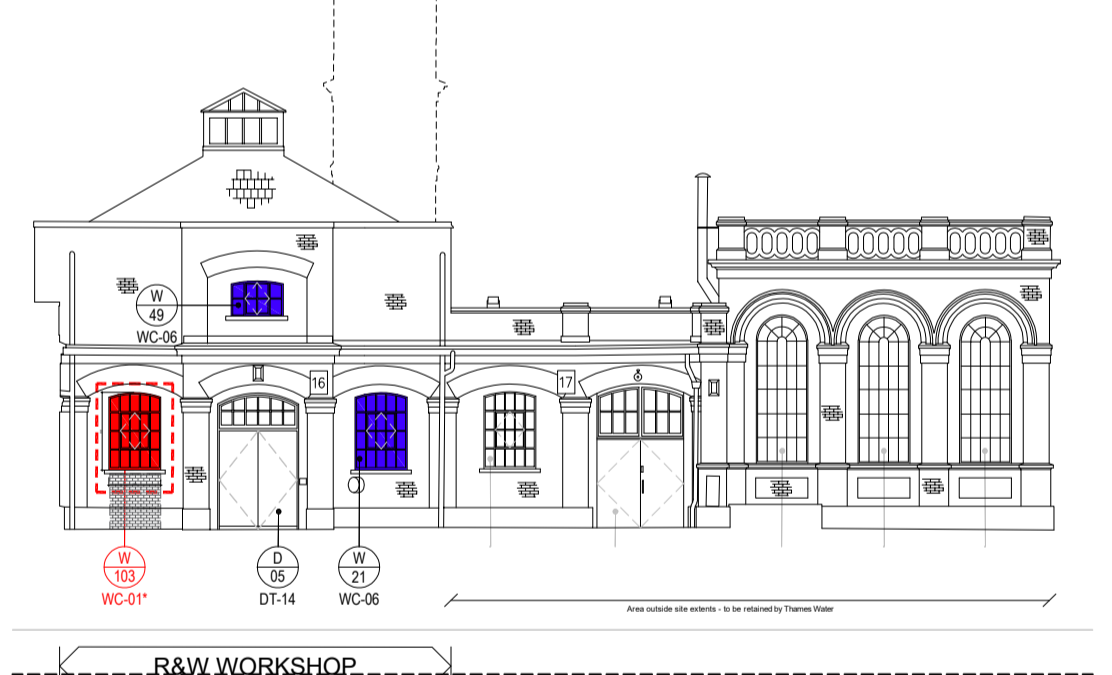
SCALE 1:200
RUSTON & WARD
ELEVATION 5 - PROPOSED



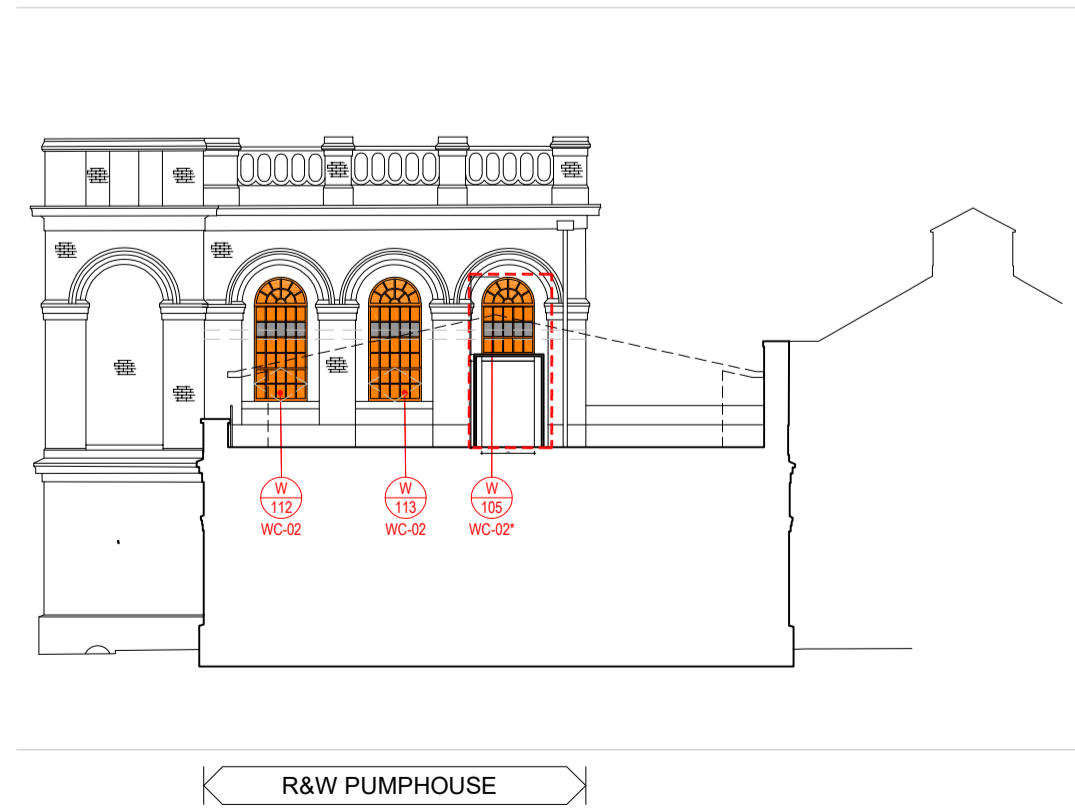
SCALE 1:200
RUSTON & WARD
ELEVATION 6 - PROPOSED



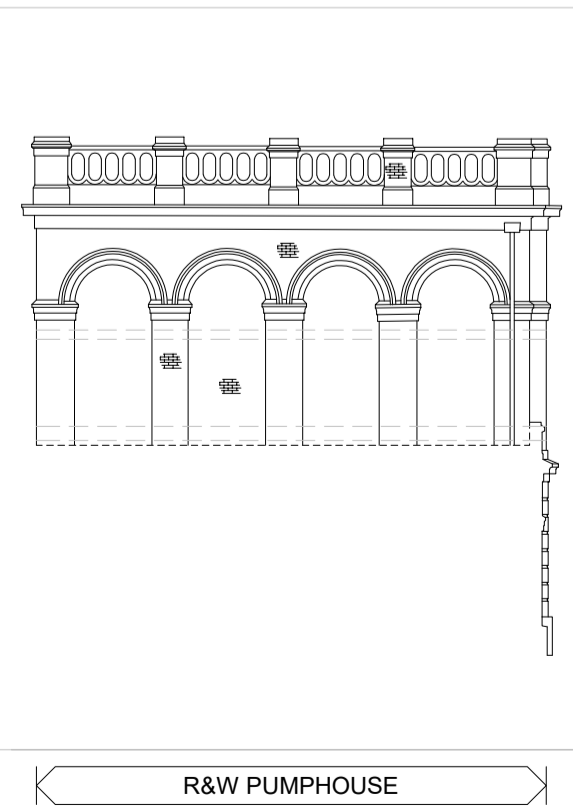
SCALE 1:200
RUSTON & WARD
ELEVATION 3 - PROPOSED



SCALE 1:200
RUSTON & WARD
ELEVATION 4 - PROPOSED

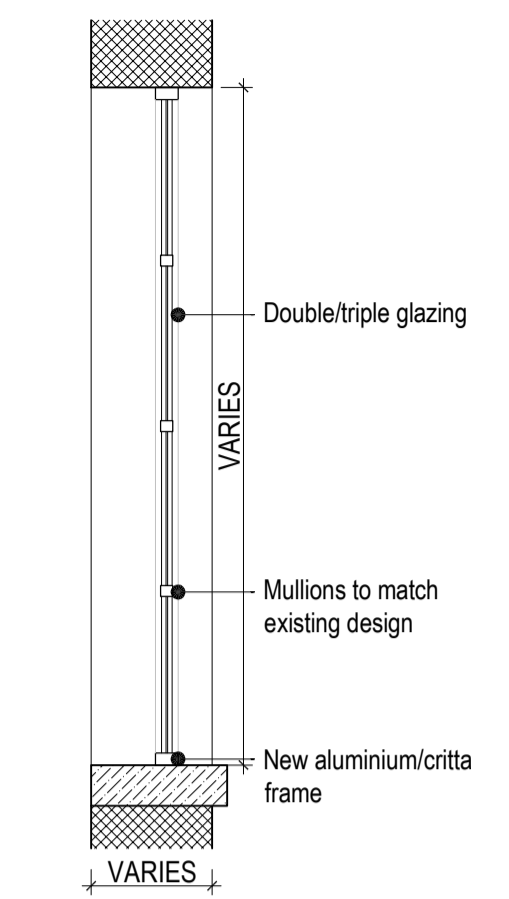


SCALE 1:200
RUSTON & WARD
ELEVATION 7 - PROPOSED

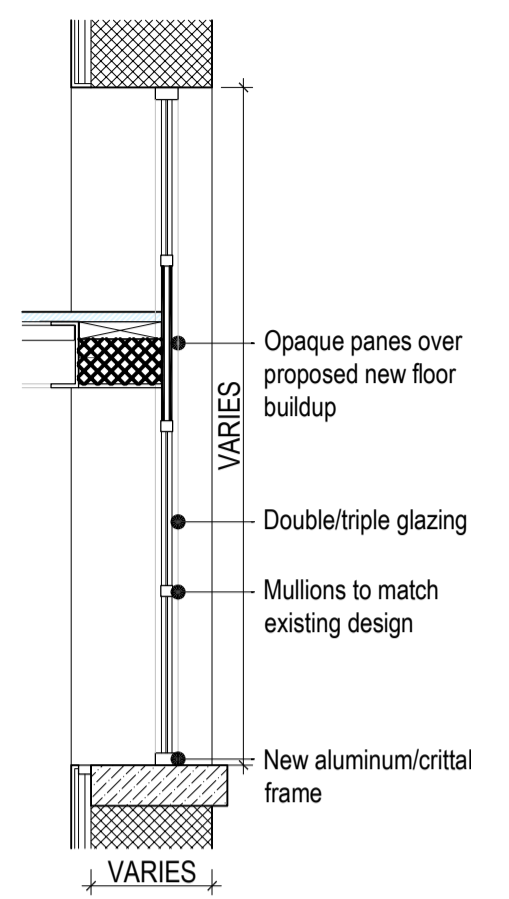


SCALE 1:200
RUSTON & WARD
ELEVATION 8 - PROPOSED

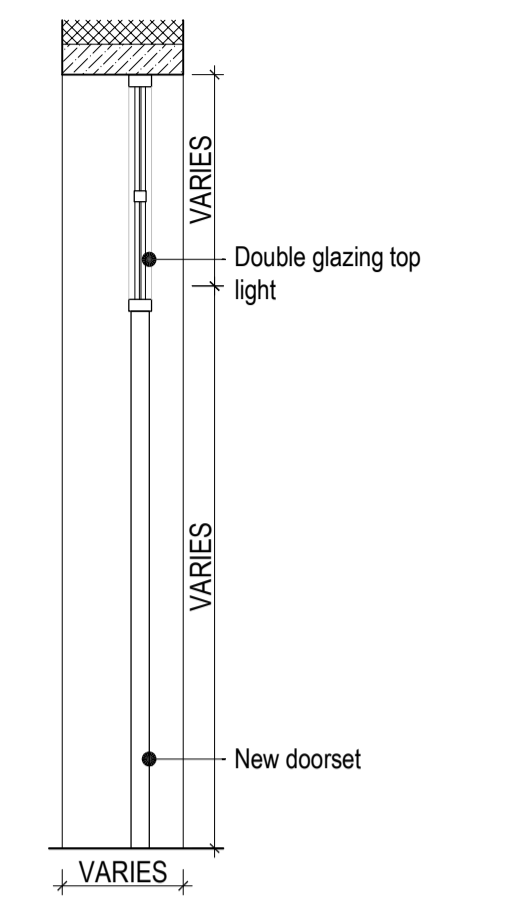
PROPOSED WINDOW AND DOOR TYPES



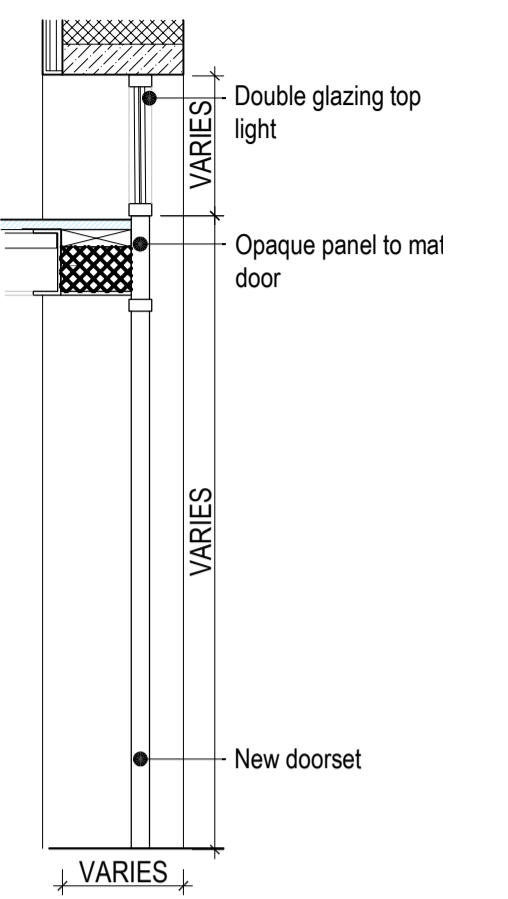
SCALE 1:25
CONDITION TYPE 01
NEW - 21 Instances



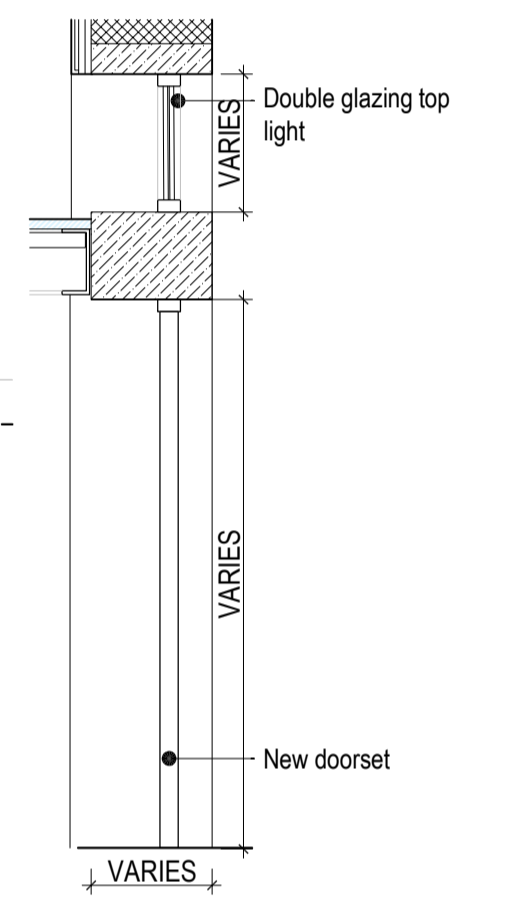
SCALE 1:25
CONDITION TYPE 02
NEW - 9 Instances



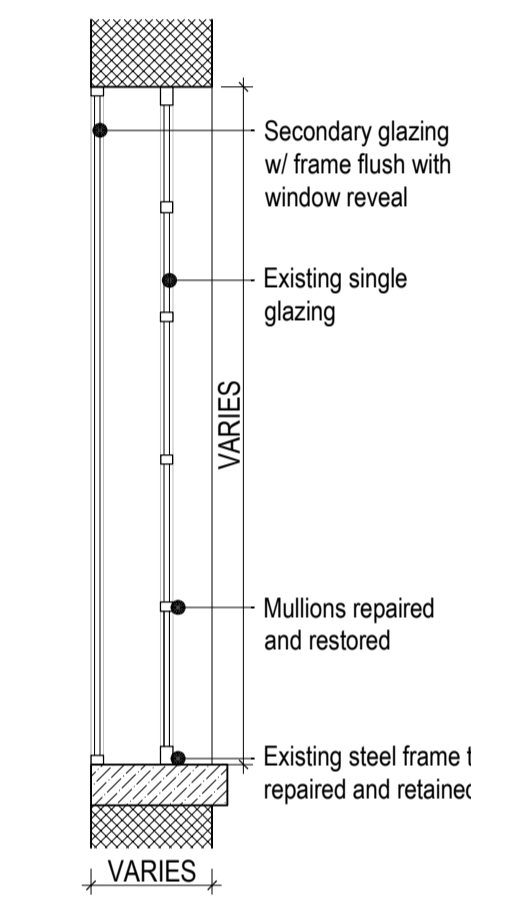
SCALE 1:25
CONDITION TYPE 03
NEW - 3 Instances



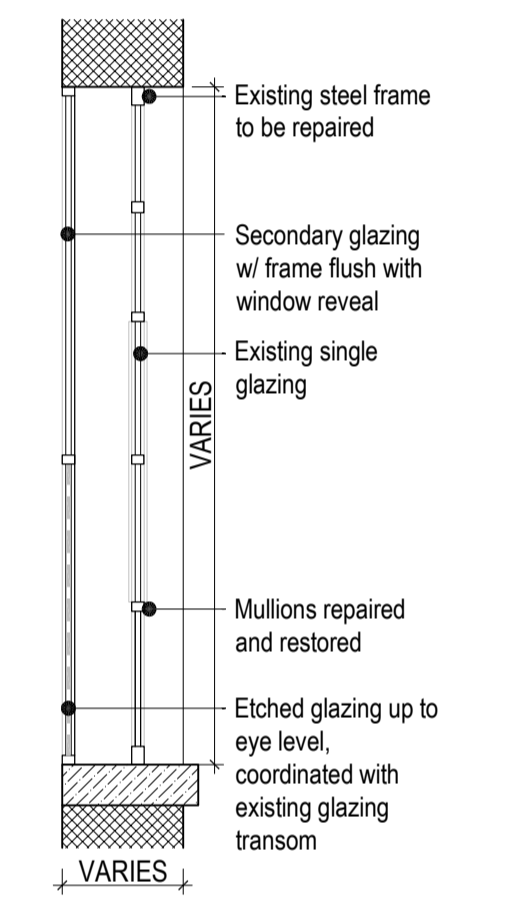
SCALE 1:25
CONDITION TYPE 04
NEW - 0 Instances



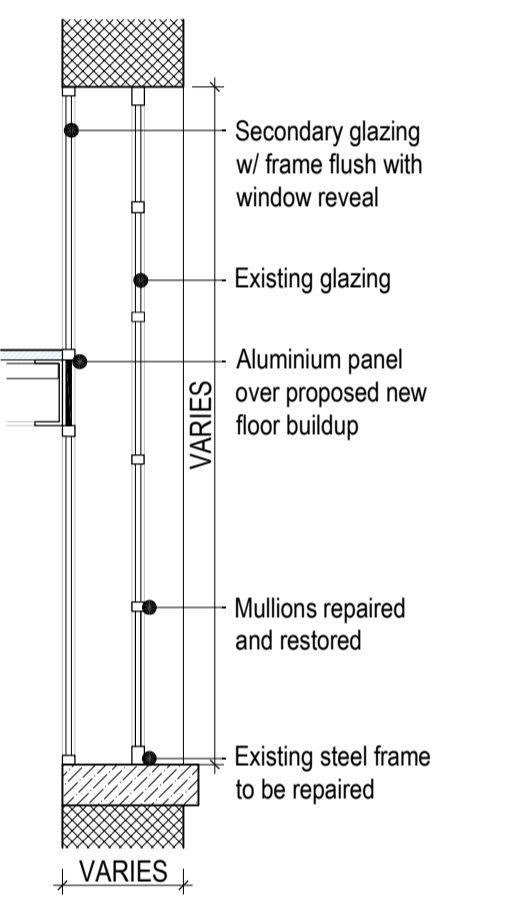
SCALE 1:25
CONDITION TYPE 05
NEW - 0 Instances



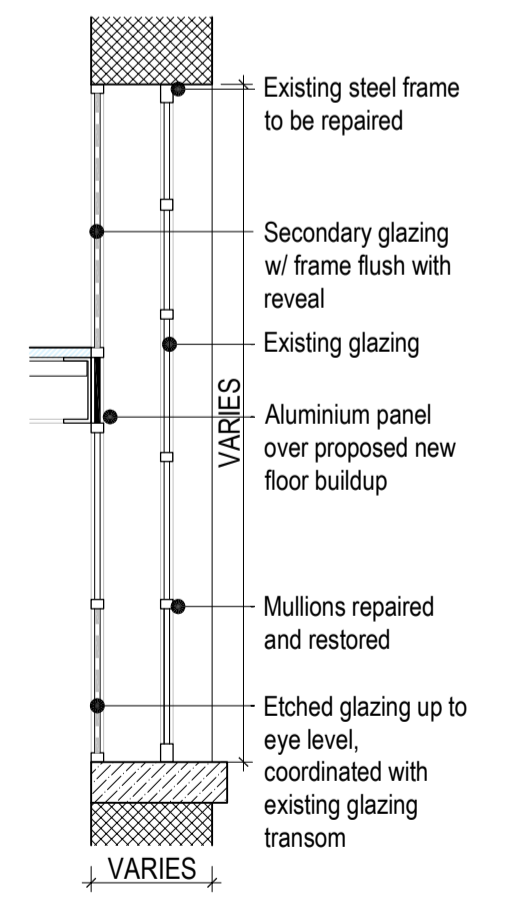
SCALE 1:25
CONDITION TYPE 06
RETAINED - 7 Instances



SCALE 1:25
CONDITION TYPE 07
RETAINED - 0 Instances



SCALE 1:25
CONDITION TYPE 08
RETAINED - 0 Instances



SCALE 1:25
CONDITION TYPE 09
RETAINED - 0 Instances

USE OF DRAWINGS
DO NOT SCALE FROM THIS DRAWING. USE WRITTEN DIMENSIONS AND CHECK ON SITE. THIS DRAWING IS BASED ON SITE INFORMATION SUPPLIED BY THIRD PARTIES AND ACCURACY OF EXISTING FEATURES IS NOT GUARANTEED. ANY ERROR, OMISSION OR DISCREPANCY NOTED ON OR BETWEEN DRAWINGS AND OTHER DOCUMENTS MUST BE REPORTED IN WRITING IMMEDIATELY. ALL MECHANICAL, ELECTRICAL AND STRUCTURAL LAYOUTS / COMPONENTS ARE INDICATIVE AND MUST BE DESIGNED AND CHECKED BY SPECIALISTS. DO NOT START WORK ON SITE BEFORE CONFIRMING THAT ALL NECESSARY STATUTORY AND OTHER CONSENTS HAVE BEEN OBTAINED. THIS DRAWING IS COPYRIGHT AND MUST NOT BE DISTRIBUTED WITHOUT PERMISSION. ELECTRONIC CAD FILES MUST NOT BE ALTERED OR COPIED.

REVISIONS

REV	DATE	DESCRIPTION	CHECKED
-	02.09.2022	INITIAL ISSUE	CA JF
A	06.10.2022	GENERAL UPDATE	LW JF
B	26.05.2023	HISTORIC ENGLAND FOR COMMENT	JF JF

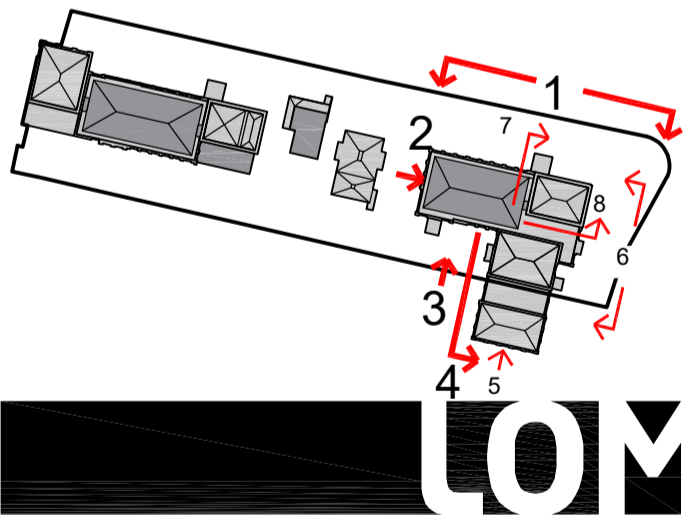
NOTE:
SURVEY INFORMATION BY M.J. REES AND COMPANY LTD, CHARTERED LAND SURVEYORS

WINDOW / DOOR CONDITION TYPE LEGEND

CODE REF.	DESCRIPTION
01	Replaced with new double glazed aluminium/crittall window
02	Replaced with double glazed window with additional secondary glazing required including aluminium panel to cover mezzanine level
03	New door with double glazed top light
04	New door with panel above and double glazed top light
05	New door with separate double glazed top light
06	Original window to be repaired with additional internal secondary glazing required to window reveal
07	Original window to be repaired with additional internal secondary glazing required to window reveal including etched glazing
08	Original window to be repaired with additional internal secondary glazing required to window reveal including aluminium panel to cover mezzanine level
09	Original window to be repaired with additional internal secondary glazing required to window reveal including aluminium panel to cover mezzanine level and etched glazing

* = New intervention window / door

IN PROGRESS



client
WATERFALL PLANNING LTD

project
HAMPTON WATERWORKS

drawing title
PROPOSED DOOR/WINDOW CONDITION TYPES - RUSTON & WARD EXT. FABRIC

sheet size scale
A1 1:200 & 1:25 @ A1

status
PRELIMINARY

drawing no. revision
1685-A-P061 B

LOM architecture and design
The Glass House 5 Sclater Street London E1 6JY UK
Phone +44(0)20 8444 2999 Email mail@lom-arp.com
Web www.lom-architecture.com

