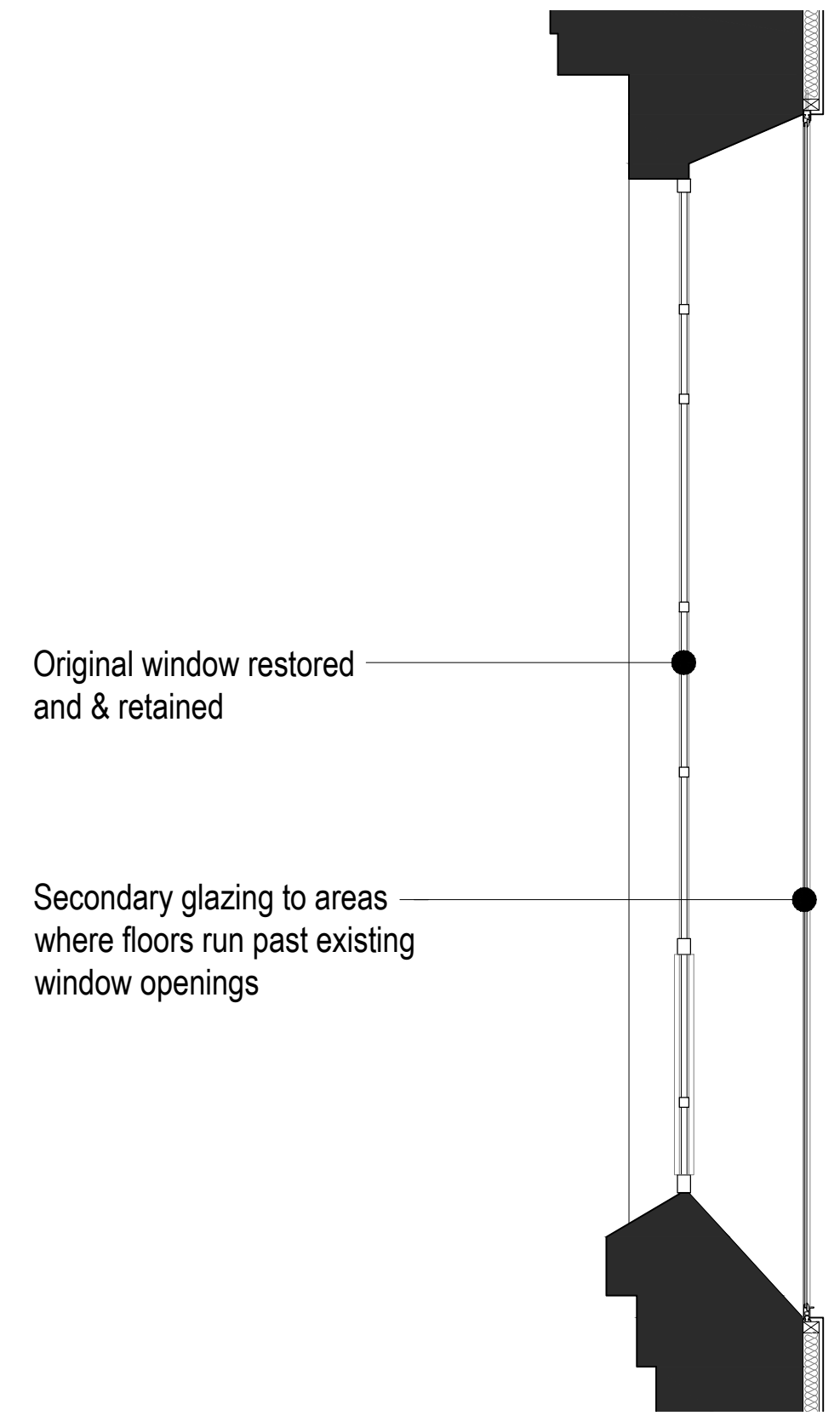


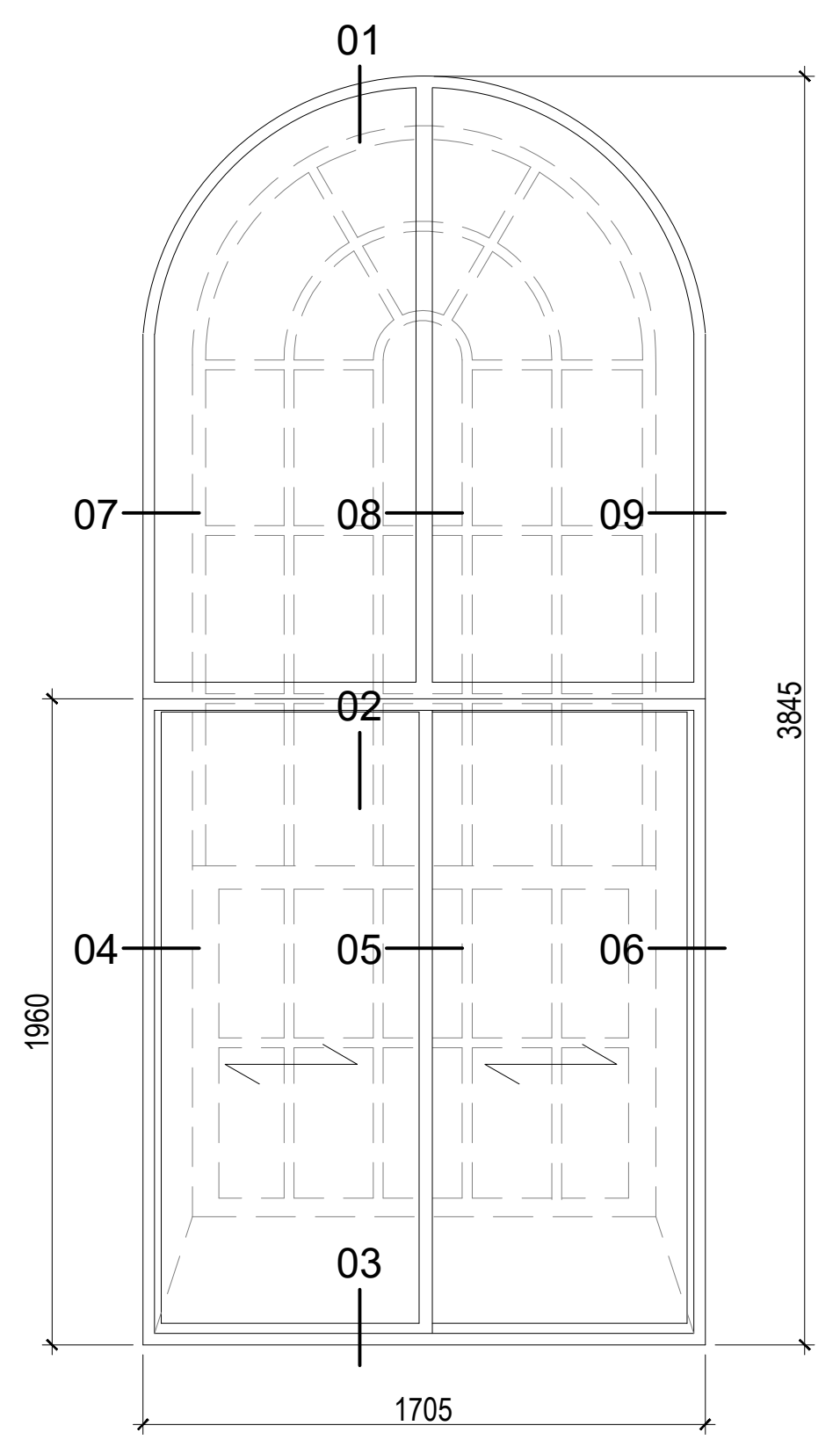
USE OF DRAWINGS
 DO NOT SCALE FROM THIS DRAWING. USE WRITTEN DIMENSIONS AND CHECK ON SITE. THIS DRAWING IS BASED ON SITE INFORMATION SUPPLIED BY THIRD PARTIES AND ACCURACY OF EXISTING FEATURES IS NOT GUARANTEED. ANY ERROR, OMISSION OR DISCREPANCY NOTED ON OR BETWEEN DRAWINGS AND OTHER DOCUMENTS MUST BE REPORTED IN WRITING IMMEDIATELY. ALL MECHANICAL, ELECTRICAL AND STRUCTURAL LAYOUTS / COMPONENTS ARE INDICATIVE AND MUST BE DESIGNED AND CHECKED BY SPECIALISTS. DO NOT START WORK ON SITE BEFORE CONFIRMING THAT ALL NECESSARY STATUTORY AND OTHER CONSENTS HAVE BEEN OBTAINED. THIS DRAWING IS COPYRIGHT AND MUST NOT BE DISTRIBUTED WITHOUT PERMISSION. ELECTRONIC CAD FILES MUST NOT BE ALTERED OR COPIED.

REVISIONS

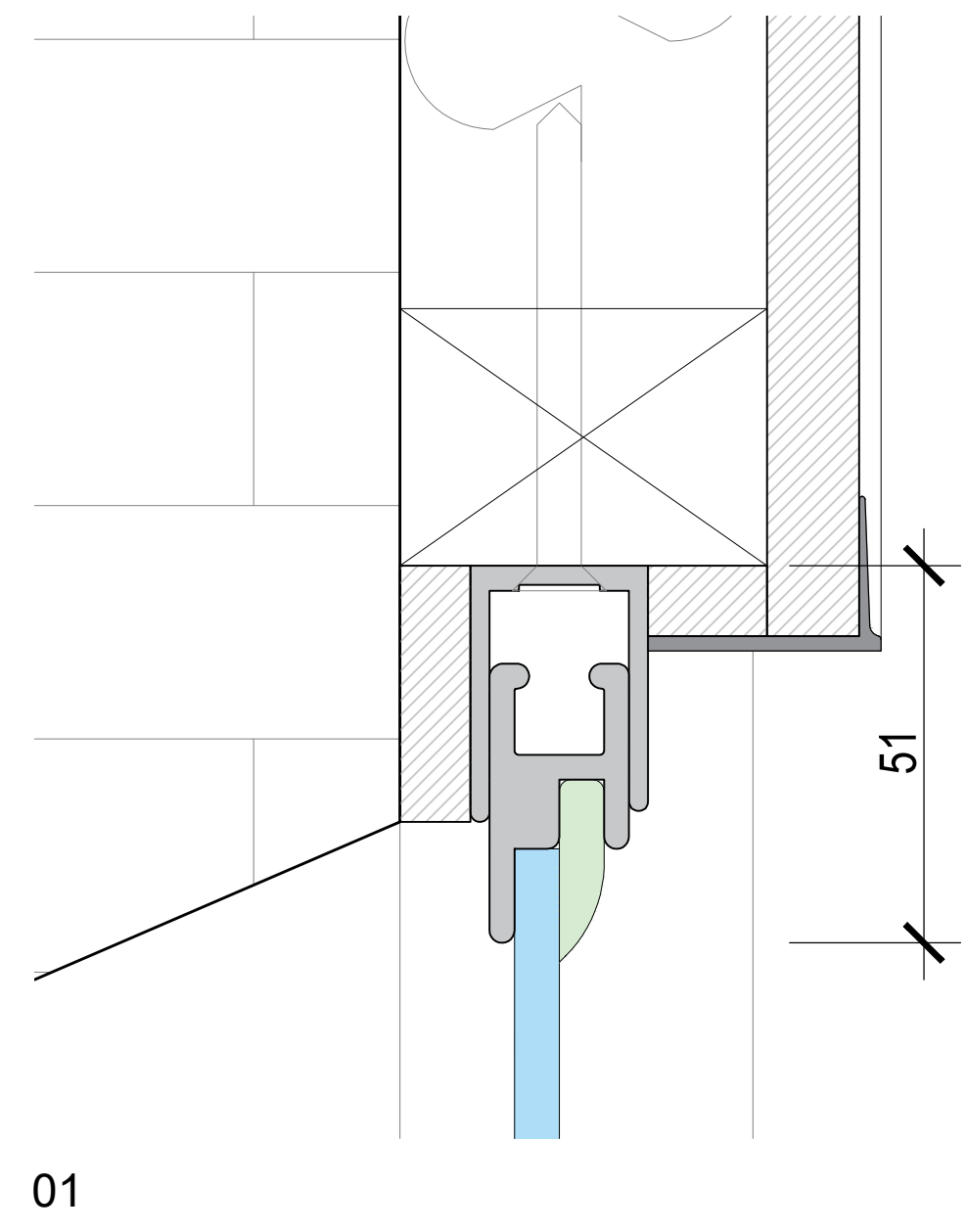
REV	DATE	DESCRIPTION	CHECKED DRAWN
-	16.12.2022	INITIAL ISSUE	LW JF



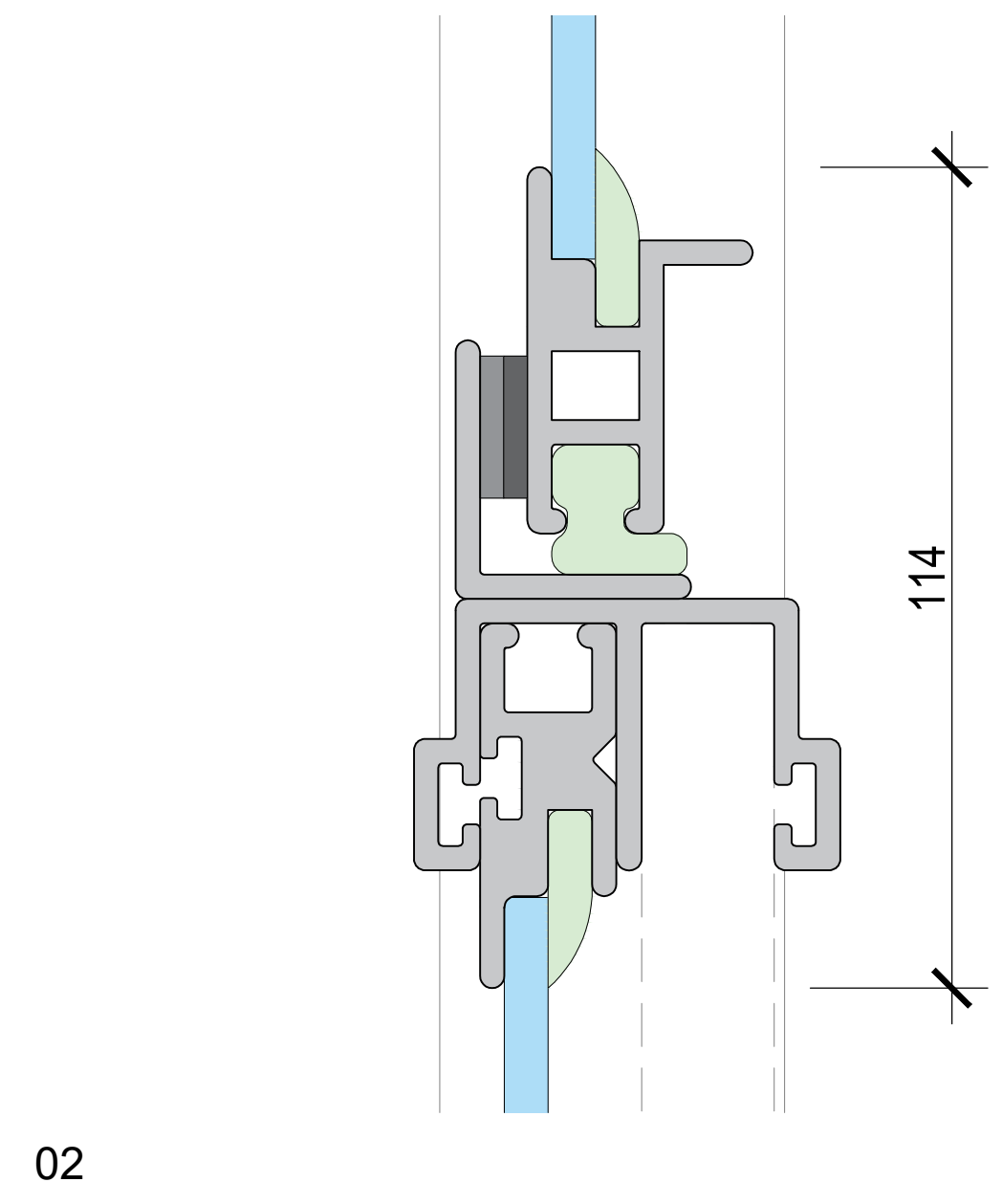
PROPOSED EAST PUMPHOUSE - WINDOW CONDITION TYPE 06 1B



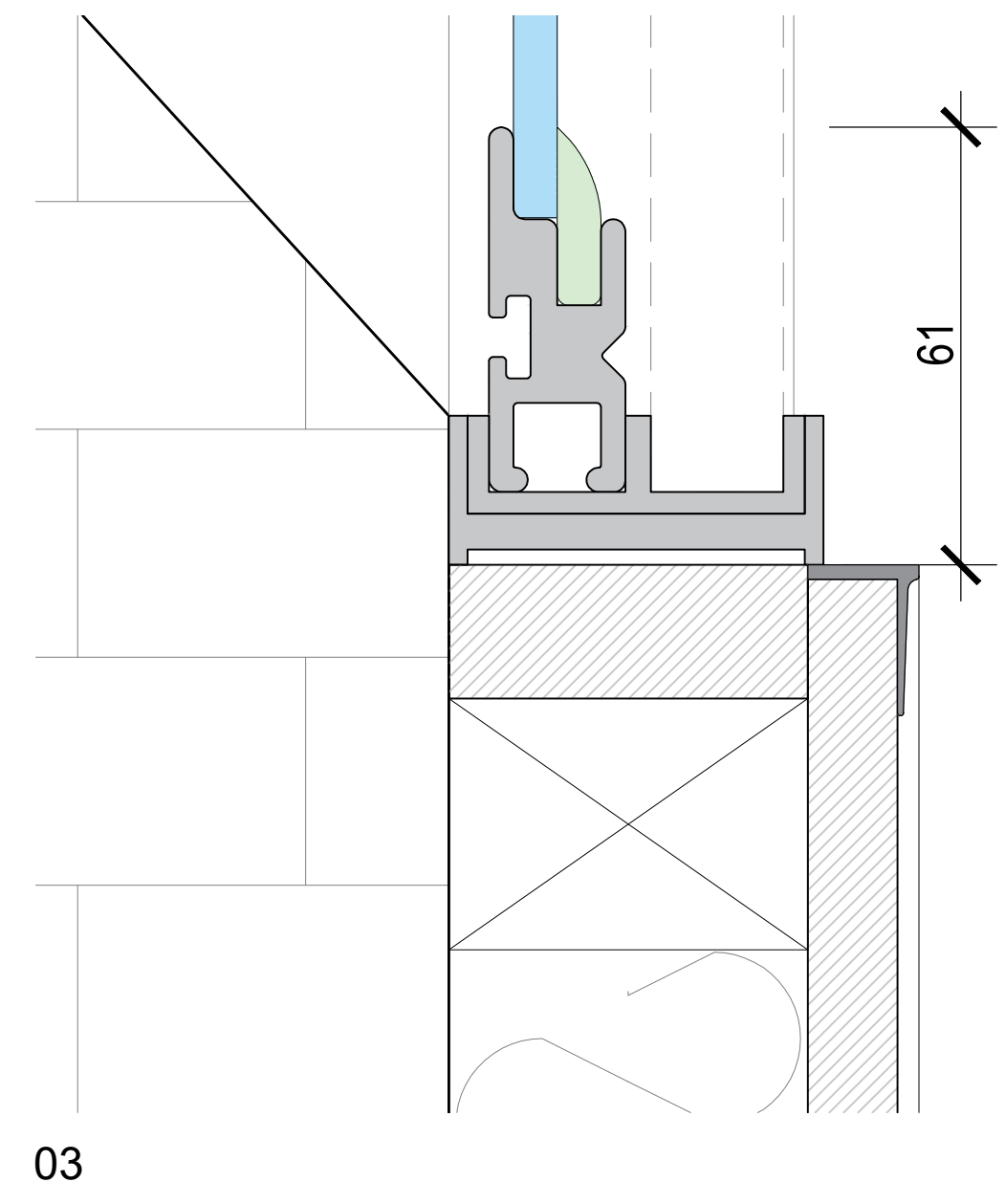
PROPOSED SECONDARY GLAZING OF TYPE 06 1B



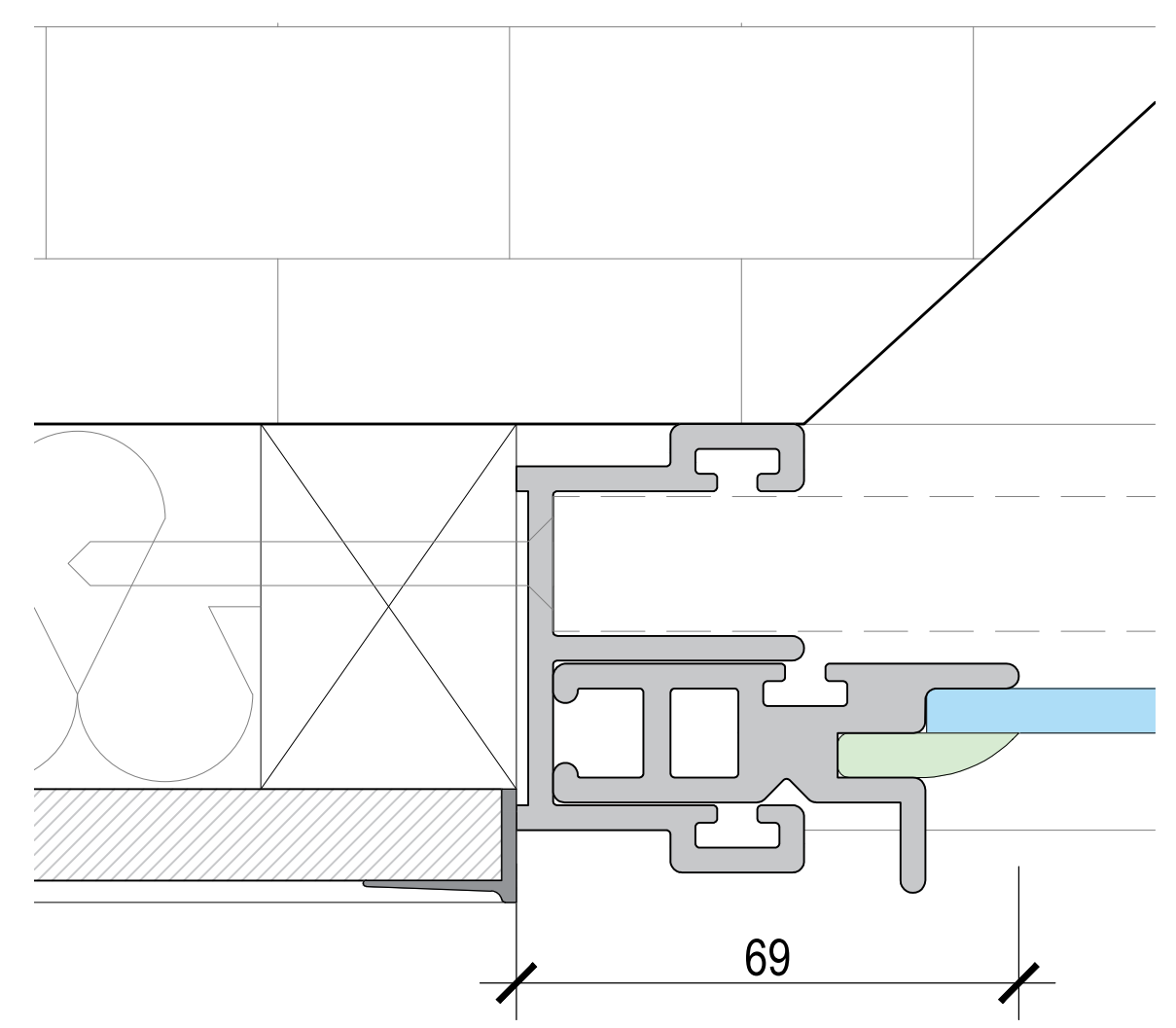
01



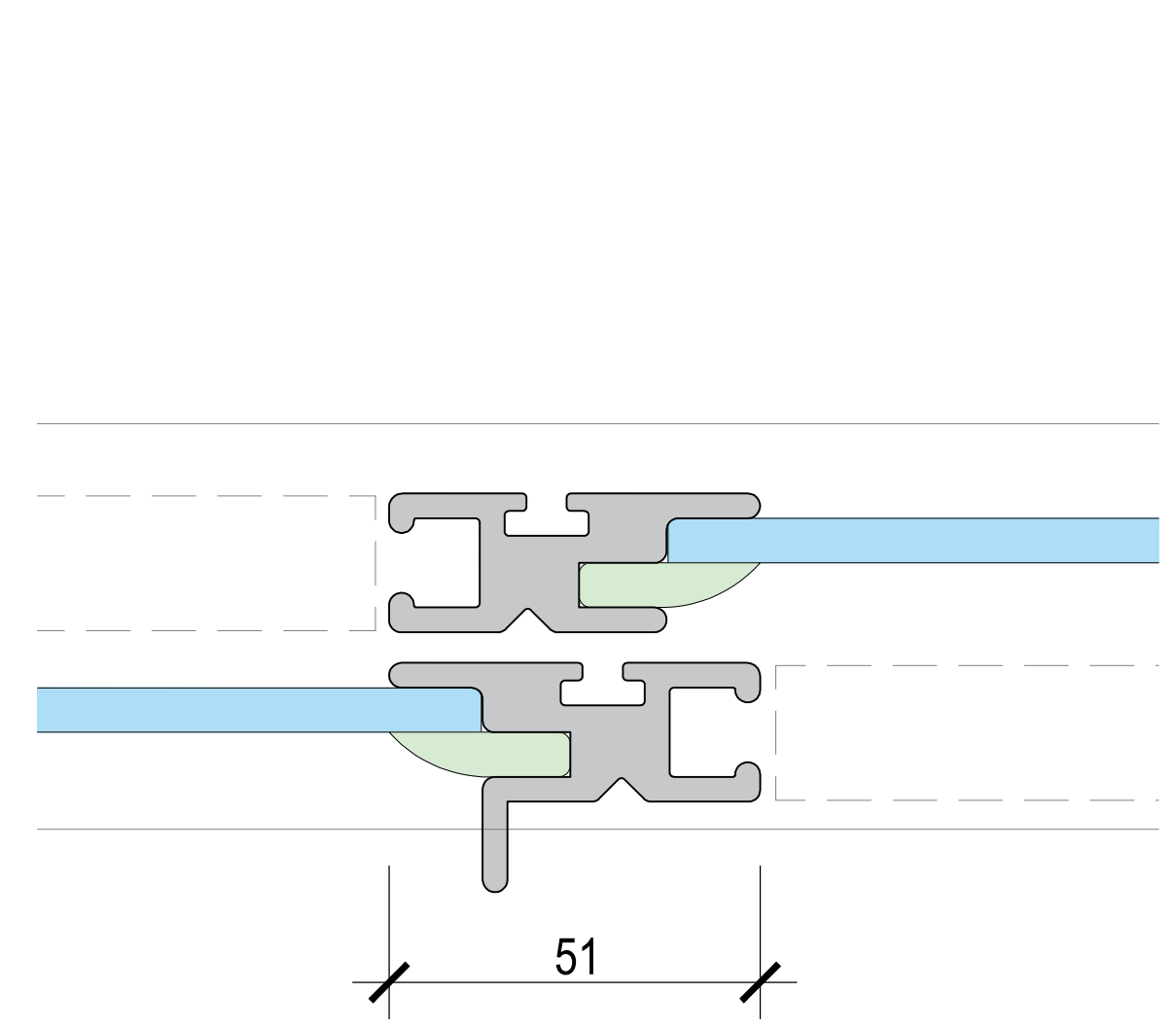
02



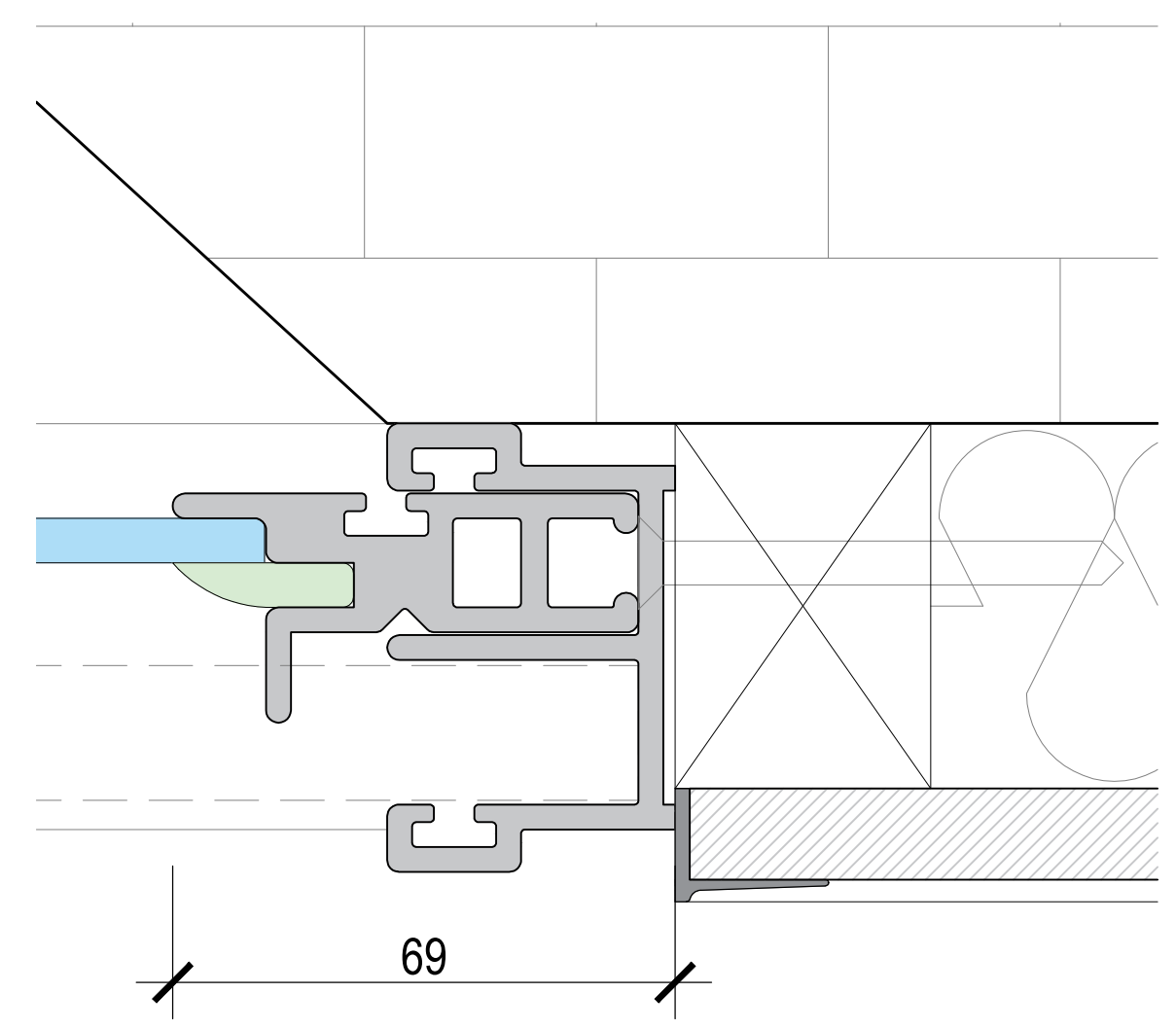
03



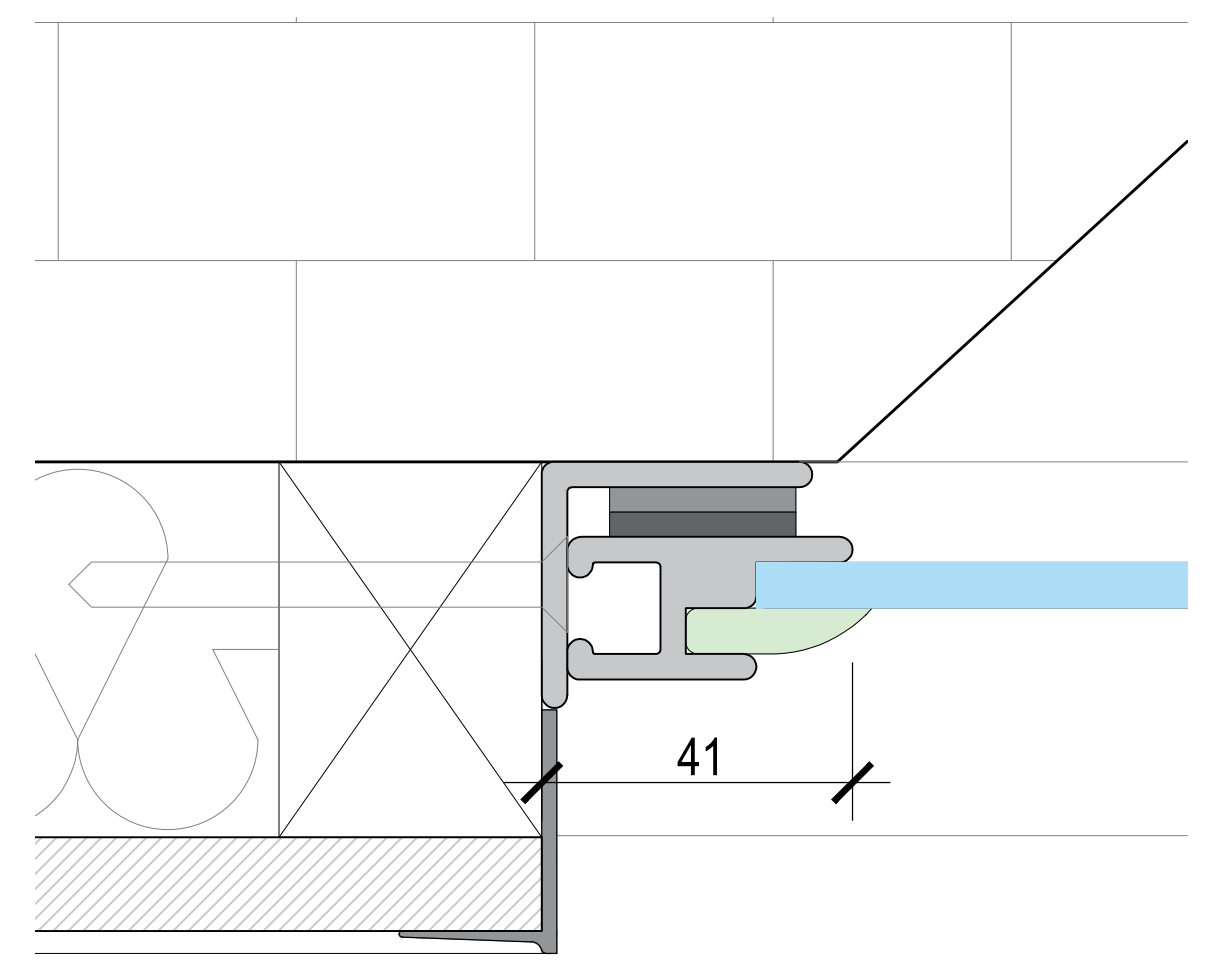
04



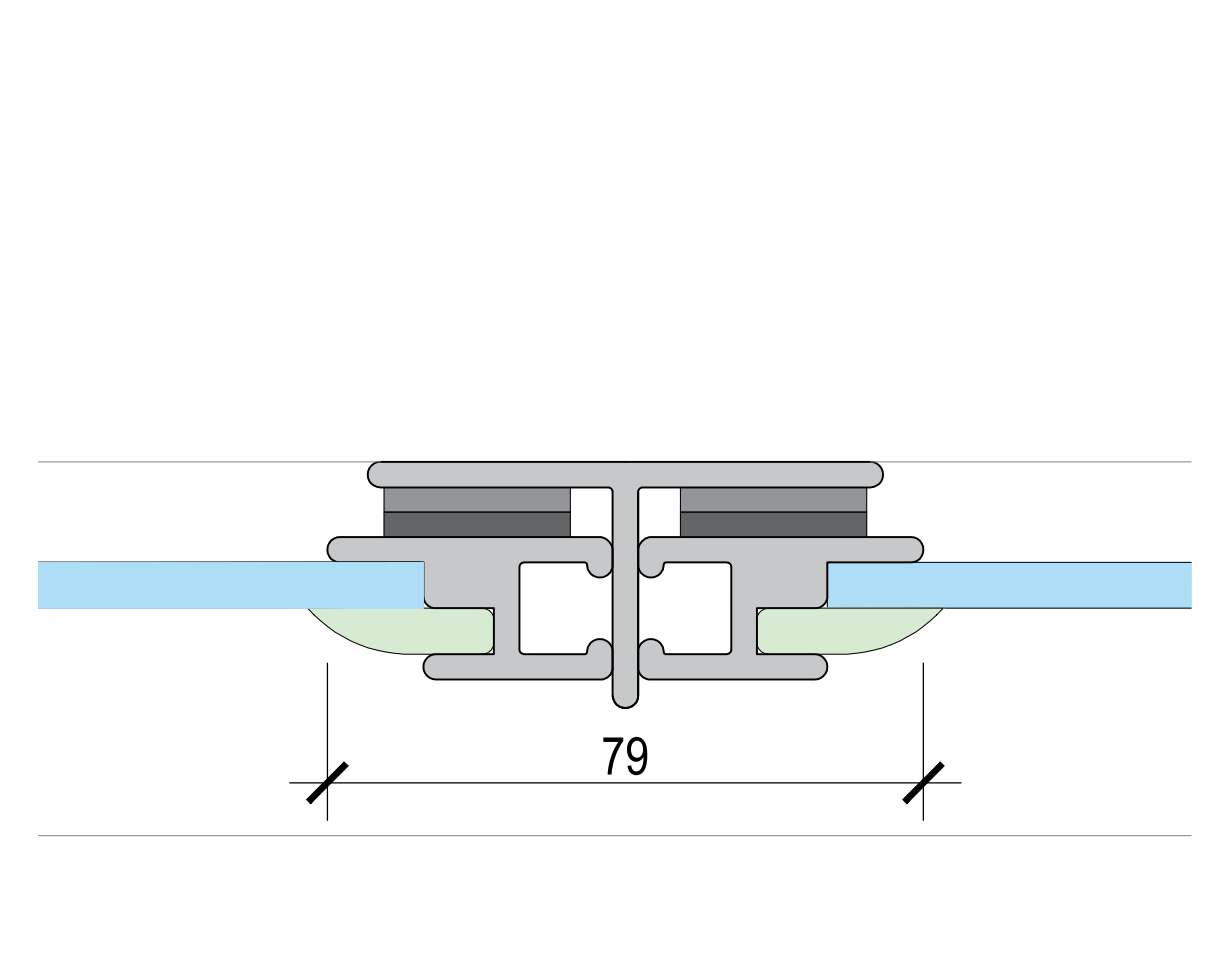
05



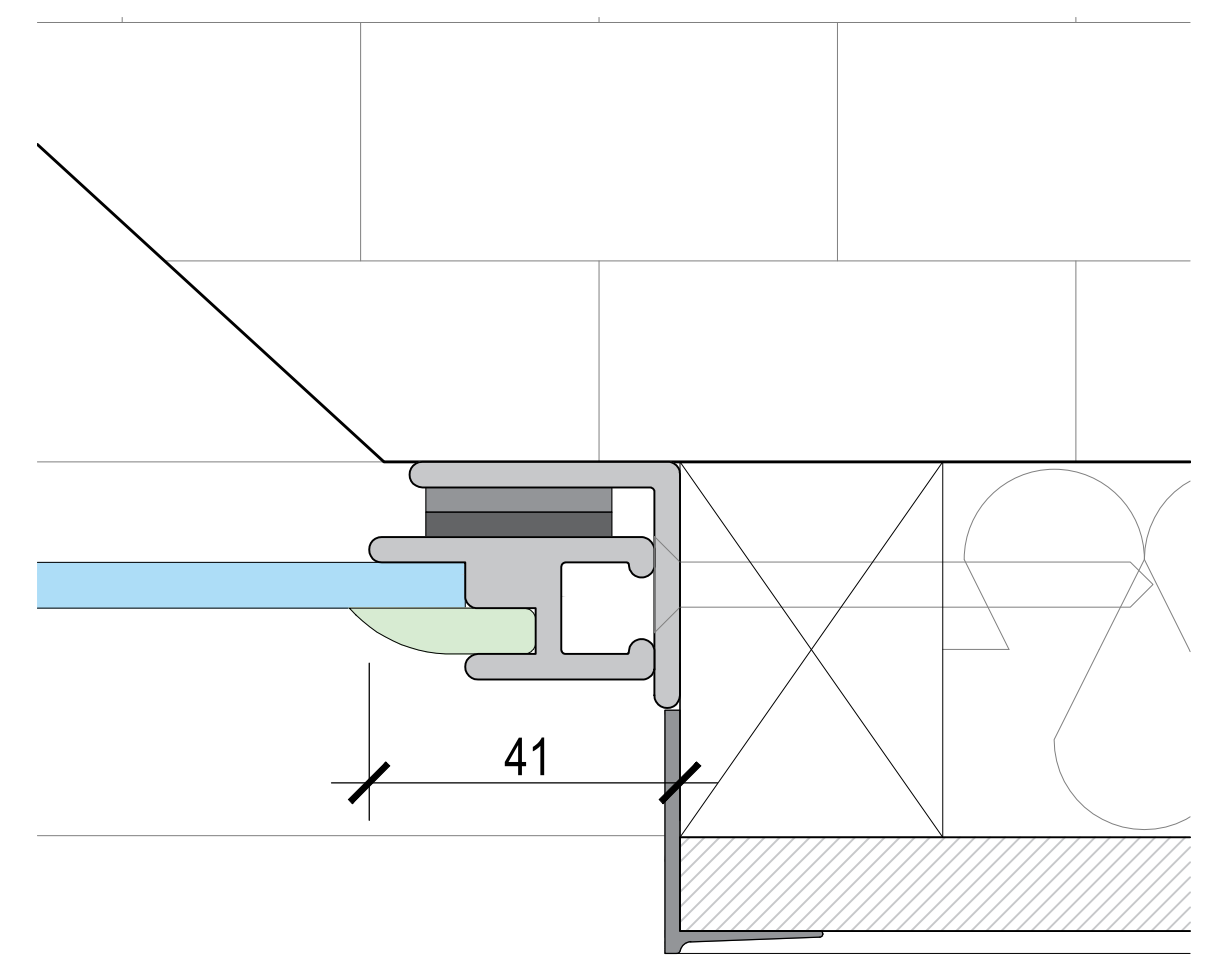
06



07

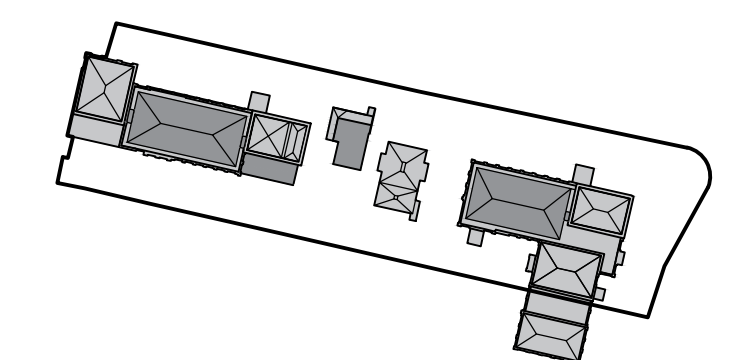


08



09

IN PROGRESS



client
**WATERFALL
 PLANNING LTD**

project
HAMPTON WATERWORKS

drawing title
**PROPOSED SECONDARY
 GLAZING DETAILS TYPE 06 1B**

sheet size scale
A1 1:1 @ A1

status
PRELIMINARY

drawing no. revision
1685-A-P063 -

LOM architecture and design
 The Glass House 5 Sclater Street London E1 6JY UK
 Phone +44(0)20 8444 2999 Email mail@lom-fdp.com
 Web www.lom-architecture.com