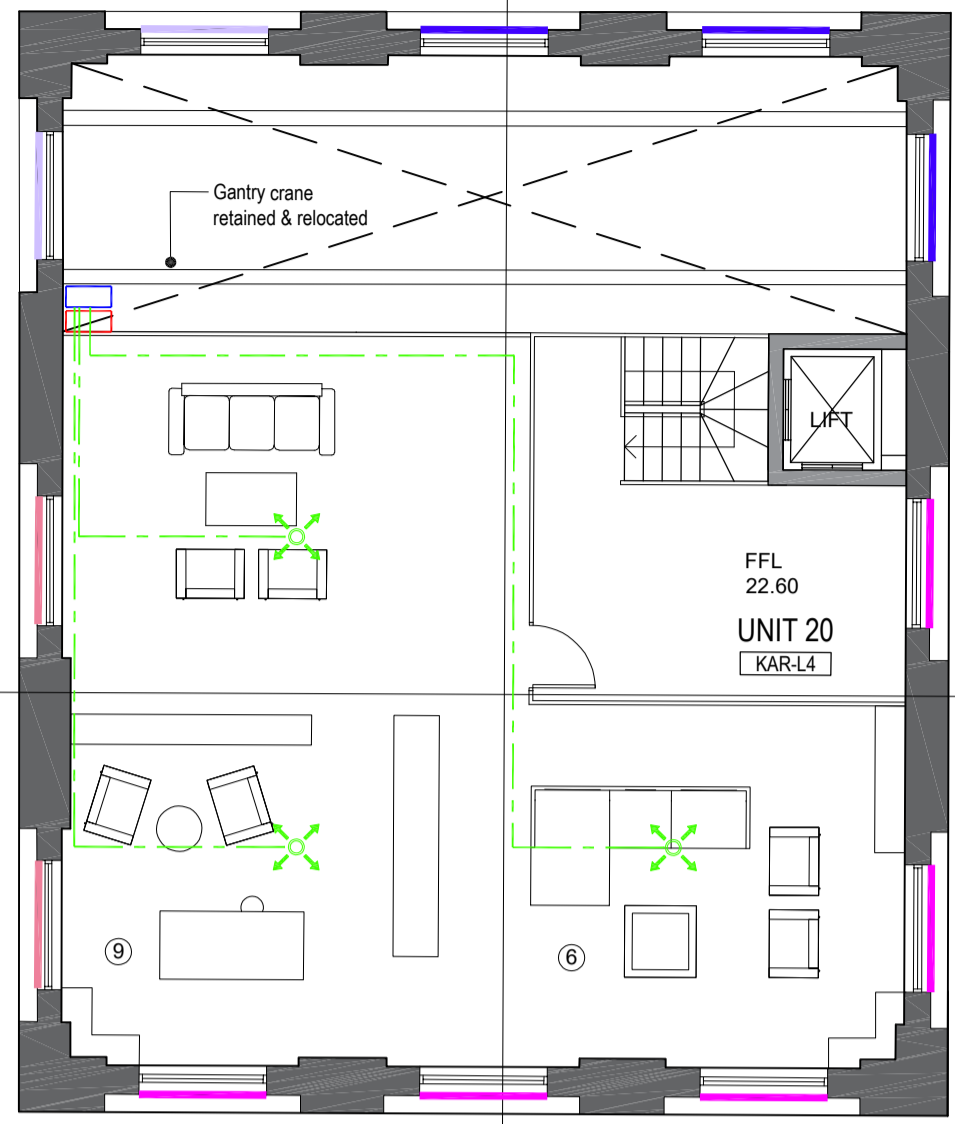
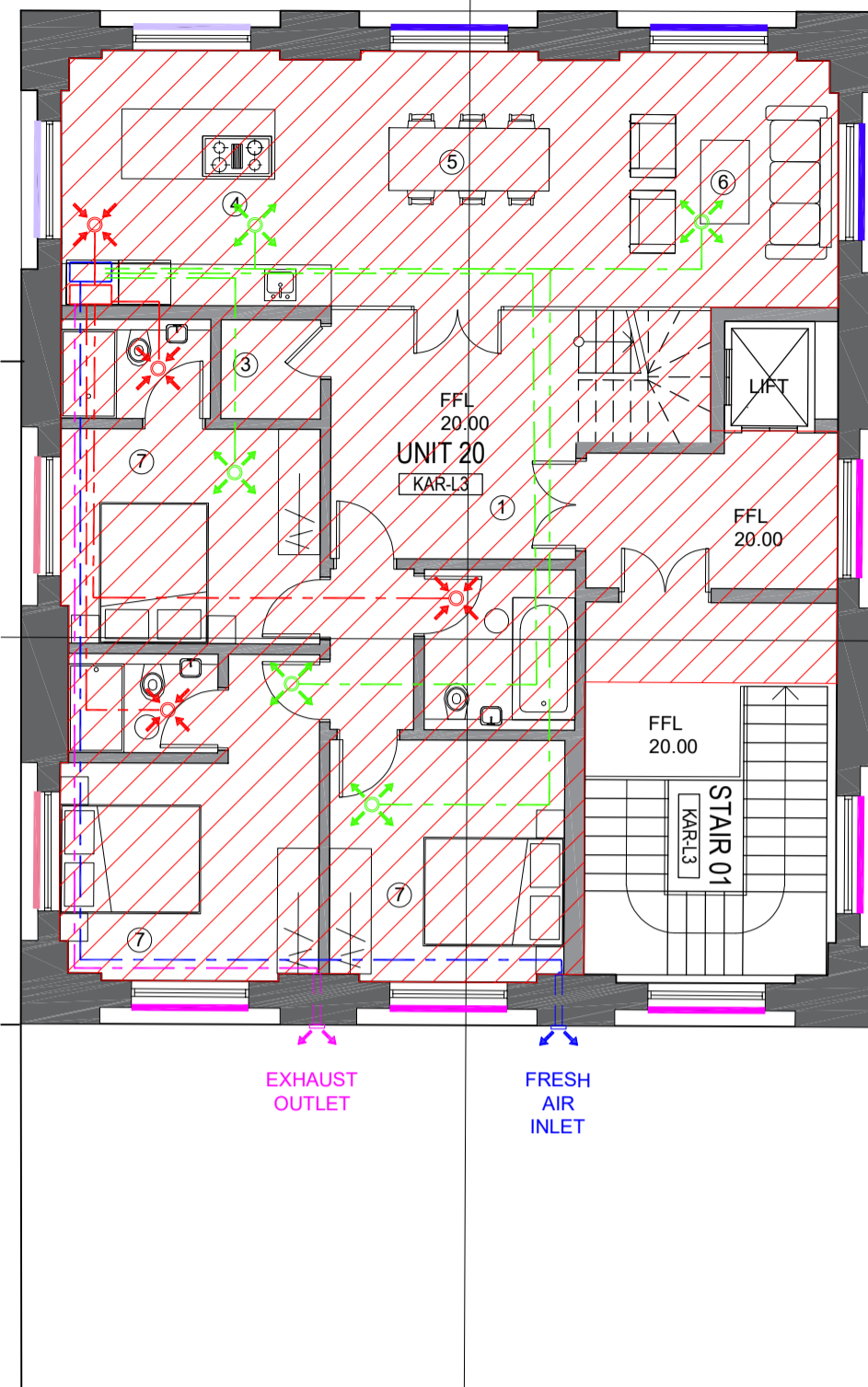


KARSLAKE WEST PUMPHOUSE



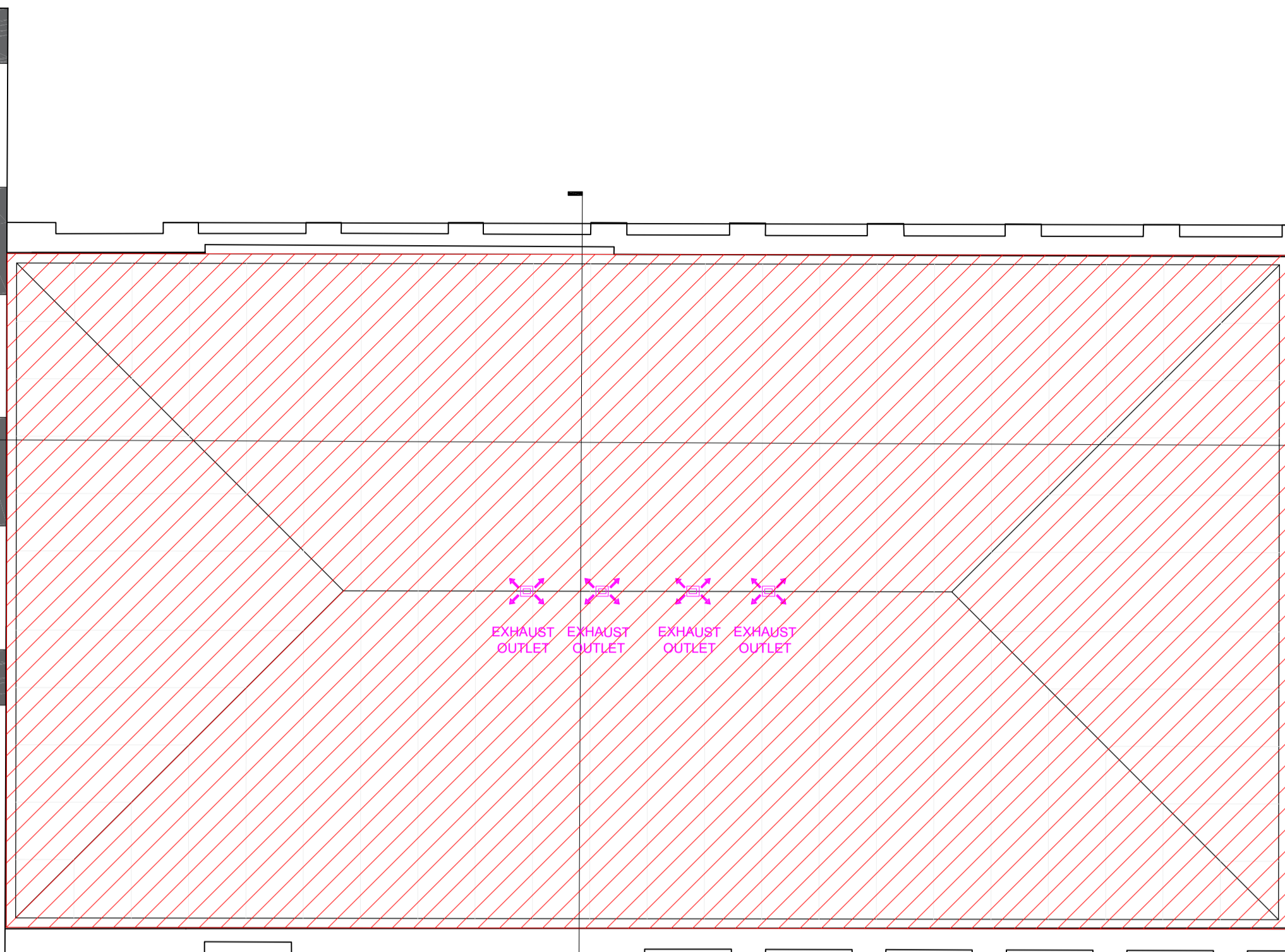
SCALE 1:100
KARSLAKE - Level 4 FLOOR PLAN

KARSLAKE WEST PUMPHOUSE

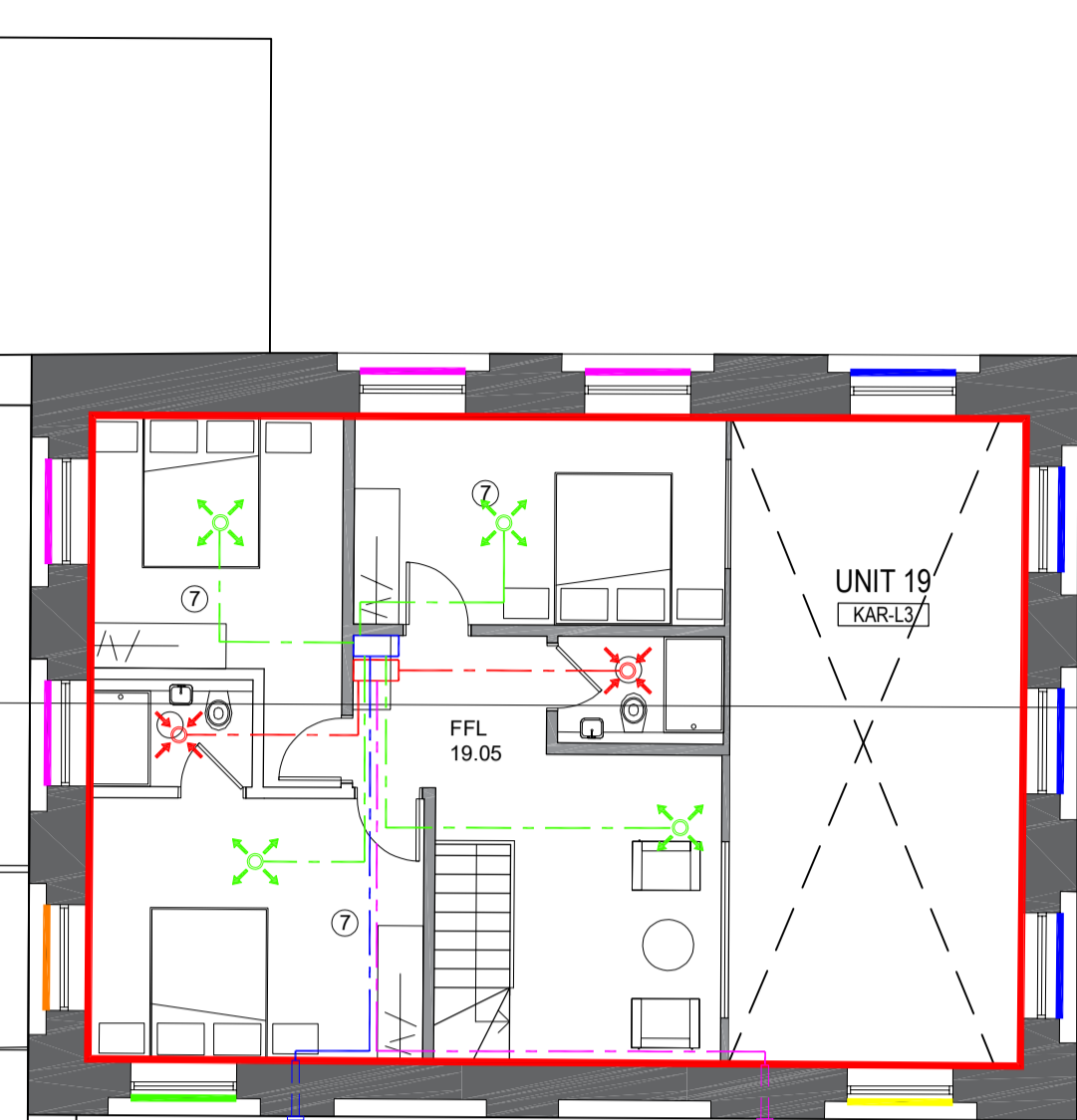


SCALE 1:100
KARSLAKE - Level 3 FLOOR PLAN

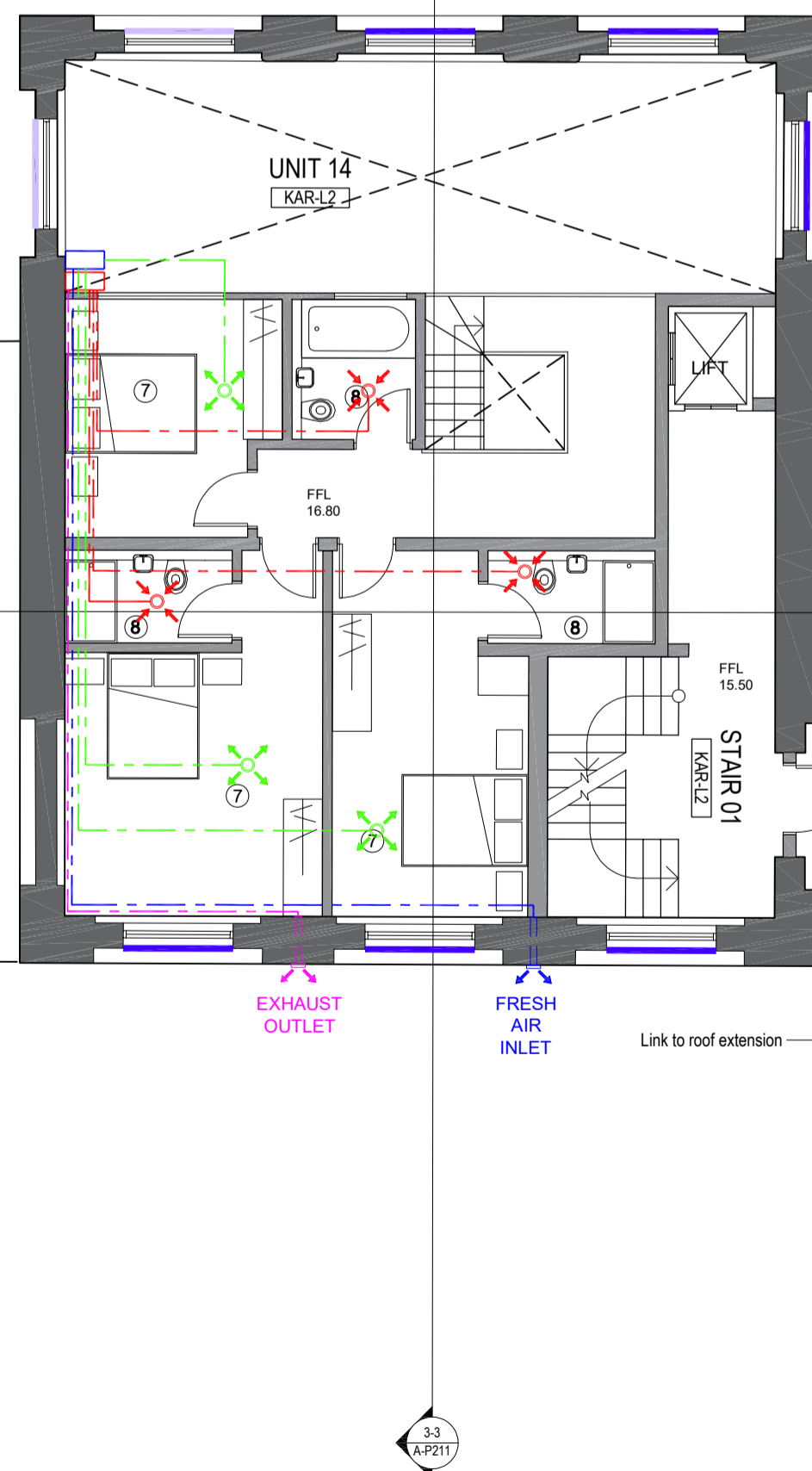
KARSLAKE BOILERHOUSE



KARSLAKE EAST PUMPHOUSE

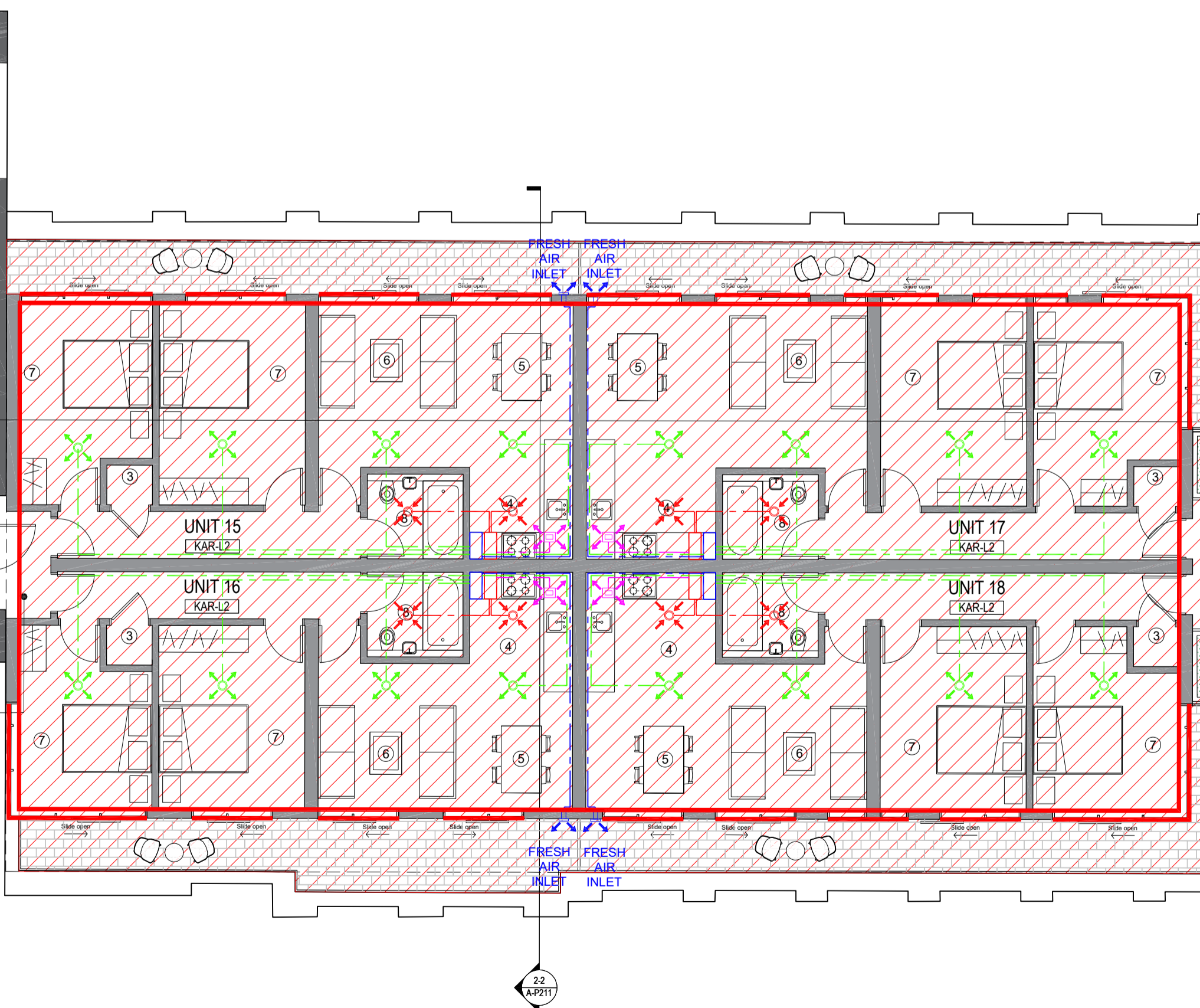


KARSLAKE WEST PUMPHOUSE

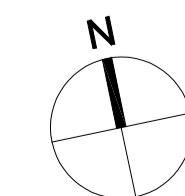
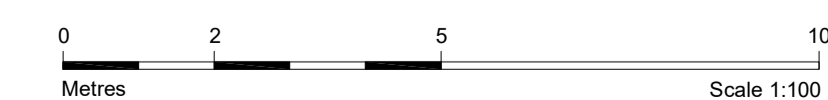
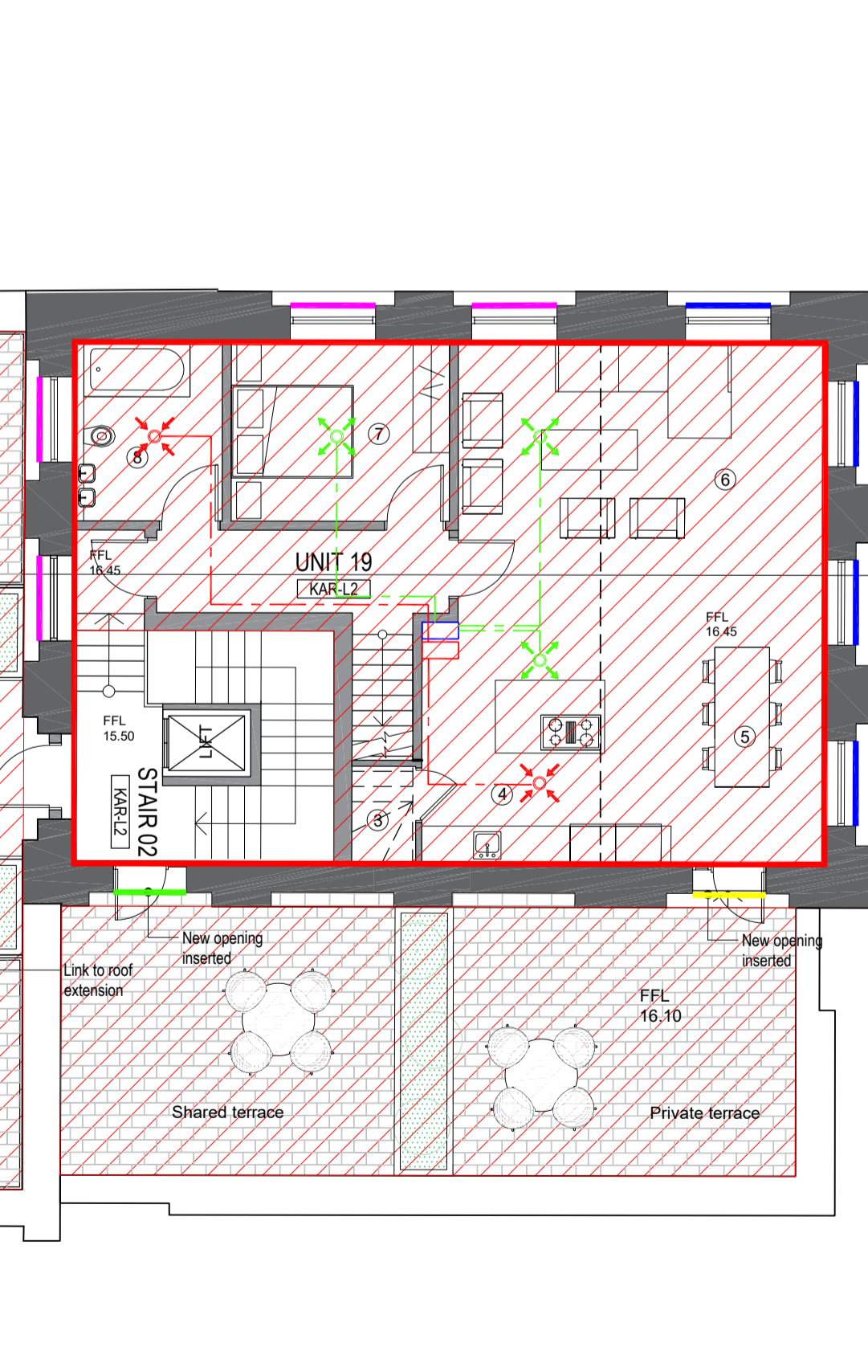


SCALE 1:100
KARSLAKE - Level 2 FLOOR PLAN

KARSLAKE BOILERHOUSE



KARSLAKE EAST PUMPHOUSE



USE OF DRAWINGS

DO NOT SCALE FROM THIS DRAWING. USE WRITTEN DIMENSIONS AND CHECK ON SITE. THIS DRAWING IS BASED ON SITE INFORMATION SUPPLIED BY THIRD PARTIES AND ACCURACY OF EXISTING FEATURES IS NOT GUARANTEED. ANY ERROR, OMISSION OR DISCREPANCY NOTED ON OR BETWEEN DRAWINGS AND OTHER DOCUMENTS MUST BE REPORTED IN WRITING IMMEDIATELY. ALL MECHANICAL, ELECTRICAL AND STRUCTURAL LAYOUTS / COMPONENTS ARE INDICATIVE AND MUST BE DESIGNED AND CHECKED BY SPECIALISTS. DO NOT START WORK ON SITE BEFORE CONFIRMING THAT ALL NECESSARY STATUTORY AND OTHER CONSENTS HAVE BEEN OBTAINED. THIS DRAWING IS COPYRIGHT AND MUST NOT BE DISTRIBUTED WITHOUT PERMISSION. ELECTRONIC CAD FILES MUST NOT BE ALTERED OR COPIED.

REVISIONS

REV	DATE	DESCRIPTION	CHECKED	DRAWN
-	04.07.2022	INITIAL ISSUE	JF	JF
A	26.05.2023	HISTORIC ENGLAND FOR COMMENT	JF	JF

THERMAL LINING LEGEND

CODE REF.	DESCRIPTION
(Red diagonal hatching)	Thermal Insulation Wall Lining
(Blue diagonal hatching)	Thermal Insulation Slab Lining

NOTE:

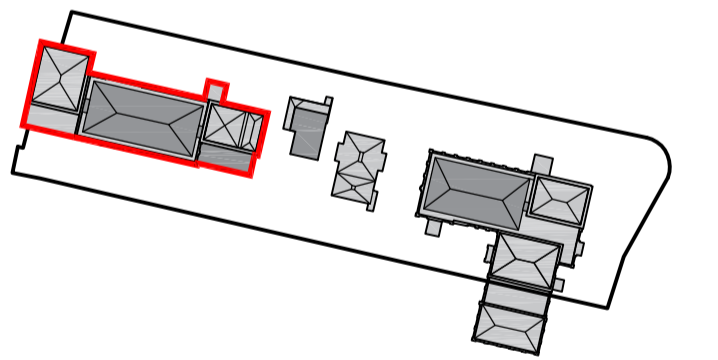
SURVEY INFORMATION BY M.J. REES AND COMPANY LTD, CHARTERED LAND SURVEYORS

WINDOW / DOOR CONDITION TYPE LEGEND

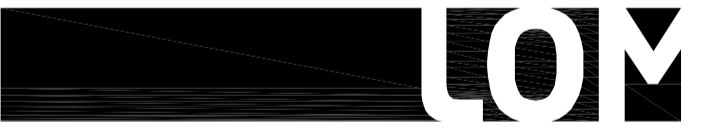
CODE REF.	DESCRIPTION
01	Replaced with new double glazed aluminium/crittall window
02	Replaced with double glazed window with additional secondary glazing required including aluminium panel to cover mezzanine level
03	New door with double glazed top light
04	New door with panel above and double glazed top light
05	New door with separate double glazed top light
06	Original window to be repaired with additional internal secondary glazing required to window reveal
07	Original window to be repaired with additional internal secondary glazing required to window reveal including etched glazing
08	Original window to be repaired with additional internal secondary glazing required to window reveal including aluminium panel to cover mezzanine level
09	Original window to be repaired with additional internal secondary glazing required to window reveal including aluminium panel to cover mezzanine level and etched glazing

* = New intervention window / door

- Key rooms:
- 1. Entry
 - 2. WC
 - 3. Storage
 - 4. Kitchen
 - 5. Dining
 - 6. Living
 - 7. Bedroom
 - 8. Bathroom
 - 9. Study



Site Plan Key



client
WATERFALL
PLANNING LTD

project
HAMPTON WATERWORKS

drawing title
PROPOSED
GA PLAN KARSLAKE L2,L3 & L4
MECH VENT STRATEGY

sheet size scale
A1 1:100 @ A1

status
PLANNING

drawing no. revision
1685-A-P121 A

LOM architecture and design
The Glass House 5 Sclater Street London E1 6JY UK
Phone +44(0)20 8444 2999 Email mail@lom-fdp.com
Web www.lom-architecture.com