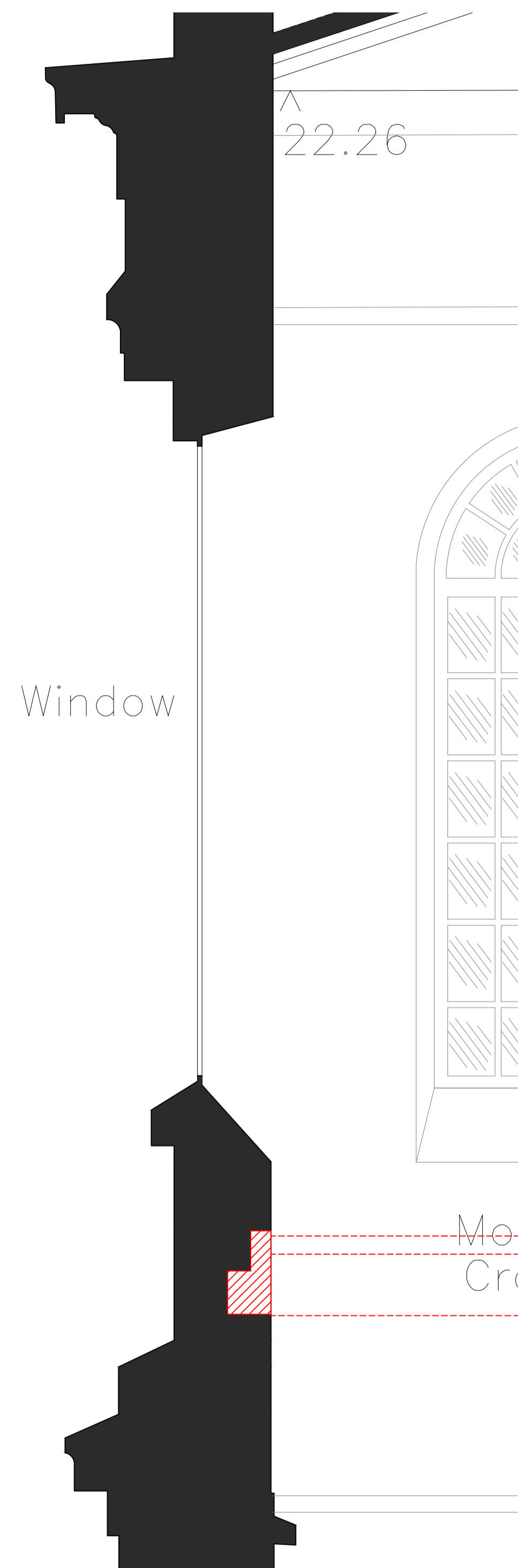


USE OF DRAWINGS

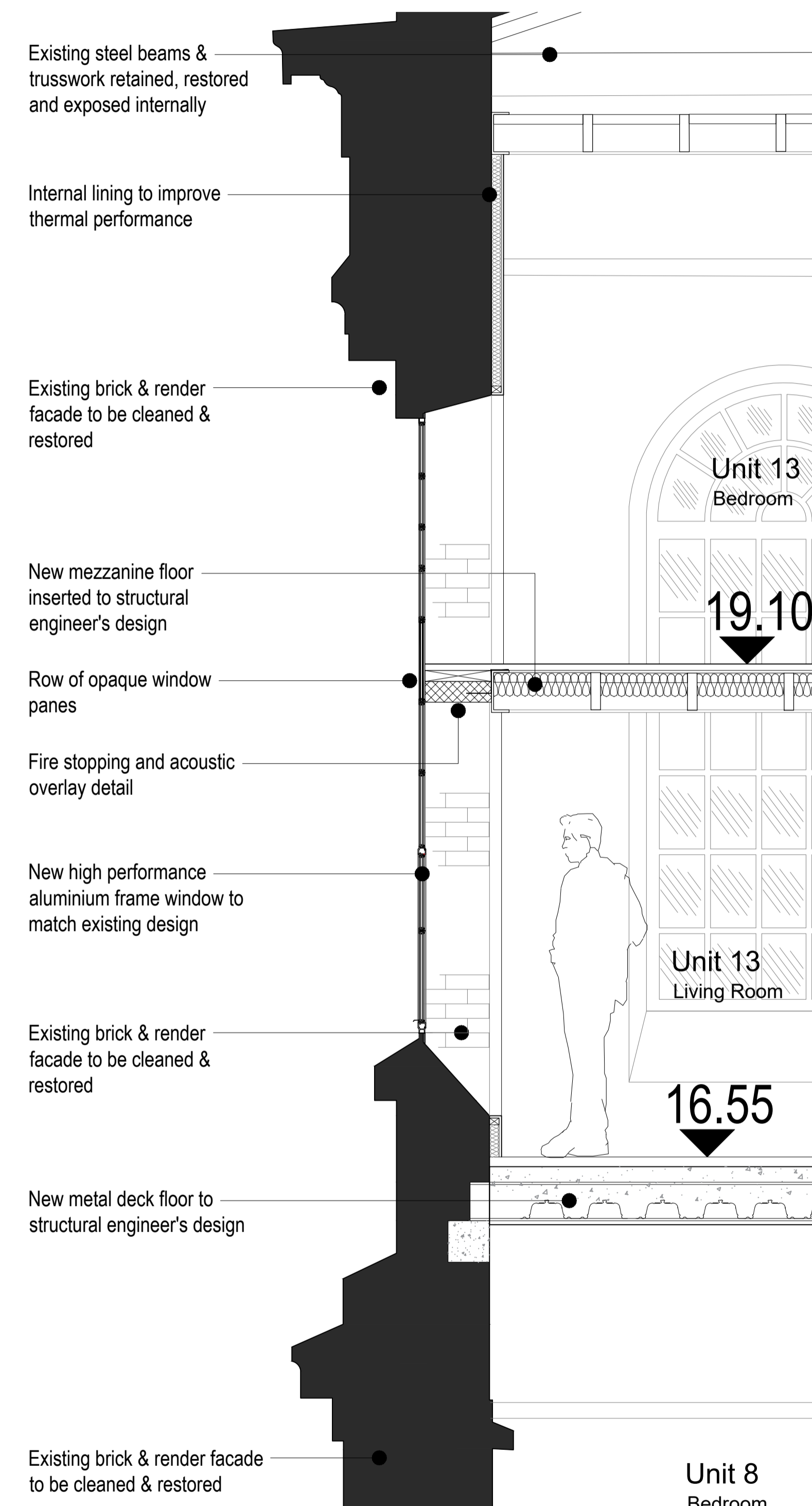
DO NOT SCALE FROM THIS DRAWING. USE WRITTEN DIMENSIONS AND CHECK ON SITE. THIS DRAWING IS BASED ON SITE INFORMATION SUPPLIED BY THIRD PARTIES AND ACCURACY OF EXISTING FEATURES IS NOT GUARANTEED. ANY ERROR, OMISSION OR DISCREPANCY NOTED ON OR BETWEEN DRAWINGS AND OTHER DOCUMENTS MUST BE REPORTED IN WRITING IMMEDIATELY. ALL MECHANICAL, ELECTRICAL AND STRUCTURAL LAYOUTS / COMPONENTS ARE INDICATIVE AND MUST BE DESIGNED AND CHECKED BY SPECIALISTS. DO NOT START WORK ON SITE BEFORE CONFIRMING THAT ALL NECESSARY STATUTORY AND OTHER CONSENTS HAVE BEEN OBTAINED. THIS DRAWING IS COPYRIGHT AND MUST NOT BE DISTRIBUTED WITHOUT PERMISSION. ELECTRONIC CAD FILES MUST NOT BE ALTERED OR COPIED.

REVISIONS

REV	DATE	DESCRIPTION	CHECKED DRAWN
-	12.09.2022	INITIAL ISSUE	CA JF
A	06.10.2022	GENERAL UPDATE	LW JF



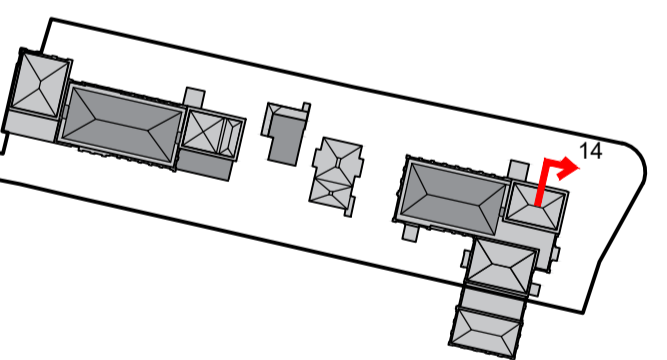
SCALE 1:20
EXISTING EAST PUMPHOUSE
 ENLARGED WALL SECTION 14



SCALE 1:20
PROPOSED EAST PUMPHOUSE - DETAIL 4
 ENLARGED WALL SECTION 14 - FLOOR / WINDOW WITH SECONDARY GLAZING - WITH WALL LINING

To be demolished

IN PROGRESS



client
**WATERFALL
 PLANNING LTD**

project
HAMPTON WATERWORKS

drawing title
**EXISTING AND PROPOSED
 ENLARGED WALL SECTIONS
 WINDOW CONDITION - TYPE 02**

sheet size scale
 A1 1:20 @ A1

status
PRELIMINARY

drawing no. revision
1685-A-P327 A

LOM architecture and design
 The Glass House 5 Sclater Street London E1 6JY UK
 Phone +44(0)20 8444 2999 Email mail@lom-fdp.com
 Web www.lom-architecture.com