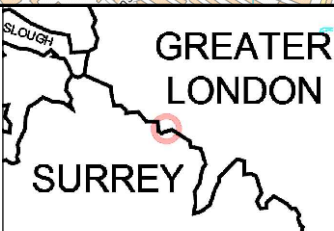
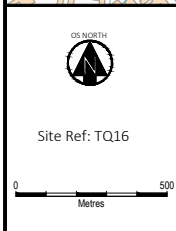
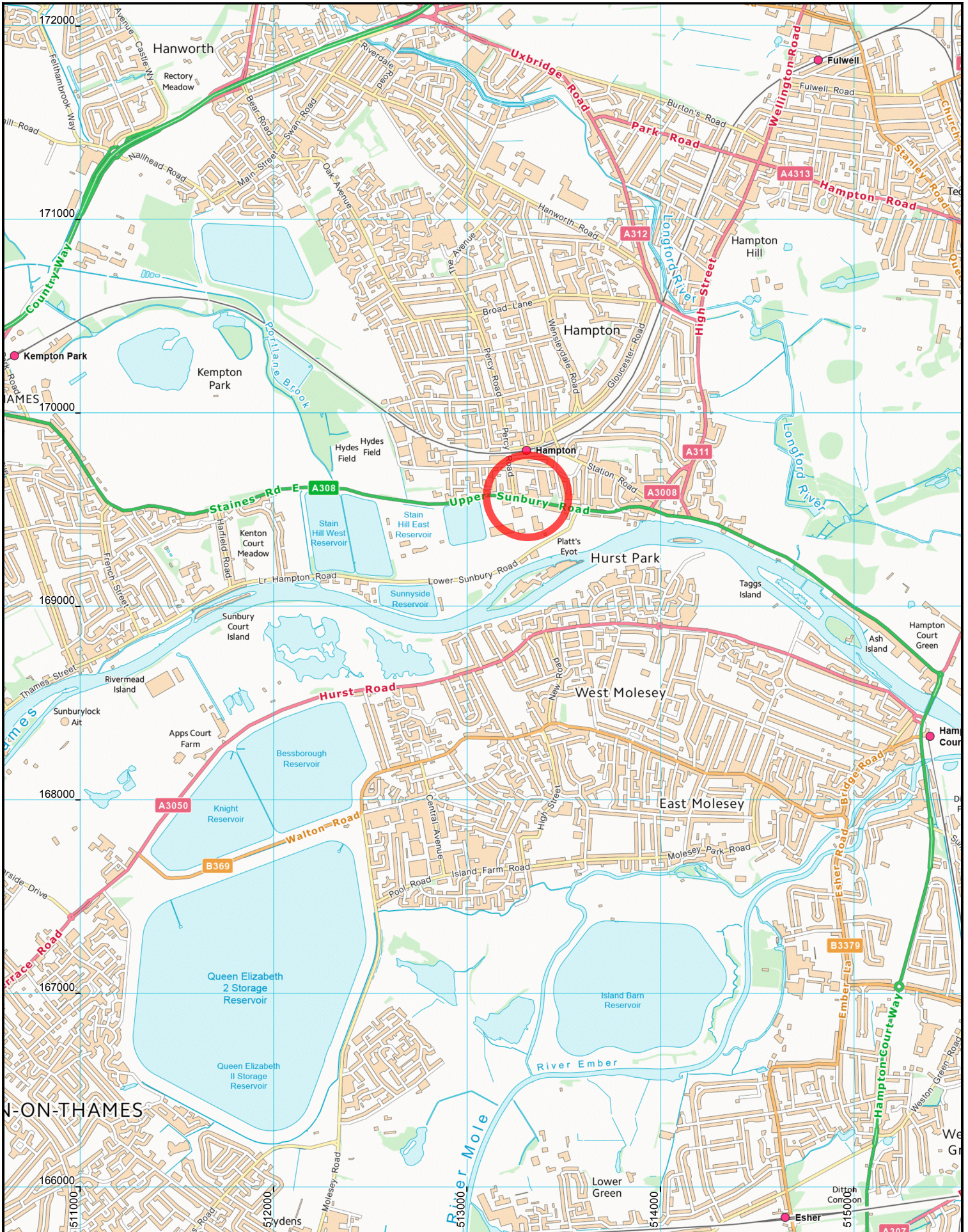


# Appendix A

## Drawings



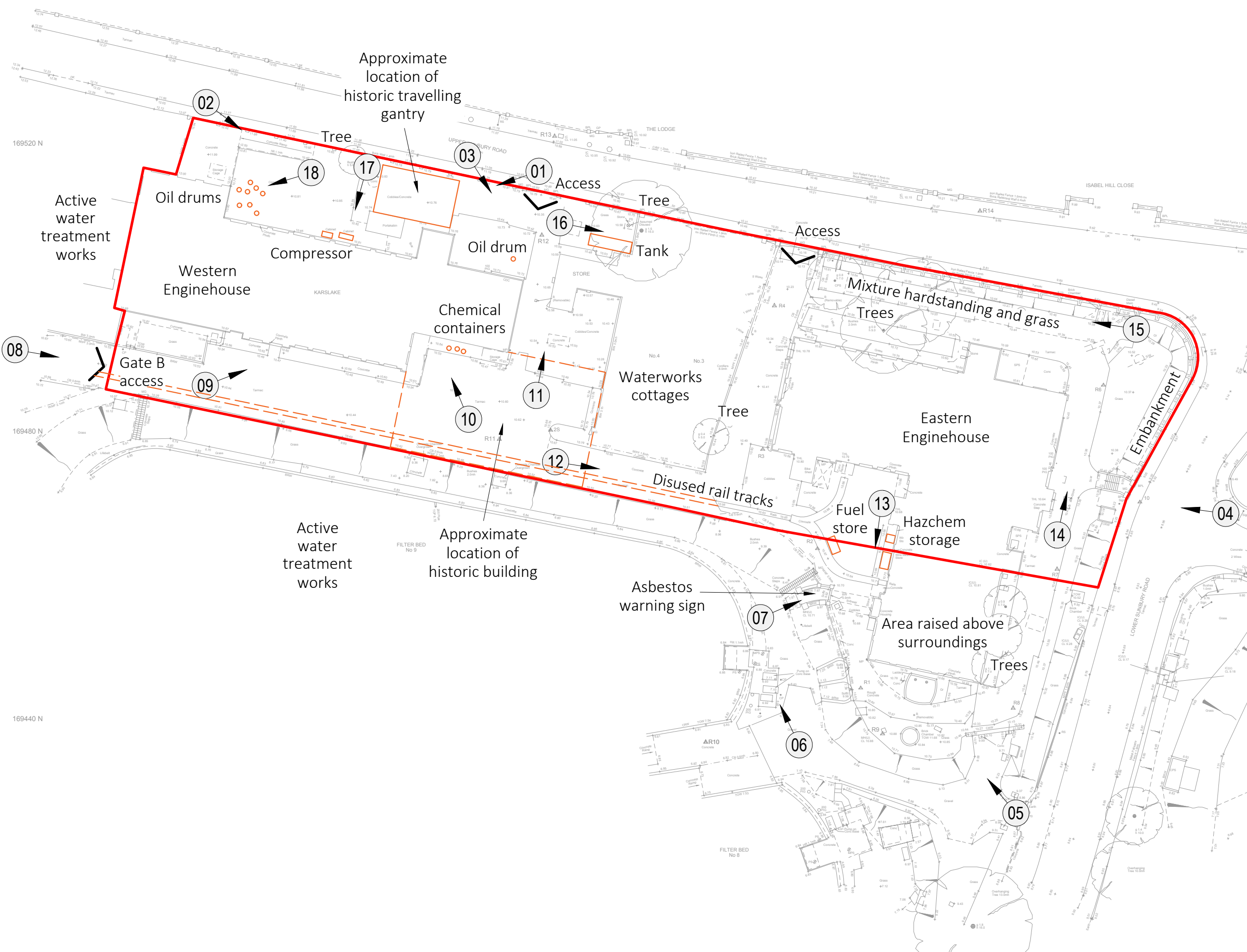
P1	FIRST ISSUE	AT	13/06/19	DM	13/06/19	KS	14/06/19
	REVISION NOTES/COMMENTS	DRAWN BY	DATE	CHECKED BY	DATE	APPROVED BY	DATE

**Hydrock**  
 Over Court Barrs  
 Over Lane  
 Almondsbury, Bristol BS32 4DF  
 TEL: 01454 619 533  
 FAX: 01454 614 125  
 E-Mail: bristol@hydrock.com  
 or visit www.hydrock.com

CLIENT  
 Waterfall Hampton Investment Ltd

PROJECT  
 HAMPTON WATERWORKS

TITLE SITE LOCATION PLAN	
HYDROCK PROJECT NO. C-12193-C	SCALE @ A4 1:25,000
PURPOSE OF ISSUE SUITABLE FOR INFORMATION	STATUS S2
DRAWING NO. (PROJECT CODE-ORIGINATOR-ZONE-LEVEL-TYPE-ROLE-NUMBER) 12193-HYD-XX-XX-DR-G-1000	REVISION P1



**KEY**

Site investigation boundary

Photo location and reference

**NOTES**

1. All dimensions are to be checked on site before the commencement of works. Any discrepancies are to be reported to the Architect & Engineer for verification. Figured dimensions only are to be taken from this drawing.

2. This drawing is to be read in conjunction with all relevant Engineers' and Service Engineers' drawings and specifications.

3. This drawing has been based on the following drawings and information:  
M. J. Rees and Company Ltd - Drawing No: 8245 1/10  
September 2014

FIRST ISSUE	AT	25/06/19	RS	25/06/19	KS	25/06/19
REVISION NOTES/COMMENTS						
REV.	DRAWN BY	DATE	CHECKED BY	DATE	APPROVED BY	DATE

**Hydrock**

Over Court Barns  
Over Lane  
Almondsbury, Bristol BS32 4DF  
TEL: 01454 619 533  
FAX: 01454 614 125  
E-Mail: bristol@hydrock.com  
or visit www.hydrock.com

**CLIENT**

Waterfall Hampton Investment Ltd

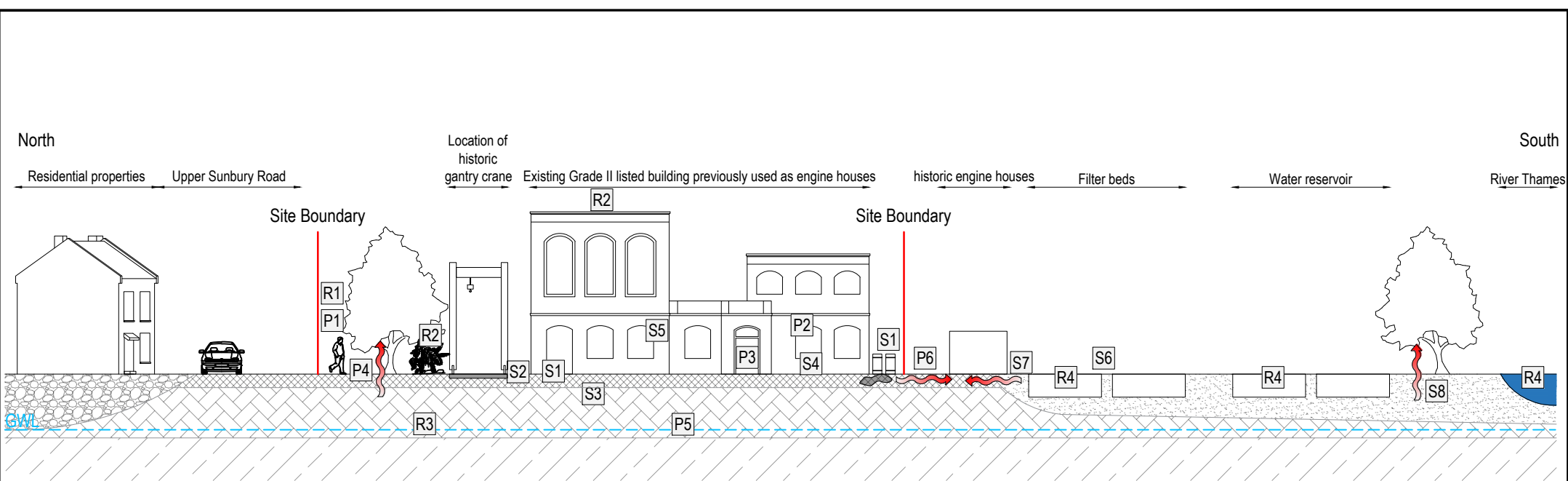
**PROJECT**

HAMPTON WATERWORKS

**TITLE**

SITE WALKOVER AND  
FEATURES PLAN

HYDROCK PROJECT NO. C-12193-C	SCALE @ A3 1:500	STATUS S2
PURPOSE OF ISSUE SUITABLE FOR INFORMATION	REVISION P1	
DRAWING NO. (PROJECT CODE-ORIGINATOR-ZONE-LEVEL-TYPE-ROLE-NUMBER) 12193-HYD-XX-XX-DR-G-1001		



**Potential on-site sources of contamination**

- S1 - Hydrocarbon fuels, lubricants and solvents from operation of historic engine houses and spillage from waste receptacles
- S2 - Made Ground material from past development
- S3 - Ground gases (CO<sub>2</sub> & CH<sub>4</sub>) from peat
- S4 - Hydrocarbon vapours from potential VOC and petroleum hydrocarbon spillages/leaks
- S5 - Buildings (asbestos)

**Potential off-site sources of contamination**

- S6 - Residual contamination from filter beds
- S7 - Storage, spillage, leakage and disposal of chemicals used in water treatment works
- S8 - Ground gases (CO<sub>2</sub> & CH<sub>4</sub>) from alluvium south of site

**Potential pathways**

- P1 - Humans: ingestion, skin contact, inhalation of dust and outdoor air
- P2 - Buildings: methane ingress via permeable gravels and/or construction gaps
- P3 - Buildings: VOC and petroleum hydrocarbon vapor ingress via permeable soils and/or construction gaps
- P4 - Plant life: root uptake
- P5 - Underlying groundwater: migration of contamination into the Kempton Park Gravel Member principal aquifer
- P6 - Surface water: Overland flow

**Potential receptors**

- R1 - Humans (neighbours, site end users)
- R2 - Development end use (buildings, utilities and landscaping)
- R3 - Groundwater: Principal aquifer status of the Kempton Park Gravel Member
- R4 - Surface water: filter beds, water reservoir and River Thames south of site

**Legend**

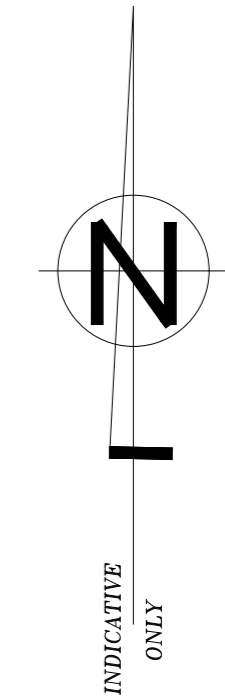
- Possible buried obstructions
- Made Ground
- Taplow Gravel Member
- Kempton Park Gravel Member
- Alluvium
- London Clay Formation

KEY	NOTES
	1.

<p>Hydrock</p> <p>Over Court Barns Over Lane Almondsbury, Bristol BS32 4DF TEL: 01454 619 533 FAX: 01454 619 125 E-Mail: bristol@hydrock.com or visit www.hydrock.com</p>					
<p>CLIENT Waterfall Hampton Investment Ltd</p>					
<p>PROJECT HAMPTON WATERWORKS</p>					
P1	FIRST ISSUE	AT	17/06/19	SN	17/06/19
	REVISION NOTES/COMMENTS				
REV.	DRAWN BY	DATE	CHECKED BY	DATE	APPROVED BY DATE

<p>TITLE CONCEPTUAL SITE MODEL</p>	
<p>HYDROCK PROJECT NO. C-12193-C</p>	<p>SCALE @ A4 NTS</p>
<p>PURPOSE OF ISSUE SUITABLE FOR INFORMATION</p>	<p>STATUS S2</p>
<p>DRAWING NO., (PROJECT CODE-ORIGINATOR-ZONE-LEVEL-TYPE-ROLE-NUMBER) 12193-HYD-XX-XX-DR-G-1002</p>	
<p>REVISION P1</p>	

All levels are based on existing site datum



STATION CO-ORDINATES

Station	Description	Easting	Northing	Level
1	Parker Kaise Nail	513594.481	169455.780	9.847
10	Parker Kaise Nail	513594.857	169455.787	9.785
11	Parker Kaise Nail	513593.906	169450.495	8.981
12	Parker Kaise Nail	513593.006	169444.662	10.763
R1	Hill Nail	513593.104	169444.662	10.588
R2	Hill Nail	513592.082	169444.662	10.673
R3	Hill Nail	513493.485	169477.821	10.555
R4	Parker Kaise Nail	513593.113	169444.662	10.286
R5	Parker Kaise Nail	513593.309	169447.317	10.477
R6	Parker Kaise Nail	513594.638	169446.747	10.379
R7	Parker Kaise Nail	513594.400	169441.175	10.487
R8	Parker Kaise Nail	513594.220	169441.873	10.323
R9	Parker Kaise Nail	513493.235	169437.992	10.556
R10	Parker Kaise Nail	513493.554	169437.144	6.831
R11	Parker Kaise Nail	513493.235	169437.992	10.556
R12	Parker Kaise Nail	513486.782	169527.296	10.532
R13	Parker Kaise Nail	513470.588	169513.337	11.076
R14	Parker Kaise Nail	513529.681	169510.939	10.003

N.B. Grid is related to existing site grid

Legend

(AC)	Assumed Connection	KO	Kerb Offset
AG	Above Ground	LV	Light Valve
AP	Approve	LB	Lighting Bulb
AR	Assumed Route	LP	Lamp Post
AV	Air Valve	M/P	Medium Pressure
B	Bolton	M/PF	Medium Pressure Fence
B/WF	Brick Wire Fence	MDC	Metal Drainage Channel
BP	Brick Paviors	MG	Metal Gate
BT	British Telecom IC	ms	Manhole
BT/LB	British Telecom JB	MH	Manhole
BR	Brick Road	MS	Manhole
BRW	Brick Retaining Wall	MP	Manhole
BRB	Brick Road	MW	Manhole
CB	Control Box	NFI	No Further Information
C/BF	Close Buried Fence	P/R	Post & Rail Fence
C/LF	Chain Link Fence	PC	Pedestrian Push Control
CDC	Concrete Drainage Channel	PE	Aluminium
CE	Concrete Cavity Panel	PG	Pipe into Ground
D/W	Concrete Headwall	PM	Pumping Manhole
CL	Cast Iron	PNV	Pipe Not Visible
DIG	Cable into Ground	RF	From Records
CL	Cable Level	RS	Road Surface
CP	Concrete Post	RG	Road Gully
CRW	Concrete Retaining Wall	RSP	Road Water pipe
CT	Cable Television IC	RSB	Road Water pipe
CT	Cable Television IC	RSB	Road Water pipe
DK	Drop Kerb	S/S	Sapping
E	Electricity IC	T	Tar
EP	Electricity Pole	TL	Traffic Light
(F)	Ford	TOP	Top Of Pipe Level
FI	Fire Hydrant	TOW	Top Of Wall Level
FP	Fire Post	TP	Telephone Pole
FR	Fireman's Water	TDS	Tackle Paving Slabs
G	Girth	U	Undertile
GAK	Gate	UL	Unable to Lift
GP	Gate Post	UTL	Unable to Trace
GUL	Gully	UTTF	Unable to Trace Further
Gy	Gas Valve	V	Valve
H	Hand Rail	W/P	Water Pipe
HR	Hand Rail	W/R	Water IC
I/P	Intermediate Pressure	W/MF	Water Main Fence
I/RP	Iron Ribbed Fence	WD	Way Duct
IC	Inspection Cover	WDE	Way Duct Empty
I	Inspection Cover	WP	Wooden Post
J	Junction Box	WV	Water Valve

SURVEYED

SURVEYED	RECORDS
CABLE TELEVISION	
DRAINAGE TOLL WATER	
DRAINAGE SURFACE WATER	
ELECTRICITY LV	
ELECTRICITY HV	
ELECTRICITY LV OVERHEAD	
ELECTRICITY HV OVERHEAD	
UNIDENTIFIED	
TELEPHONE OVERHEAD	
WATER	
CHAMBER	

- 1) Although every care has been taken in the location of buried services, due to the nature of the work, the extent, position and total excavations must be carried out to confirm service identification.
- 2) In the absence of evidence to the contrary the routes of confirmed connections between manholes are assumed to be direct.
- 3) Pipe sizes within manholes are estimated.
- 4) Chamber depths are generally measured, but all other service depths are measured electronically and therefore may only be approximate.
- 5) Unless otherwise stated, all information shown on this plan has been derived from records and is shown as having been taken from records or assumed, this is because:
  - a) Values could not be accessed.
  - b) Application of a tracer signal was unsuccessful.
  - c) The use of Ground Penetrating Radar was inconclusive.

AVAILABILITY OF SERVICE RECORDS			
TYPE	COMMENTS	TYPE	COMMENTS
DRAINAGE	YES	ELECTRICITY - HV	YES
WATER	YES	ELECTRICITY - LV	YES
GAS	YES	FIBRE OPTICS	NO
BT	YES	OIL PIPELINES	NO
CABLE TV	NO	OTHER	NO

See sheet 1 for topographical and buried services survey  
 See sheet 2 for Karlake building and Store ground floor plans  
 See sheet 3 for Karlake building first floor plan  
 See sheet 4 for Karlake building second and third floor plans  
 See sheet 5 for Ruston & Ward building ground floor and basement plans  
 See sheet 6 for Ruston & Ward building first floor plan  
 See sheets 7 & 8 for Ruston & Ward elevations  
 See sheets 9 & 10 for Karlake building and Store elevations

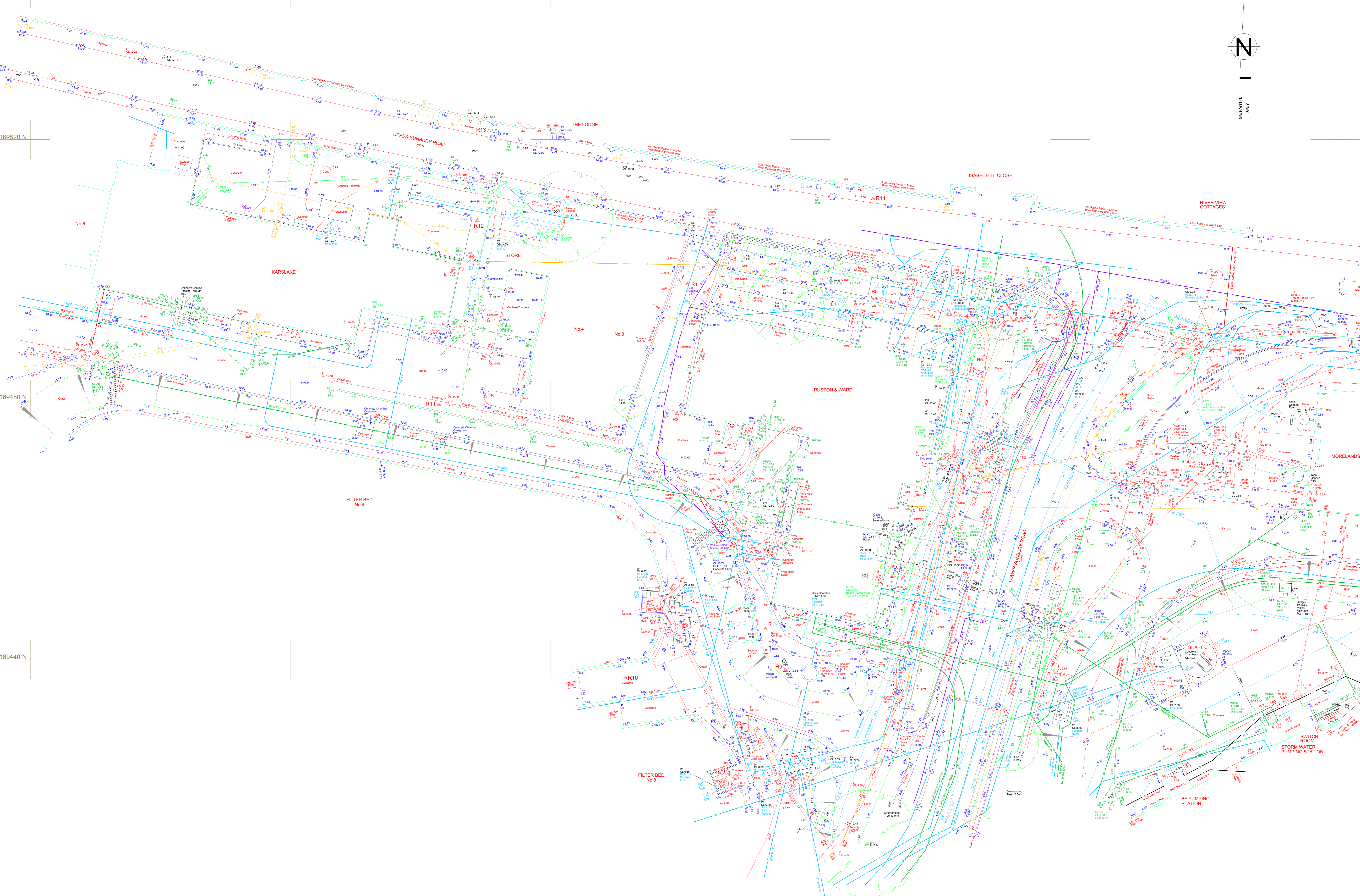
Rev	Date	Description
A	Oct 2014	Karlake Building BT RABM room details added
		Amendment

**M. J. REES AND COMPANY LTD**  
 Chartered Land Surveyors  
 Land, Engineering and Building Surveys  
 Unit A1 Vantage Office Park  
 Old Gloucester Road  
 Hambrook  
 Bristol BS16 1GW  
 Tel: 01454 202930  
 Email: survey@mjrrees.co.uk  
 www.mjrrees.co.uk

TOPOGRAPHICAL & BURIED SERVICES SURVEY  
 KARSLAKE AND RUSTON & WARD BLDGS  
 HAMPTON WTW

Job No: 8245 Sheet 1 of 10 Scale: 1/200 @ A0  
 Drawn by: M.P.S. Checked by: L.M.V. Date: September 2014

Client: Thomas Water Utilities Limited  
 Cleaver Court  
 Vesterin Road  
 Reading  
 Berkshire



169520 N

169480 N

169440 N

169400 N

5134

5134

5134

5135

5135

5135