



**Figure 13:** General view of interior of former Bull Engine House, showing 1932 Harland electrical pumping equipment and 1932 lifting beam, Ruston & Ward Engine House (low to medium significance)



**Figure 14:** 1932 steps and handrails to basement, Ruston & Ward Engine House (low significance)



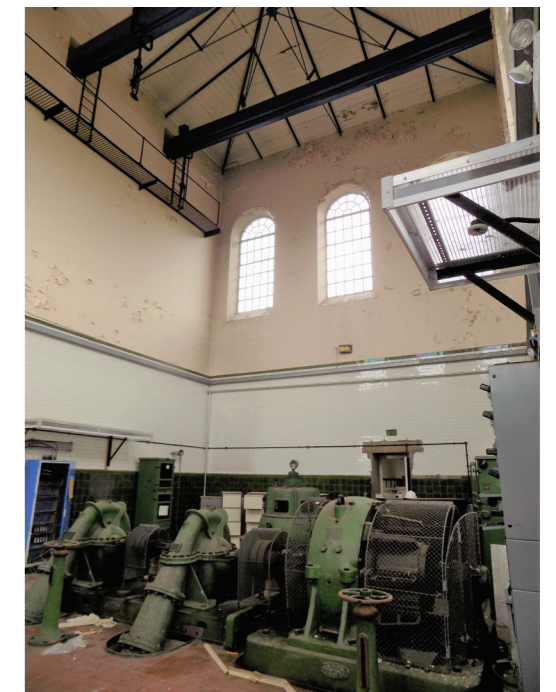
**Figure 15:** Reused cast iron beam incorporated in ground floor slab of Ruston & Ward Engine House (low significance)



**Figure 18:** 1932 Harland DC motor, Ruston & Ward Engine House (low to medium significance)



**Figure 17:** 1932 Harland DC motor, Ruston & Ward Engine House (low to medium significance)



**Figure 16:** 1932 Harland electrical pumping equipment & 1932 lifting beam (low to medium significance)



**Figure 19:** 1932 Harland twin impeller electric centrifugal pump set, Ruston & Ward Engine House (low to medium significance)



**Figure 20:** 1932 Harland twin impeller electric centrifugal pump set, Ruston & Ward Engine House (low to medium significance)



**Figure 21:** Bedplate detail: 1932 Harland twin impeller electric centrifugal pump set, Ruston & Ward Engine House (low to medium significance)



**Figure 23:** Detail of removed brass plate, 1932 Harland twin impeller electric centrifugal pump set, Ruston & Ward Engine House (low to medium significance)



**Figure 22:** 1932 Harland twin impeller electric centrifugal pump set and WH Allen replacement DC motor, Ruston & Ward Engine House (low to medium significance)



**Figure 24:** Detail of boss of primary wrought-iron roof (radial ties), Ruston & Ward Engine House (medium significance)



**Figure 25:** Primary wrought-iron roof, Ruston & Ward Engine House (medium significance)



**Figure 26:** Valve control standard, 1932 Harland twin impeller electric centrifugal pump set, Ruston & Ward Engine House (low to medium significance)



**Figure 27:** Primary lifting beams (3 of, for three Bull engines and later DC motors), Ruston & Ward Engine House (high significance)



**Figure 28:** 1932 Harland cover plate, Ruston & Ward Engine House (low to medium significance)