

Figure 29 A: Photo of three Bull engines in the Ruston & Ward Former Bull Engine House (aka Hicks), shortly before removal of engines in 1931



Figure 29 B: 1932 image of the Ruston Bull engine house at Hampton, following removal of the three engines, prior to the removal of the substantial brick engine bases over the pumping wells

HISTORIC BUILDING GAZETTEER

Ruston & Ward Former Ruston Engine House (originally part Sheffield Boiler House)

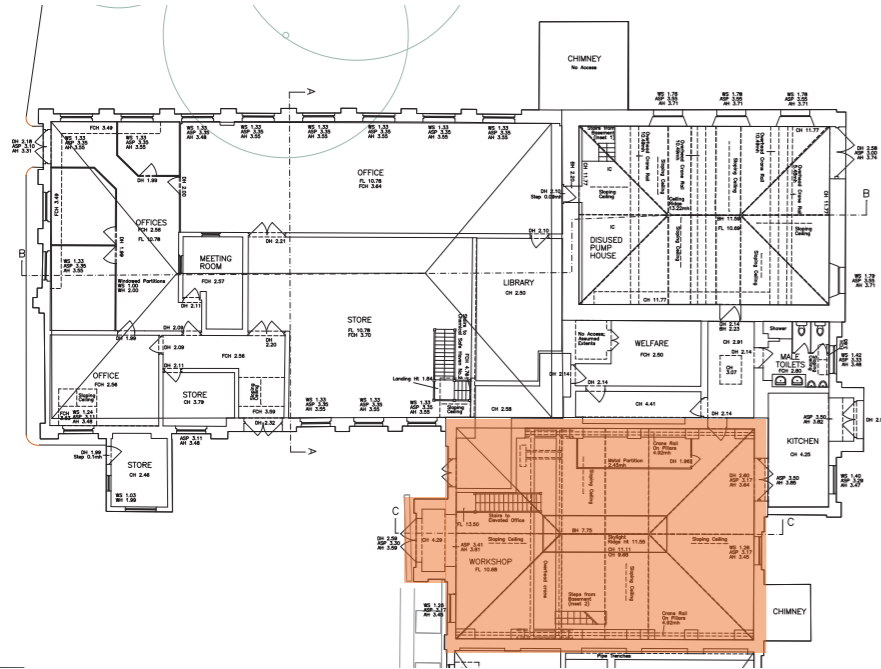


Figure 30: Location Plan: Ruston & Ward Building, former Ruston engine house (originally Sheffield's Boiler House)



Figure 31: Ruston & Ward Building, general view of interior of former Ruston engine house (originally Sheffield's Boiler House), showing former location of 1932 Ruston diesel generator set



Figure 34: Ruston & Ward Building, damaged electrical control panel in former Ruston engine house (originally Sheffield's Boiler House) (low to medium significance)



Figure 33: Ruston & Ward Building, 1932 steps and handrail to basement in former Ruston engine house (originally Sheffield's Boiler House) (low significance)



Figure 32: Ruston & Ward Building, damaged electrical control panel in former Ruston engine house (originally Sheffield's Boiler House) (low to medium significance)