



Figure 35: Maker's name on 1932 Vaughan gantry, former Ruston engine house (originally Sheffield's Boiler House) (medium to high significance)



Figure 36: 1932 roof structure, former Ruston engine house (medium significance)



Figure 39: 1932 cast-iron radiator, former Ruston engine house (originally Sheffield's Boiler House) (low significance)



Figure 38: 1932 door and tiles, former Ruston engine house (originally Sheffield's Boiler House) (medium significance)



Figure 37: Brick-built later 20th-century enclosure in former Ruston engine house (originally Sheffield's Boiler House) (no significance)

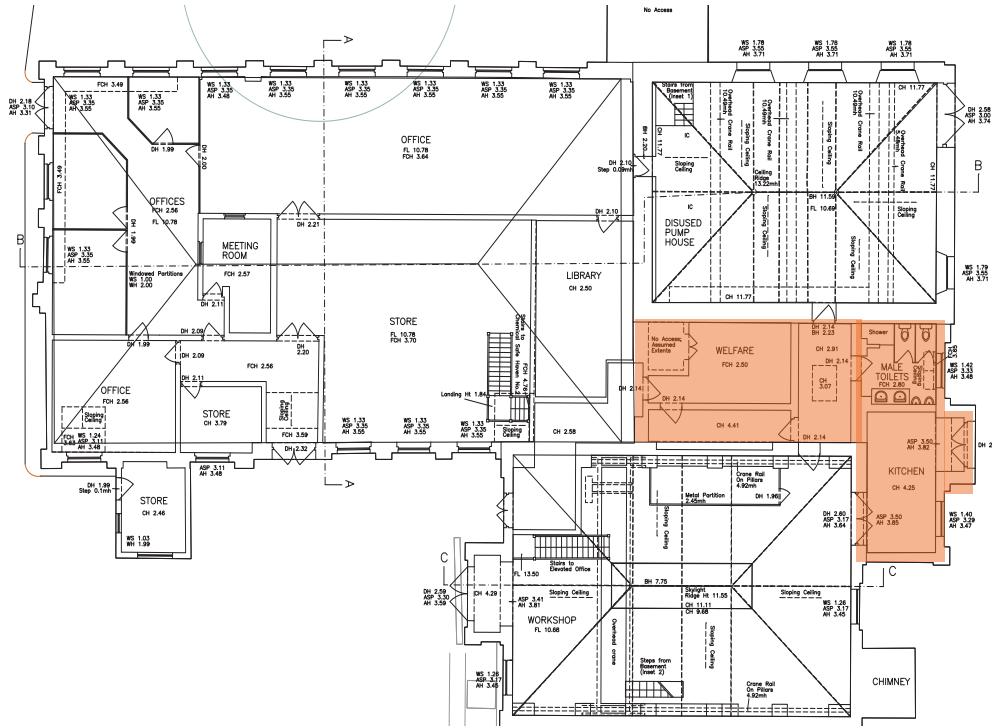


Figure 40: Location Plan: Ruston & Ward Building, ancillary spaces (originally part Sheffield's Boiler House)



Figure 41: 1932 tiles and doors (medium significance)



Figure 42: 1932 tiles and doors (medium significance)



Figures 43 to 46: 1932 doors (medium significance)



Figure 47: Ruston & Ward Former Ruston Engine House: Raising of walls of former Sheffield's boiler house and erection of new roof, during 1932 conversion for Ruston & Hornsby diesel generator set

SIGNIFICANCE

The former Sheffield boiler house was adapted to accommodate the Ruston and Hornsby diesel generator. The boiler house had become redundant when the steam pumps were replaced in 1931.

The diesel generator has since been removed but the control panel remains. The former boiler house fabric was modified to accommodate the



Figure 48: Ruston & Ward Former Ruston Engine House: Gutting of former Sheffield's boiler house in 1932, in preparation for adaptation to house Ruston & Hornsby diesel generator set

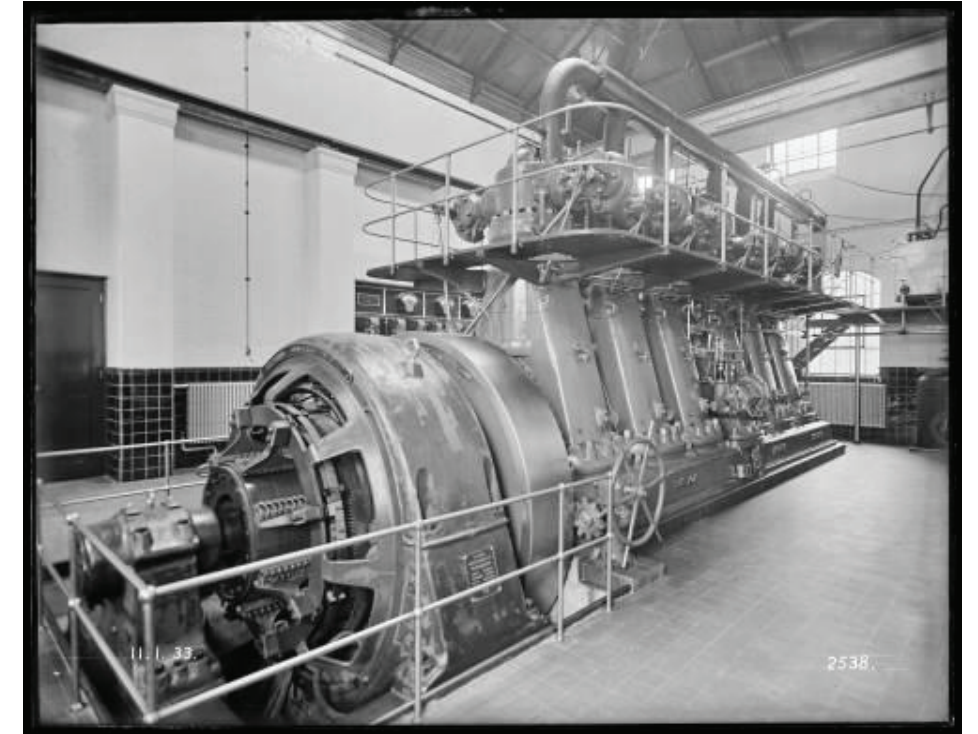


Figure 49: Ruston & Ward Former Ruston Engine House: 1933 image of new Ruston & Hornsby diesel generator set

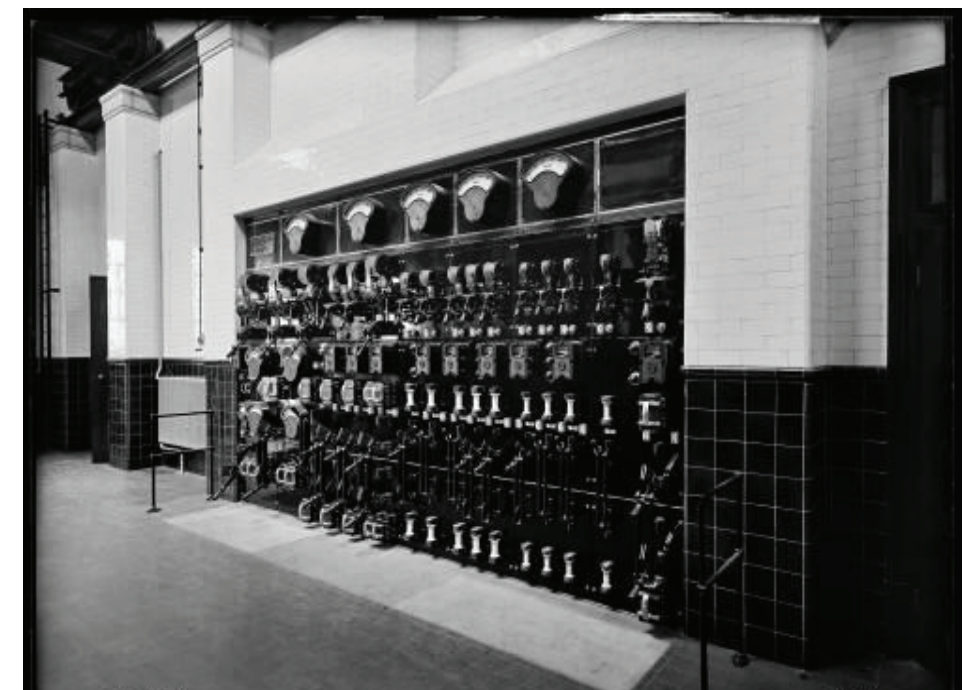


Figure 50: Ruston & Ward Former Ruston Engine House: 1933 image of control panel for Ruston & Hornsby diesel generator set



Figure 52: View of primary wrought-iron roof (radial ties), Ruston & Ward Former Boiler House (medium significance)

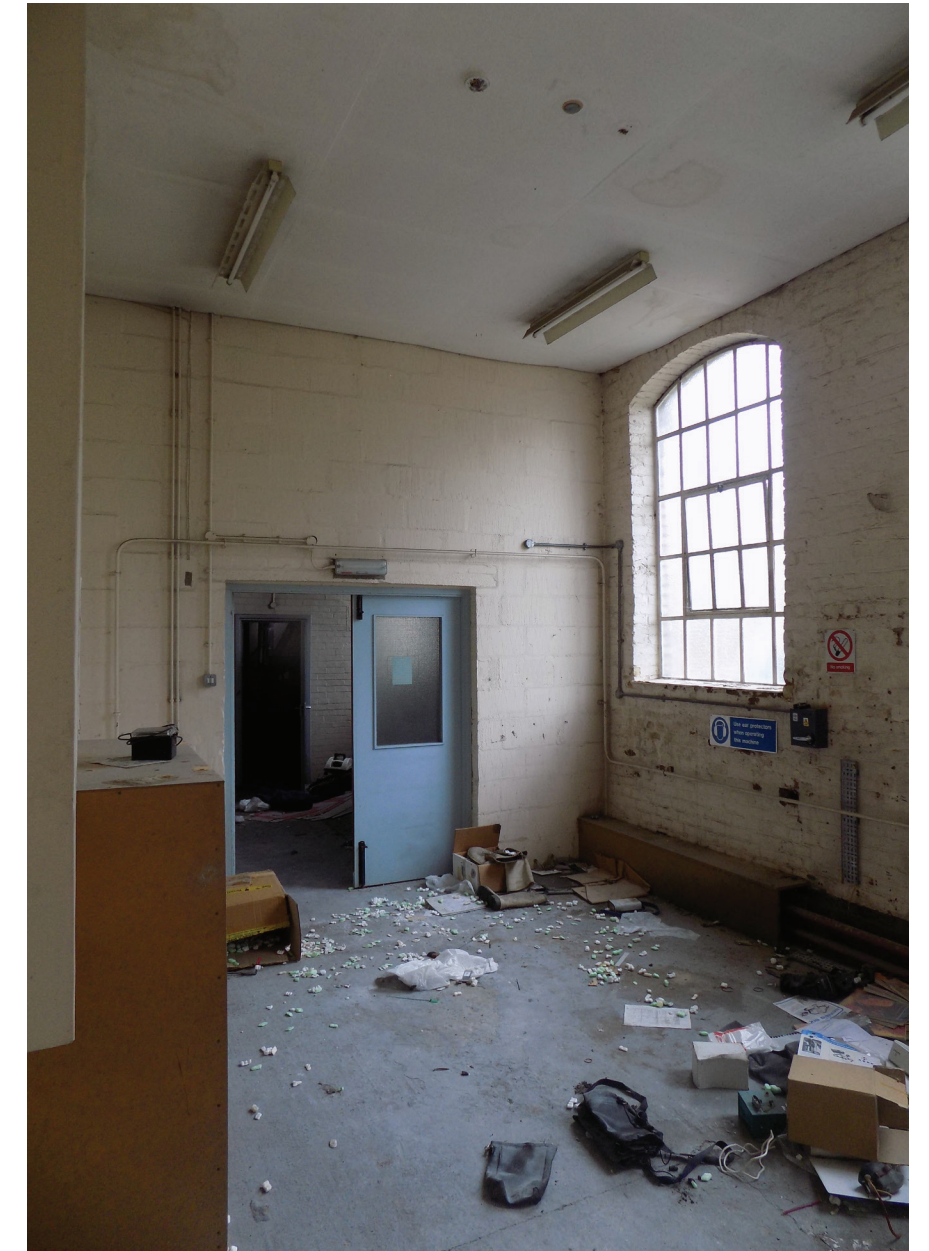


Figure 53: Much-altered interior and inserted 1932 north windows, Ruston & Ward Former Boiler House (no and low significance)



Figures 54 and 55: Views of much-altered interiors, Ruston & Ward Former Boiler House (no significance)