



Figure 132: Karslake Boiler House, South Elevation. Cast Iron window, showing slight bow indicating a high degree of repair might be required.



Figure 133: Karslake East Bull Engine House showing cement repairs where former warehouse building has been removed.



Figure 134: Karslake West Beam Engine Building showing Boiler House entry and lower storey welfare area with timber framed windows.

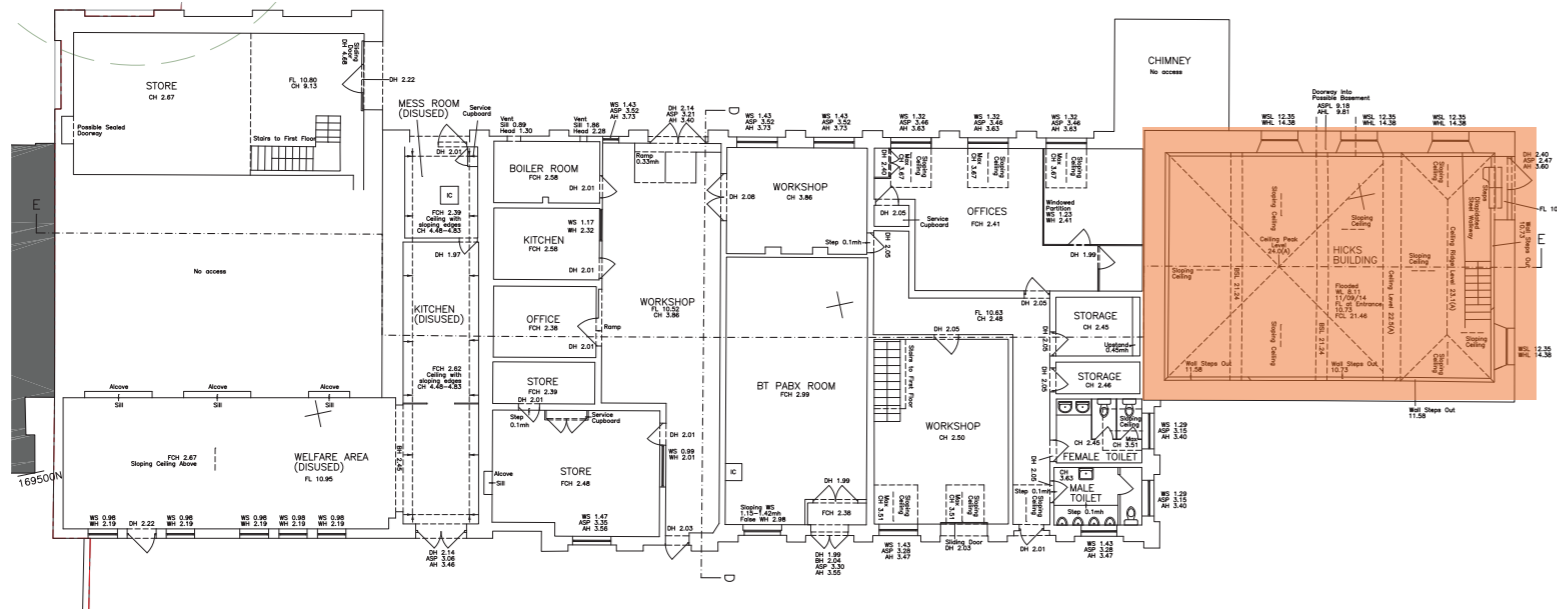


Figure 136: Interior detail showing below ground level and later inserted windows at ground floor level.



Figure 137: Interior showing original windows at upper level and 1930s windows at ground floor level.

Figure 138: Interior detail showing full height of wall adjacent to boiler house.



Figure 139: Interior detail showing corbels for engine lifting beams. These are the last remnants of the Bull Engine and therefore have relatively high level of interest.



Figure 140: Later, inserted ceiling under sarked roof of low significance,



Figure 141: Interior detail showing fittings for Bull Engine installation.

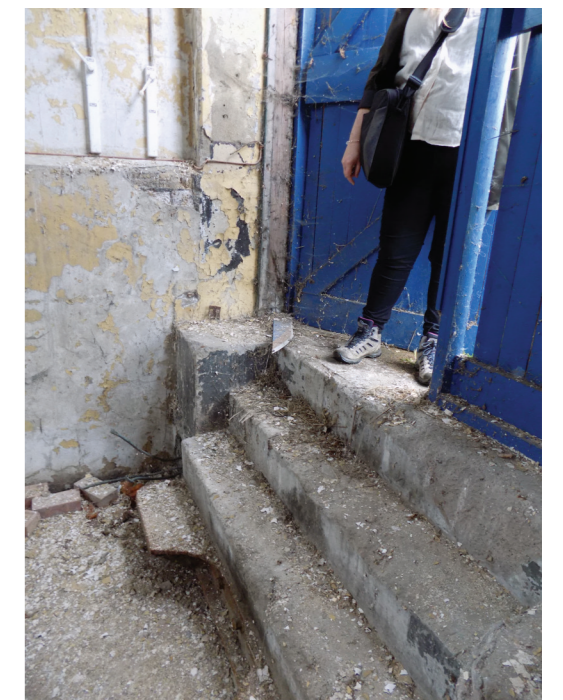
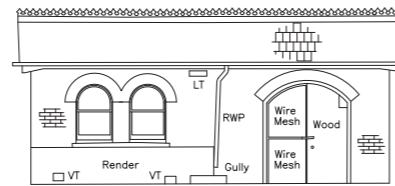


Figure 142 Interior steps showing relationship to exterior ground level.



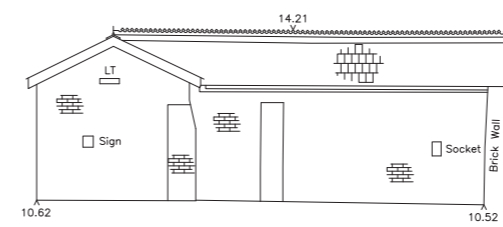
8.00m AOD

SCALE 1:100
Storehouse - Elevation 1



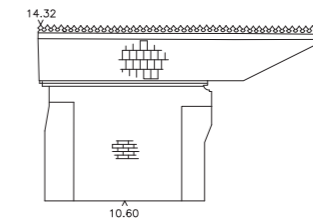
8.00m AOD

SCALE 1:100
Storehouse - Elevation 2



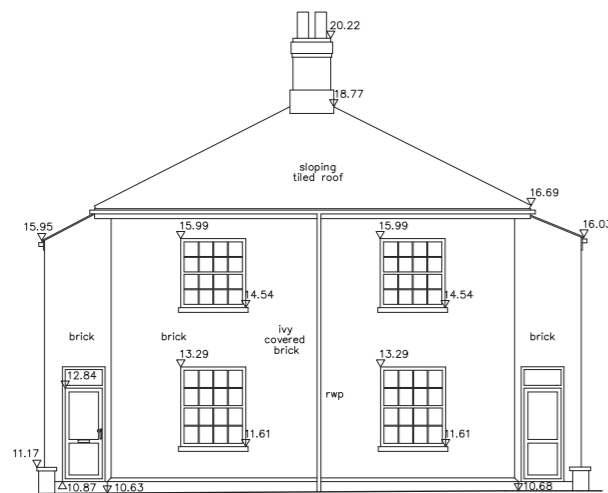
8.00m AOD

SCALE 1:100
Storehouse - Elevation 3



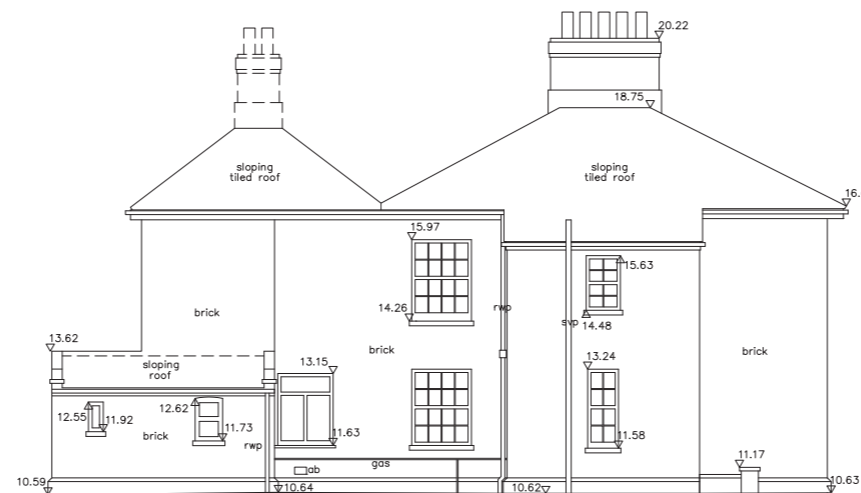
8.00m AOD

SCALE 1:100
Storehouse - Elevation 4



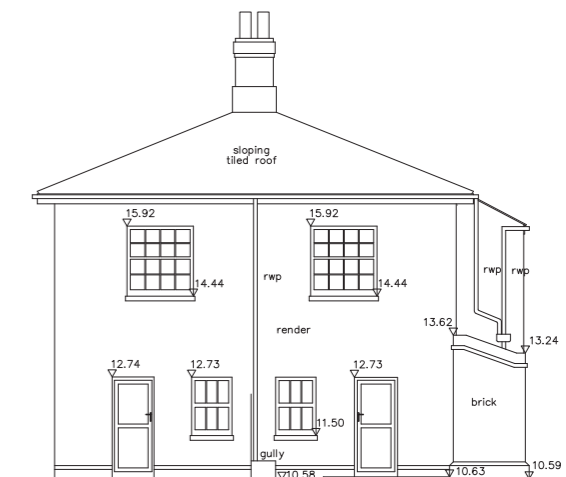
8.00m AOD

SCALE 1:100
Cottages - Elevation 1



8.00m AOD

SCALE 1:100
Cottages - Elevation 2



8.00m AOD

SCALE 1:100
Cottages - Elevation 3

Figure 143: Existing elevation drawings for cottages and storehouse