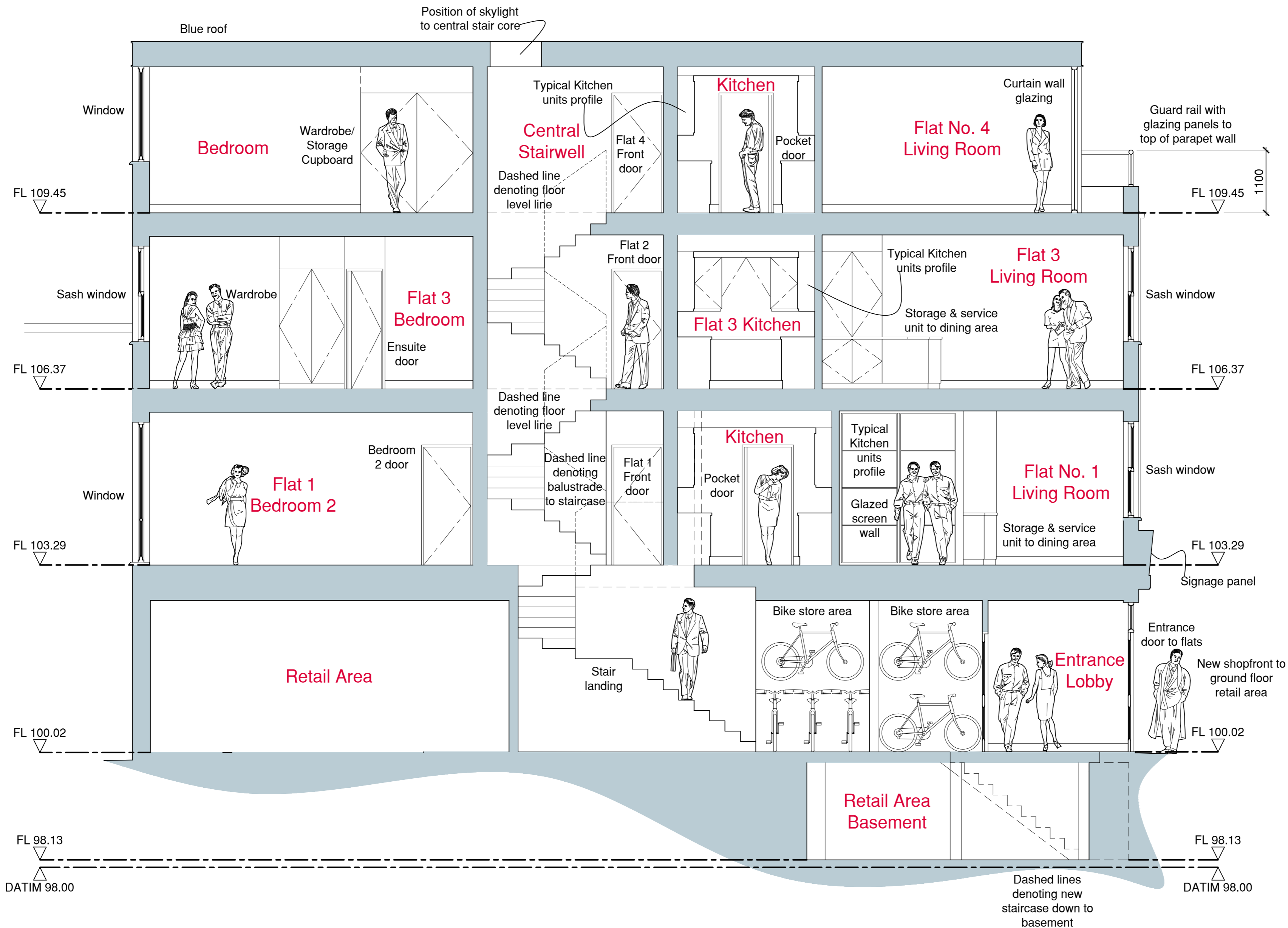


IMPORTANT INFORMATION

This drawing is the copyright of Design by Two and cannot be reproduced in any form without express consent of the company

This drawing uses survey information supplied by others and Design by Two cannot accept any liability, or guarantee the accuracy of that information. This drawing must be read in conjunction with all other drawings issued for this project, produced by Design by Two, Engineers, Specialist Suppliers etc. Therefore, all details and dimensions must be checked on site and all associated drawings checked prior to starting any works, and as work proceeds. Design by Two are to be consulted regarding any discrepancies



A	Section through detail updated in line with layout changes	NM	04.12.23
B	Section through detail updated in line with layout changes to first floor flat	NM	08.12.23
C	Roof type note amended	NM	15.02.24
REV	COMMENTS	BY	DATE

SUITE 7A HOLLY HOUSE BUSINESS CENTRE
220-224 NEW LONDON ROAD
CHELMSFORD
ESSEX
CM2 9AE

DESIGNBYTWO@OUTLOOK.COM WWW.DESIGNBYTWO.CO.UK

CLIENT
Johanna Cumming

PROJECT
No. 3 Duke Street, Richmond, Greater London TW9 1HP

TITLE
Proposed Section Detail A-A

SCALE @ A2 1:50	DRAWN BY NM	DATE Aug 23
PROJECT DWG NO. DB67/PL/03		REVISION C

