

**IMPORTANT INFORMATION**

This drawing is the copyright of Design by Two and cannot be reproduced in any form without express consent of the company

This drawing uses survey information supplied by others and Design by Two cannot accept any liability, or guarantee the accuracy of that information. This drawing must be read in conjunction with all other drawings issued for this project, produced by Design by Two, Engineers, Specialist Suppliers etc. Therefore, all details and dimensions must be checked on site and all associated drawings checked prior to starting any works, and as work proceeds. Design by Two are to be consulted regarding any discrepancies

A Balcony omitted  
Bedroom & En-suite reconfigured  
Bedroom area total amended NM 04.12.23  
B Indicative positions for 3no. ASHP units  
added to Residents Plant area NM 15.02.24

REV	COMMENTS	BY	DATE
-----	----------	----	------

SUITE 7A HOLLY HOUSE BUSINESS CENTRE  
220-224 NEW LONDON ROAD  
CHELMSFORD  
ESSEX  
CM2 9AE



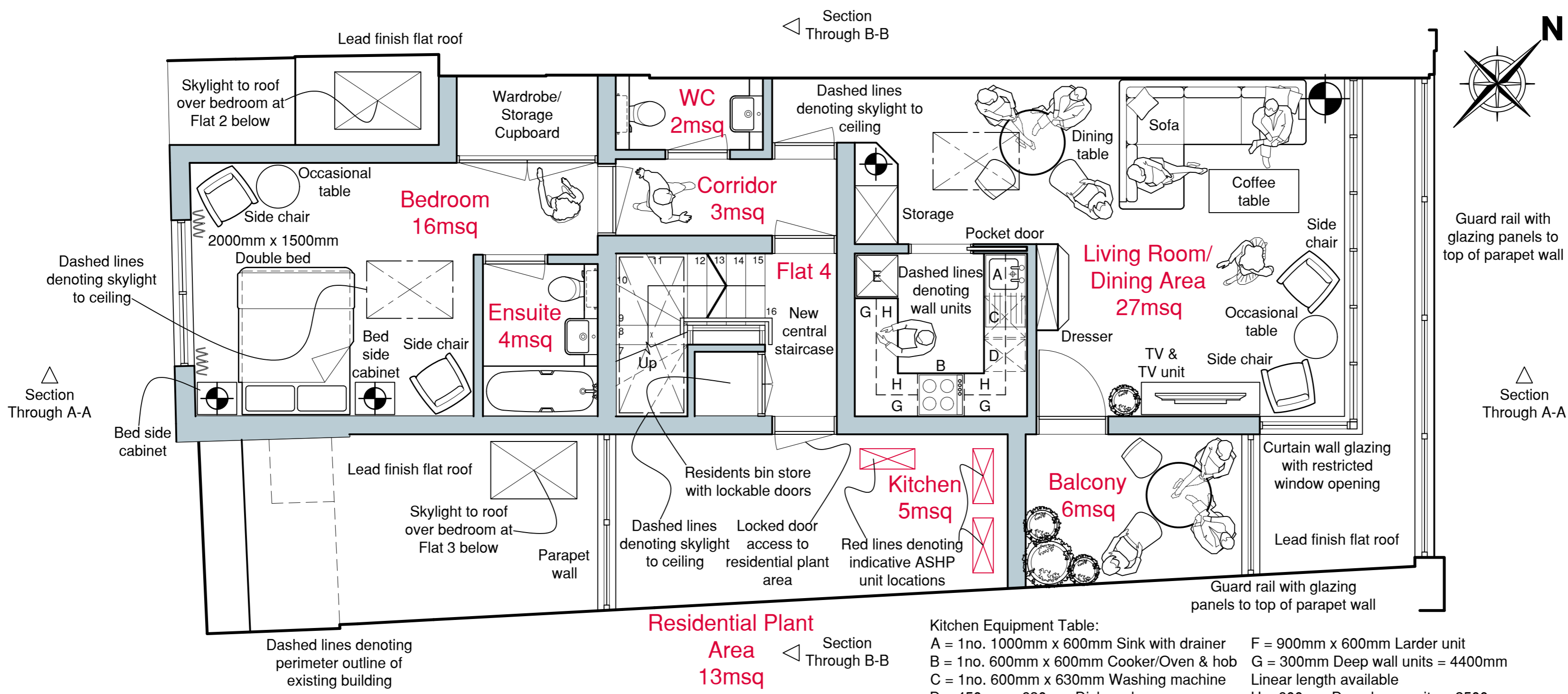
DESIGNBYTWO@OUTLOOK.COM WWW.DESIGNBYTWO.CO.UK

CLIENT  
**Johanna Cumming**

PROJECT  
**No. 3 Duke Street, Richmond,  
Greater London TW9 1HP**

TITLE  
**Proposed Roof Flat  
Floor Layout Plan**

SCALE @ A2 <b>1:50</b>	DRAWN BY <b>NM</b>	DATE <b>Aug 23</b>
PROJECT DWG NO. <b>DB67/PL/09</b>		REVISION <b>B</b>



**Kitchen Equipment Table:**

A = 1no. 1000mm x 600mm Sink with drainer  
 B = 1no. 600mm x 600mm Cooker/Oven & hob  
 C = 1no. 600mm x 630mm Washing machine  
 D = 450mm x 630mm Dishwasher  
 E = 600mm x 600mm Fridge freezer  
 F = 900mm x 600mm Larder unit  
 G = 300mm Deep wall units = 4400mm Linear length available  
 H = 600mm Deep base units = 2500mm Linear length available

**Housing Design Standards - London Planning Guide 2022**

Type of space	Furniture required in each room	Furniture size (mm)	Number of items required (by bedspace)									Type of space	Furniture required in each room	Furniture size (mm)	Number of items required (by bedspace)								
			1p	2p	3p	4p	5p	6p	7p	+	1p				2p	3p	4p	5p	6p	7p	+		
Living space	Armchair (or 'sofa seat' in addition to sofa where required below)	850 x 850	2	2	3	1	2	3	4	+1	Single bedroom	Single bed	1900 x 900	1	1	1	1	1	1	1			
	Settee - 2 seat (optional as above)	850 x 1300	(Item optional)									Bedside table	400 x 400	1	1	1	1	1	1				
	Settee - 3 seat (optional as above)	850 x 1850				1	1	1	1	1		Chest of drawers	450 x 750	1	1	1	1	1	1				
	TV	220 x 650	1	1	1	1	1	1	1	1		Desk and chair (+ chair)	500 x 1050	1	1	1	1	1	1	1			
	Coffee table (or 750 diameter)	500 x 1050	1	1	1	1	1	1	1	1		Single wardrobe	600 x 600	1	1	1	1	1	1	1			
	Occasional table	450 x 450				1	1	1	1	1		Length in mm											
	Storage units	500 x length shown	1000	1000	1000	1500	2000	2000	2000	+1		(1) Sink top with drainer	600 x 1000	1000	1000	1000	1000	1000	1000	1000			
Dining space	Dining chair	450 x 450	2	2	3	4	5	6	7	+	(2) Cooker (or oven + hob) space	600 x 600	600	600	600	600	600	600	600				
	Dining table	800 x length shown	800	800	1000	1200	1350	1500	1650	+	(3) Washing machine position / worktop	600 x 630	630	630	630	630	630	630	630				
Double bedroom	Double bed in principle bedroom	2000 x 1500		1	1	1	1	1	1	1	(4) Other base units	600 x length shown	600	1200	1600	1600	1600	2700	2700	+			
	Double bed in other double bedroom	1900 x 1350		1	1	1	1	1	1	1	(4a) Dishwasher / worktop (included in 4)	600 x length shown	(Item optional)										
	Bedside table	400 x 400		2	2	2	2	2	2	2	(5) Ancillary equipment space	600 x length shown					600	600	1200	1200			
	Desk and chair (+ chair)	500 x 1050		1	1	1	1	1	1	1	(6) Fridge / freezer space	600 x 600	600	600	600	600	600	600	600	600			
	Chest of drawers	450 x 750		1	1	1	1	1	1	1	(7) Recycling bins space	600 x length shown	300	300	300	300	600	600	600	600			
Twin bedroom	Single bed	1900 x 900				2	2	2	2	2	(8) Total length of fitments (Items 1 to 7)		3730	4330	4730	4730	5630	6730	7330	+			
	Bedside table	400 x 400				2	2	2	2	2	(9) Wall cupboards		300 x maximum available length										
	Chest of drawers	450 x 750				1	1	1	1	1	Note: Item 3,5,7 may be in other rooms or spaces but should be close to kitchen												
	Desk and chair (+ chair)	500 x 1050				1	1	1	1	1	W/C + cistern	500 x 700	1	1	1	1	1	1	1	1			
	Double wardrobe	600 x 1200				1	1	1	1	1	Bath	700 x 1700	1	1	1	1	1	1	1	1			
Bathroom	Hand wash basin	450 x 600				1	1	1	1	1	Hand wash basin	450 x 600	1	1	1	1	1	1	1	1			
	Shower tray	750 x 750									Shower tray	750 x 750	(Item optional)										
	W/C + cistern	500 x 700									W/C + cistern	500 x 700	(Where required)										
	Hand rinse basin	250 x 350									Hand rinse basin	250 x 350	(Where required)										

