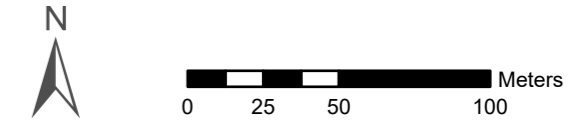


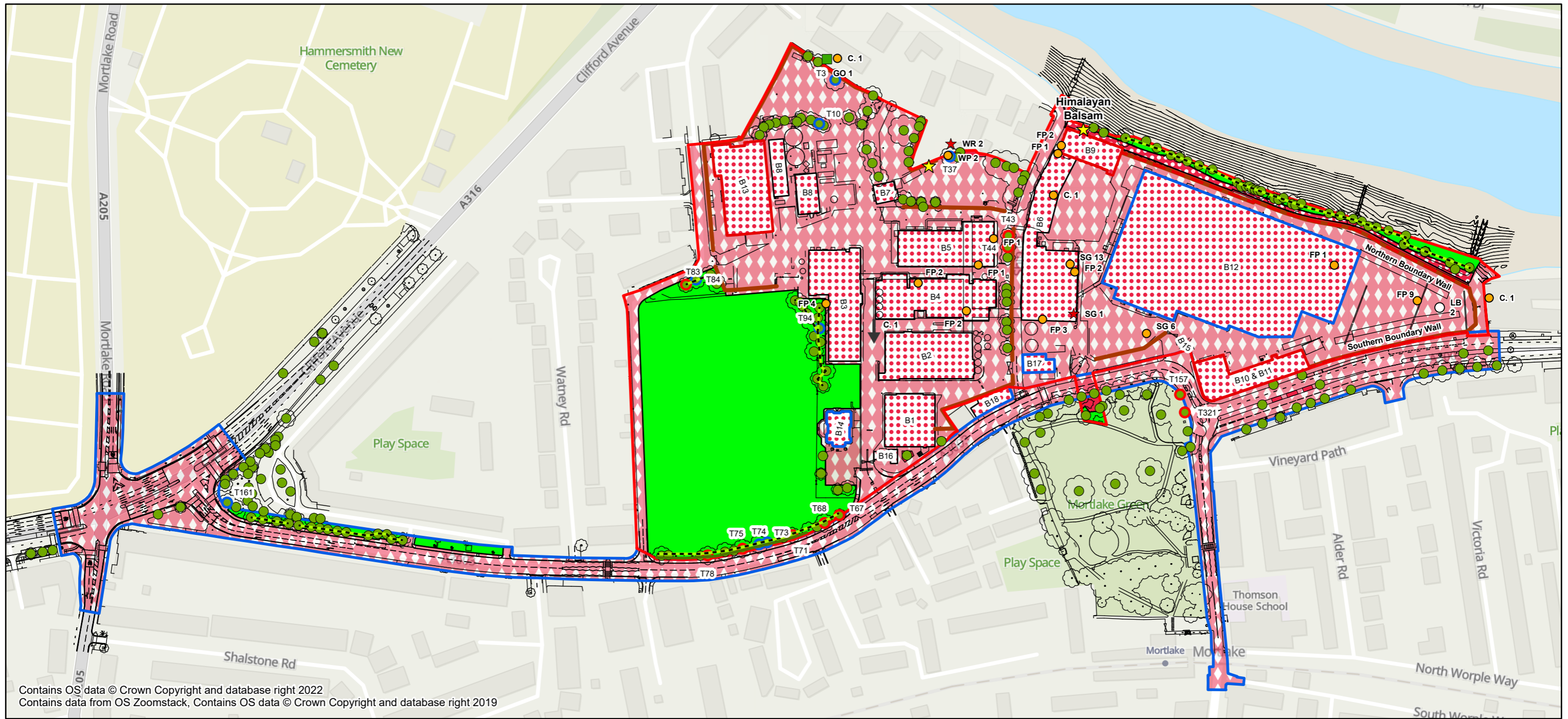
Contains OS data © Crown Copyright and database right 2022
 Contains data from OS Zoomstack, Contains OS data © Crown Copyright and database right 2019

- Planning Application Boundary
- S278 Works Boundary
- Modified Grassland - g4 - 64, 66, 75, 76
- Ornamental Planting - u - 48, 80, 1160
- Buildings - u1b5 - 97
- Hardstanding - u1b6 - 111
- Wall - u1e - 68, 80
- Hedgerow - h2b - 17, 48, 1160
- Line of Trees - w1g6, 76
- Urban Tree - u - 1170
- Trees with Low Bat Roost Potential

- Trees with Moderate Bat Roost Potential
- Buildings with Low Bat Potential
- Buildings with Moderate Bat Potential
- Features with Moderate Bat Potential
- ★ Invasive Species
- Bird Survey
- Calling
- ◆ Displaying
- Flying Around
- ✱ Nest
- ★ Singing
- Visual

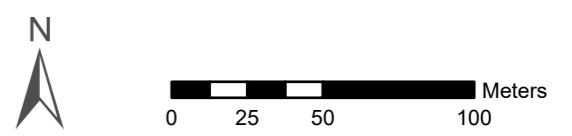


Project Details	WIE18671-100: Stag Brewery
Figure Title	Figure 13.9: Peregrine Falcon and Breeding Bird Survey Map - 24th June 2022
Figure Ref	WIE18671-100-GIS-ESSoC2-13.9A
Date	2022
File Location	\\s-inc\swiel\projects\wie18671\100\grlessoc2 www.watermangroup.com



Contains OS data © Crown Copyright and database right 2022
 Contains data from OS Zoomstack, Contains OS data © Crown Copyright and database right 2019

- | | | | |
|--|------------------------------------|---|---------------|
| Planning Application Boundary | Hardstanding - u1b6 - 111 | Trees with Moderate Bat Roost Potential | Displaying |
| S278 Works Boundary | Wall - u1e - 68, 80 | Buildings with Low Bat Potential | Flying Around |
| Modified Grassland - g4 - 64, 66, 75, 76 | Hedgerow - h2b - 17, 48, 1160 | Buildings with Moderate Bat Potential | Nest |
| Ornamental Planting - u - 48, 80, 1160 | Line of Trees - w1g6, 76 | Features with Moderate Bat Potential | Singing |
| Artificial Unvegetated Unsealed Surface - u1c - 17, 80 | Urban Tree - u - 1170 | Invasive Species | Visual |
| Buildings - u1b5 - 97 | Trees with Low Bat Roost Potential | Bird Survey | Flying S |
| | | Calling | |



Project Details	WIE18671-100: Stag Brewery
Figure Title	Figure 13.10: Peregrine Falcon and Breeding Bird Survey Map - 12th July 2022
Figure Ref	WIE18671-100-GIS-ESSoc2-13.10A
Date	2022
File Location	\\s-incs\wiel\projects\wie18671\100\grlessoc2 www.watermangroup.com