

Contains OS data © Crown Copyright and database right 2020

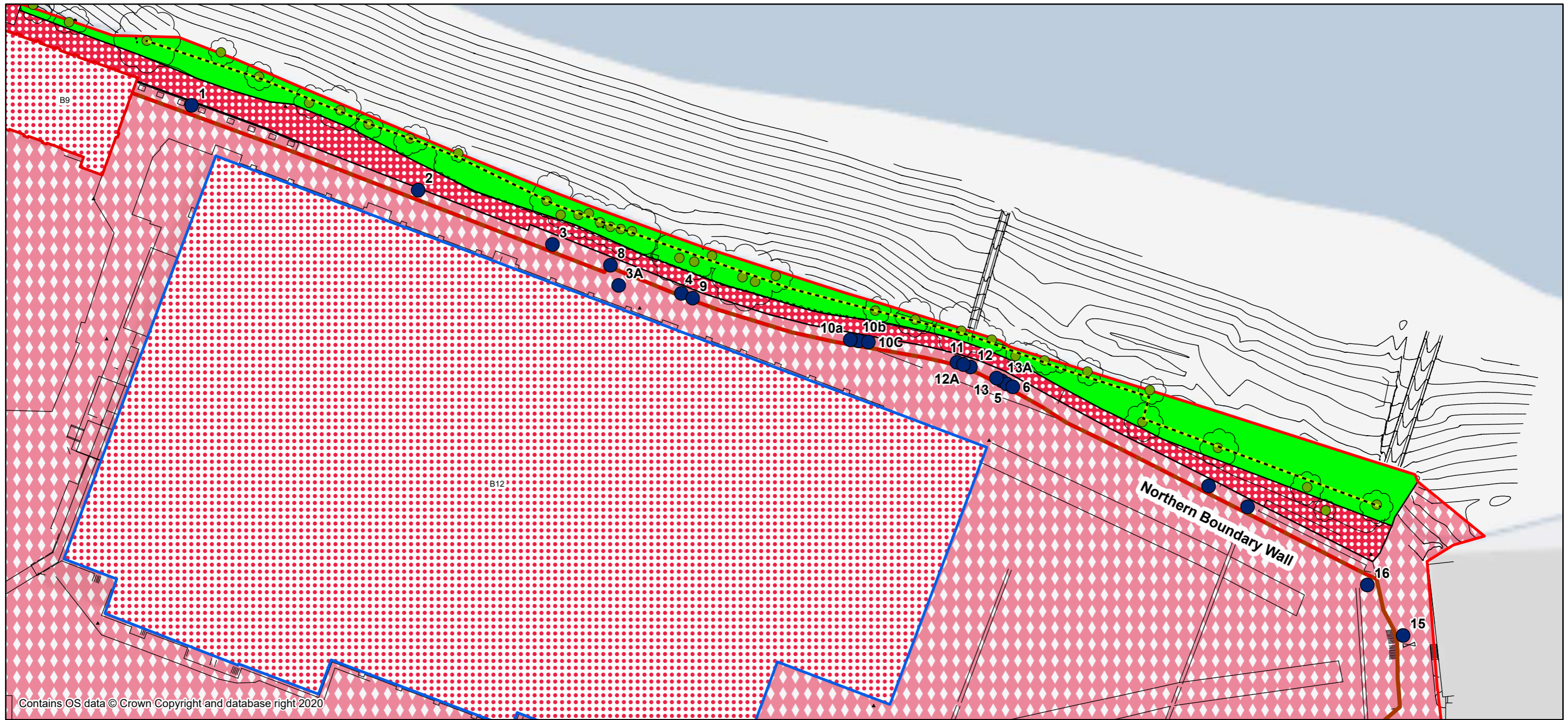
- | | | |
|--|------------------------------------|---|
| Planning Application Boundary | Hardstanding - u1b6 - 111 | Trees with Moderate Bat Roost Potential |
| S278 Works Boundary | Wall - u1e - 68, 80 | Buildings with Low Bat Potential |
| Modified Grassland - g4 - 64, 66, 75, 76 | Hedgerow - h2b - 17, 48, 1160 | Buildings with Moderate Bat Potential |
| Ornamental Planting - u - 48, 80, 1160 | Line of Trees - w1g6, 76 | Features with Moderate Bat Potential |
| Artificial Unvegetated Unsealed Surface - u1c - 17, 80 | Urban Tree - u - 1170 | Invasive Species |
| Buildings - u1b5 - 97 | Trees with Low Bat Roost Potential | |



0 25 50 100 Meters

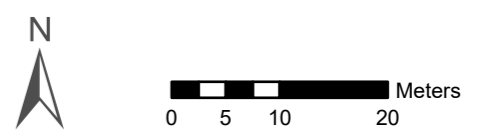
Project Details	WIE18671-100: Stag Brewery
Figure Title	Figure 13.1: Habitat Features Plan
Figure Ref	WIE18671-100-GIS-ESSoC2-13.1A
Date	2022
File Location	\\s-inc\swiel\projects\wie18671\100\gr\ec\lessoc2

www.watermangroup.com

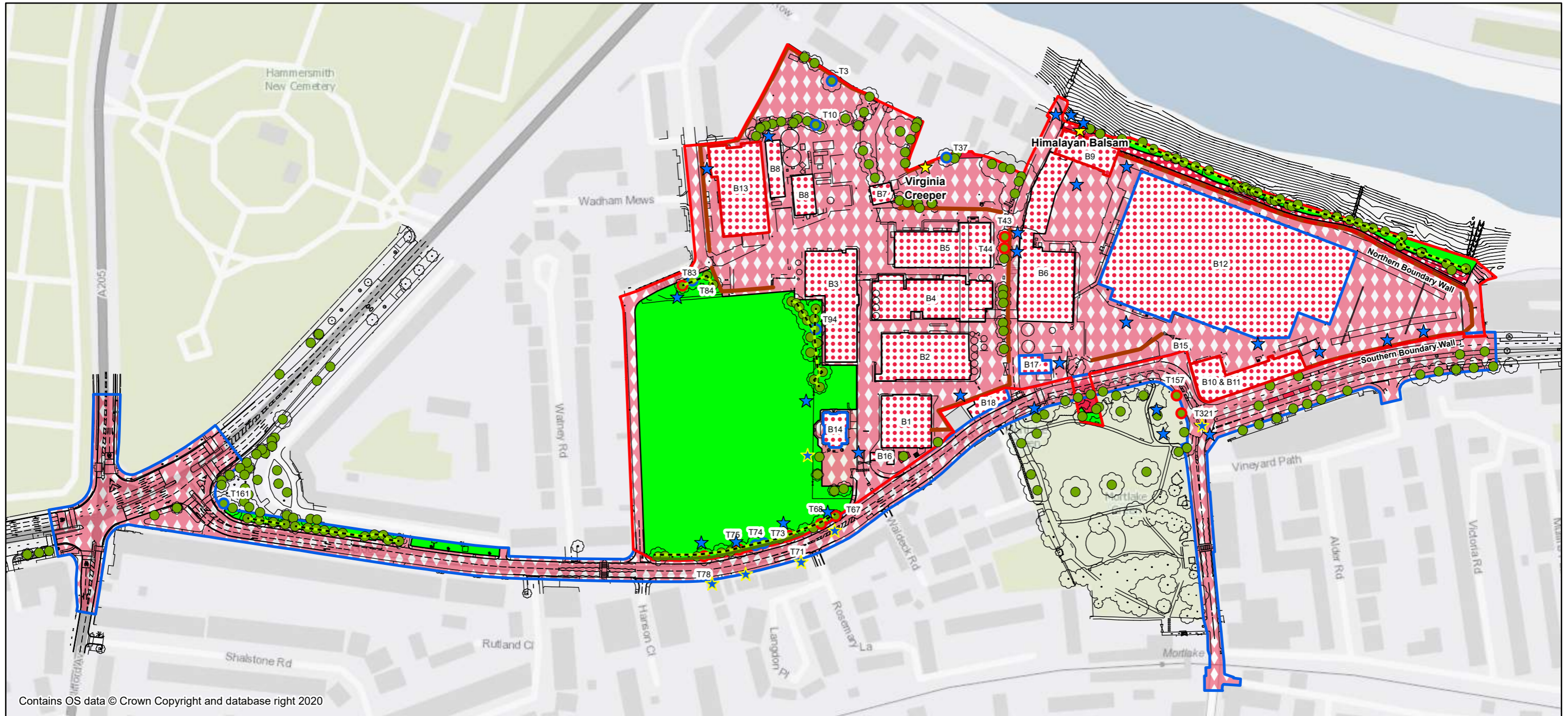


Contains OS data © Crown Copyright and database right 2020

- Planning Application Boundary
- Potential Roosting Features
- Buildings - u1b5 - 97
- Artificial Unvegetated Unsealed Surface - u1c - 17, 80
- Hardstanding - u1b6 - 111
- Modified Grassland - g4 - 64, 66, 75, 76
- Urban Tree - u - 1170
- Line of Trees - w1g6, 76
- Wall - u1e - 68, 80
- Features with Moderate Bat Potential
- Buildings with Moderate Bat Potential
- Buildings with Low Bat Potential



Project Details	WIE18671-100: Stag Brewery
Figure Title	Figure 13.2: Northern Boundary Wall Feature Locations
Figure Ref	WIE18671-100-GIS-ESSoc2-13.2A
Date	2022
File Location	\\s-Incs\wiel\projects\wie18671\100\grlessoc2
	www.watermangroup.com



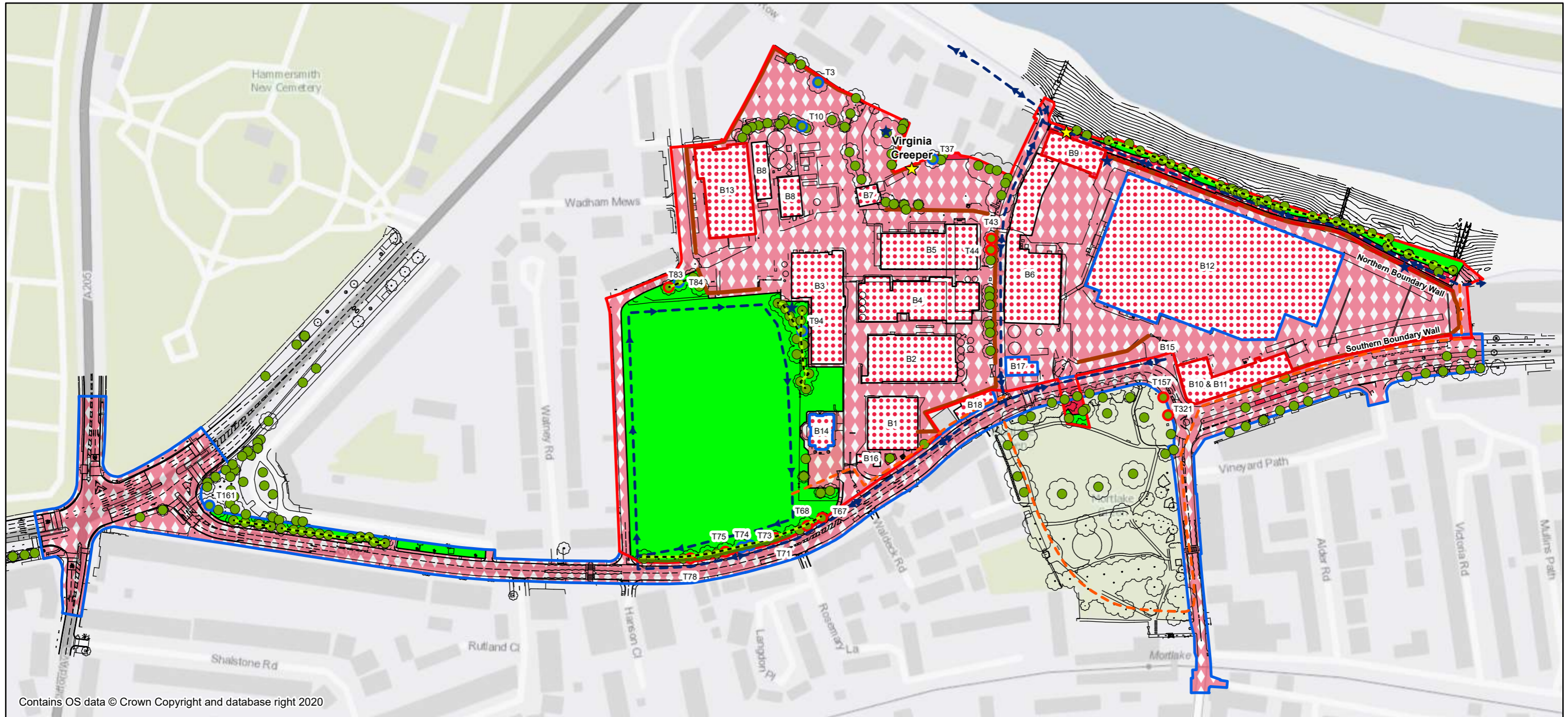
Contains OS data © Crown Copyright and database right 2020

- | | | |
|---|--|---------------------------------------|
| Planning Application Boundary | Artificial Unvegatated Unsealed Surface - u1c - 17, 80 | Trees with Low Bat Roost Potential |
| S278 Works Boundary | Hardstanding - u1b6 - 111 | Urban Tree - u - 1170 |
| July / August 2022 Bat Surveyor Locations | Buildings - u1b5 - 97 | Invasive Species |
| Additional Surveyor Locations in October 2021 (not assessed to be required as part of the July and August 2022 Surveys) | Hedgerow - h2b - 17, 48, 1160 | Buildings with Low Bat Potential |
| Modified Grassland - g4 - 64, 66, 75, 76 | Line of Trees - w1g6, 76 | Buildings with Moderate Bat Potential |
| Ornamental Planting - u - 48, 80, 1160 | Wall - u1e - 68, 80 | Features with Moderate Bat Potential |
| | Trees with Moderate Bat Roost Potential | |



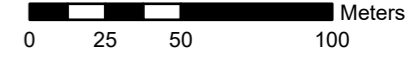
Project Details	WIE18671-100: Stag Brewery
Figure Title	Figure 13.3: Evening Emergence Bat Surveyor Locations
Figure Ref	WIE18671-100-GIS-ESSoC2-13.3A
Date	2022
File Location	\\s-inc\wiel\projects\wie18671\100\grlessoc2

www.watermangroup.com

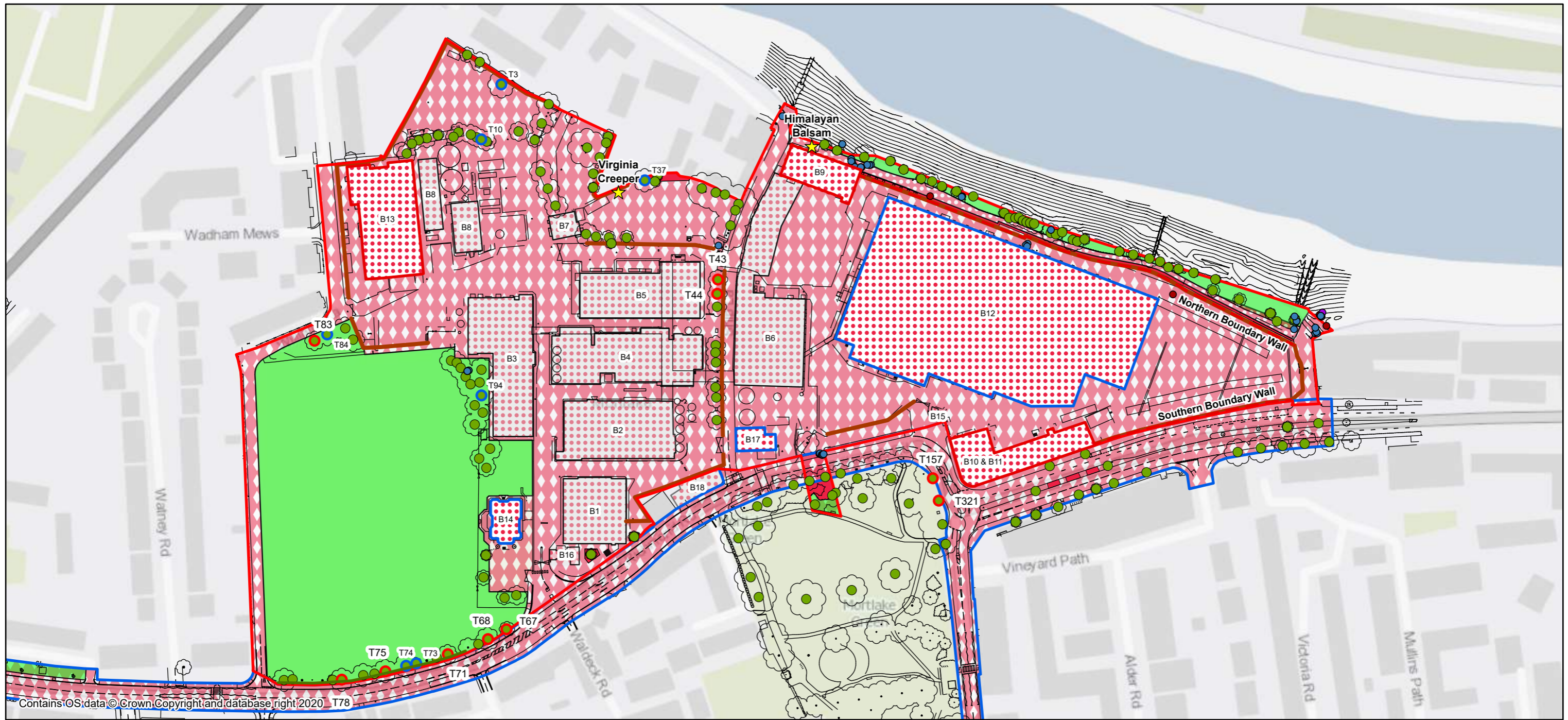


Contains OS data © Crown Copyright and database right 2020

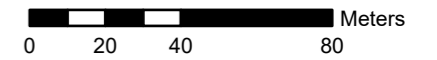
- | | | |
|--|---|---------------------------------------|
| Planning Application Boundary | Hedgerow - h2b - 17, 48, 1160 | Features with Moderate Bat Potential |
| S278 Works Boundary | Trees with Moderate Bat Roost Potential | Buildings with Moderate Bat Potential |
| Buildings - u1b5 - 97 | Trees with Low Bat Roost Potential | Buildings with Low Bat Potential |
| Artificial Unvegetated Unsealed Surface - u1c - 17, 80 | Urban Tree - u - 1170 | Bat Activity Transect |
| Ornamental Planting - u - 48, 80, 1160 | Wall - u1e - 68, 80 | July / August 2022 |
| Modified Grassland - g4 - 64, 66, 75, 76 | Line of Trees - w1g6, 76 | October 2021 |
| Hardstanding - u1b6 - 111 | Invasive Species | Bat Detector Locations |



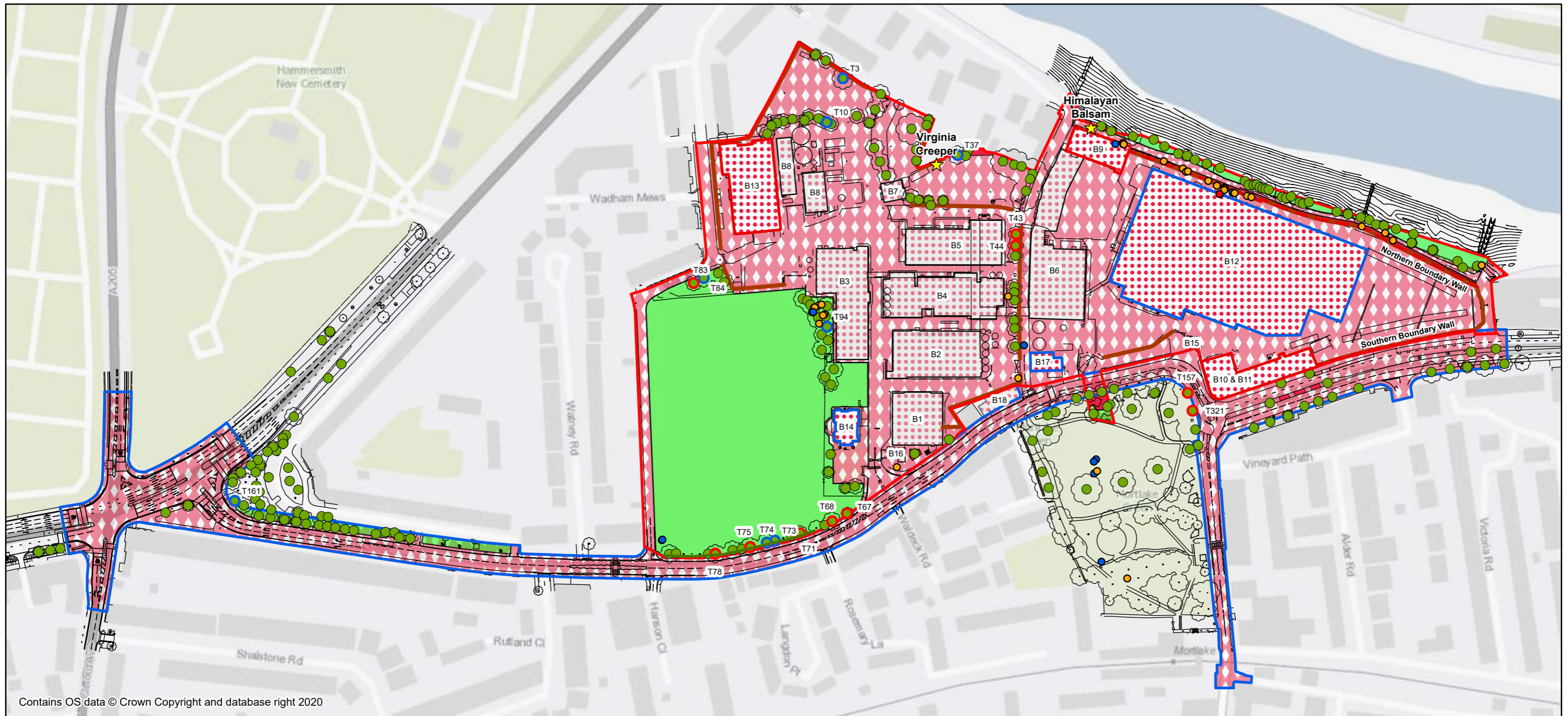
Project Details	WIE18671-100: Stag Brewery
Figure Title	Figure 13.4: Bat Activity Survey Transect and Static Detector Locations
Figure Ref	WIE18671-100-GIS-ESSoC2-13.4A
Date	2022
File Location	\\s-inc\wiel\projects\wie18671\100\grlessoc2
	www.watermangroup.com



- | | | |
|--|--|---------------------------------------|
| Planning Application Boundary | Ornamental Planting - u - 48, 80, 1160 | Trees with Low Bat Roost Potential |
| S278 Works Boundary | Artificial Unvegetated Unsealed Surface - u1c - 17, 80 | Urban Tree - u - 1170 |
| Dusk Bat Activity | Buildings - u1b5 - 97 | Buildings with Low Bat Potential |
| Pipistrellus pipistrellus | Hardstanding - u1b6 - 111 | Buildings with Moderate Bat Potential |
| Pipistrellus pygmaeus | Hedgerow - h2b - 17, 48, 1160 | Features with Moderate Bat Potential |
| Plecotus auritus | Wall - u1e - 68, 80 | Invasive Species |
| Modified Grassland - g4 - 64, 66, 75, 76 | Trees with Moderate Bat Roost Potential | |

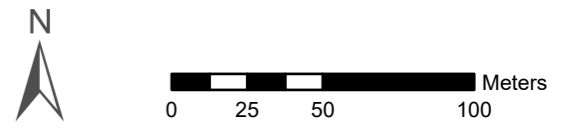


Project Details	WIE18671-100: Stag Brewery
Figure Title	Figure 13.5: Activity Survey Results October 2021
Figure Ref	WIE18671-100-GIS-ESSoc2-13.5A
Date	2022
File Location	\\s-inc\wiel\projects\wie18671\100\grlessoc2

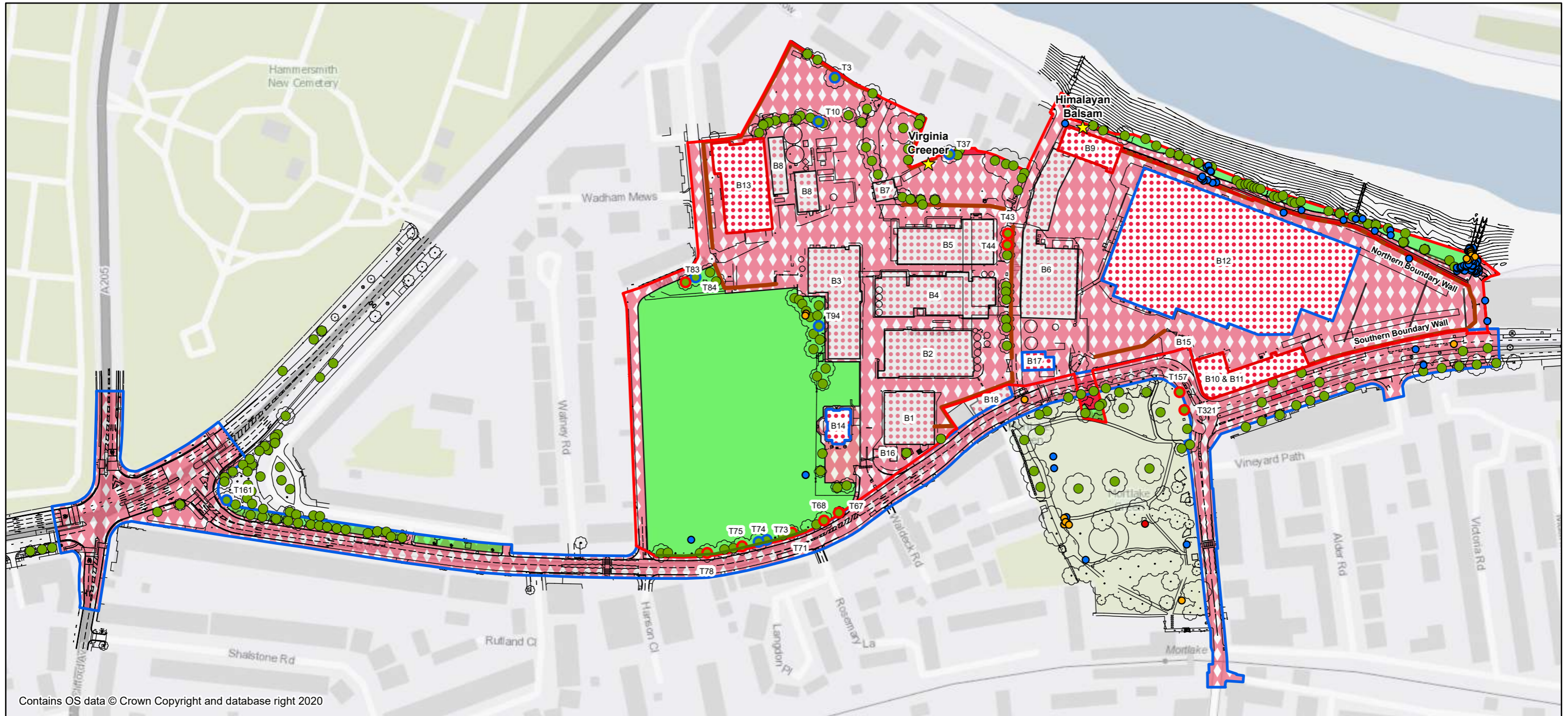


Contains OS data © Crown Copyright and database right 2020

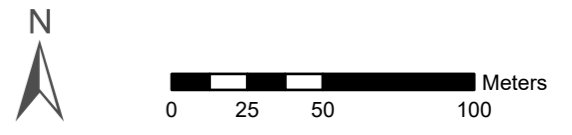
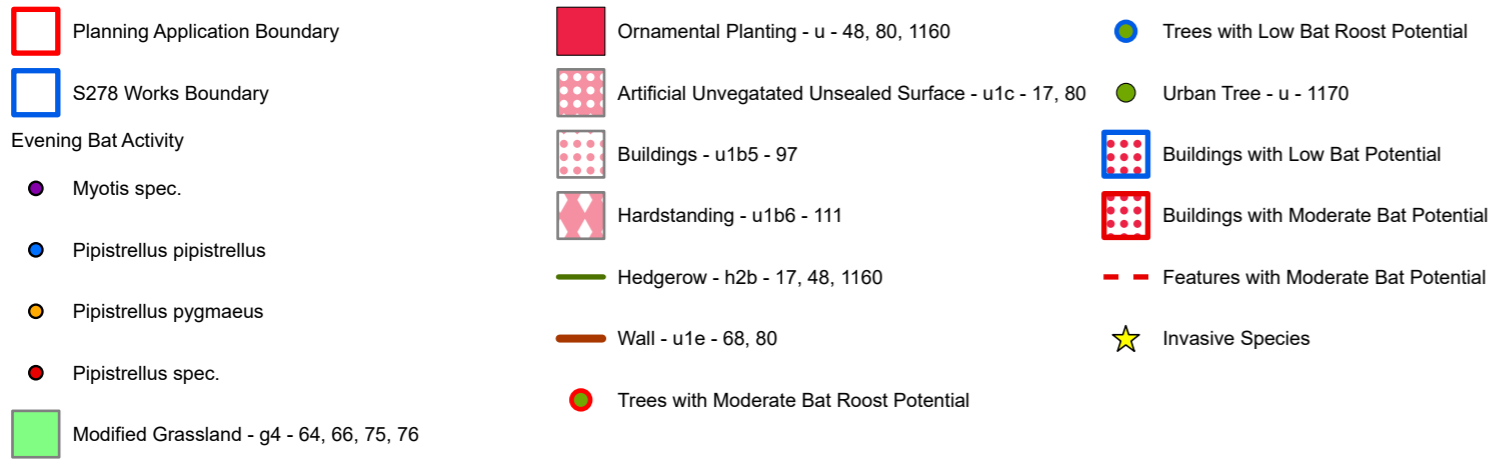
- | | | |
|--|--|---------------------------------------|
| Planning Application Boundary | Ornamental Planting - u - 48, 80, 1160 | Trees with Low Bat Roost Potential |
| S278 Works Boundary | Artificial Unvegatated Unsealed Surface - u1c - 17, 80 | Urban Tree - u - 1170 |
| Evening Bat Activity | Buildings - u1b5 - 97 | Buildings with Low Bat Potential |
| Myotis spec. | Hardstanding - u1b6 - 111 | Buildings with Moderate Bat Potential |
| Pipistrellus pipistrellus | Hedgerow - h2b - 17, 48, 1160 | Features with Moderate Bat Potential |
| Pipistrellus pygmaeus | Wall - u1e - 68, 80 | Invasive Species |
| Pipistrellus spec. | Trees with Moderate Bat Roost Potential | |
| Modified Grassland - g4 - 64, 66, 75, 76 | | |



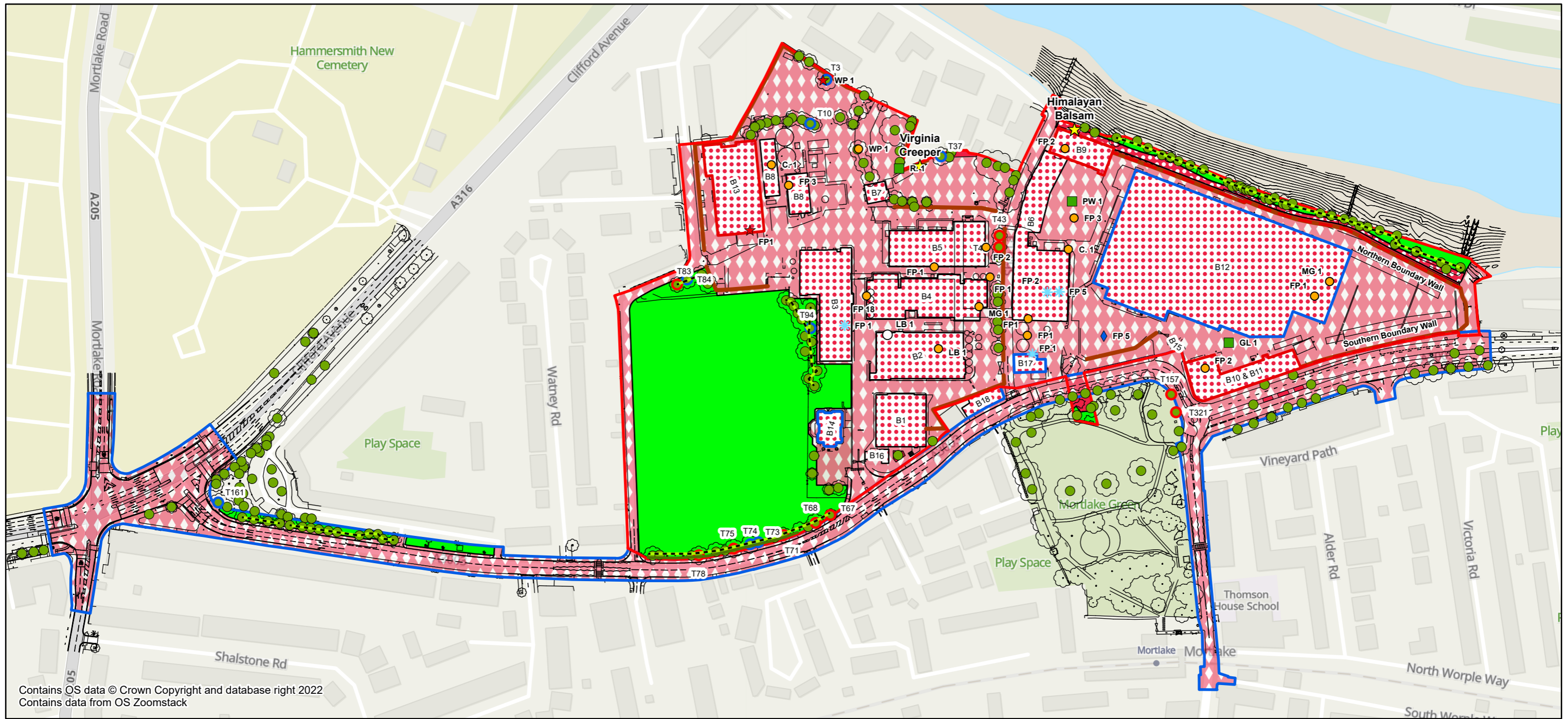
Project Details	WIE18671-100: Stag Brewery
Figure Title	Figure 13.6: Evening Bat Activity Survey Results (July 2022)
Figure Ref	WIE18671-100-GIS-ESSoC2-13.6A
Date	2022
File Location	\\s-incs\wiel\projects\wie18671\100\grlessoc2



Contains OS data © Crown Copyright and database right 2020

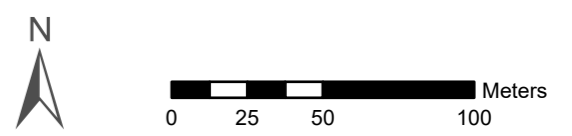


Project Details	WIE18671-100: Stag Brewery
Figure Title	Figure 13.7: Evening Bat Activity Survey Results (August 2022)
Figure Ref	WIE18671-100-GIS-ESSoC2-13.7A
Date	2022
File Location	\\s-inc\wiel\projects\wie18671\100\grlessoc2



Contains OS data © Crown Copyright and database right 2022
 Contains data from OS Zoomstack

- | | | | |
|--|------------------------------------|---|---------------|
| Planning Application Boundary | Hardstanding - u1b6 - 111 | Trees with Moderate Bat Roost Potential | Displaying |
| S278 Works Boundary | Wall - u1e - 68, 80 | Buildings with Low Bat Potential | Flying Around |
| Modified Grassland - g4 - 64, 66, 75, 76 | Hedgerow - h2b - 17, 48, 1160 | Buildings with Moderate Bat Potential | Nest |
| Ornamental Planting - u - 48, 80, 1160 | Line of Trees - w1g6, 76 | Features with Moderate Bat Potential | Singing |
| Artificial Unvegetated Unsealed Surface - u1c - 17, 80 | Urban Tree - u - 1170 | Invasive Species | Visual |
| Buildings - u1b5 - 97 | Trees with Low Bat Roost Potential | Bird Survey | |
| | | Calling | |



Project Details	WIE18671-100: Stag Brewery
Figure Title	Figure 13.8: Peregrine Falcon and Breeding Bird Survey Map - 10th June 2022
Figure Ref	WIE18671-100-GIS-ESSoC2-13.8A
Date	2022
File Location	\\s-incs\wiel\projects\wie18671\100\grlessoc2 www.watermangroup.com