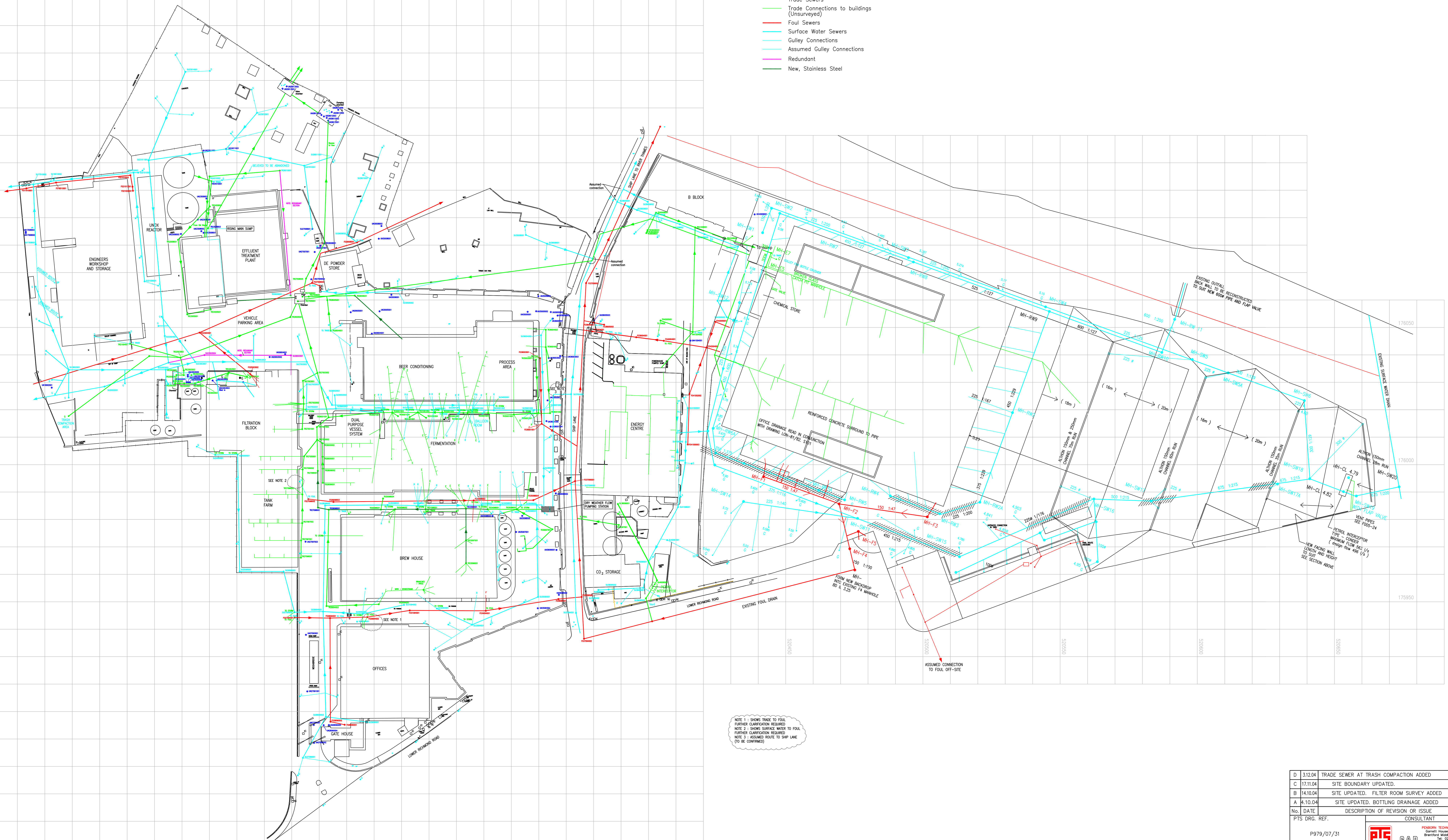


- LEGEND**
- Trade Sewers
 - Trade Connections to buildings (Unsurveyed)
 - Foul Sewers
 - Surface Water Sewers
 - Gully Connections
 - Assumed Gully Connections
 - Redundant
 - New, Stainless Steel



D	11.10.04	TRADE SEWER AT TRASH COMPACTION ADDED	TR	ACJ	
C	17.11.04	SITE BOUNDARY UPDATED.	TR	ACJ	
B	14.10.04	SITE UPDATED. FILTER ROOM SURVEY ADDED	TR	ACJ	
A	4.10.04	SITE UPDATED. BOTTLING DRAINAGE ADDED	TR	ACJ	
No.	DATE	DESCRIPTION OF REVISION OR ISSUE	BY	CHK.	PROJ. ENG. APPROVAL

PTS ORG. REF.	CONSULTANT	PPTS PROJ. REF.
P979/07/31	 RSE BAD CONSULTANT 1000 House, Millbrook Road Brentford, Middlesex, TW8 9GL Tel: 020-8996-7979 Fax: 020-8996-1621 E-mail: p979@btinternet.com	

ESR	DESIGNED	PROJ.
DRAWN	CHECKED	BID
SCALE: 1:500 @ A0	 ANHEUSER-BUSCH COMPANIES	
DATE	SITE PLAN SHOWING EXIST. SERVICES ALL SERVICES	
KEY PLAN		

BLDG. NAME	BLDG. No.			
ENGINEER APPROVED	OWNER APPROVED			
PLANT	BLDG. No.	Div.	DWG. No.	REV.
STAG	O	M	1016	D