

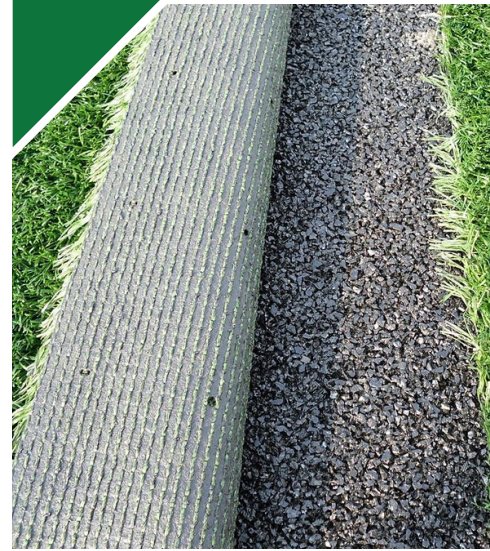
5.7 Hard Landscape Precedent Images



Small block setts



Muga - Pitch Treatment



3G Pitch Treatment



Resin Bound Aggregate



Artificial Stone Flag Paving



Hot Rolled Asphalt



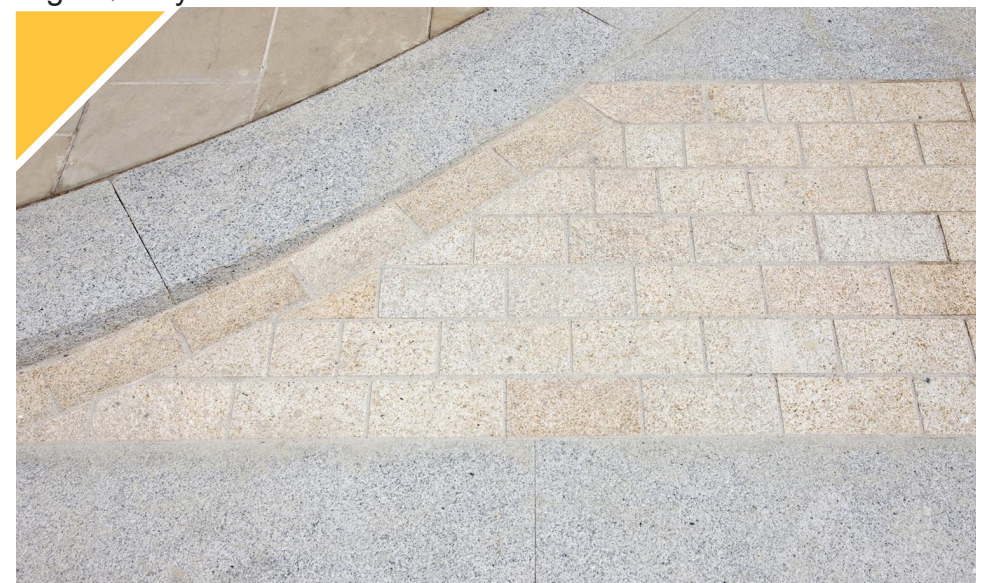
High Quality Pre-Cast Concrete



Feature Mix Stone Paving



High Quality Stone Paving



High Quality Stone Paving

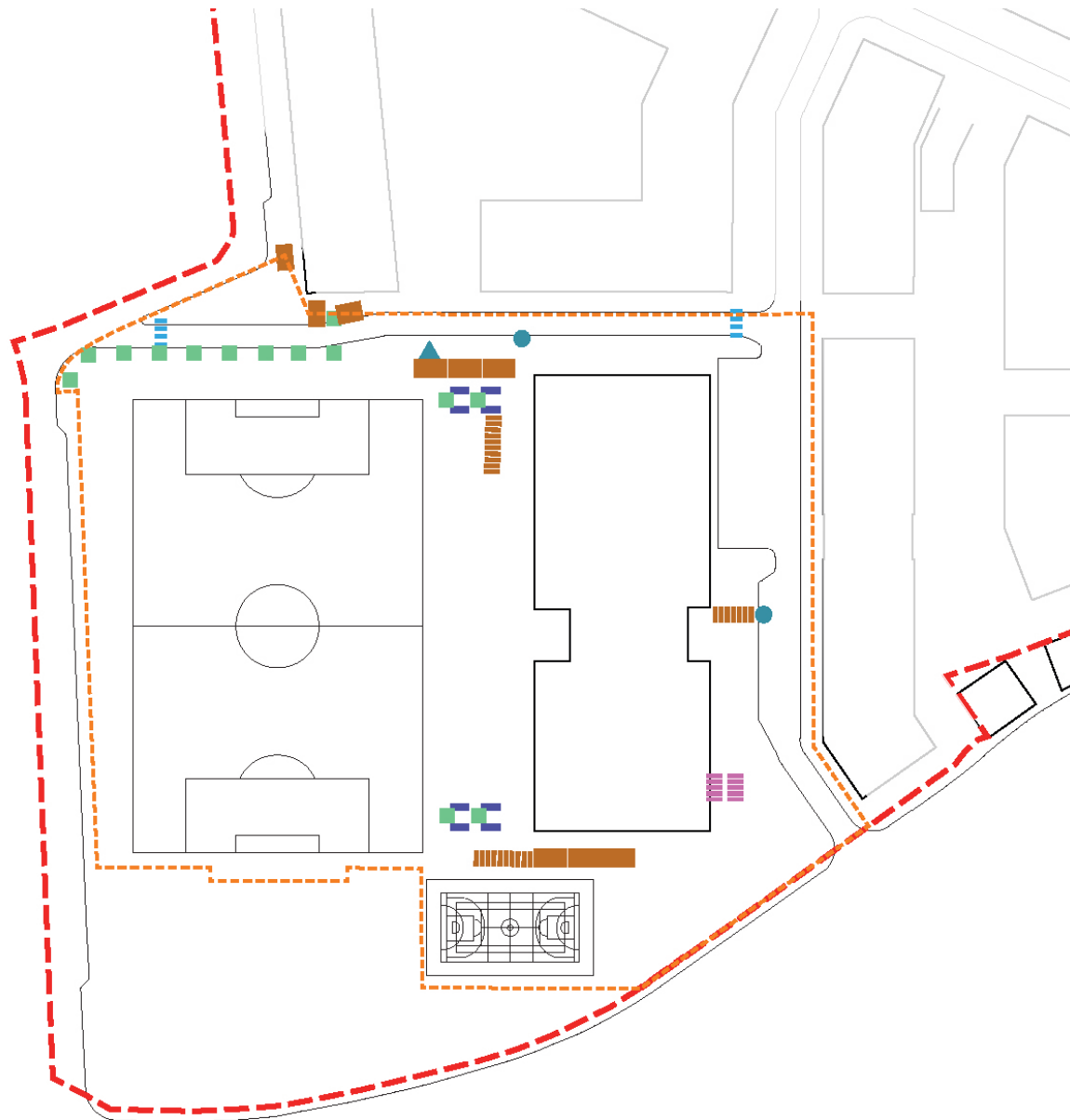
5.8 Street Furniture Strategy

Policy 16 of the Local Plan(2018) requires landscape design and materials to be of high quality and compatible with the surrounding landscape and character.

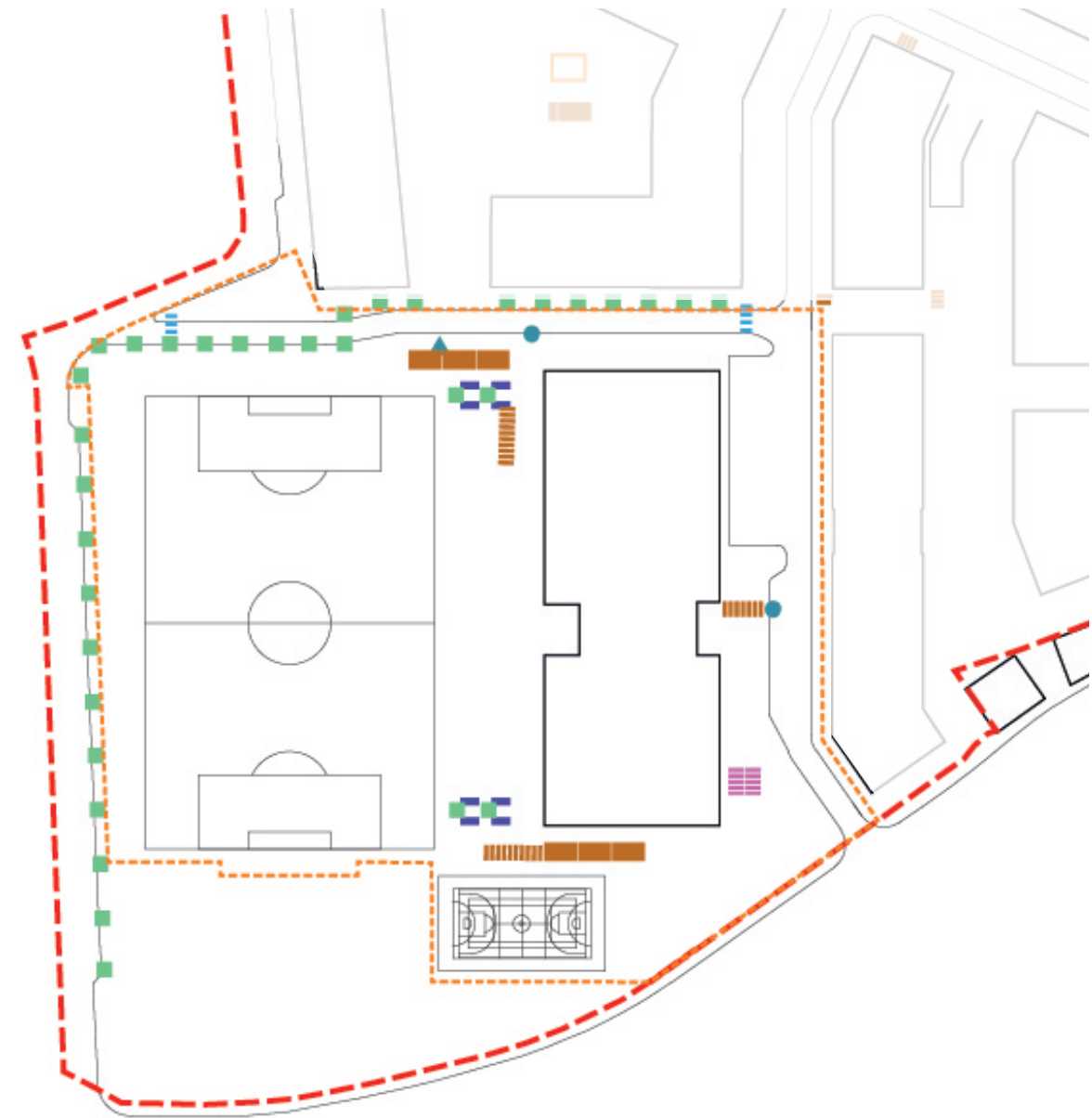
The selection of materials and finishes aims to improve the quality of the public landscape and school design, and is intended to integrate the school site into the broader context of the overall site as well as Mortlake.

Subtle changes of materials and patterns will be used to differentiate between public and private functions, vehicular and pedestrian circulation and to define different character areas. Materials are selected for durability and functionality as well as appearance. Where feasible, we will utilise recycled and recyclable materials, and techniques.

- Concrete/timber benches
- Resin bound gravel tree pit
- Bins
- Bollards
- Cycle stands
- Cycle stands in bin & cycle store
- Two-tier cycle rack shelter
- School Application Boundary
- Application A Site Boundary

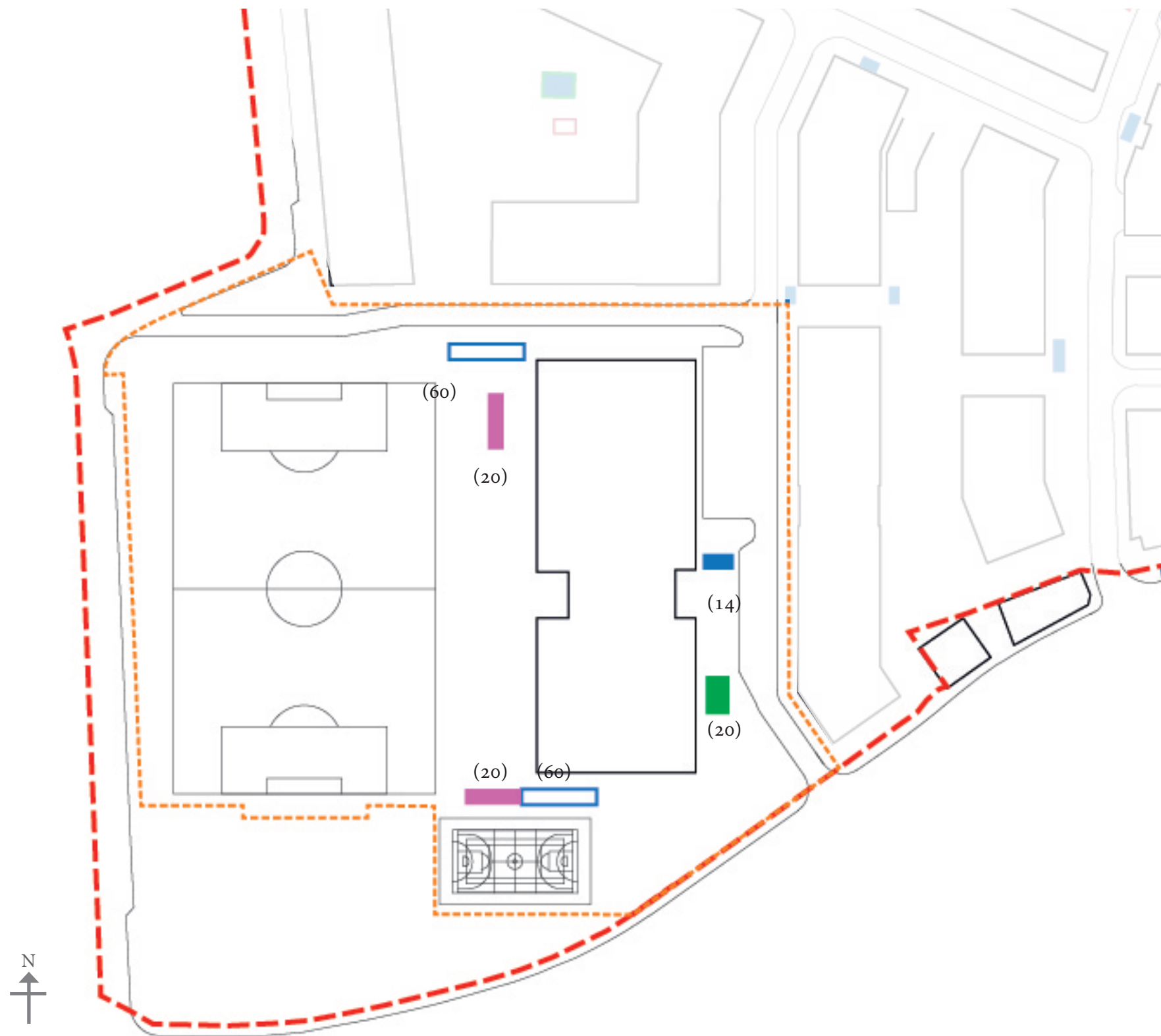


Street Furniture Interim



Street Furniture Final

5.8 Cycle Parking Strategy for School (Interim and final)



	No. of New Parking (Long Stay)		No. of New Parking (Short Stay)	
	Required	Provided	Required	Provided
School	165	180	13	14

- Short stay parking - Sheffield stand
- Long stay parking - Two tier cycle store
- Long stay parking - Sheffield stand (within school fence)
- Long stay parking - Two tier cycle shelter (within school fence)
- Long stay parking in locked bin and cycle store
- - - Application A Site Boundary
- - - School Application Boundary

Precedent images



Concrete benches



Bins



Bollards



Manchester Cast Bollard / SFD560

Product Description

The Manchester Cast Iron Bollard has a traditional and contemporary design which makes it popular choice with Architects and Councils. The Cast Iron Bollard adds a classic look to any high street, while providing strength.

Dimensions

Length 1300mm.
Diameter 230mm.
Manufactured from Cast Iron, Finished in black gloss.
Root Fixed.



Call our Sales Team: 01625 879442
Email: sales@streetfurnituredirect.co.uk
Web: www.streetfurnituredirect.co.uk



Resin bound gravel tree pit



Tree grilles



Cycle stand



Timber benches

5.9 Soft Landscape Strategy - Trees

Policy 16 of the Local Plan requires the protection of existing trees and the provision of new trees, shrubs and other vegetation of landscape significance that complement existing, or create new, high quality green areas, which deliver amenity and biodiversity benefits. The proposed soft landscape strategy is comprised by the following tree species and landscape typologies.

1. Retained trees: on-going husbandry and canopy management of the existing trees, alongside a new augmented tree planting to emphasise and enhance the amenity impact of any blocks of planting.
2. Structural Street Tree Planting: along the streets, tree planting is to be predominantly native species with columnar canopies, allowing the trees to be situated in close proximity to the building massing & thereby providing shade and shelter from wind and giving seasonal interest in leaves, bark and form. Interspersed softscape bays and corners are populated with clusters that unify the street scene and define their own character.

3. Augmented tree planting in softscape areas throughout the school and wider masterplan: these are predominantly of a smaller habit, native species and mixed forms with some multi-stem species that have good seasonal qualities, suited to the spaces and anticipated light levels.
4. Specimen trees: will be interspersed throughout the development in selected parts of pedestrianised areas and in locations which present a good opportunity to host and display trees of particular merit.
5. A dense screen of trees has been provided along the western edge of the sports pitch to shield nearby residents from glare from the pitch floodlighting – as per Sports England and Football Association recommendations. An agreement with a local sports club is currently being negotiated to ensure the high quality sports facilities benefit as large a proportion of the community as possible.

Images of the proposed trees are shown on the next pages.

- Specimen Trees - Mixed
(Clearstem: 2.5m | H:5-10m)
- Native Ornamentals - Mixed
(Clearstem: 2M | H:4-7M)
- Hardy Native Columnar Street Trees
(SM | Clearstem: 2.5m | H:5-7m)
- Retained Trees
- School Application Boundary
- Application A Site Boundary



Tree Planting Interim



Tree Planting Final