

**GROUND FLOOR**

**FLAT 1**  
2 BEDROOMS  
NET INTERNAL FLOOR AREA 106.5m<sup>2</sup>  
(REQUIRED - 60m<sup>2</sup>)

KITCHEN / LIVING / DINING 31m<sup>2</sup>  
(REQUIRED - 24m<sup>2</sup>)

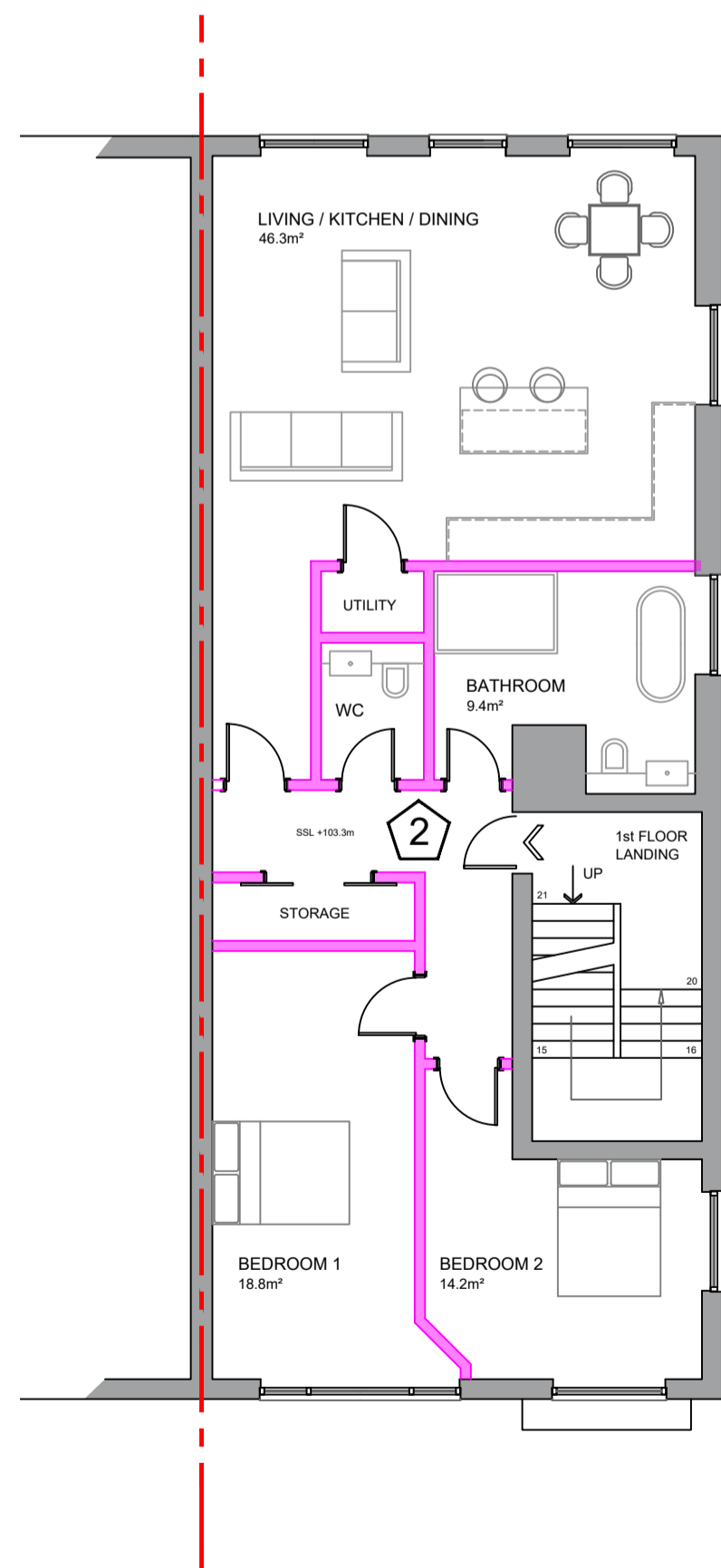
BEDROOM 1 18.8m<sup>2</sup>  
(REQUIRED - 12m<sup>2</sup>)

BEDROOM 2 9.3m<sup>2</sup>  
(REQUIRED - 7m<sup>2</sup>)

(ALL 'REQUIRED' AREAS TAKEN FROM RICHMOND UPON THAMES SUPPLEMENTARY PLANNING DOCUMENT RESIDENTIAL DEVELOPMENT STANDARDS ADOPTED MARCH 2010)



PROPOSED GROUND FLOOR PLAN 1:100



**FIRST FLOOR**

**FLAT 2**  
2 BEDROOMS  
NET INTERNAL FLOOR AREA 111m<sup>2</sup>  
(REQUIRED - 60m<sup>2</sup>)

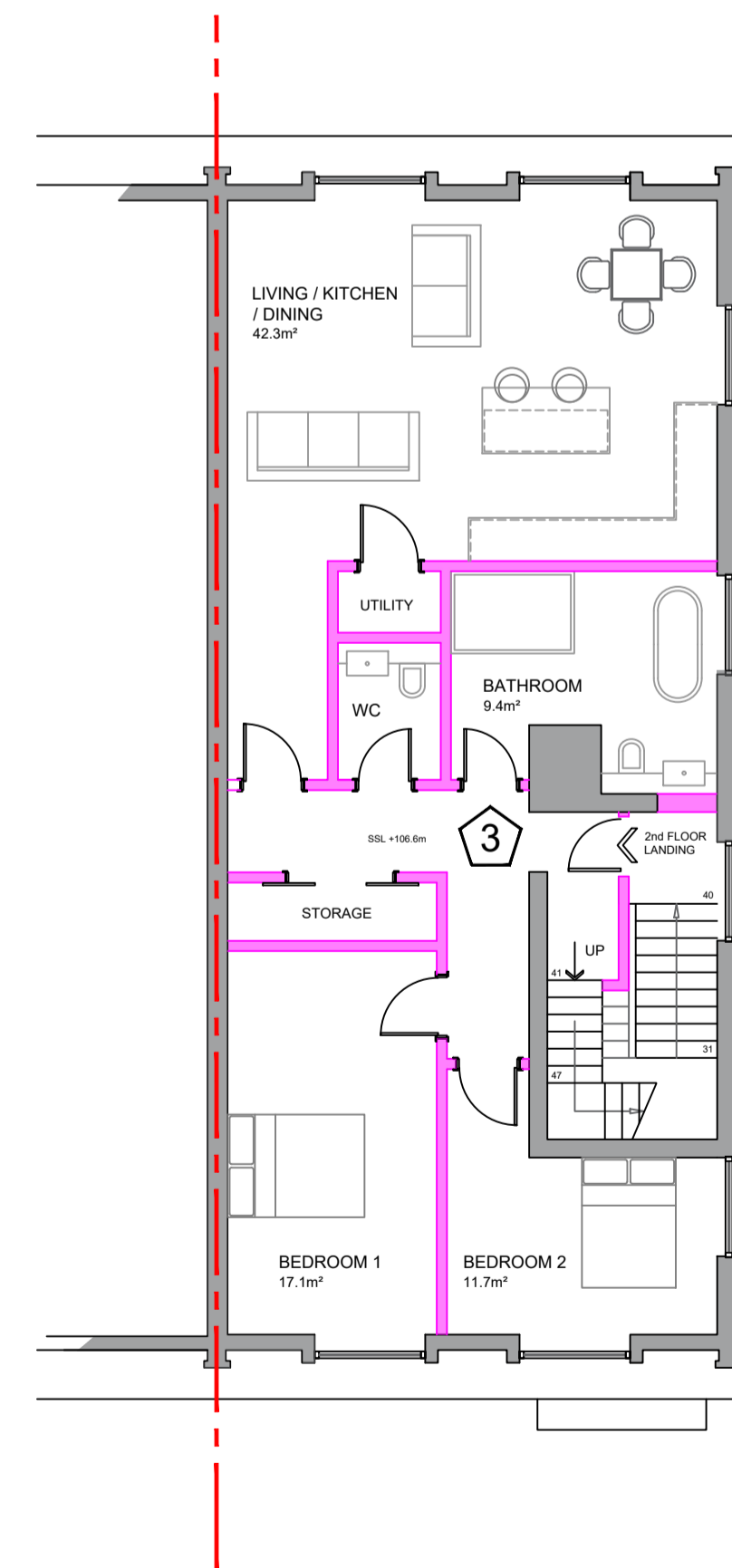
KITCHEN / LIVING / DINING 36.4m<sup>2</sup>  
(REQUIRED - 24m<sup>2</sup>)

BEDROOM 1 18.8m<sup>2</sup>  
(REQUIRED - 12m<sup>2</sup>)

BEDROOM 2 14.2m<sup>2</sup>  
(REQUIRED - 7m<sup>2</sup>)

(ALL 'REQUIRED' AREAS TAKEN FROM RICHMOND UPON THAMES SUPPLEMENTARY PLANNING DOCUMENT RESIDENTIAL DEVELOPMENT STANDARDS ADOPTED MARCH 2010)

PROPOSED FIRST FLOOR PLAN 1:100



**SECOND & THIRD FLOORS**

**FLAT 3**  
3 BEDROOMS  
NET INTERNAL FLOOR AREA 113.6m<sup>2</sup>  
(REQUIRED - 70m<sup>2</sup>)

KITCHEN / LIVING / DINING 42.3m<sup>2</sup>  
(REQUIRED - 24m<sup>2</sup>)

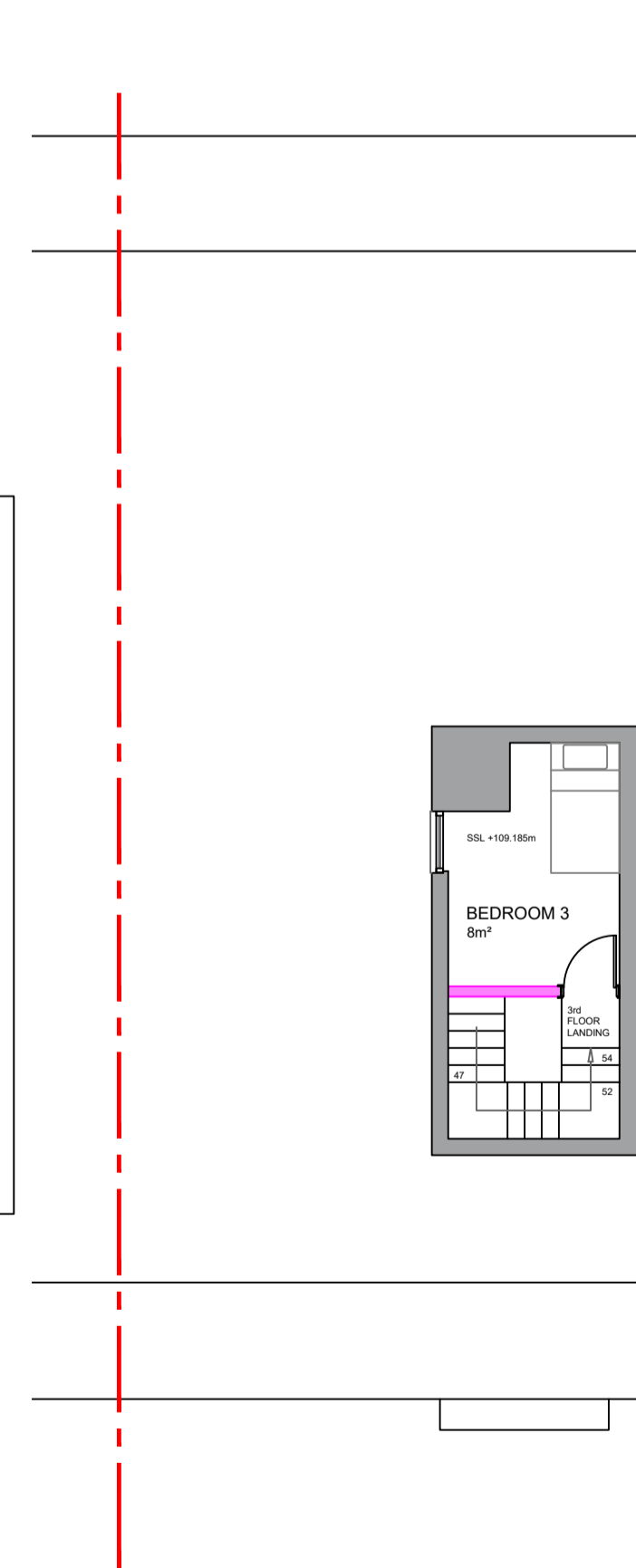
BEDROOM 1 17.1m<sup>2</sup>  
(REQUIRED - 12m<sup>2</sup>)

BEDROOM 2 11.7m<sup>2</sup>  
(REQUIRED - 7m<sup>2</sup>)

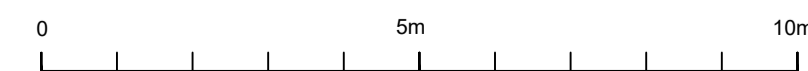
BEDROOM 3 8m<sup>2</sup>  
(REQUIRED - 7m<sup>2</sup>)

(ALL 'REQUIRED' AREAS TAKEN FROM RICHMOND UPON THAMES SUPPLEMENTARY PLANNING DOCUMENT RESIDENTIAL DEVELOPMENT STANDARDS ADOPTED MARCH 2010)

PROPOSED SECOND FLOOR PLAN 1:100



PROPOSED THIRD FLOOR PLAN 1:100



VICTORIA PAGE ARCHITECTURE  
07770837008  
victoriapagearchitect@gmail.com

34 CANDLER MEWS  
TWICKENHAM  
TW1 3JF

MR C LEGG & MR M HUGHES

PROPOSED OUTLINE PLANS 1:100 @ A1

DRAWING N°: 34CM\_002

21/08/23 VP