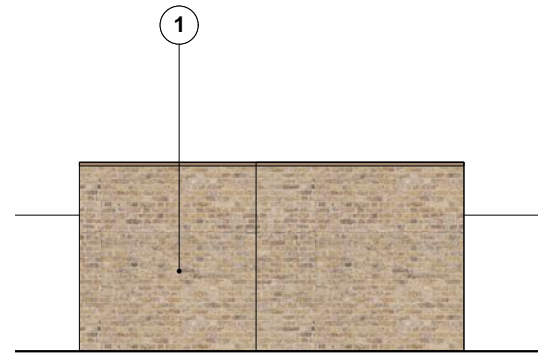
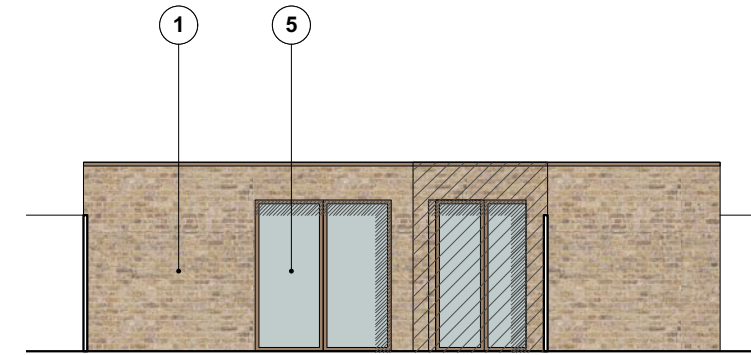


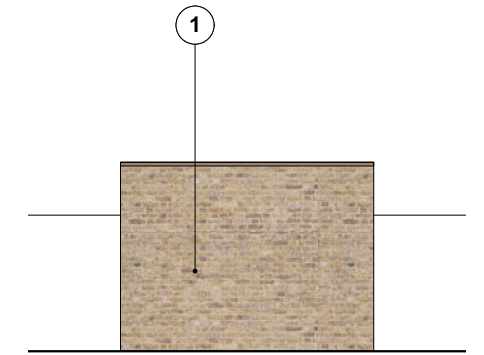
OFFICE NORTH ELEVATION



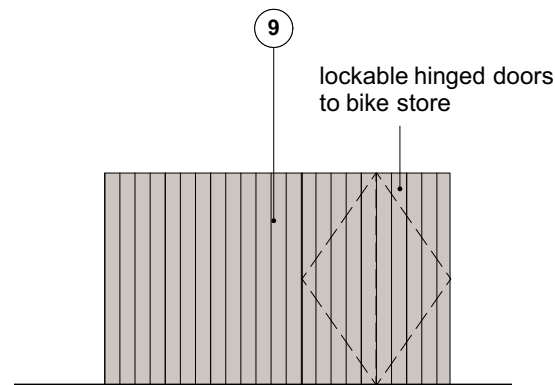
OFFICE EAST ELEVATION



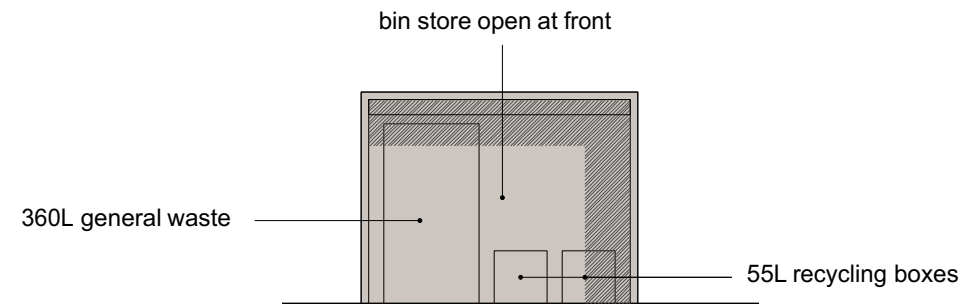
OFFICE SOUTH ELEVATION



OFFICE WEST ELEVATION



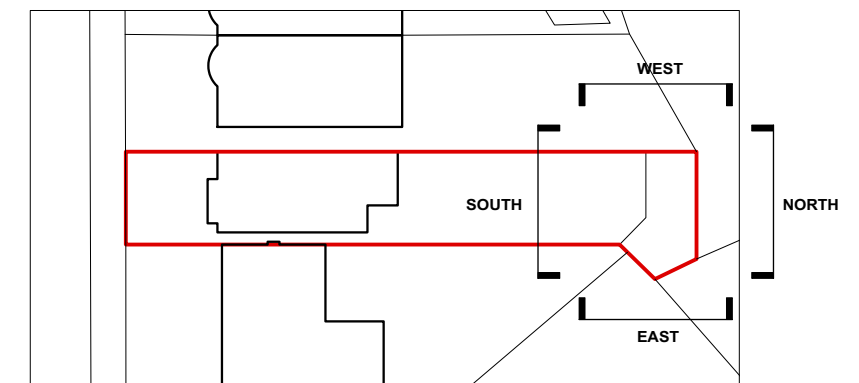
**BIN/BIKE STORE SIDE ELEVATION
(facing garden) 1:50**



**BIN/BIKE STORE FRONT ELEVATION
(facing house) 1:50**

KEY

- 1. BUFF STOCK BRICK (WEINERBERGER ANGLESEY WEATHERED BUFF OR SIMILAR)
- 2. BUFF STOCK BRICK IN SOLDIER COURSING (WEINERBERGER ANGLESEY WEATHERED BUFF OR SIMILAR)
- 3. BUFF STOCK BRICK IN DOG TOOTH COURSING (WEINERBERGER ANGLESEY WEATHERED BUFF OR SIMILAR)
- 4. VM ZINC PIGMENTO RED, STANDING SEAM ROOF WITH CONCEALED GUTTERS
- 5. ALUMINIUM FRAMES TO WINDOWS, PATIO DOORS, AND ROOFLIGHTS TO MATCH ZINC (RAL 8011 OR SIMILAR)
BRICK WINDOW REVEALS TO BE 200mm DEEP
- 6. OBSCURE & UNOPENABLE GLAZING, ALUMINIUM FRAMES TO WINDOWS, TO MATCH ZINC (RAL 8011 OR SIMILAR)
- 7. DARK TIMBER FRONT DOOR
- 8. DARK STAINED TIMBER FENCING WITH TRELIS TO UPPER PART
- 9. DARK STAINED TIMBER BIN / BIKE STORE



<p>Revisions</p> <p>01.11.23 - REV-A - bin/bike store elevations updated (bike store relocated to front garden)</p>	<p>Copyright ADD/UK Limited</p> <p>No implied license exists. Do not scale this drawing. All dimensions to be checked on site by the contractor and such dimensions to be their responsibility. All work must comply with relevant British Standards and Building Regulations requirements. Drawing errors and omissions to be reported to the architect.</p>	<p>Scale 1:100 @ A3</p> <p>Drawn by SD</p> <p>Job Number 0075</p>	<p>Date October 2021</p> <p>Checked by DW</p> <p>Status PLANNING</p>	<p>Project LAND BETWEEN 18 & 20 VICARAGE ROAD, KT1 4ED</p> <p>Drawing Garden Office & Bin Store Elevations</p>	<p>add architecture development + design</p> <p>Drawing No. & Revision 0075_P24A</p>
---	---	--	---	--	--