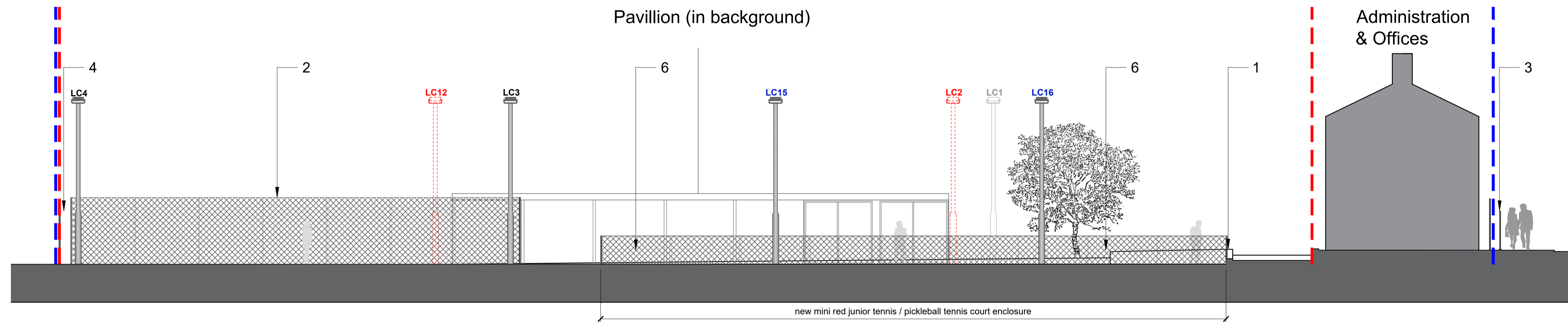
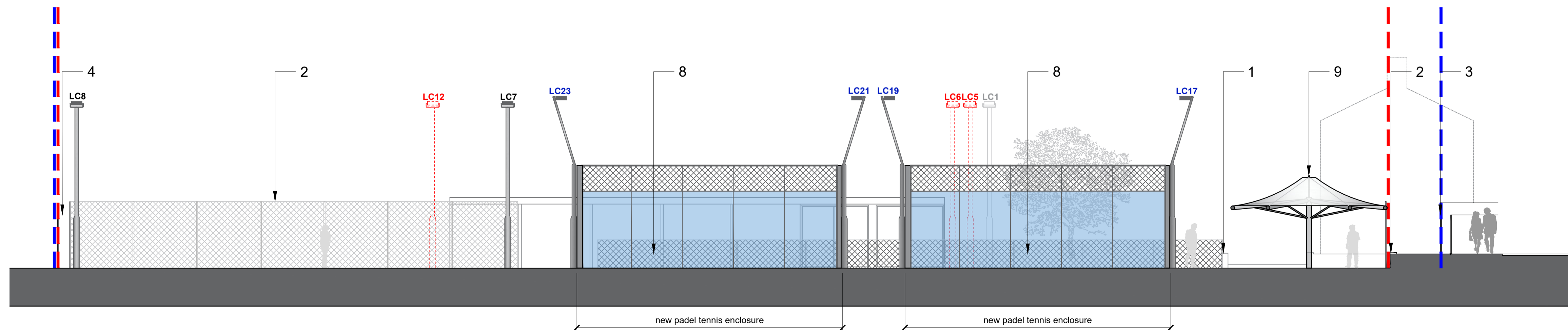


1 SECTION
225 Site Section CC SCALE 1:100



2 SECTION
225 Site Section AA SCALE 1:100



3 SECTION
225 Site Section BB SCALE 1:100

KEY:

Proposed Boundaries and Fencing

1. Low level concrete retaining wall
2. Chain link fencing (2.6m high)
3. Chain link fencing (2.6m high) with low level timber boarding to the front
4. Chain link fencing (2.6m high) with metal pallisade fencing (2m high) to the front
5. Chain link fencing (2.6m high) over low level concrete retaining wall (0.4m high)
6. Proposed low level (1.1m high) chain link fencing around mini red junior /pickleball tennis courts perimeter
7. Proposed removable netting (1.8m) high
8. Proposed Padel Tennis Court enclosure; Both ends of the Padel Tennis Courts and first 4 metres of each end of the side walls in toughened glass 2m wide x 3m high panels. The end walls and the first 2 metres of each end of the side walls to have 1 metre high mesh panels over glazing. The remainder of the side walls, including gates, to be in wire mesh 3m high panels. All metalwork galvanized and powder coated black.
9. Proposed tensile fabric canopy on metal frame support

LC - Metal lighting column

--- Site boundary

--- Ownership boundary

