

Tennis lighting
 Luminaire: Galaxy-XMC-
 Qty: 6
 Mounting Height: 6.8m affl
 Calc Summary: PPA 500 lux @0.7Uo requirement
 TPA 400 lux @0.6Uo

In order to produce the design set out herein ("the Design") Exled Ltd has relied solely on the documents and information supplied by you (if supplied). By your acceptance and/or use of the design you agree to warrant the at information in the Customer Documents is correct in all respects and notwithstanding the fact that Exled Ltd Lighting department has made a commercially reasonable endeavour to ensure the information set forth herein are provided to you on an 'as is' basis and Exled makes no warranty or representation regarding with respect thereto. AS SUCH, EXLED LTD HEREBY EXPRESSLY DISCLAIMS ANY AND WARRANTIES, WHETHER EXPRESS, IMPLIED OR OTHERWISE, INCLUDING WITHOUT LIMITATION, THE IMPLIED WARRANTIES OF MERCHANTABILITY, FITNESS FOR A PARTICULAR PURPOSE AND NON-INFRINGEMENT RESPECTING THIS PROPOSAL OR ANY OF ITS CONTENTS. Exled Ltd accepts no liability for any loss (however caused) sustained by you or any of your employees, agents, representatives, affiliates or third parties as a result of any error or omission in this proposal.



Rev	Date	Description

Revisions

Drawn By: Mark Ruthers
Checked By:
Date: 15/08/2023
Scale:

The Lensbury
Tennis

Galaxy XMC Sports Floodlight

Product Datasheet



Datasheet

Overview

Technical Data

Dimensions

Imagery

Contact us



Rev	Date	Description

Revisions

Drawn By: Mark Ruthers
Checked By:
Date: 15/08/2023
Scale:

**The Lensbury
Tennis**

DS_GALAXY-420-630-840-1060-1260-1600-XMC

The Galaxy XMC Range comprises high power LED floodlights with aimable heads specifically designed to achieve uniformity on the pitch. Precision optics for very high lumen efficiency, combined with excellent thermal management and a corrosion resistant coating, make the Galaxy XMC range a class leading product.

Features:

- Philips LEDs
- Unique Precision Optics
- Wide Choice of beam angles
- 5 Year Warranty
- Corrosion proof coating

5 year warranty

The Galaxy XMZ 420-1600W range is the latest generation high power LED floodlight, with a circuit watt efficiency up to +140 lumens per watt. However the true efficiency comes from almost zero extraneous light. All the lumens are delivered on the pitch. = Zero light pollution. The externally rated driver can be remotely mounted if required. Robust construction and corrosion proof coating make this fixture ideal for harsh weather climates.



   **LM-79** 

For more information about the product featured in this datasheet please contact the experts at Exled. Call 01453 756 361, email sales@exled.co.uk or visit exled.co.uk



Datasheet

Overview

Technical Data

Dimensions

Imagery

Contact us



Rev	Rev Description	Rev Date

Revisions

Drawn By: Mark Ruthers
Checked By:
Date: 15/08/2023
Scale:

The Lensbury
Tennis

DS_GALAXY-420-630-840-1060-1260-1600-XMC

Product Code	Galaxy XMC 420	Galaxy XMC 630	Galaxy XMC 840	Galaxy XMC 1260	Galaxy XMC 1600
Power (Watts)	420	650	900	1260	1350
Lumen Output	58,800	88,200	117,600	176,400	224,000
Weight (KG) with remote driver	11.3	13.3	18.2	21.5	26.6
Input Voltage	90-305 VAC / 200-480 VAC				
IP / IK rating	IP66/ IK10				
Dimmable Options	1-10v / Dali Optional				
Finish	Black or Grey Powder Coating				
IP Rating	IP66				
Beam Angles	15° / 30° / 60° / 45x95°				
CCT	3000K / 4000K / 5000K				
Warranty	5 Years				

For more information about the product featured in this datasheet please contact the experts at Exled. Call 01453 756 361, email sales@exled.co.uk or visit exled.co.uk



Datasheet

Overview

Technical Data

Dimensions

Imagery

Contact us



Revisions	Rev	Description	Date

Drawn By: Mark Ruthers
Checked By:
Date: 15/08/2023
Scale:

The Lensbury
Tennis

DS_GALAXY-420-630-840-1060-1260-1600-XMC



420W

340x150.5x570 mm
(L*W*H)



630W

340x150.5x720 mm
(L*W*H)



840W

643x150.5x570 mm
(L*W*H)



1060W/1260W

643x150.5x720 mm
(L*W*H)

The drivers can be remotely mounted at the base of the column if required.

For more information about the product featured in this datasheet please contact the experts at Exled. Call 01453 756 361, email sales@exled.co.uk or visit exled.co.uk



Datasheet

Overview

Technical Data

Dimensions

Imagery

Contact us



Rev	Description	Date

Revisions

Drawn By: Mark Ruthers
Checked By:
Date: 15/08/2023
Scale:

**The Lensbury
Tennis**

DS_GALAXY-420-630-840-1060-1260-1600-XMC



420W



630W



840W



1600W

For more information about the product featured in this datasheet please contact the experts at Exled. Call 01453 756 361, email sales@exled.co.uk or visit exled.co.uk



Datasheet

Overview

Technical Data

Dimensions

Imagery

Contact us



Revisions

Drawn By: Mark Ruthers
Checked By:
Date: 15/08/2023
Scale:

The Lensbury
Tennis



Luminaire Schedule									
Symbol	Qty	Label	Arrangement	Description	Tag	LLF	Luminaire Lumens	Luminaire Watts	Total Watts
☒	4	Galaxy-XMC-630W-45x95-ASY	Single	GALAXY-XMC-630W-45x95-ASY	Exled Ltd	0.900	91650	629.74	2518.96
☒	2	Galaxy-XMC-420W-45x95-ASY	Single	GALAXY-XMC-420W-45x95-ASY	Exled Ltd	0.900	61695	418.38	836.76

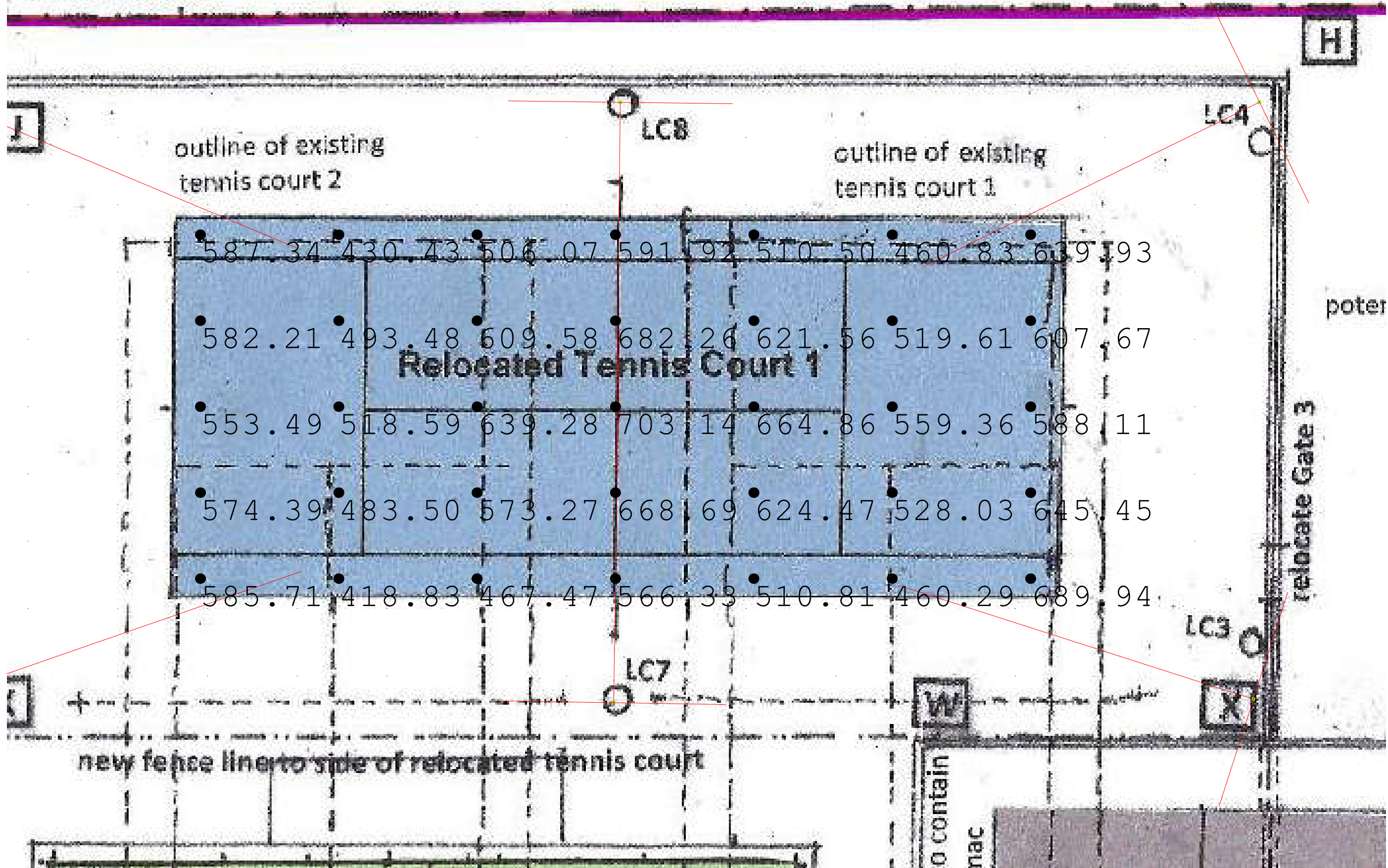
Calculation Summary							
Label	CalcType	Units	Avg	Max	Min	Min/Avg	Min/Max
tennis PPA	Illuminance	Lux	567.64	703.14	418.83	0.74	0.60
tennis TPA	Illuminance	Lux	519.44	708.98	305.83	0.59	0.43

Revisions

Drawn By: Mark Ruthers
Checked By:
Date: 15/08/2023
Scale:

The Lensbury
Tennis

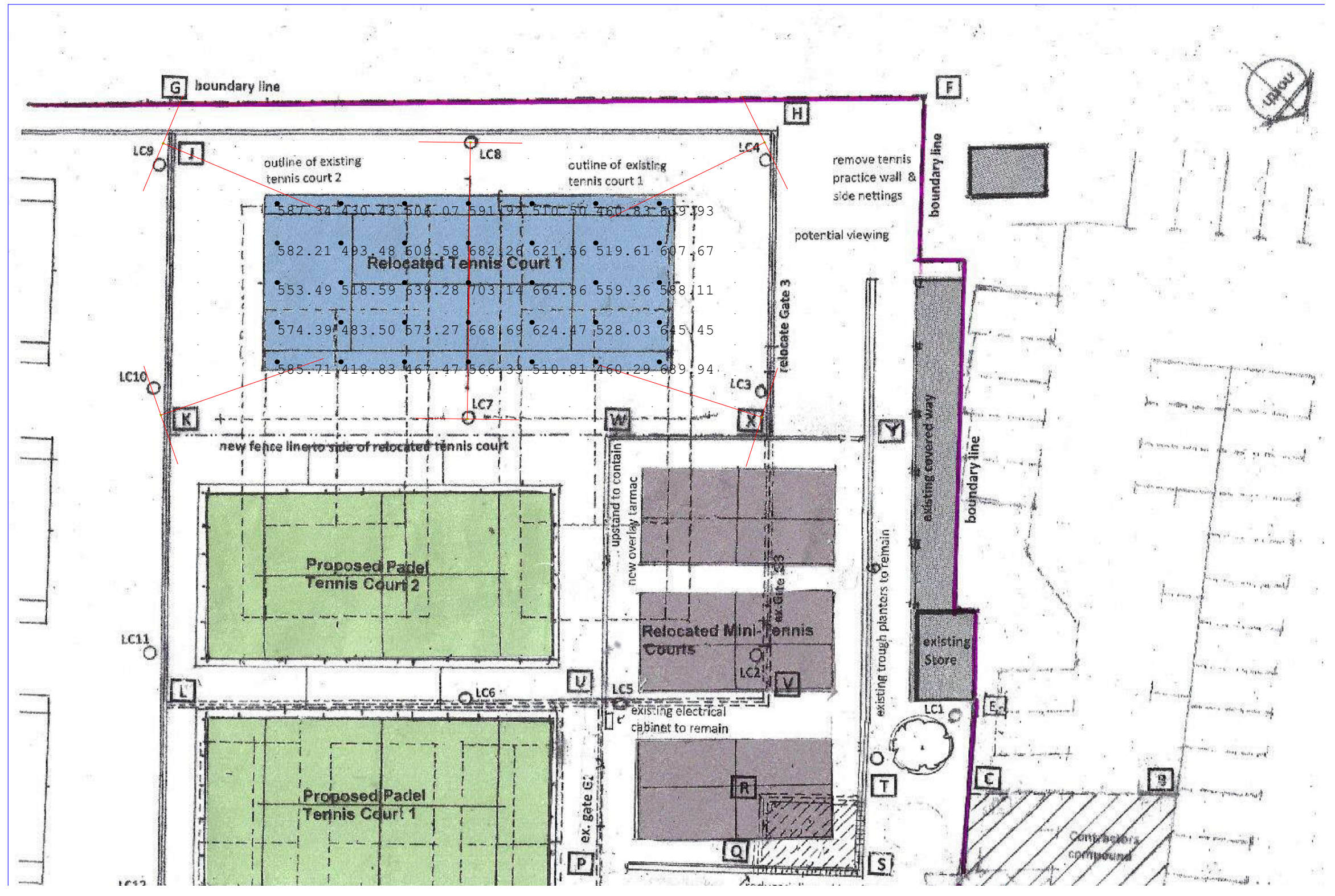
boundary line



Revisions	

Drawn By: Mark Ruthers
 Checked By:
 Date: 15/09/2023
 Scale:

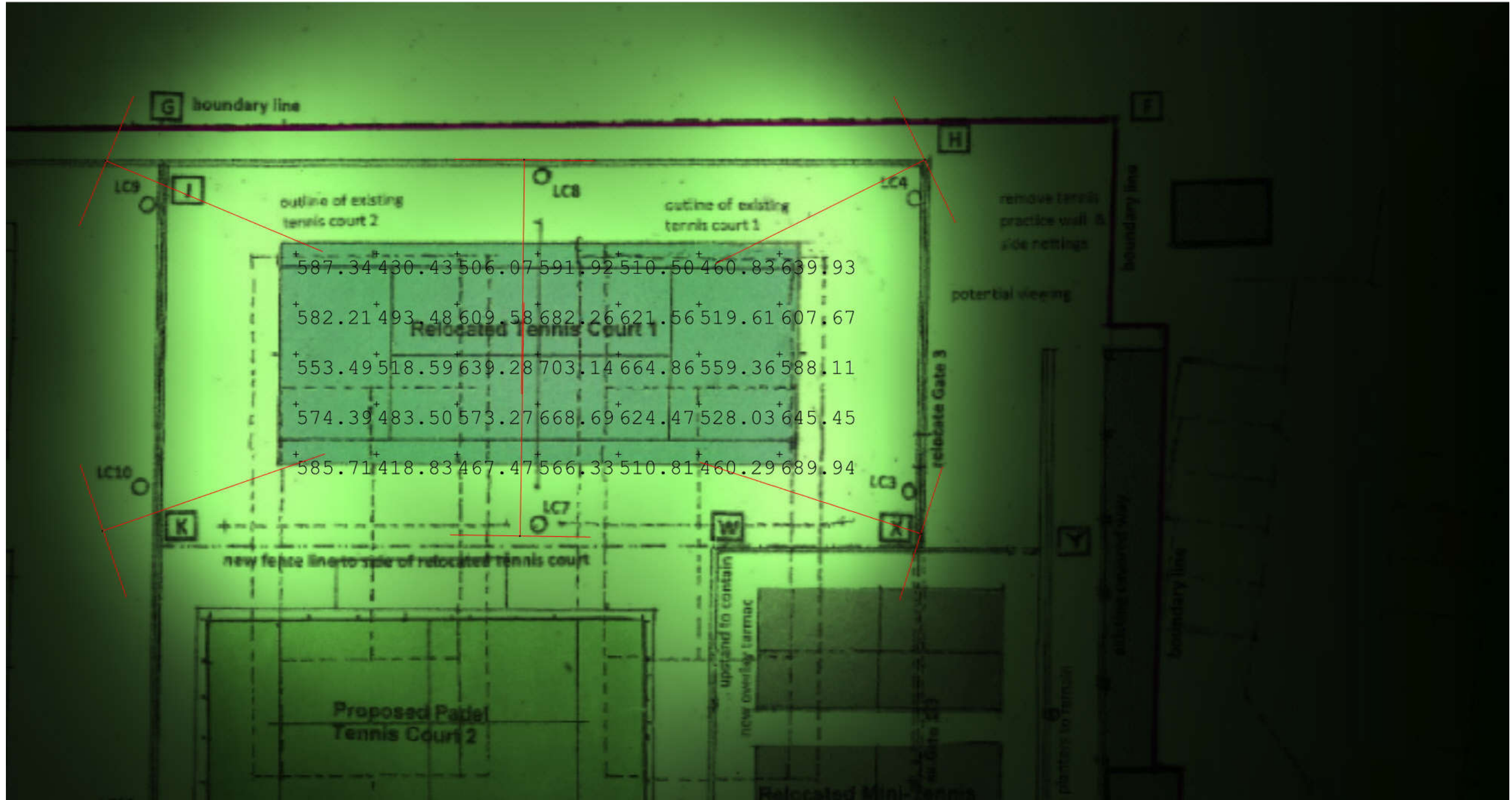
The Lensbury
Tennis



Revisions	

Drawn By: Mark Ruthers
 Checked By:
 Date: 15/08/2023
 Scale:

The Lensbury Tennis



Revisions

Drawn By: Mark Ruthers
Checked By:
Date: 15/09/2023
Scale:

The Lensbury Tennis

