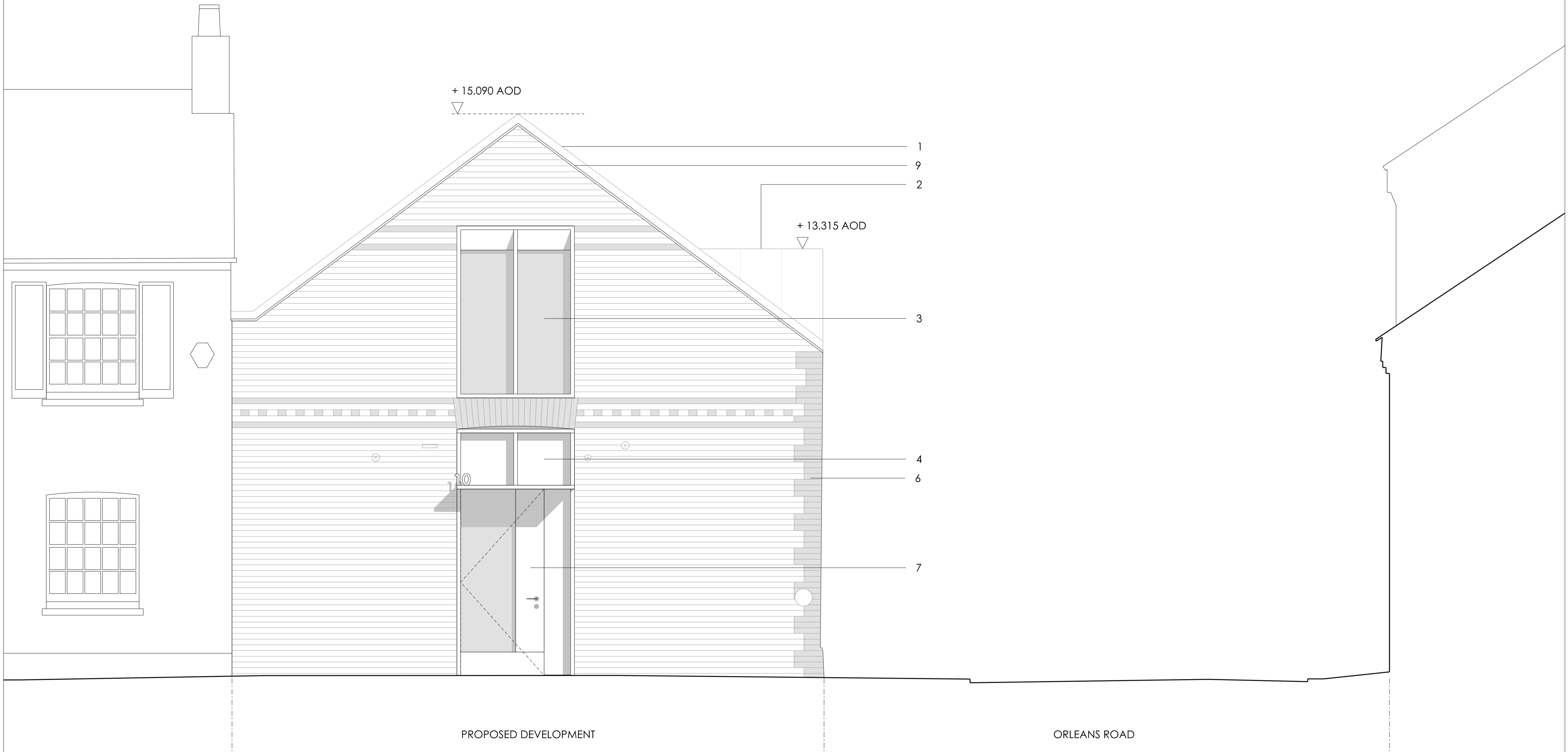


Key

- 1 Brown / red clay handset roof tiles
- 2 Brown / red weathered steel cladding to roof dormers
- 3 Timber or composite timber window system
- 4 Timber solid infill
- 5 Remove existing plastic rainwater goods
- 6 Retain, clean and restore decorative brick features
- 7 Timber or composite timber entrance door assembly
- 8 Low profile conservation glazed rooflights
- 9 Brown / Red weathered steel edge trim



| KEY |
|-----|
| |

| REV / DATE |
|------------|
| |

NOTES

Do not scale from this drawing for reasons other than by the local planning authority and for the purposes of the planning application to which it relates. Discrepancies must be reported immediately to the Architect/Client before proceeding. Check all dimensions on site before fabrication or setting out. All dimensions are shown in metric.

This document is protected by copyright and may not be reproduced without permission of the owner.



| | | | |
|--|------|-----------------|--------------|
| 2C | | NO: | 22001 |
| | | PROJECT: | ORLEANS ROAD |
| TITLE PROPOSED ELEVATION NORTH | | | |
| DRN: | CHK: | SCALE: | STATUS: |
| BC | GC | 1:50/A3 1:25/A1 | PLANNING |
| DRAWING: | | | REV: |
| 22001_E101 | | | P1 |