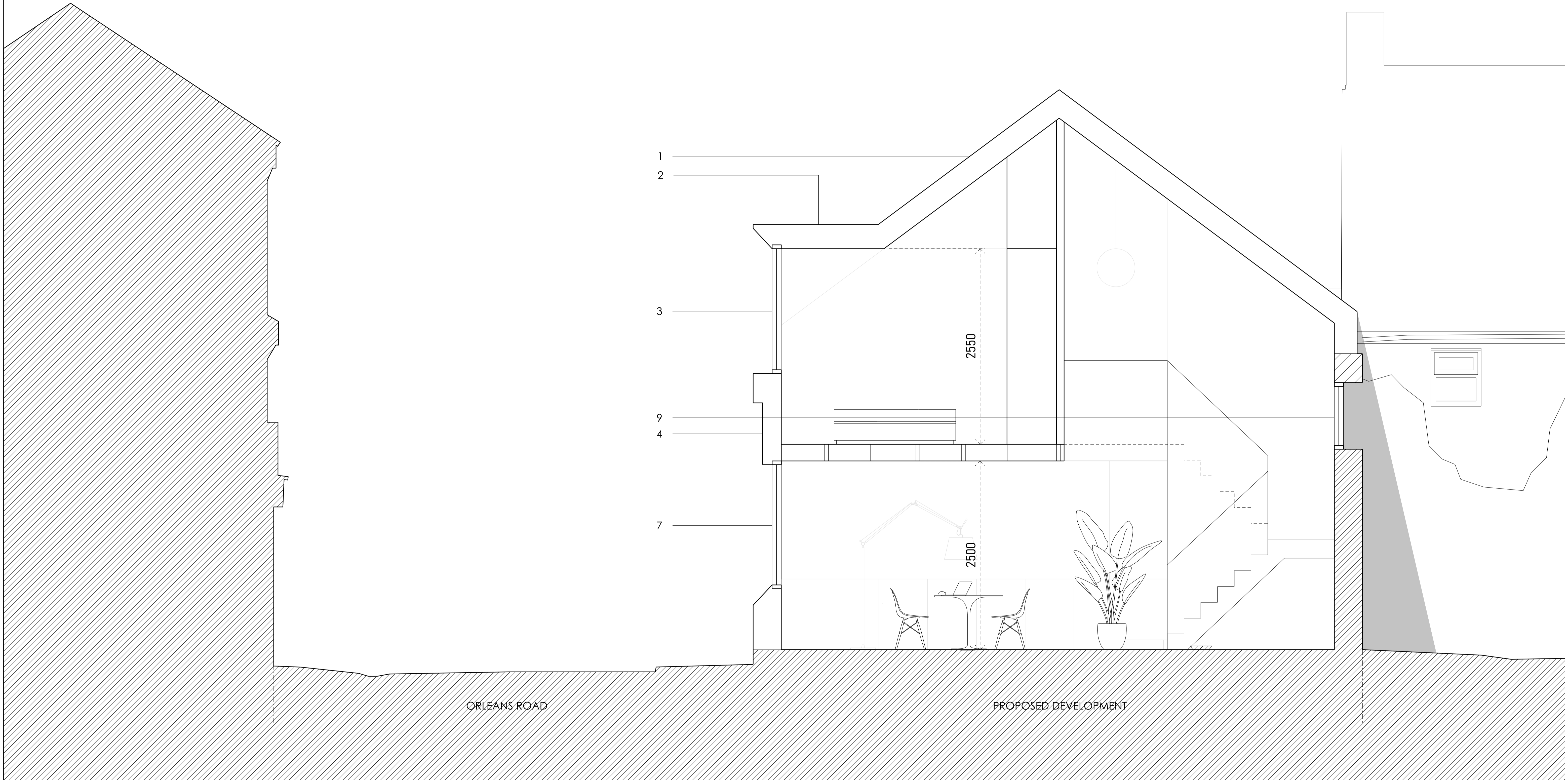


Key

- 1 Brown / red clay handset roof tiles
- 2 Brown / red weathered steel cladding
- 3 Timber or composite timber window system
- 4 Timber solid infill
- 5 Remove existing plastic rainwater goods
- 6 Retain, clean and restore decorative brick features
- 7 Timber or composite timber entrance door assembly
- 8 Low profile conservation glazed rooflights
- 9 Retain existing opening to party wall



KEY

REV / DATE

NOTES

Do not scale from this drawing for reasons other than by the local planning authority and for the purposes of the planning application to which it relates. Discrepancies must be reported immediately to the Architect/Client before proceeding. Check all dimensions on site before fabrication or setting out. All dimensions are shown in metric.

This document is protected by copyright and may not be reproduced without permission of the owner.



<b>2C</b>		NO: 22001	
		PROJECT: ORLEANS ROAD	
TITLE: PROPOSED SECTION BB			
DRN: BC	CHK: GC	SCALE: 1:50/A3 1:25/A1	STATUS: PLANNING
DRAWING: 22001_S101			REV: P1