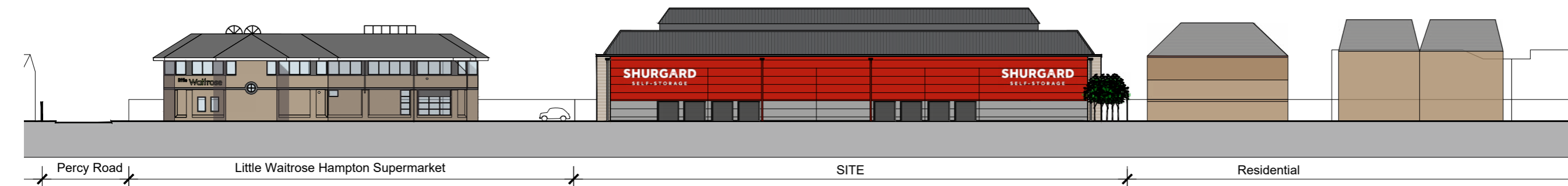
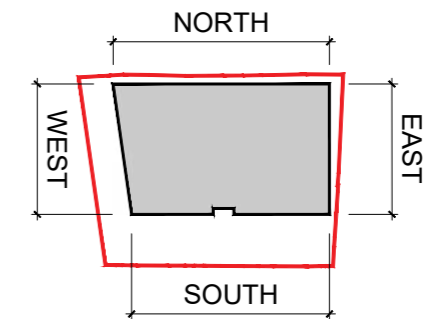
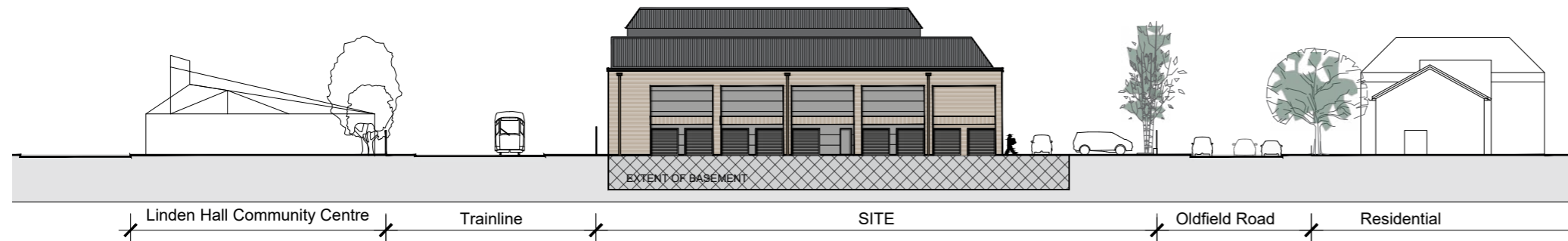
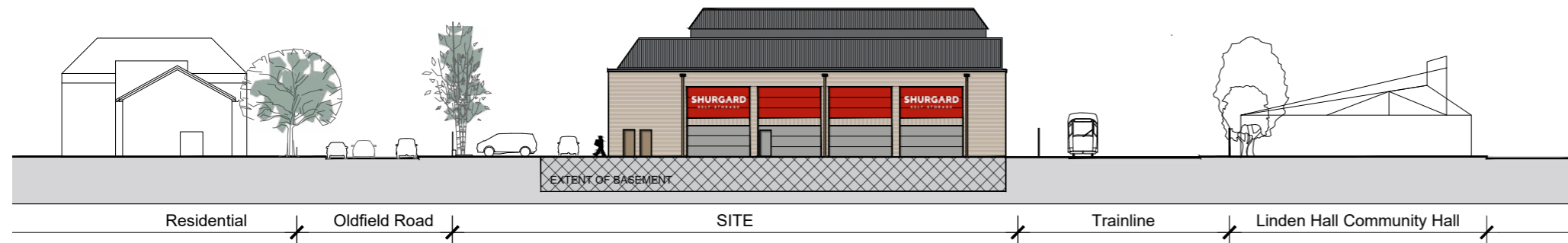
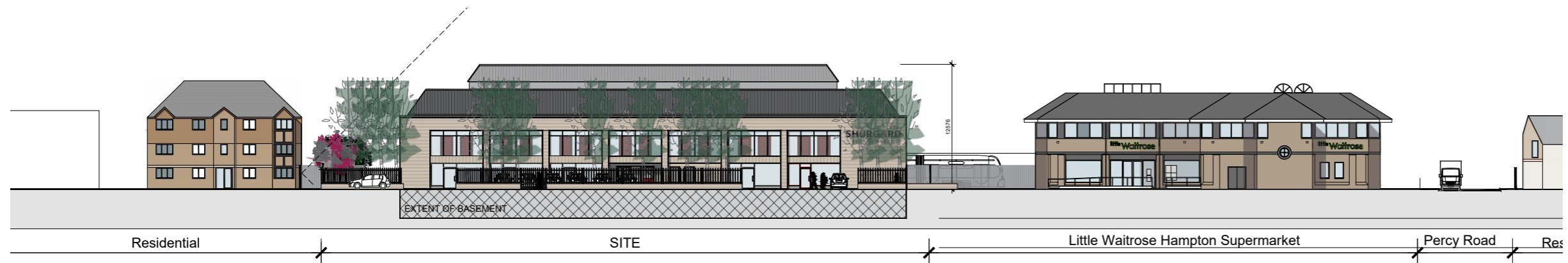


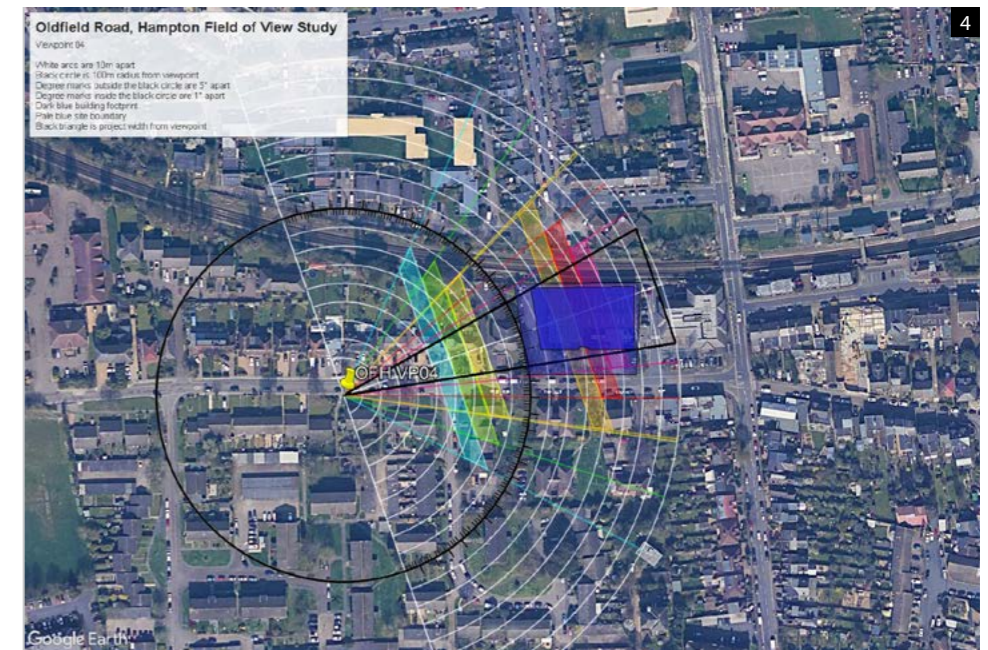
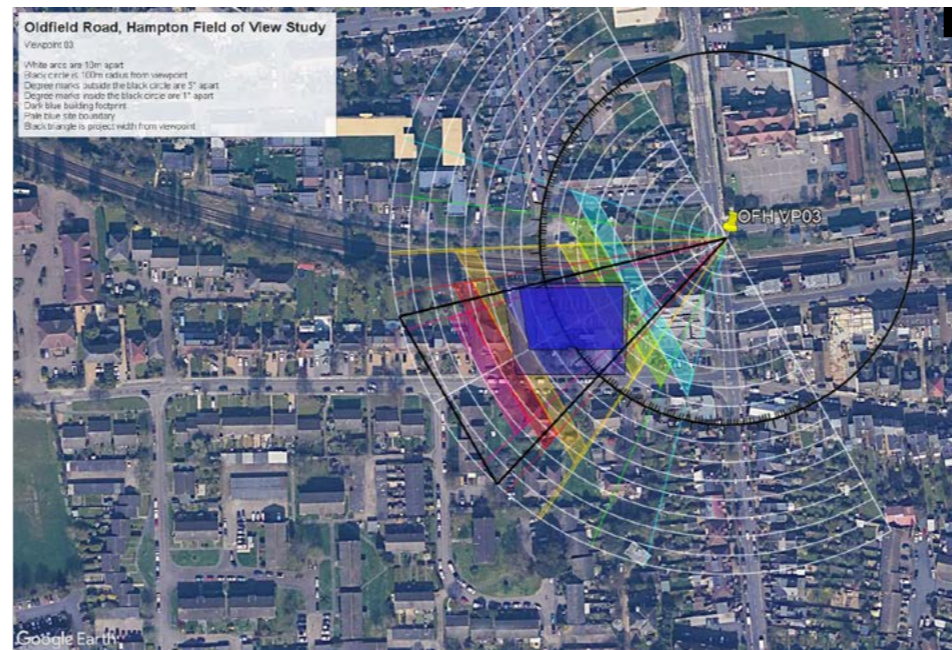
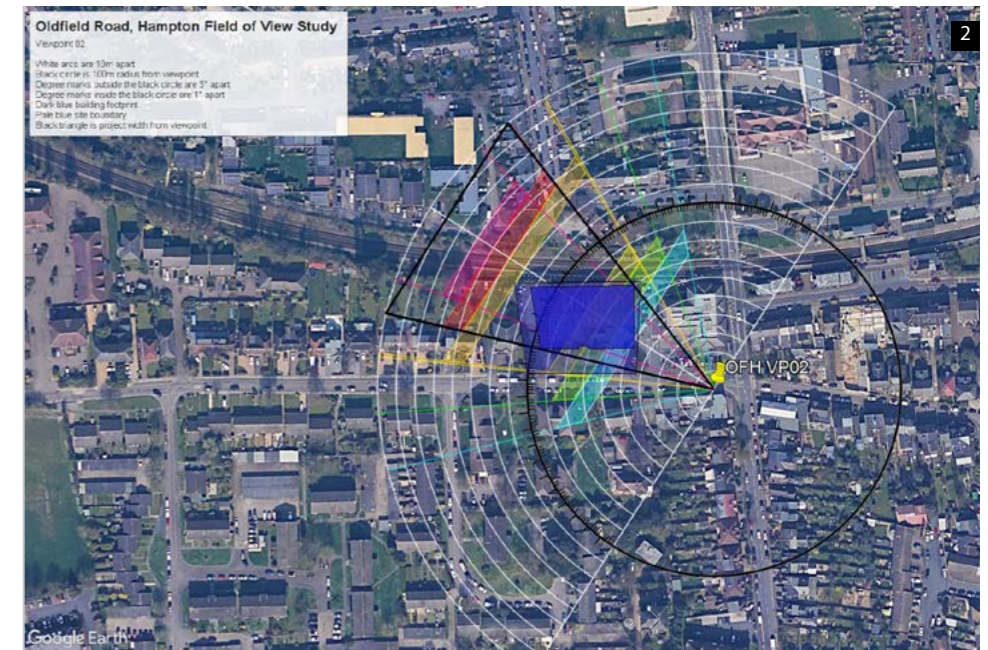
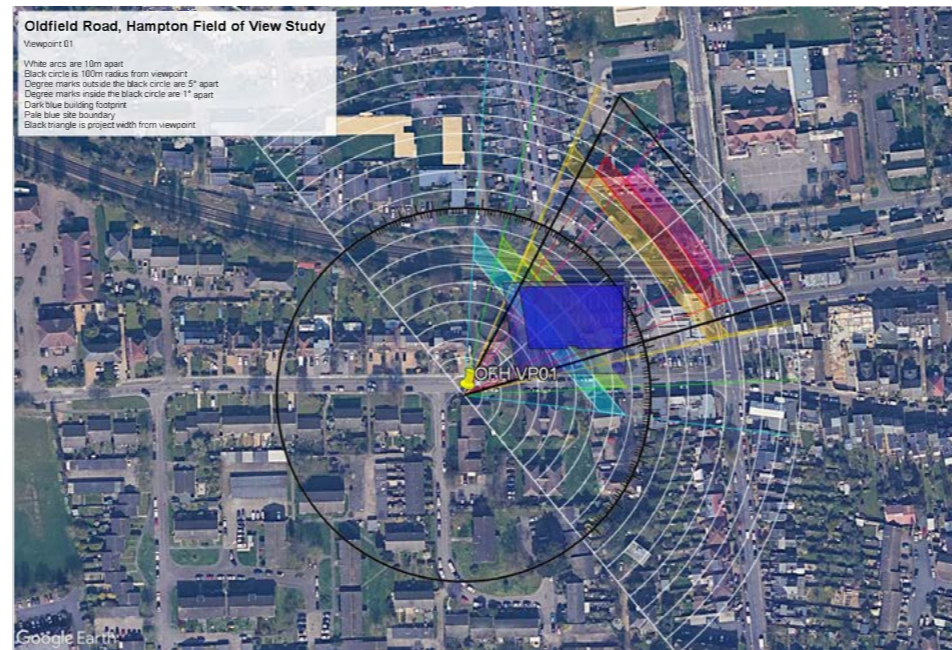
Proposed Contextual Elevations



Verified Views

To assist with the analysis of the development a series of verified wire frame views have been carried out. The images to the right illustrate the key view points which have been assessed to understand what the impact of the proposal would have on the surrounding locality. These as existing views, are reviewed on the following pages illustrating the wire frame outline of the proposal.

- View 1 – Looking East on Oldfield Road, XXm from site.
XXXXXX.XXX E, XXXXX.XXX N
- View 2 - Looking West on Oldfield Road, XXm from site.
XXXXXX.XXX E, XXXXX.XXX N
- View 3 – Looking south-west on Percy Road, XXm from site.
XXXXXX.XXX E, XXXXX.XXX N
- View 4 - Looking East on Oldfield Road, XXm from site.
XXXXXX.XXX E, XXXXX.XXX N



Verified View 01

- View 1 – Looking X, XXm from site.

XXXXXX.XXX E, XXXXXX.XXX N

In abeyance



Verified View 02

- View 2 – Looking X, XXm from site.

XXXXXX.XXX E, XXXXXX.XXX N



Verified View 03

- View 3 – Looking X, XXm from site.

XXXXXX.XXX E, XXXXXX.XXX N



Verified View 04

- View 4 – Looking X, XXm from site.

XXXXXX.XXX E, XXXXXX.XXX N



Material Samples



- 1 Max Dudler Germany
- 2 Curtain walling
- 3 Tudor Grange School - Flemish bond projections
- 4 Spectrum gray curved wall panel
- 5 London Stock brick



Supporting Information

Crime Prevention & Safety	44
Fire Assessment	45
Accessibility	46
Bicycle Parking	47
Waste & Servicing Strategy	48
Vehicle Tracking & Visibility Splays	49
Landscape Approach & Biodiversity	50

4