

### Proposed Bin Enclosure Plan

Scale 1:20

#### Description

Rowlinson Bin Stores are the ideal way to hide away your necessary but unsightly wheelie bins. Lifting lids with chains that attach to your bin and opening fronts provide easy access when filling and removing your bins on collection day. All Rowlinson Bin Stores are pressure treated against rot, ensuring that they will be hiding away your bins for many years to come. Available in single, double and triple capacities.

#### Features:

- Attractive storage for three standard sized wheelie bins (Max. bin size: H1060mm W740mm D740mm)
- Lifting lids with chains to bin lids for easy use
- Easy access
- Natural timber finish
- Pressure treated against rot

#### Dimensions:

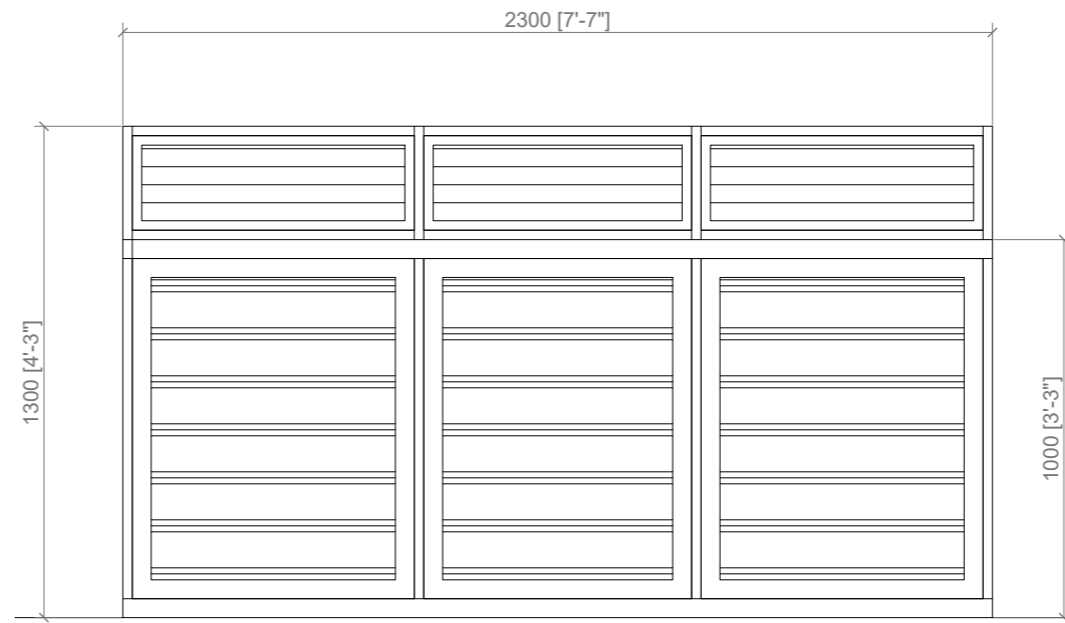
- Height: 1300mm
- Width: 2305mm
- Depth: 820mm

#### Includes:

- Full fixing kit
- Assembly instructions

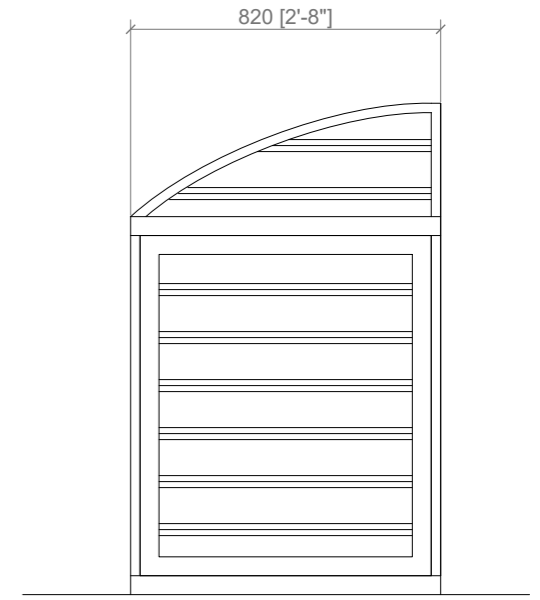
#### Features

Use -	Triple
Material -	Wood
Length -	74 cm
ManoMano Reference -	ME7525421
Warranty -	0 years
SKU -	BINTRPL1



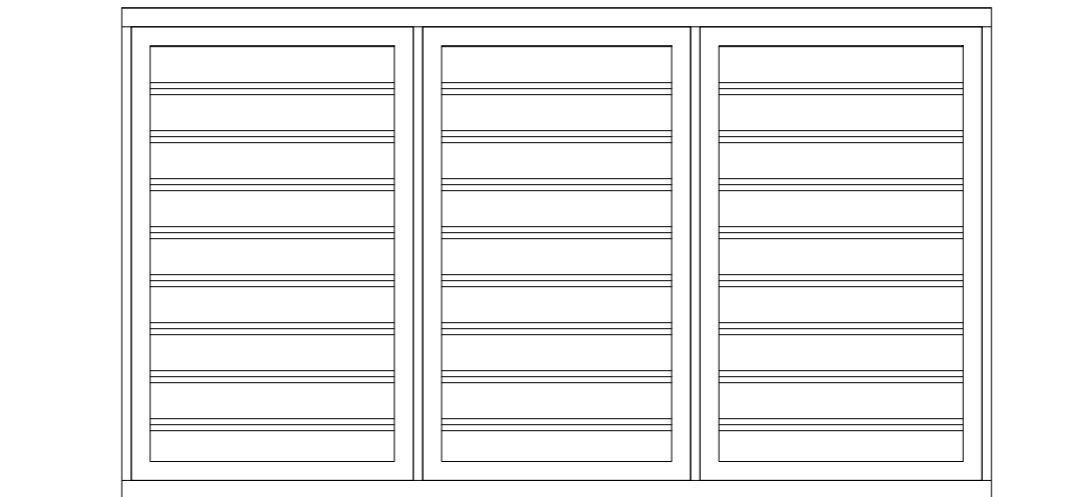
Bin Store  
Front Elevation

Scale 1:20



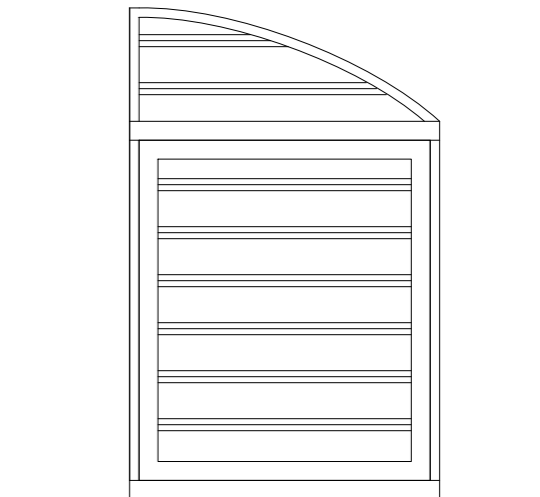
Bin Store  
Side Elevation

Scale 1:20



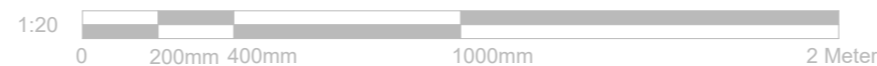
Bin Store  
Rear Elevation

Scale 1:20

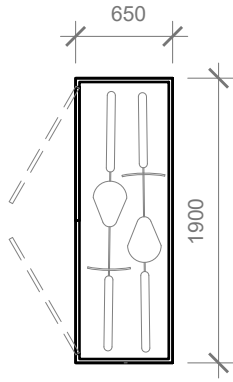


Bin Store  
Side Elevation

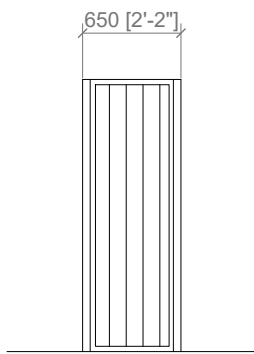
Scale 1:20



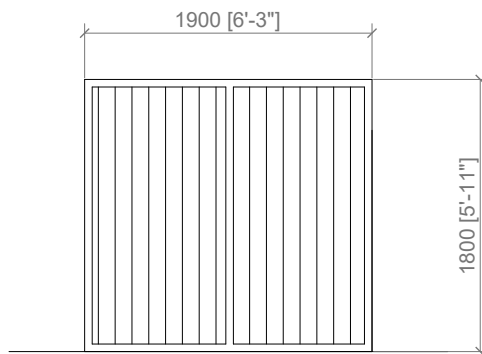
Project: 561-563 Upper Richmond Road West East Sheen SW14 7ED	Title: Proposed Plan Proposed Elevations	Scale: 1:20 @ A3 Date: 03 . 2024 Drawing No.: 175 - 08/MT Revision



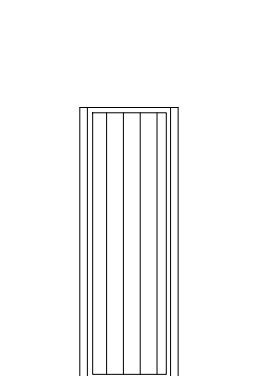
Bicycle Store Plan  
Scale 1:50



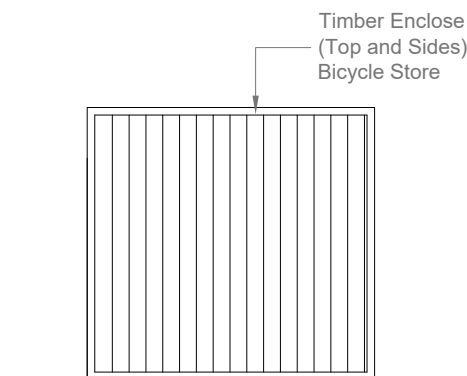
Bicycle Store  
Side Elevation  
Scale 1:50



Bicycle Store  
Front Elevation  
Scale 1:50



Bicycle Store  
Side Elevation  
Scale 1:50



Bicycle Store  
Rear Elevation  
Scale 1:50

1:50



Project: 561-563 Upper Richmond Road West East Sheen SW14 7ED	Title: Proposed Plan Proposed Elevations	Scale: 1:50 @ A4 Date: 03 . 2024 Drawing No.: 175 - 09/MT Revision