

m

# RICHMOND ROAD WEST

## TCB

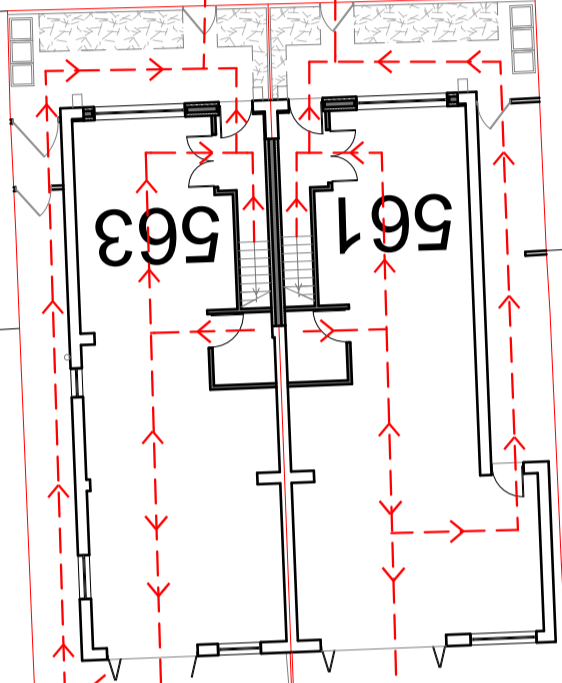
## 565

**Fire Appliance Location**

A dedicated unobstructed area for the storage of fire equipment

A dedicated unobstructed area for evacuation

A dedicated unobstructed area for evacuation



## Derby Court

## 6 5

## 2 1

## 2

## 0

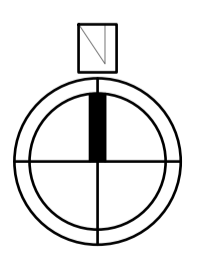
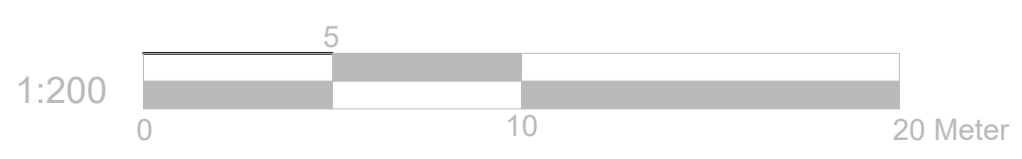
--- Fire Escape Route

--- The existing partitions forming the protected staircase must provide half-hour fire resistance. They must be lined with 12.5mm plasterboard and skim

The doors to Bedrooms and any habitable rooms and the final exit door must not be fitted with a key on the inside. Thumb turns are acceptable

⊙ Assembly Point

Site Plan  
Scale: 1:100



|   |                              |   |
|---|------------------------------|---|
| Project:<br>561-563 Upper<br>Richmond Road West<br>East Sheen<br>SW14 7ED | Title:<br>Proposed Site Plan | Scale: 1:100 @ A3<br>Date: 03 . 2024<br>Drawing No.:<br>175 - 12/MT<br>Revision |
|   |                              |   |