



Key:

Cycle parking is to be provided in accordance with the London Plan minimum cycle parking standards.

Residential

The minimum cycle parking standards as set out in the London plan:

- 1 long term spaces per studio and 1 bedroom unit.
- 2 long term spaces for all other units.
- 1 short term space per 40 units.

Total Cycles -

The proposed residential development comprises of 30 no. studio/ 1 beds and 41 no. other units therefore a total of 112 long term cycle parking spaces and 2 short term cycle parking spaces is needed to be provided.

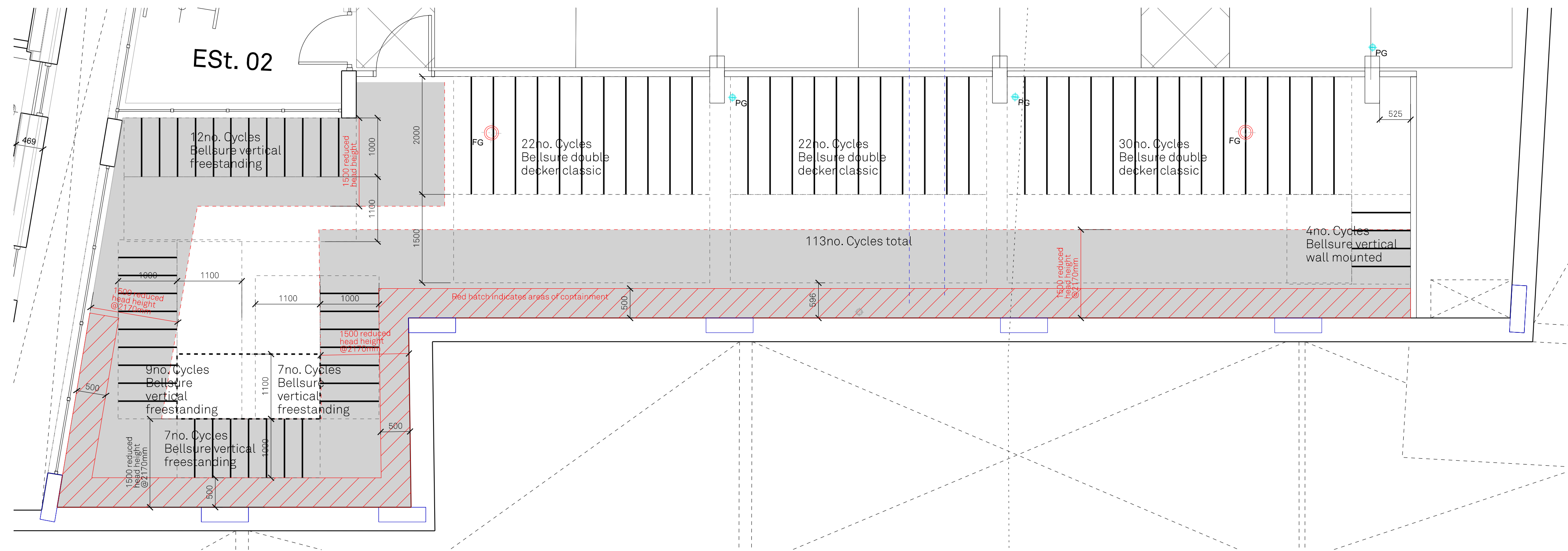
123 long term cycle parking will be provided at lower ground level within the residential block and provision for 2 short term cycle parking spaces has been made at ground level off Kew Foot Road by the main pedestrian access

Health Care

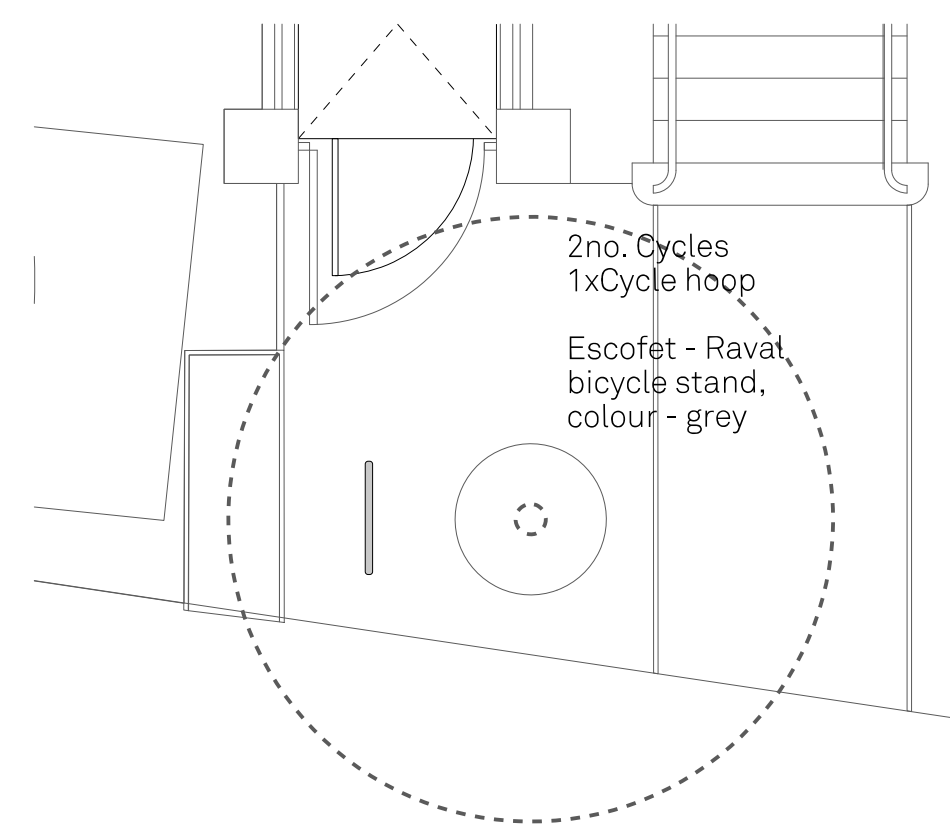
The minimum cycle parking standards for D1 health centres are as follows:

- 1 long term space per 5 staff;
- 1 short term space per 3 staff.

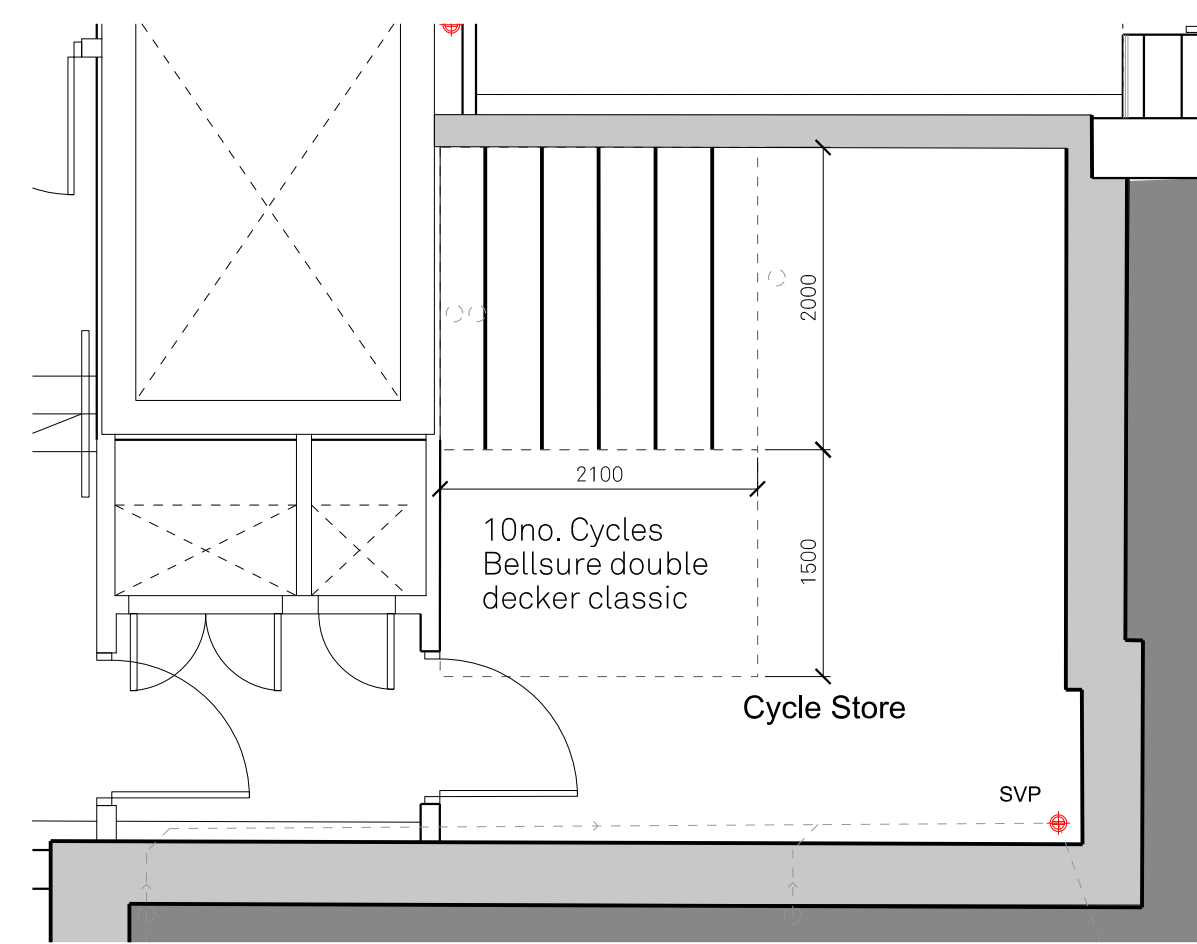
As per the Richmond Royal Hospital Workplace Travel Plan, Reference: PB8054TPRP1811281143, Revision: 0.1/Final - there are 40 no. estimated staff. Therefore 8 no. Long stay cycle spaces at basement level within the NHS clinic and 14 no short stay cycle spaces are proposed at Ground Level off Evelyn Road.



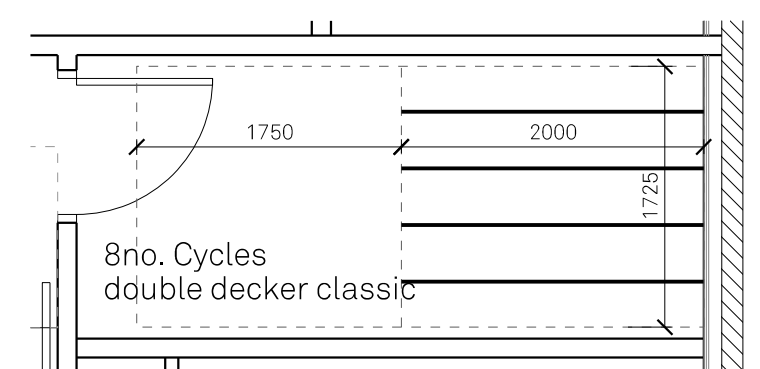
A. Basement Level - Long Stay Residential Cycle Store  
 Total 113 no. Cycles



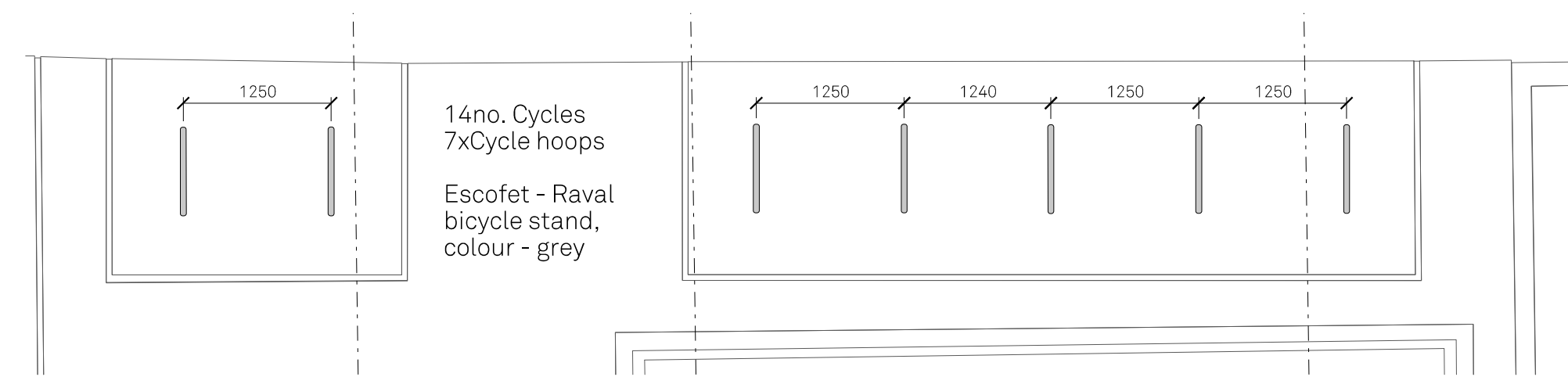
B. Ground Level - Block D concierge Residential Short Stay  
 Total 2 no. Cycles



E. Basement Level - Block B Long Stay Residential Cycle Store  
 Total 10 no. Cycles



C. Basement Level - Long Stay Health Care Cycle Store  
 Total 8 no. Cycles



D. Ground Level - Short Stay Health Care Cycle Store  
 Total 14 no. Cycles



Bellsure - Double Decker Classic  
 Mild Steel - Galvanised



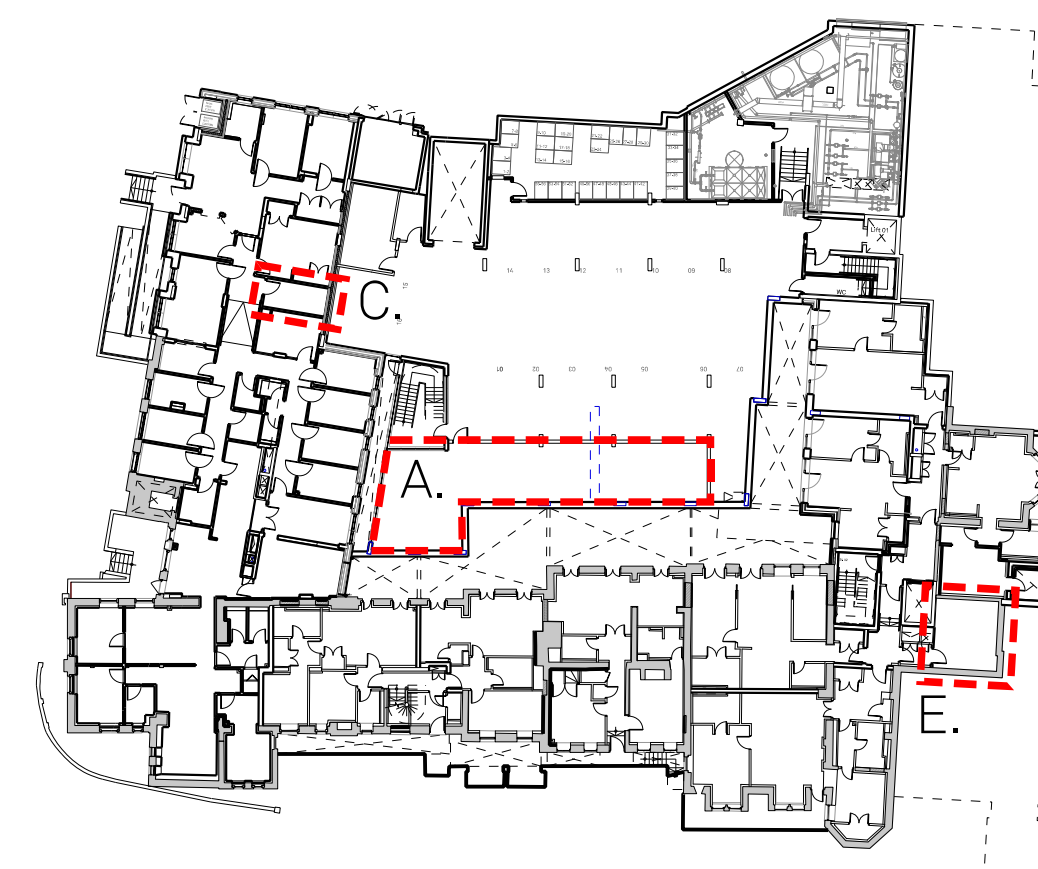
Bellsure - Vertical Free Standing  
 Mild Steel - Galvanised



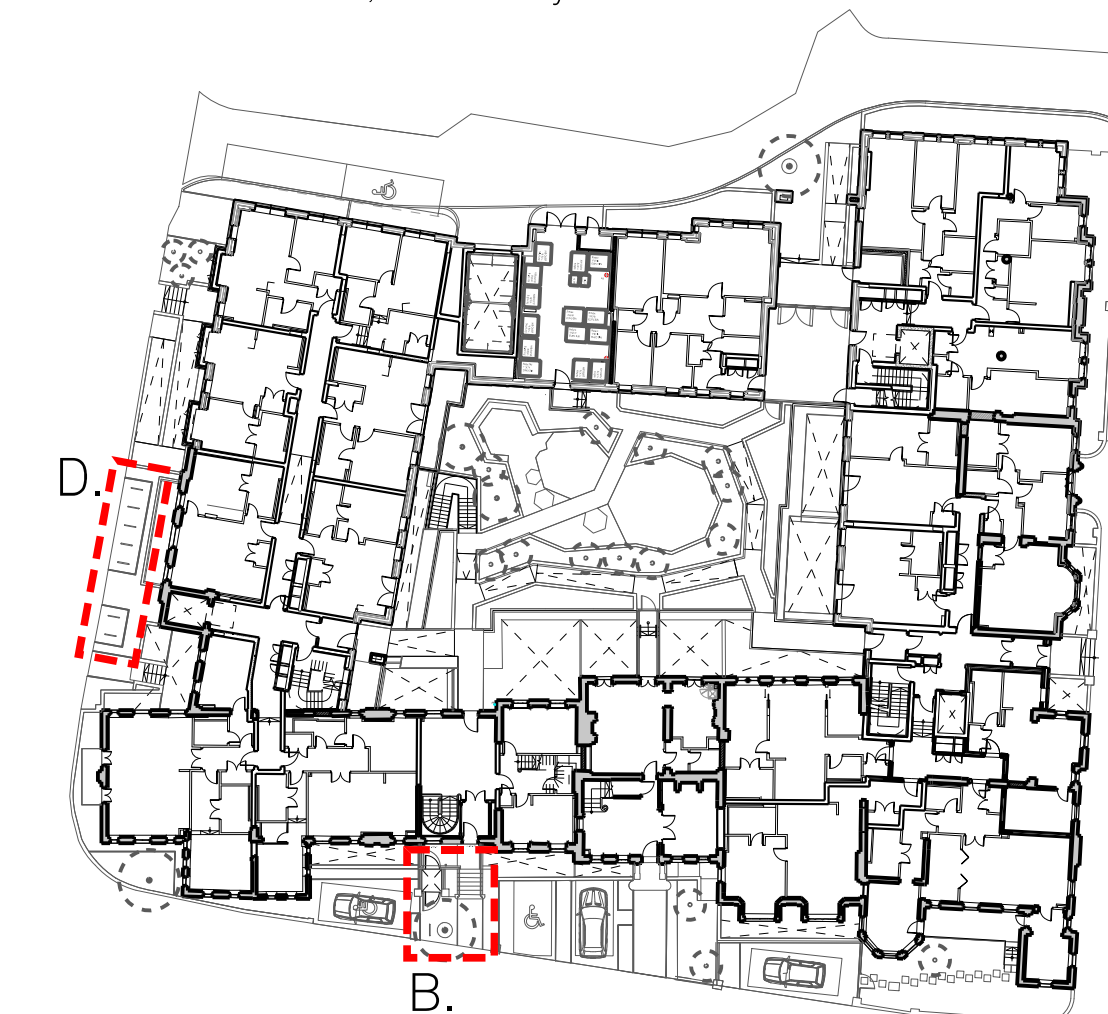
Bellsure - Vertical wall mounted  
 Mild Steel - Galvanised



Escofet - Raval bicycle  
 stand, colour - Grey



Basement Level - Key Plan



Ground Level - Key Plan

P04	02.05.24	DH	PR	Block B Cycle store added
P03	30.04.24	DH	PR	Images added
P02	13.03.24	DH	PR	Updated in line with client/ RJA
Review				
P01	28.02.24	DH	PR	First Issue
Rev:	Date:	By:	Chk By:	Rev Note:



London | Liverpool | Manchester | www.fcharchitects.com | +44(0)151 243 5800

Project Title	Royal Hospital Richmond	Client	UKJ Richmond Limited
Drawing Title	Cycle Store Layout	Drawing No.	P20103-FCH-XX-XX-DR-A-6850
Status	Issue suitable for:	Date	04.01.24
Job No.	P20-103	Drawing Stage	Construction
Scale	1:20 @ A1	Rev	P04
Checked By	PR	Drawn By	DH