



Key:

Cycle parking is to be provided in accordance with the London Plan minimum cycle parking standards.

Residential

The minimum cycle parking standards as set out in the London plan:

- 1 long term spaces per studio and 1 bedroom unit.
- 2 long term spaces for all other units.
- 1 short term space per 40 units.

Total Cycles -

The proposed residential development comprises of 30 no. studio/ 1 beds and 41 no. other units therefore a total of 112 long term cycle parking spaces and 2 short term cycle parking spaces is needed to be provided.

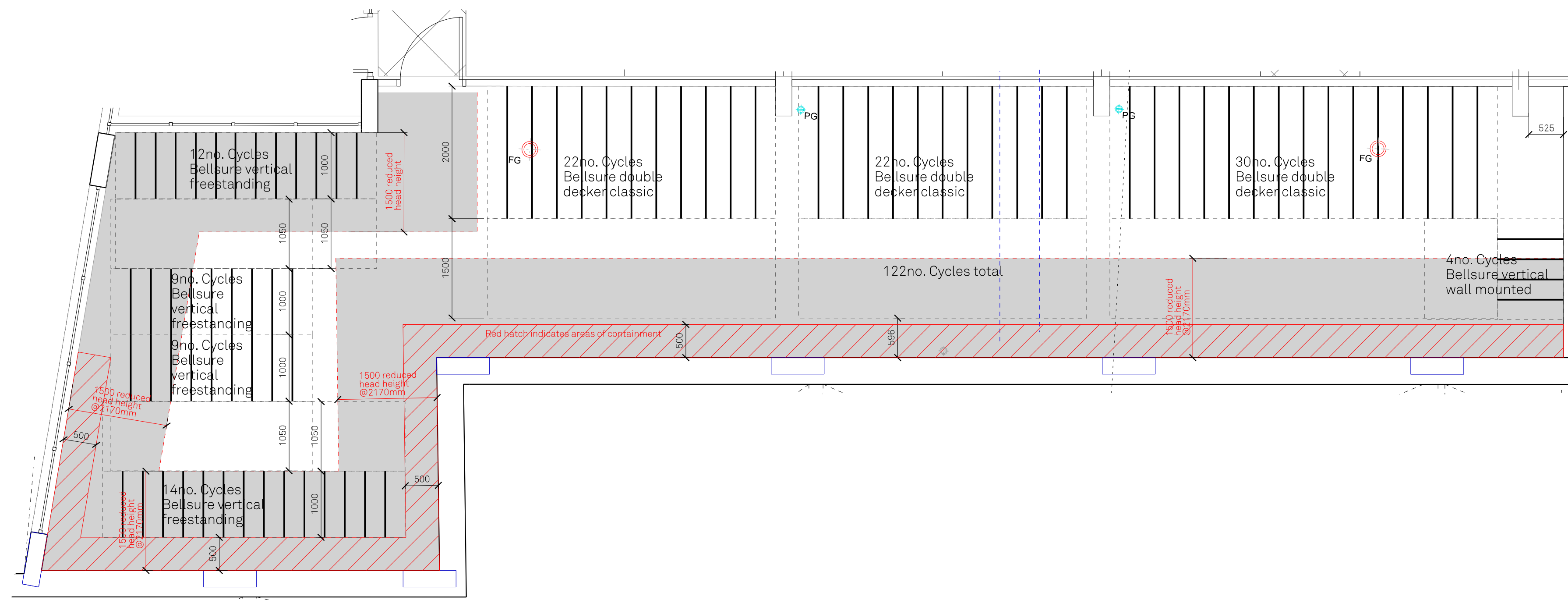
122 long term cycle parking will be provided at lower ground level within the residential block and provision for 2 short term cycle parking spaces has been made at ground level off Kew Foot Road by the main pedestrian access

Health Care

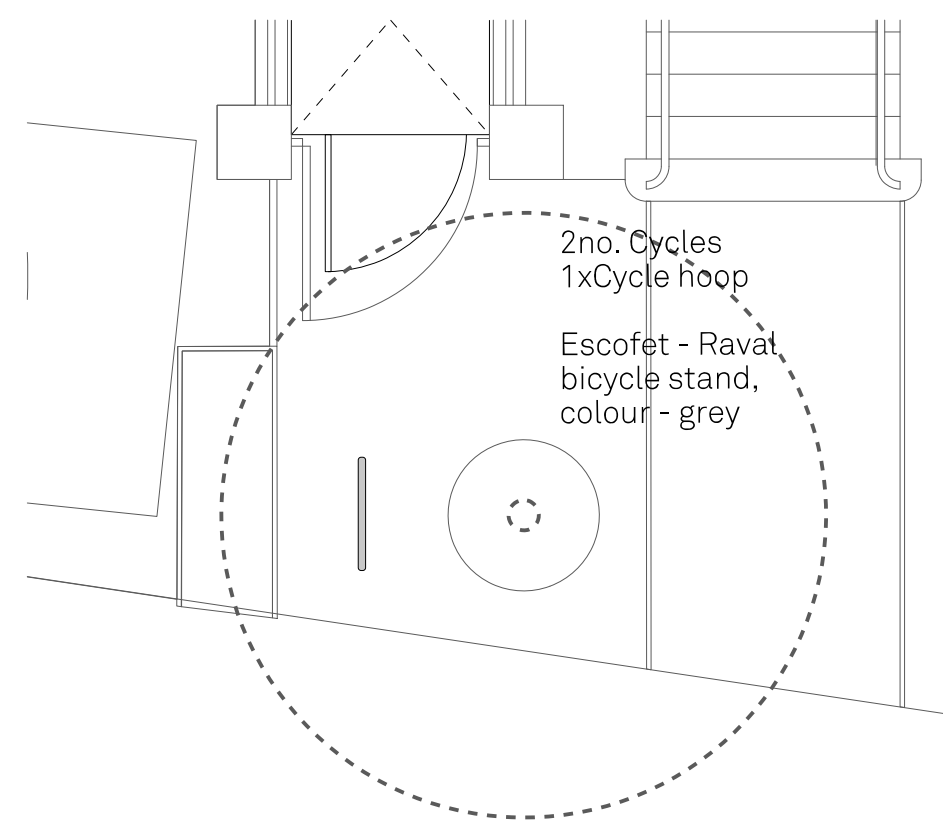
The minimum cycle parking standards for D1 health centres are as follows:

- 1 long term space per 5 staff;
- 1 short term space per 3 staff.

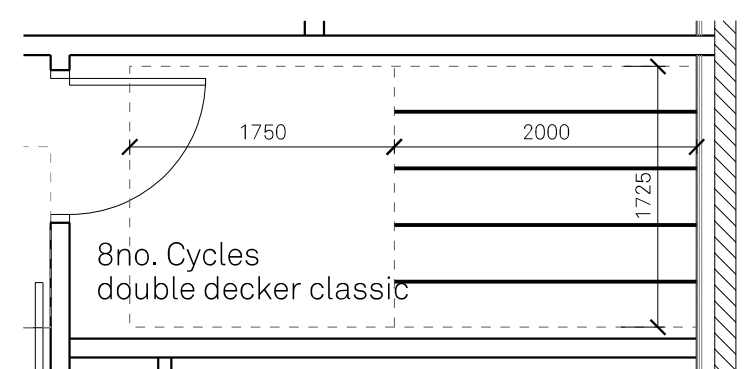
As per the Richmond Royal Hospital Workplace Travel Plan, Reference: PB8054TPRP1811281143, Revision: 0.1/Final - there are 40 no. estimated staff. Therefore 8 no. Long stay cycle spaces at basement level within the NHS clinic and 14 no short stay cycle spaces are proposed at Ground Level off Evelyn Road.



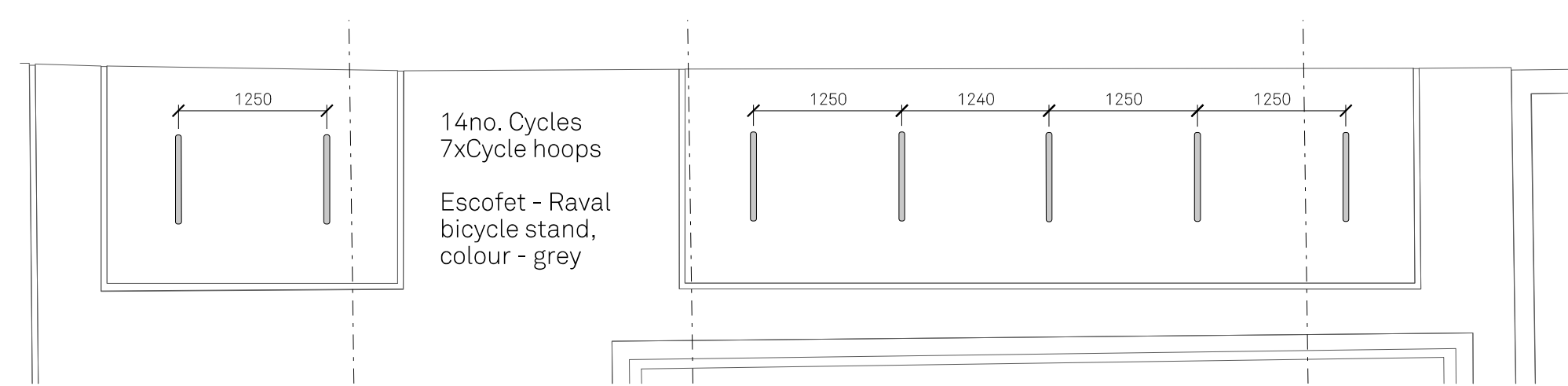
A. Basement Level - Long Stay Residential Cycle Store
 Total 113 no. Cycles



B. Ground Level - Block D concierge Residential Short Stay
 Total 2 no. Cycles



C. Basement Level - Long Stay Health Care Cycle Store
 Total 8 no. Cycles



D. Ground Level - Short Stay Health Care Cycle Store
 Total 14 no. Cycles



Bellsure - Double Decker Classic
 Mild Steel - Galvanised



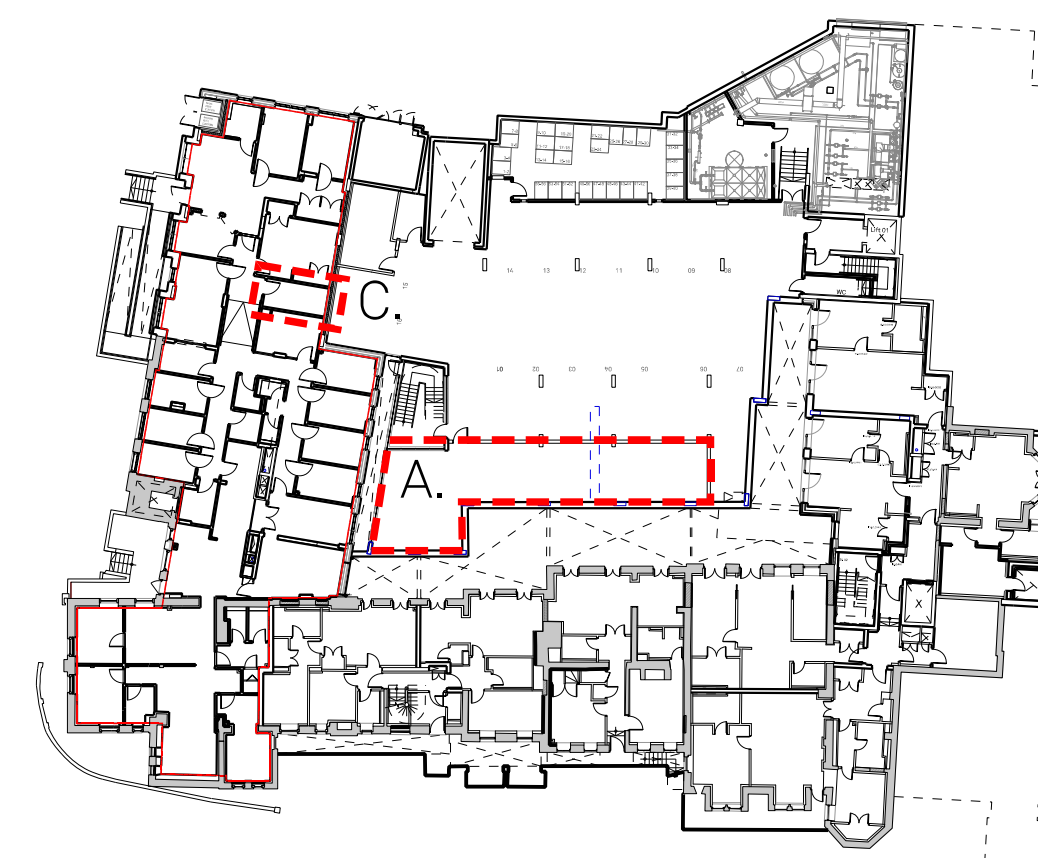
Bellsure - Vertical Free Standing
 Mild Steel - Galvanised



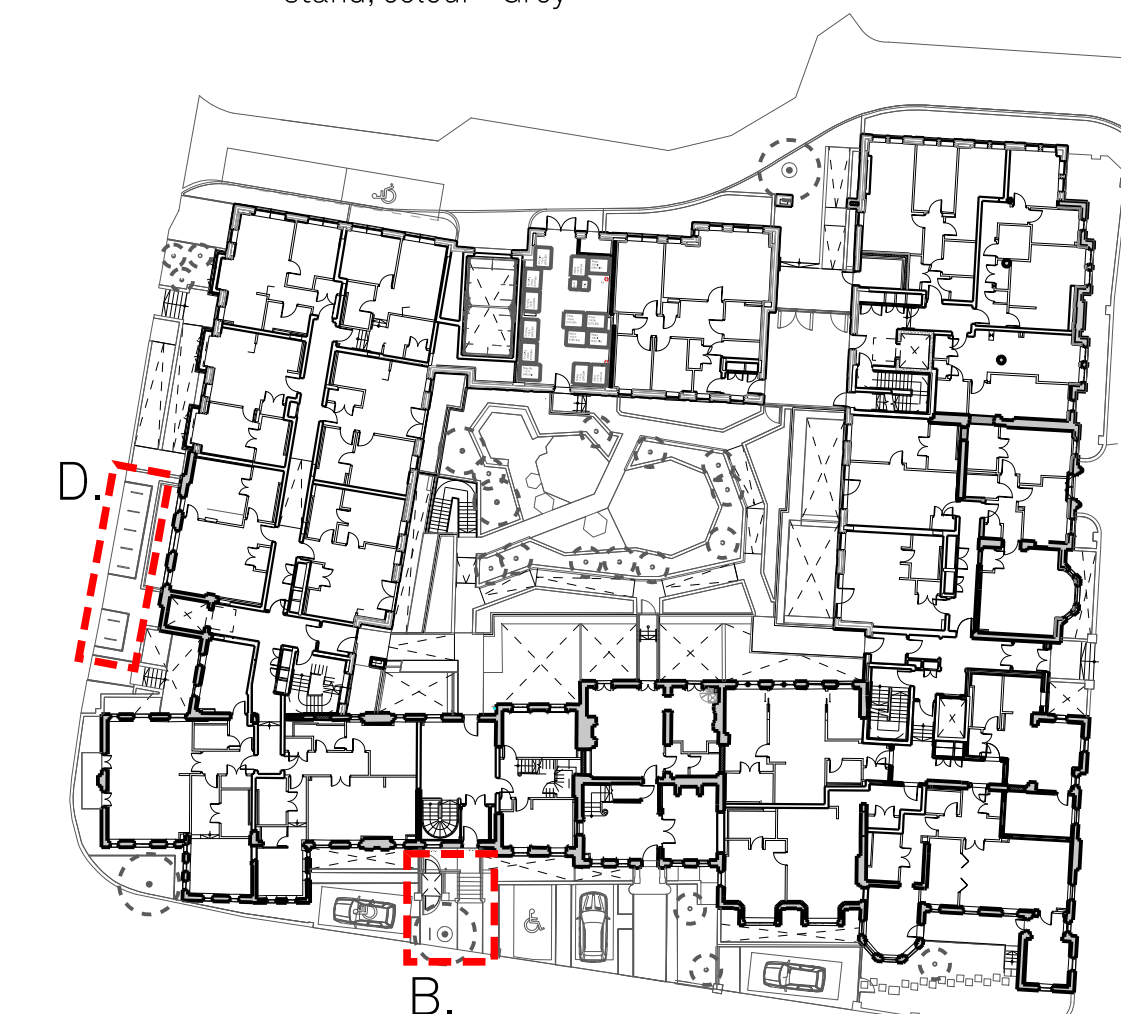
Bellsure - Vertical wall mounted
 Mild Steel - Galvanised



Escofet - Raval bicycle stand,
 colour - Grey



Basement Level - Key Plan



Ground Level - Key Plan

| | | | | |
|-----|----------|----|----|---|
| P05 | 14.05.24 | DH | PR | Block B cycle store omitted and basement cycle store amended. |
| P04 | 02.05.24 | DH | PR | Block B Cycle store added |
| P03 | 30.04.24 | DH | PR | Images added |
| P02 | 13.03.24 | DH | PR | Updated in line with client/ RJA review. |
| P01 | 28.02.24 | DH | PR | First Issue |

FALCONER CHESTER HALL

London | Liverpool | Manchester | www.fcharchitects.com | +44(0)151 243 5800

| | | | | |
|----------------------------|---------------------|-----------|--|------------|
| Project Title | | | | Rev |
| Royal Hospital Richmond | | | | P05 |
| Client | | | | Drawn By |
| UKJ Richmond Limited | | | | DH |
| Drawing Title | | | | Checked By |
| Cycle Store Layout | | | | PR |
| Drawing No. | | | | |
| P20103-FCH-XX-XX-DR-A-6850 | | | | |
| Status | Issue suitable for: | Date | | |
| S1 | Review & Comment | 04.01.24 | | |
| Job No. | Drawing Stage | Scale | | |
| P20-103 | Construction | 1:20 @ A1 | | |