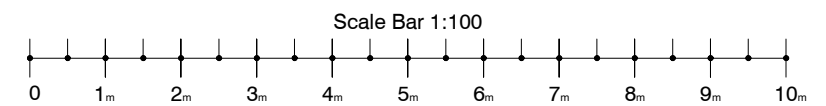
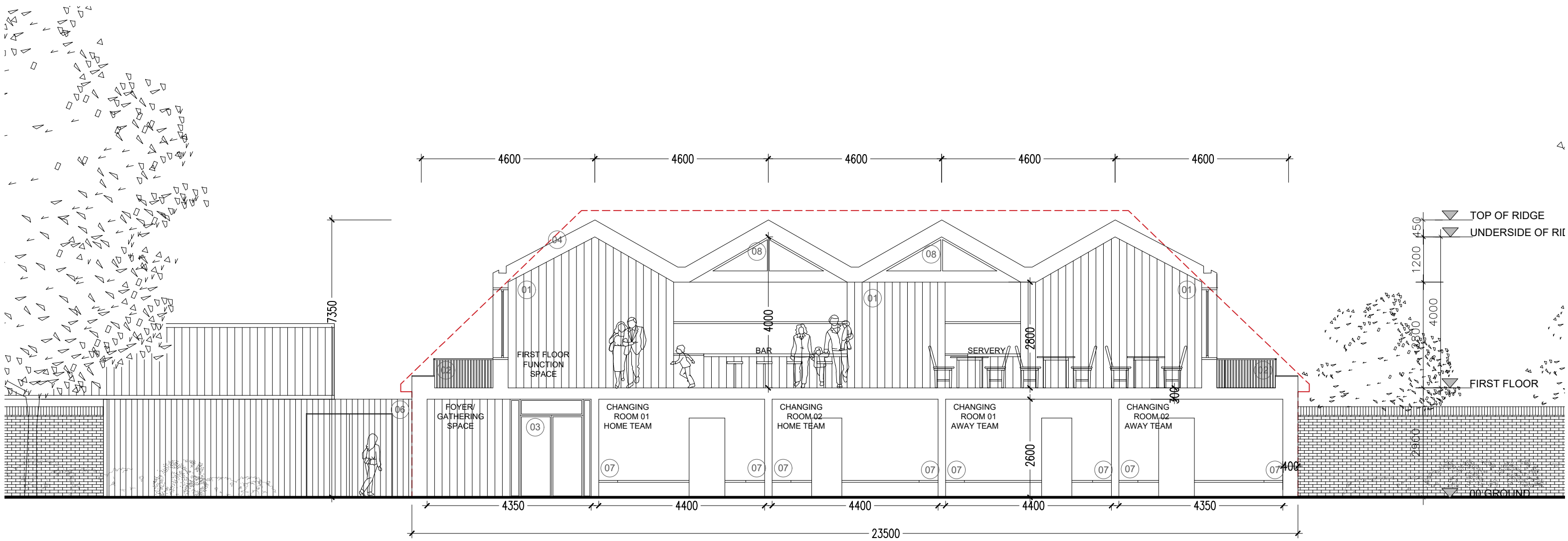


**MATERIALS :**

- 01 Timber vertical cladding panels in natural birch finish.
- 02 Brushed metal, slim profile balustrade - RAL to match dark charcoal timber cladding.
- 03 High performing low emissivity glass doors with dark grey slim metal frames - RAL to match cladding.
- 04 Dark charcoal vertical standing seam metal cladding system with metal profiles, projecting metal fin detail. First floor and roof only.
- 05 Scoreboard with officials desk from balcony.
- 06 Timber enclosure to external storage/ tank access - RAL to match Charcoal timber cladding.
- 07 Timber change benches
- 08 High level clerestory windows above flat roof to kitchen/ bar area.



# Aros

**Aros Architects**  
Jerwood Space  
171 Union Street  
London SE1 0LN

**Telephone**  
+44(0)20 7928 2444  
**Facsimile**  
+44(0)20 7928 2450

**Email**  
info@arosarchitects.com  
**Website**  
www.arosarchitects.com

**Notes**

1. All dimensions are to be verified by the Contractor on site, any discrepancies in this drawing are to be reported to Aros Ltd
2. The Contractor shall not vary any work shown on this drawing without prior approval in writing from Aros Ltd.
3. The Contractor shall supply a full set of shop drawings and specifications prior to commencement of work.
4. This drawing supersedes all previous issues of the same drawing number with an earlier revision suffix.
5. The Contractor shall immediately inform Aros Ltd of the effect upon the programme and costs of any alterations to the proposed works shown on this drawing.
6. This drawing is the copyright of Aros Ltd and the contents must not be disclosed to other parties without prior agreement.

**Revisions**

Rev	Date	Drawn	Checked	Description
	XX.XX.XX			

Project  
**HWRCC PAVILION**

Title  
**Proposed Cross Section 01**

Project No  
**6344**

Date  
**MAY 2024**

Status  
**PLANNING**

Drawing No  
**(20) 300**

Scale  
**1:100 @ A3**

Rev  
**P1**