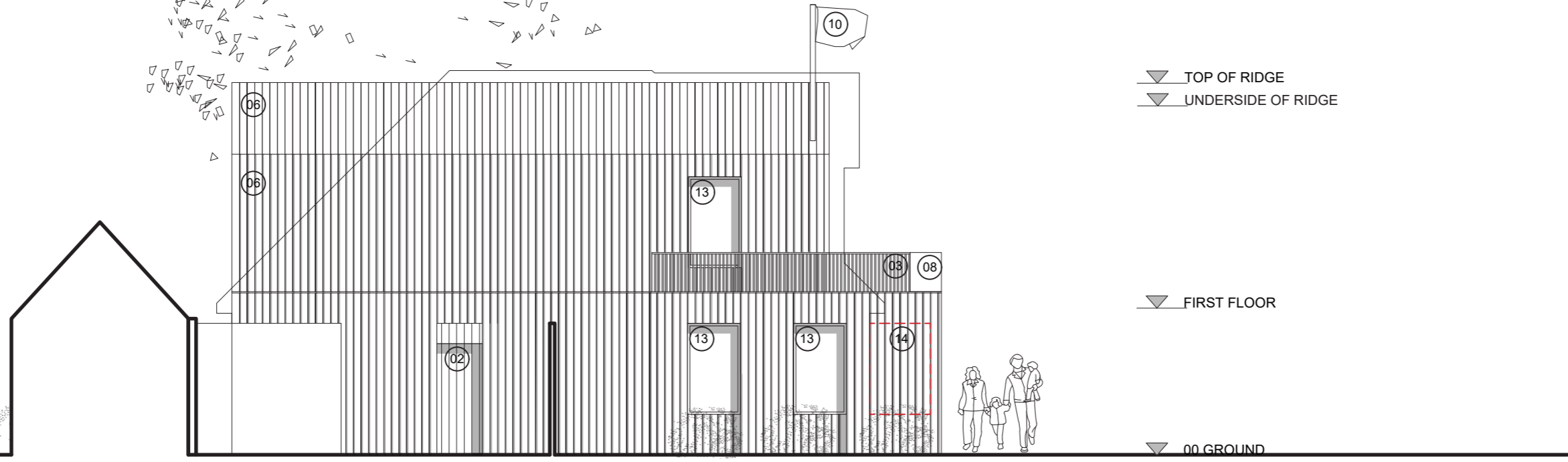
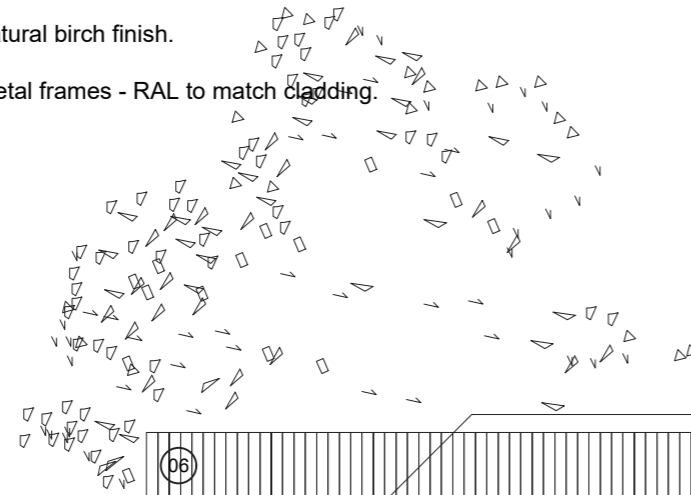


MATERIALS :

- 01 Timber vertical cladding panels in dark charcoal black finish.
- 02 Timber vertical cladding panels in natural birch finish.
- 03 Brushed metal, slim profile balustrade - RAL to match dark charcoal timber cladding.
- 04 Brushed Metal cladding panels - RAL to match dark charcoal timber cladding.
- 05 High performing low emissivity glass doors with dark grey slim metal frames - RAL to match cladding.
- 06 Dark charcoal vertical standing seam metal cladding system with metal profiles, projecting metal fin detail. First floor and roof only.
- 07 Steel beam to be painted in same RAL to match metal frame to glass sliding doors.
- 08 Scoreboard with officials desk from balcony.
- 09 Treated privacy glass to changing room windows.
- 10 Flag mast/post.
- 11 Sliding timber security door - Timber vertical cladding panels in natural birch finish.
- 12 Timber window seat - Timber vertical cladding panels in natural birch finish.
- 13 High performing low emissivity glass with dark grey slim metal frames - RAL to match cladding.
- 14 HWRCC Logo - White brushed metal finish.



ALLOTMENTS

ALLOTMENT MANAGEMENT OFFICE

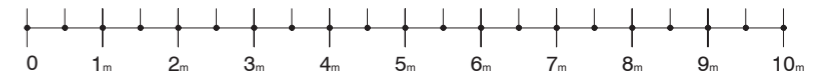
PROPOSED PAVILION

▽ TOP OF RIDGE
▽ UNDERSIDE OF RIDGE

▽ FIRST FLOOR

▽ 00 GROUND

Scale Bar 1:100



Aros Architects
Jerwood Space
171 Union Street
London SE1 0LN

Telephone
+44(0)20 7928 2444
Facsimile
+44(0)20 7928 2450

Email
info@arosarchitects.com
Website
www.arosarchitects.com

Notes

1. All dimensions are to be verified by the Contractor on site, any discrepancies in this drawing are to be reported to Aros Ltd.
2. The Contractor shall not vary any work shown on this drawing without prior approval in writing from Aros Ltd.
3. The Contractor shall supply a full set of shop drawings and specifications prior to commencement of work.
4. This drawing supersedes all previous issues of the same drawing number with an earlier revision suffix.
5. The Contractor shall immediately inform Aros Ltd of the effect upon the programme and costs of any alterations to the proposed works shown on this drawing.
6. This drawing is the copyright of Aros Ltd and the contents must not be disclosed to other parties without prior agreement.

Revisions

Rev	Date	Drawn	Checked	Description
	XX.XX.XX			

Project
HWRCC PAVILION

Title
**PROPOSED NORTH ELEVATION -
CAR PARK FACING ELEVATION**

Project No
6344
Date
MAY 2024
Status
PLANNING

Drawing No
(20) 402
Scale
1:100 @ A3
Rev
P1