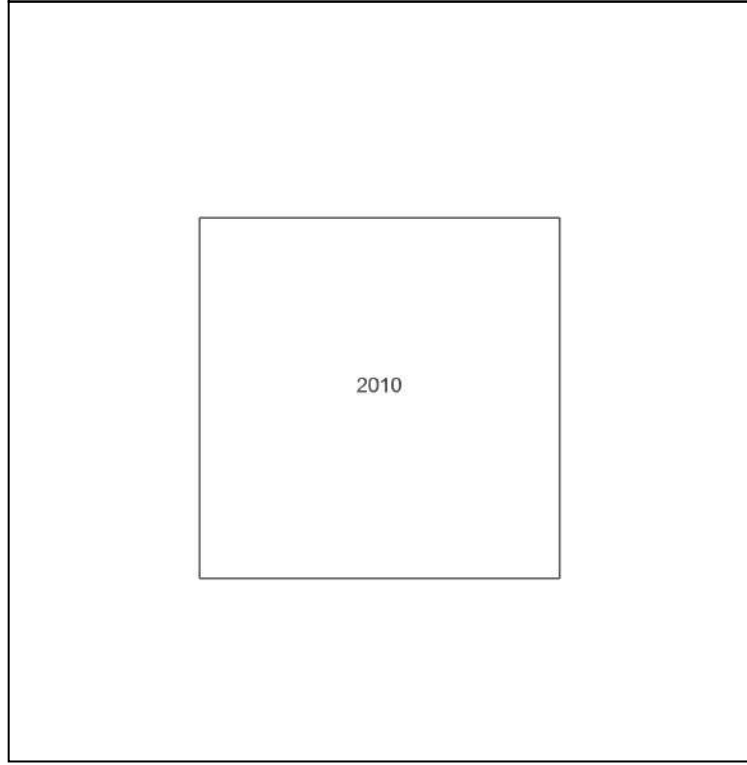
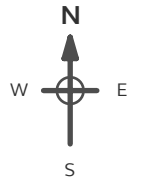


Site Details:
 42, HIGH STREET,
 TEDDINGTON, TW11 8EW

Client Ref: GGC18675
Report Ref: HMD-5503219
Grid Ref: 516088, 171100

Map Name: National Grid
Map date: 2010
Scale: 1:10,000
Printed at: 1:10,000

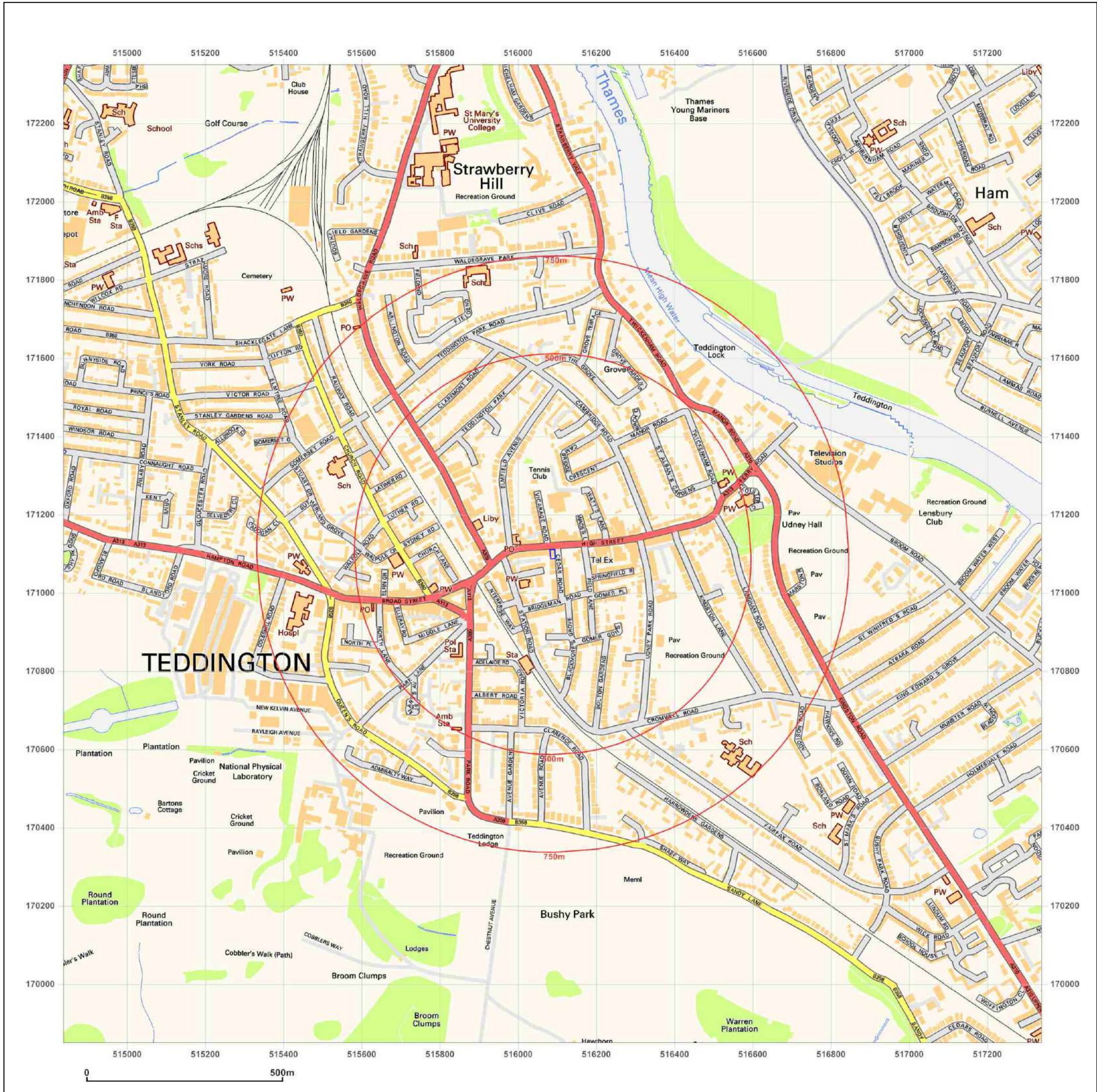


Produced by
 Groundsure Insights
 T: 08444 159000
 E: info@groundsure.com
 W: www.groundsure.com

© Crown copyright and database rights 2018 Ordnance Survey 100035207

Production date: 04 October 2018

Map legend available at:
www.groundsure.com/sites/default/files/groundsure_legend.pdf



Site Details:

42, HIGH STREET,
TEDDINGTON, TW11 8EW

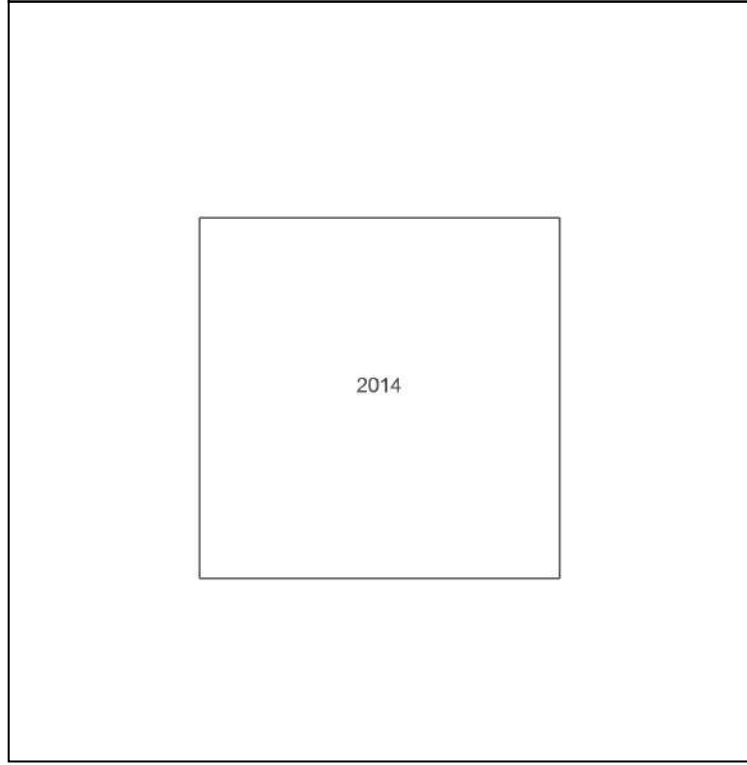
Client Ref: GGC18675
Report Ref: HMD-5503219
Grid Ref: 516088, 171100

Map Name: National Grid

Map date: 2014

Scale: 1:10,000

Printed at: 1:10,000

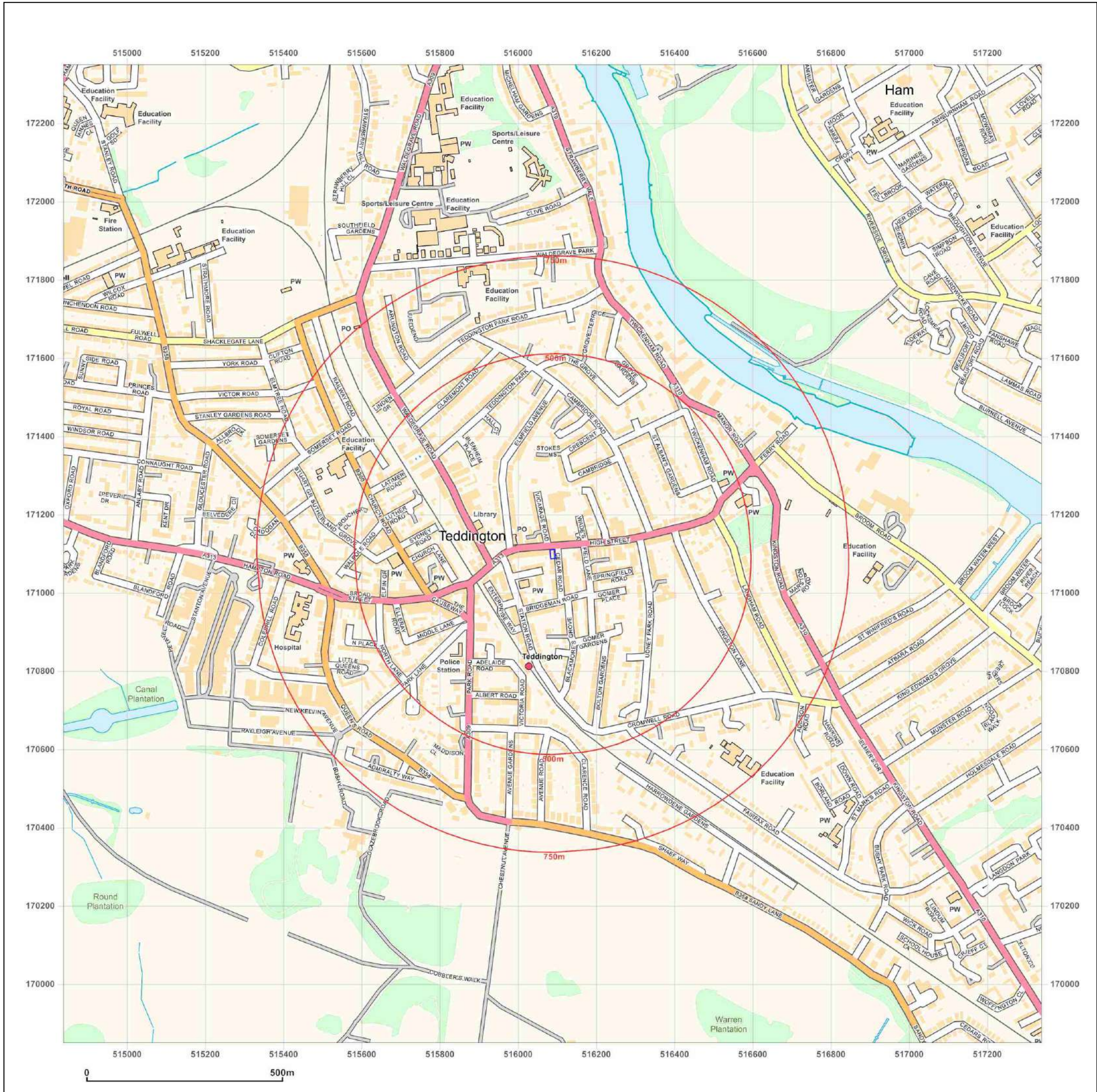


Produced by
Groundsure Insights
T: 08444 159000
E: info@groundsure.com
W: www.groundsure.com

© Crown copyright and database rights 2018 Ordnance Survey 100035207

Production date: 04 October 2018

Map legend available at:
www.groundsure.com/sites/default/files/groundsure_legend.pdf



APPENDIX F

Ground Investigation Results:

- Figure GI-01 Borehole Location Plan
- Figure GI-02 Borehole Log – BH1
- Standard Penetration Test Results sheet.



www.gabrielgeo.co.uk
T: 01580 241044

Site
42 High Street, Teddington TW11 8EW

Borehole Number
1

Boring Method Cable Percussion	Casing Diameter 150mm cased to 6.00m	Ground Level (mOD) 8.22	Client Unico Developments Ltd	Job Number 18675
	Location Parking area to rear of No.42	Dates 12/10/2018	Engineer Green Structural Engineering Ltd	Sheet 1/1

Depth (m)	Sample / Tests	Casing Depth (m)	Water Depth (m)	Field Records	Level (mOD)	Depth (m) (Thickness)	Description	Legend	Water
0.25-0.35 0.35-0.45 0.50-0.60 0.60-0.70	D1 TJ TJ D2				8.11 7.87 7.72	(0.11) (0.24) (0.35) (0.15) (0.50)	Brick paving (65mm thick) over sharp sand bedding. MADE GROUND: Multi-coloured (dark grey overall, locally red, black and brownish grey) slightly clayey, sandy GRAVEL. Gravel consists predominantly of lightweight clinker and brick fragments, with some half & whole bricks, glass and concrete. Clay content increases slightly with depth. At 0.35m: 300mm fragment of concrete.		
1.00-1.45 1.00-1.50	SPT N=46 B1			2,2/6,13,14,13	7.07	1.15	MADE GROUND: Moist, dark brownish grey, sandy, very gravelly CLAY to sandy, very clayey GRAVEL. Gravel consists of brick fragments, ceramics, concrete and flint. Transitions to: Soft to firm, orangey-reddish brown, locally mottled greyish brown, moist, slightly gravelly, very sandy CLAY. Sand is medium to coarse. Gravel consists of angular flint (generally <10mm, locally 40mm). (KEMPTON PARK GRAVEL MEMBER)		
2.00-2.45 2.00-2.50	SPT N=33 B2			4,4/6,8,8,11		(2.95)	Dense, orangey brown, sandy, fine to coarse GRAVEL with occasional cobbles. Gravel and cobbles consists of angular to sub-angular flint. Sand is predominantly coarse. Minimal fines present. (KEMPTON PARK GRAVEL MEMBER)		
3.00-3.45 3.00-3.50	SPT N=47 B3			4,6/9,11,13,14					
4.00-4.45 4.10-4.20	SPT N=17 D3			2,2/3,4,5,5	4.12	4.10	Firm to stiff, fissured, greyish brown mottled orangey brown and locally reddish orange, silty CLAY. Fissure surfaces are smooth/slightly polished. (WEATHERED LONDON CLAY FORMATION)		
4.30-4.40	D4				3.82	4.40	Below 4.20m: Mid grey mottled orangey brown and locally reddish orange. Transitions to:		
4.50-5.00	D5								
5.00-5.45 5.00	SPT N=10 D6			2,2/2,2,3,3		(2.05)	Stiff to very stiff, fissured, mid grey, silty CLAY. Fissure surfaces are smooth and polished. Occasional fine crystals (mica/selenite?). Occasional slightly stronger 'relict' clay clasts. (LONDON CLAY FORMATION)		
5.50	D7								
6.00-6.45 6.00	SPT N=15 D8			2,3/3,4,4,4					
				12/10/2018:3.31m	1.77	6.45	Complete at 6.45m		

Remarks

- Hand dug inspection pit to 1.00m
 - No clear groundwater strike. Water added during drilling through gravels. Groundwater standing at 3.31m on completion.
 - Standpipe installed to 5.0m bgl: response zone = 1.00-5.00m, bentonite seal above 1.00m.
 - No roots observed.
- TJ = Tub & Jar Sample

Scale (approx)
1:40

Logged By
AG

Figure No.
GI-02



www.gabrielgeo.co.uk
T: 01580 241044

Standard Penetration Test Results

Site : 42 High Street, Teddington TW11 8EW

Job Number
18675

Client : Unico Developments Ltd

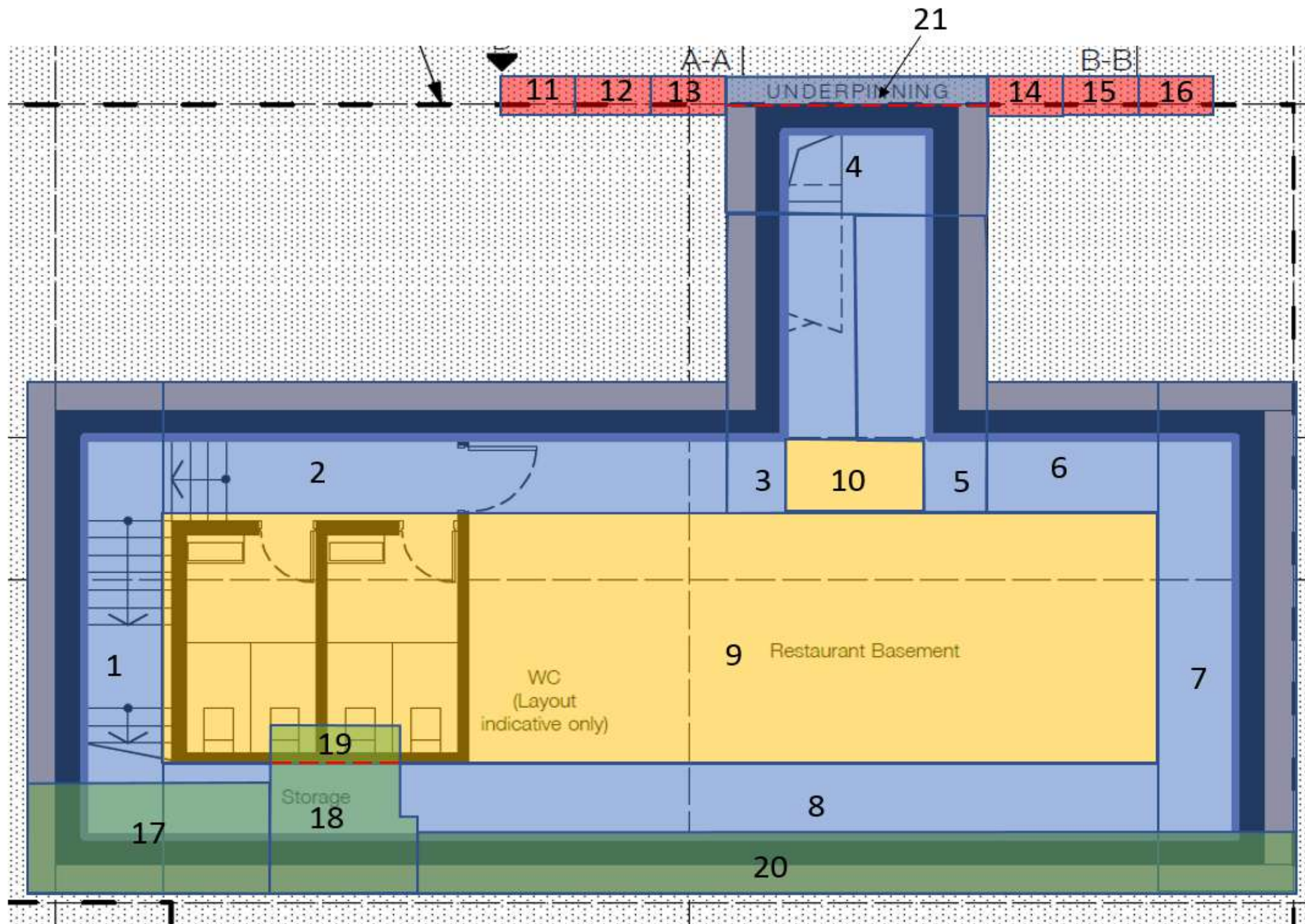
Sheet
1 / 1

Engineer : Green Structural Engineering Ltd

Borehole Number	Base of Borehole (m)	End of Seating Drive (m)	End of Test Drive (m)	Test Type	Seating Blows per 75mm		Blows for each 75mm penetration				Result	Comments
					1	2	1	2	3	4		
1	1.00	1.15	1.45	SPT	2	2	6	13	14	13	N=46	
1	2.00	2.15	2.45	SPT	4	4	6	8	8	11	N=33	
1	3.00	3.15	3.45	SPT	4	6	9	11	13	14	N=47	
1	4.00	4.15	4.45	SPT	2	2	3	4	5	5	N=17	
1	5.00	5.15	5.45	SPT	2	2	2	2	3	3	N=10	
1	6.00	6.15	6.45	SPT	2	3	3	4	4	4	N=15	

APPENDIX G

PDISP Heave/Settlement Analysis Figures



Plan taken from Chandler Browne Architects' 'Basement Plan Proposed' (Drg No. 01/A/1001, P12)

Zones 11 - 16 = Transition Pins

Project: **42 High Street, Teddington, TW11 8EW**

Title: **Layout of Zones used for PDISP Analyses**

Figure: **G1**

Date: November 2018

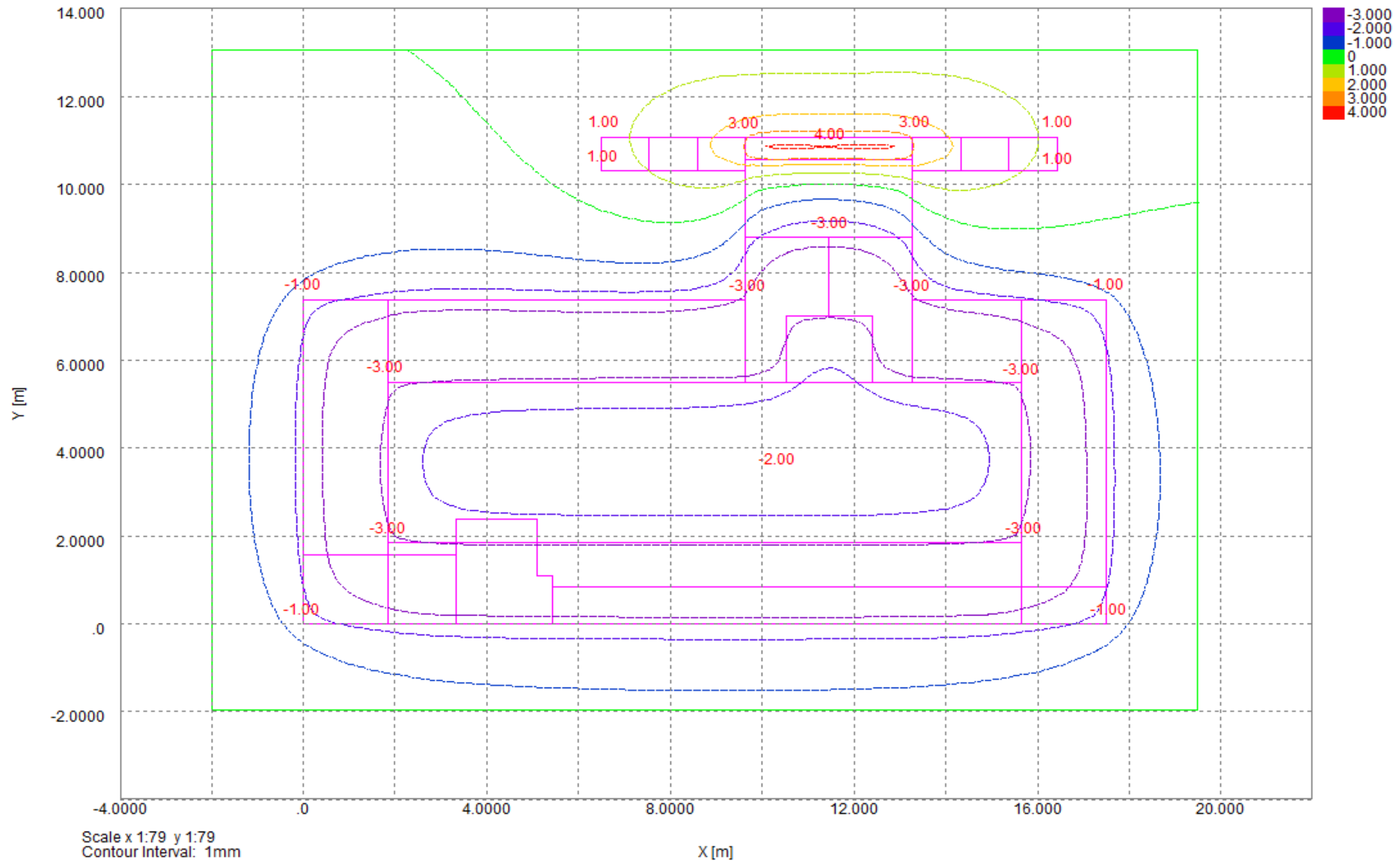
Checked: HB

Approved: KRG

Scale: NTS

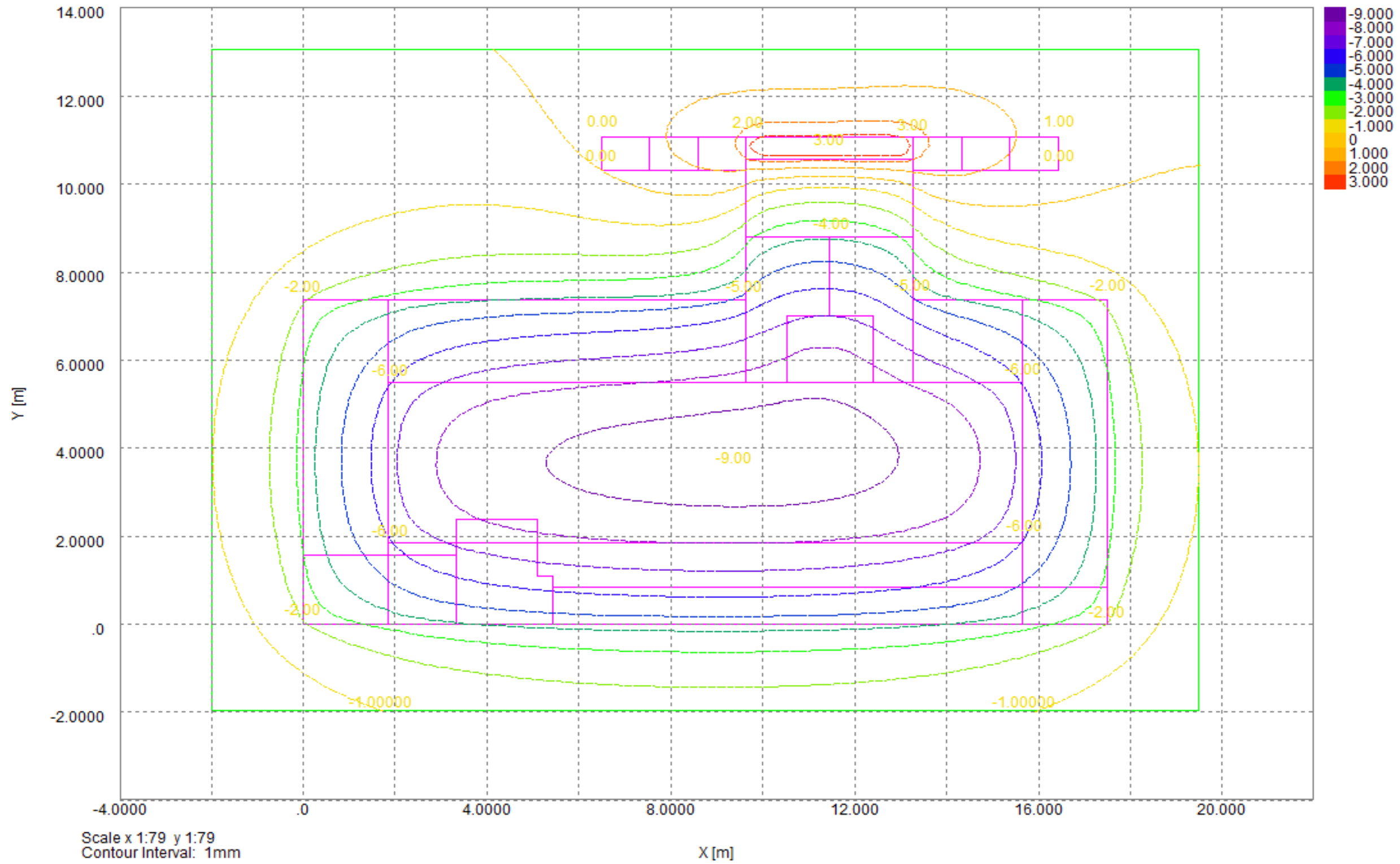


Settlement Contours : Grid 1 at 4.6900m

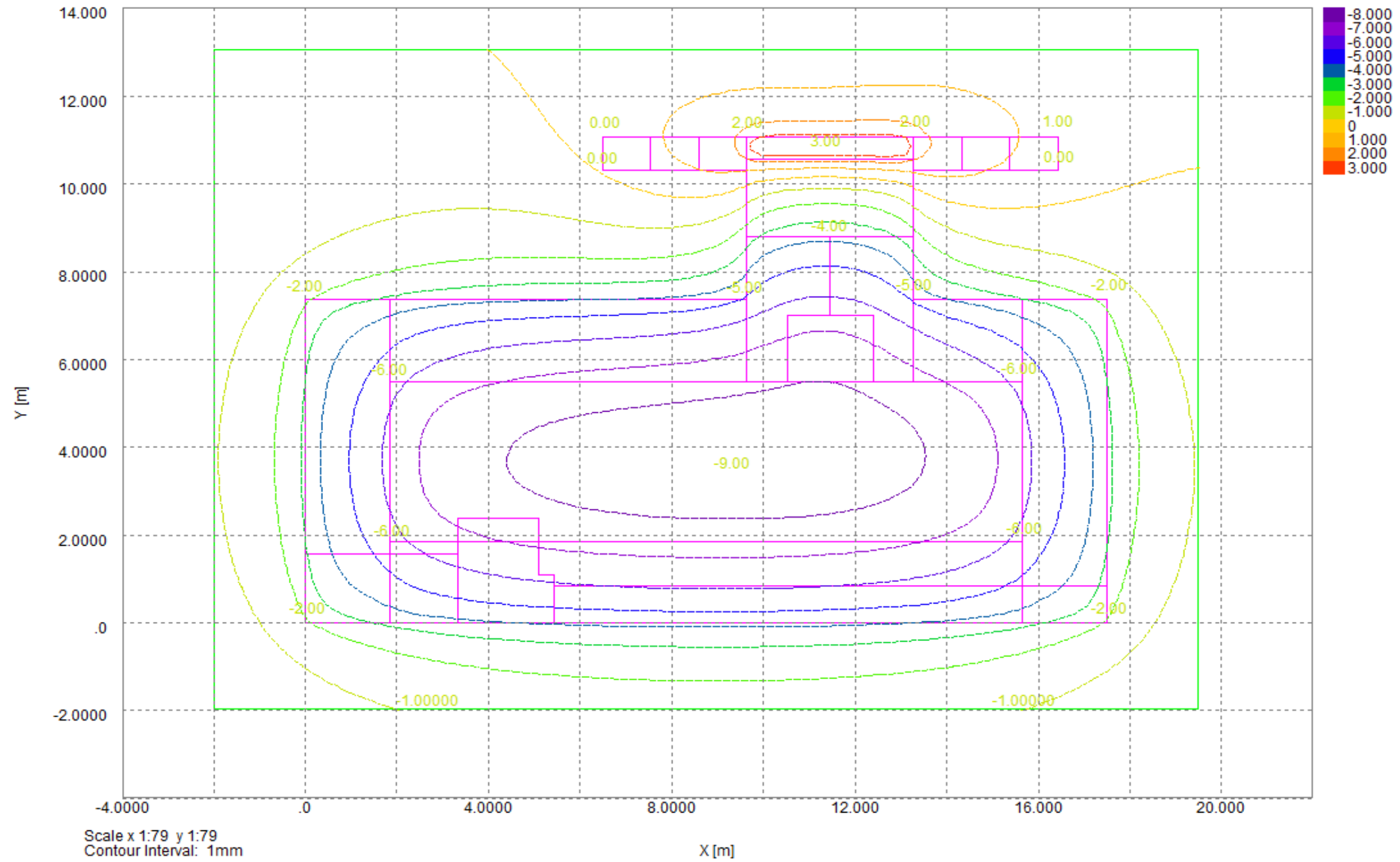


Scale x 1:79 y 1:79
Contour Interval: 1mm

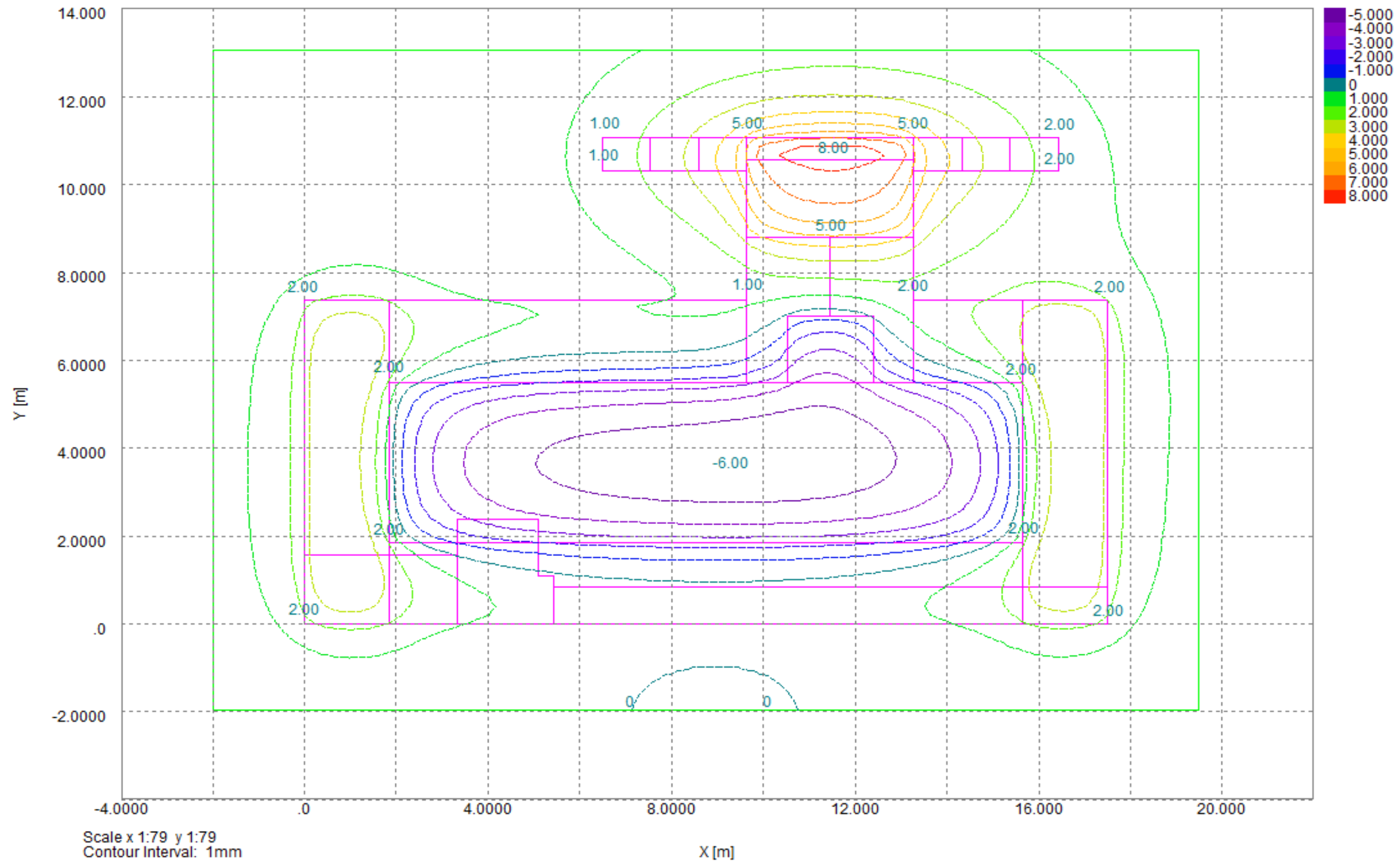
Settlement Contours : Grid 1 at 4.6900m



Settlement Contours : Grid 1 at 4.6900m



Settlement Contours : Grid 1 at 4.6900m



Settlement Contours : Grid 1 at 4.6900m

