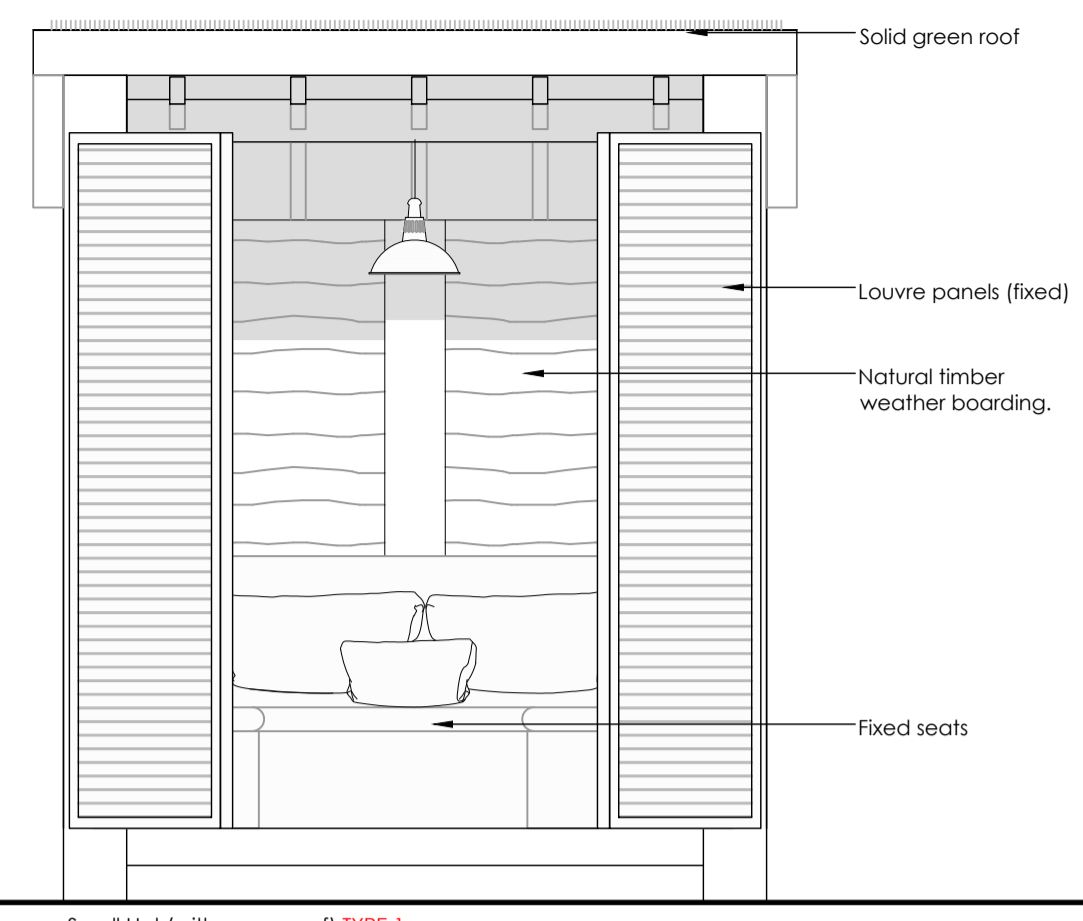
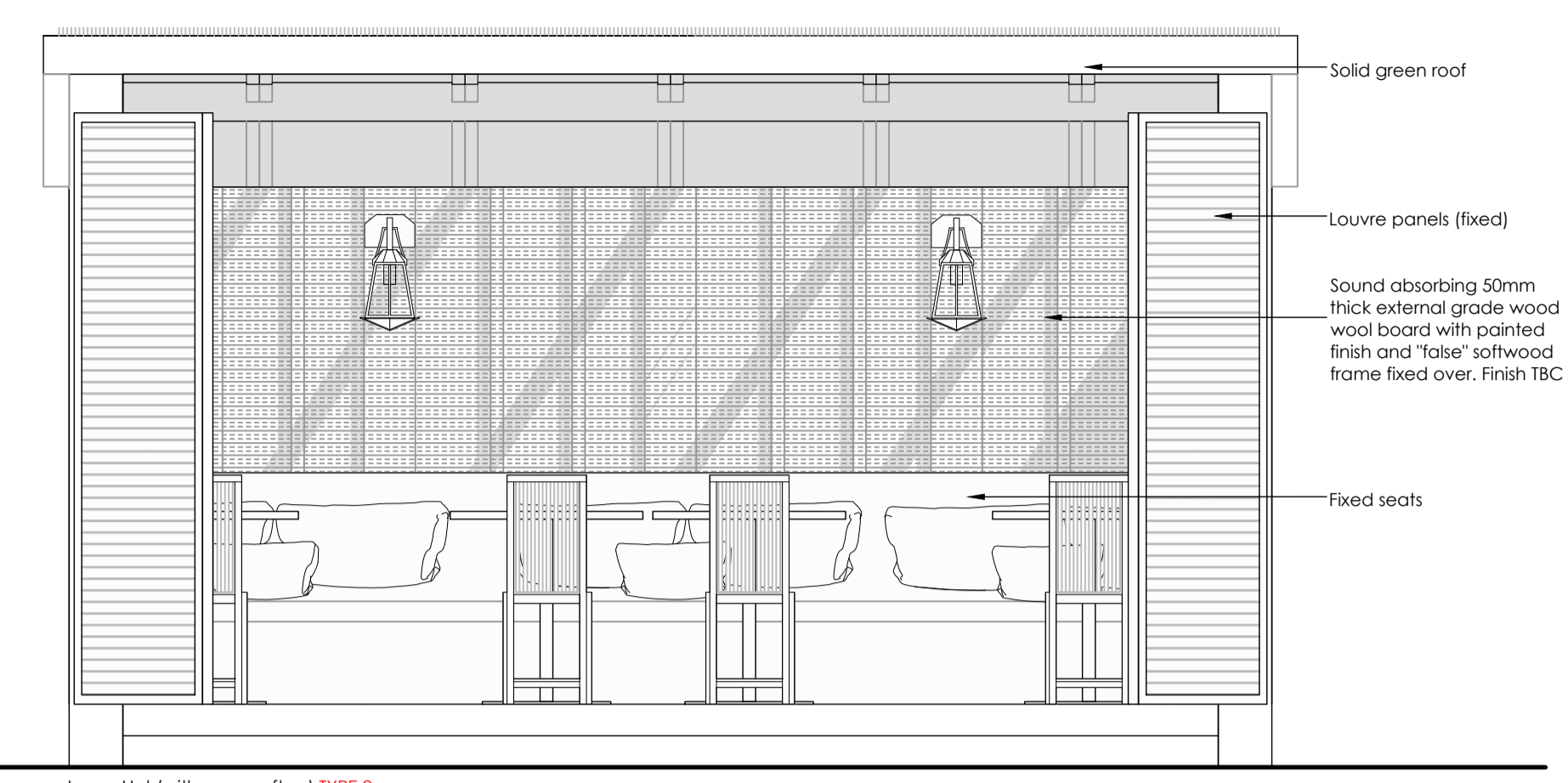


Small Hut (typical) PLAN
 Scale 1:250A1 / 1:500A3
 Timber framed with small roof overhang at front.
 Natural timber weatherboarding to inner and outer faces of closed roof units and painted wood wool boards to inner face of open roof units.
 Suggested woodwool supplier: Ty-Mawr - www.ty-mawr.co.uk - 01874 611350
 Louvre panels to dress open frontage.
 Fixed seats along sides and back.

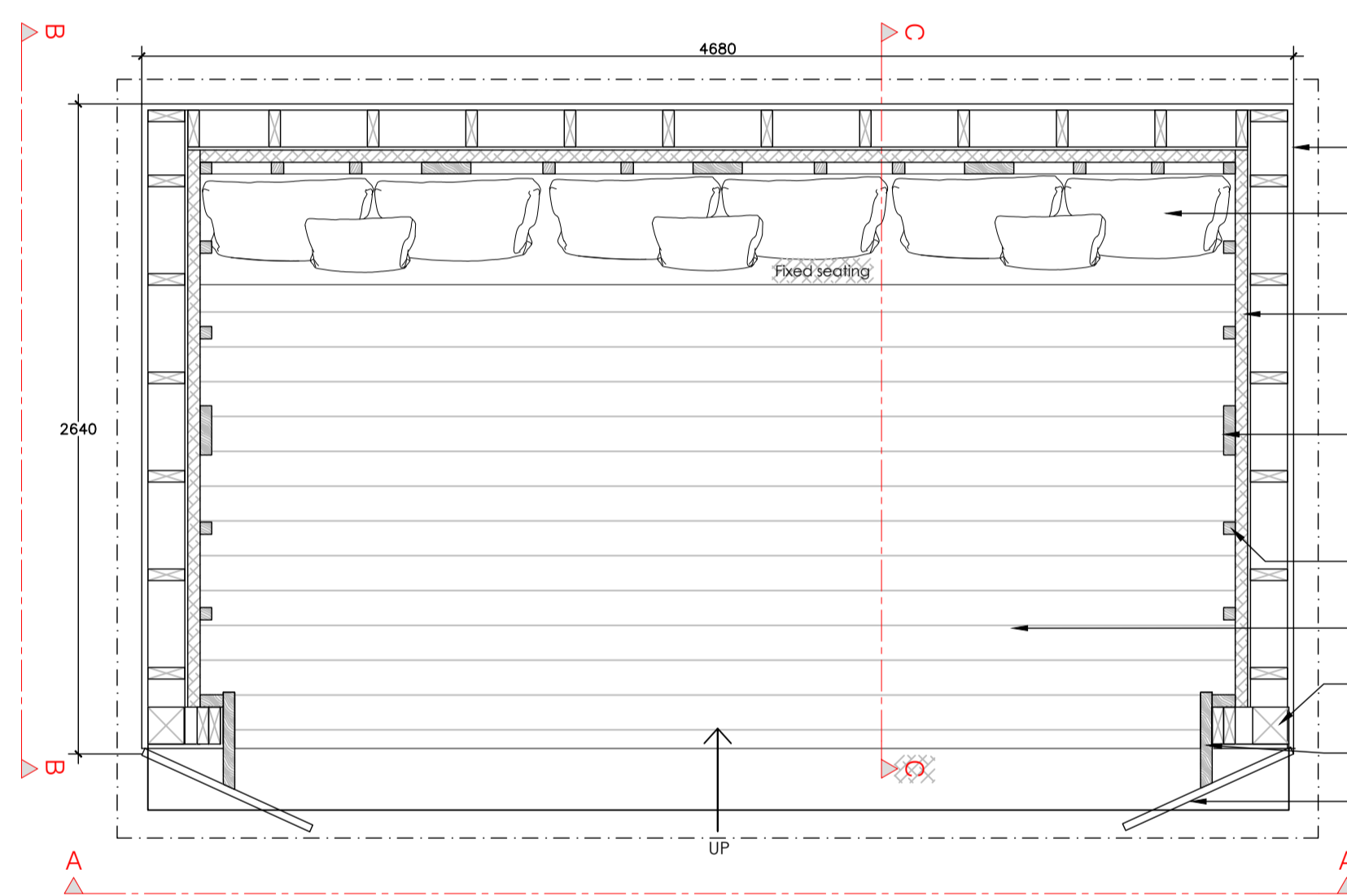
Floor joists: 47x200 C16 @400c/c with double 47 x 220mm C24 joists beams spanning between pad foundations to Str. Eng. info
 Stud walls: 47/150mm C16 @ 400c/c lined in 12mm thick ply on one side of stud.
 Rafters: 47x200mm C16 sections in, at 400mm centres
 Timber sole plate on DPC
 Pad footings to Str. Eng. details



Small Hut (with green roof) TYPE 1 VIEW A
 Scale 1:250A1 / 1:500A3
 Timber louvred panels set at angle to open fronts of huts, to 'dress' frontage; Mono-pitched green roof.
 Floor joists: 47x200 C16 @400c/c with double 47 x 220mm C24 joists beams spanning between pad foundations to Str. Eng. info
 Stud walls: 47/150mm C16 @ 400c/c lined in 12mm thick ply on one face.
 Rafters: 47x200mm C16 sections in, at 400mm centres
 Timber sole plate on DPC
 Pad footings and pinn details to Str. Eng. details

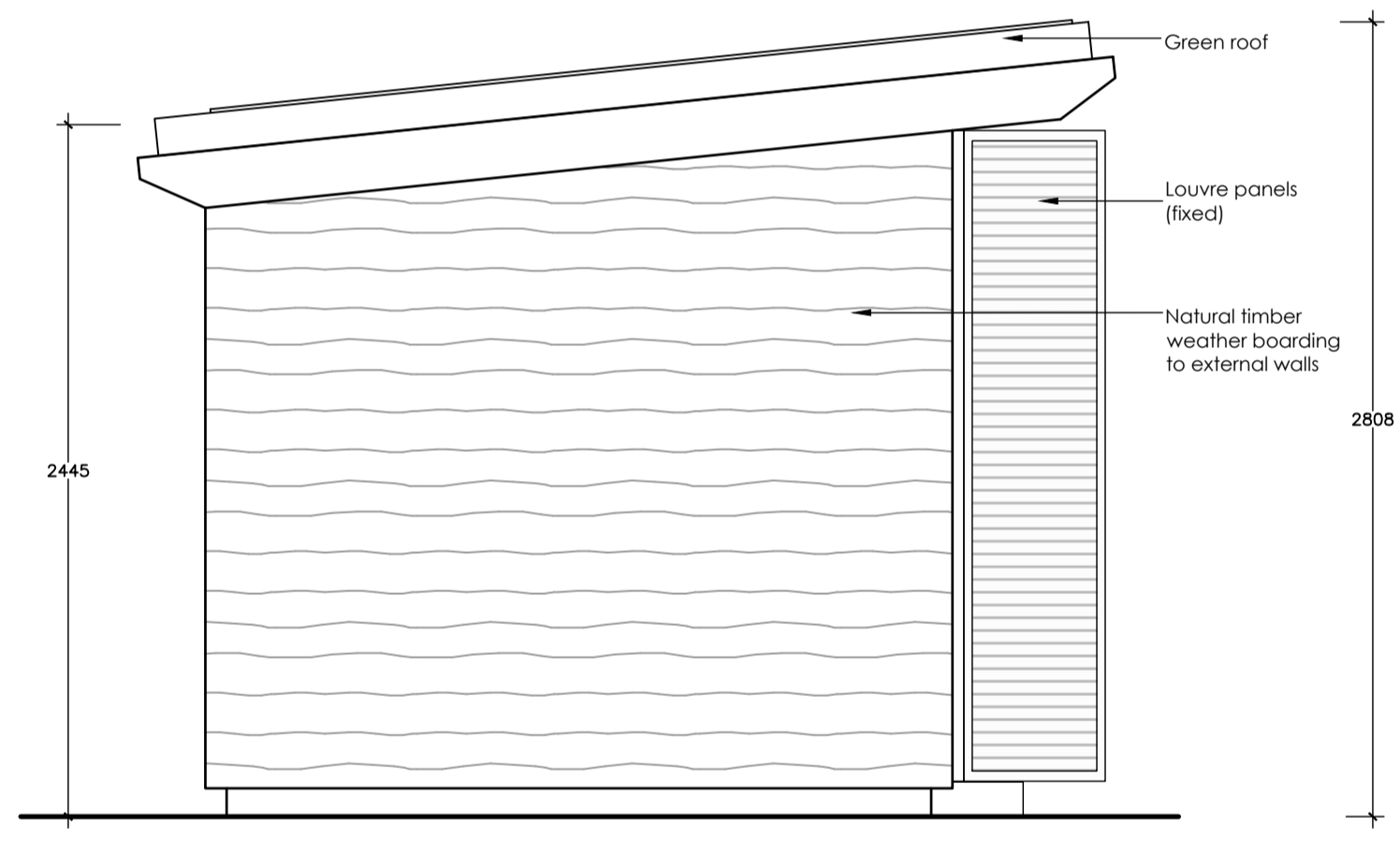


Large Hut (with open rafters) TYPE 2 VIEW A
 Scale 1:250A1 / 1:500A3
 Open fronted, huts with natural timber weatherboarding to outer faces. Solid green roof. Internal faces lined with sound absorbing boards. Fixed seats along back wall. Louvred panels at each end to 'dress' front elevation.
 Open rafters: 47x150mm C16 sections in pairs, at 800mm centres
 Floor joists: 47x200 C16 @400c/c with double 47 x 220mm C24 joists beams spanning between pad foundations to Str. Eng. info
 Stud walls: 47/150mm C16 @ 400c/c lined in 12mm thick ply on one face.
 Timber sole plate on DPC
 Pad footings and pinn details to Str. Eng. details

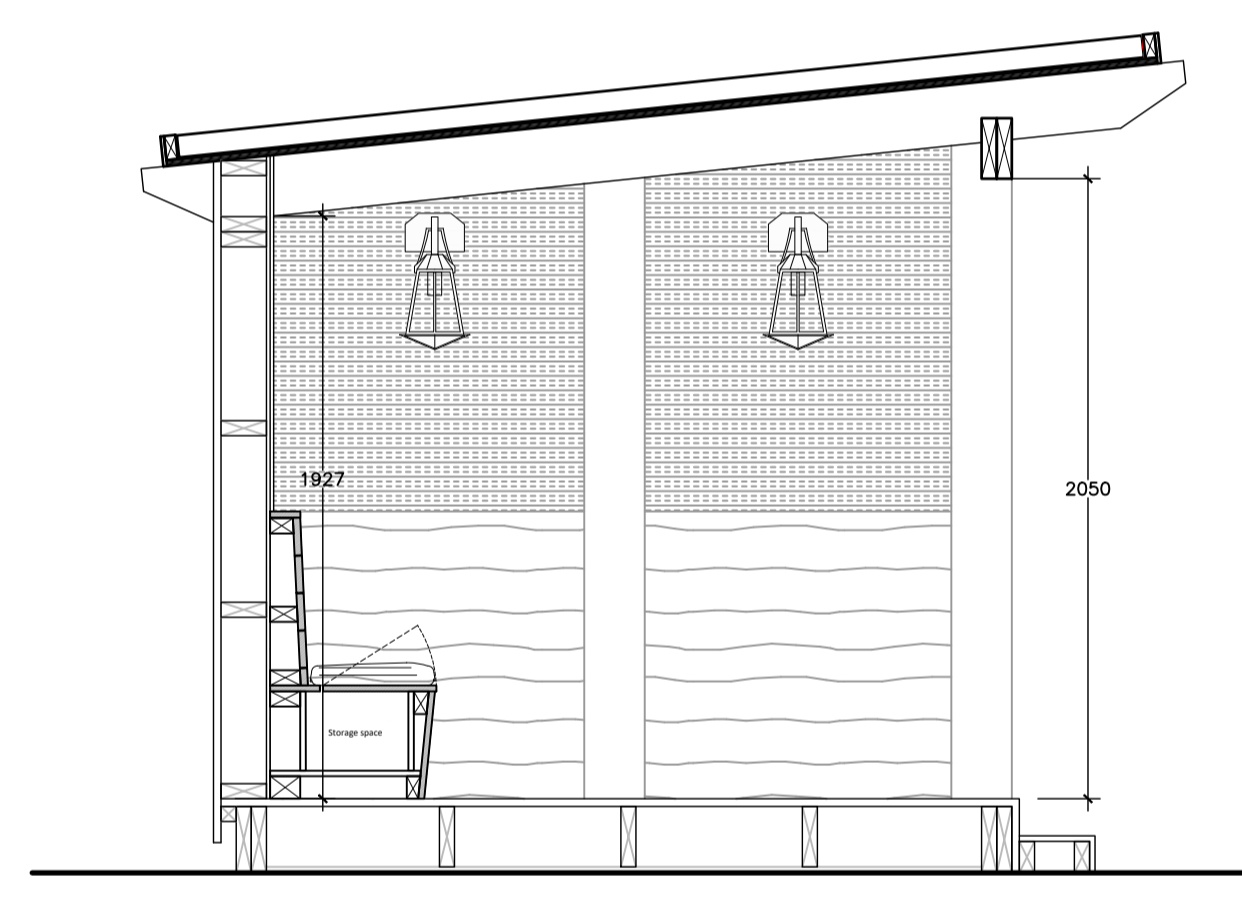


Large Hut (with open rafters) PLAN
 Scale 1:250A1 / 1:500A3
 Timber framed garden huts. Solid green roof. Natural timber weatherboarding to outer faces. Painted wood wool boards to inner face with false timber frame applied over. Suggested woodwool supplier: Ty-Mawr - www.ty-mawr.co.uk - 01874 611350
 Louvre panel to dress outer corners of front.

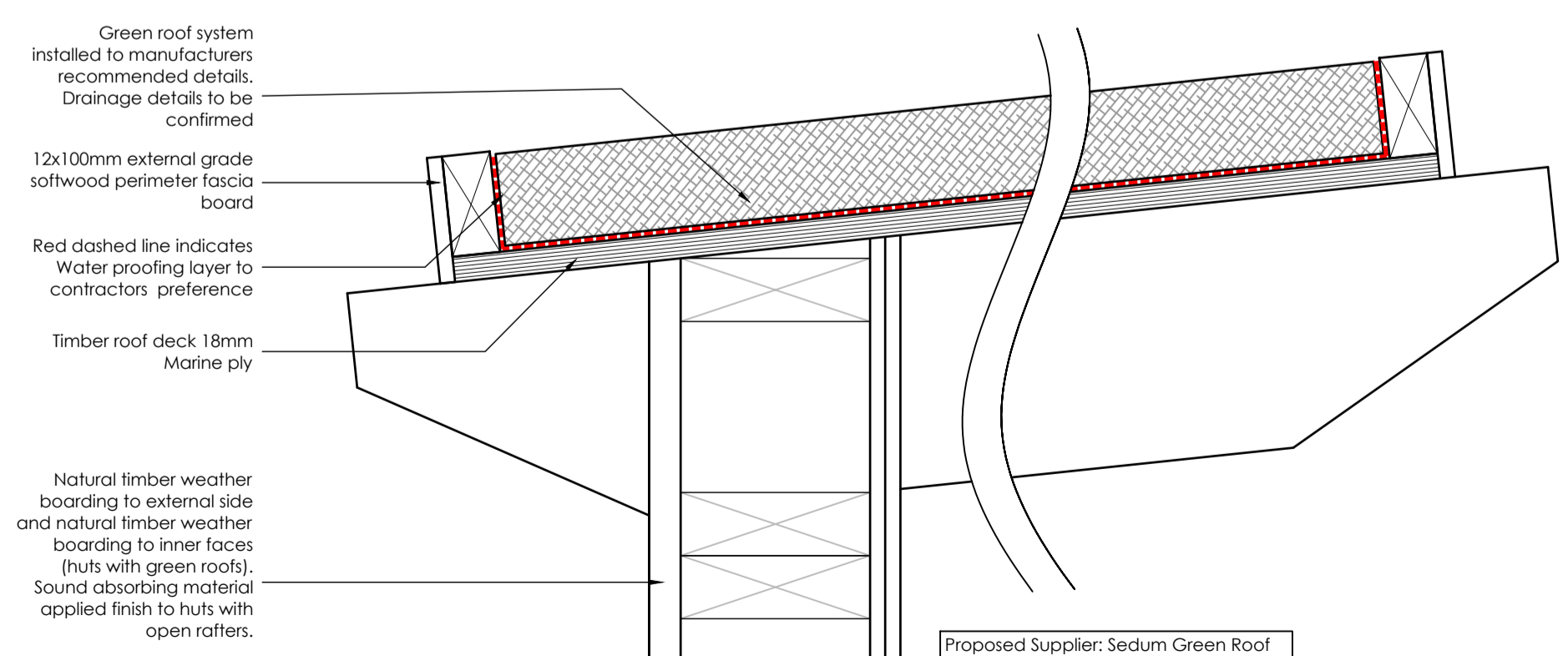
Open rafters: 47x150mm C16 sections in pairs, at 800mm centres
 Floor joists: 47x200 C16 @400c/c with double 47 x 220mm C24 joists beams spanning between pad foundations to Str. Eng. info
 Stud walls: 47/150mm C16 @ 400c/c lined in 12mm thick ply on one face.
 Timber sole plate on DPC
 Pad footings and pinn details to Str. Eng. details



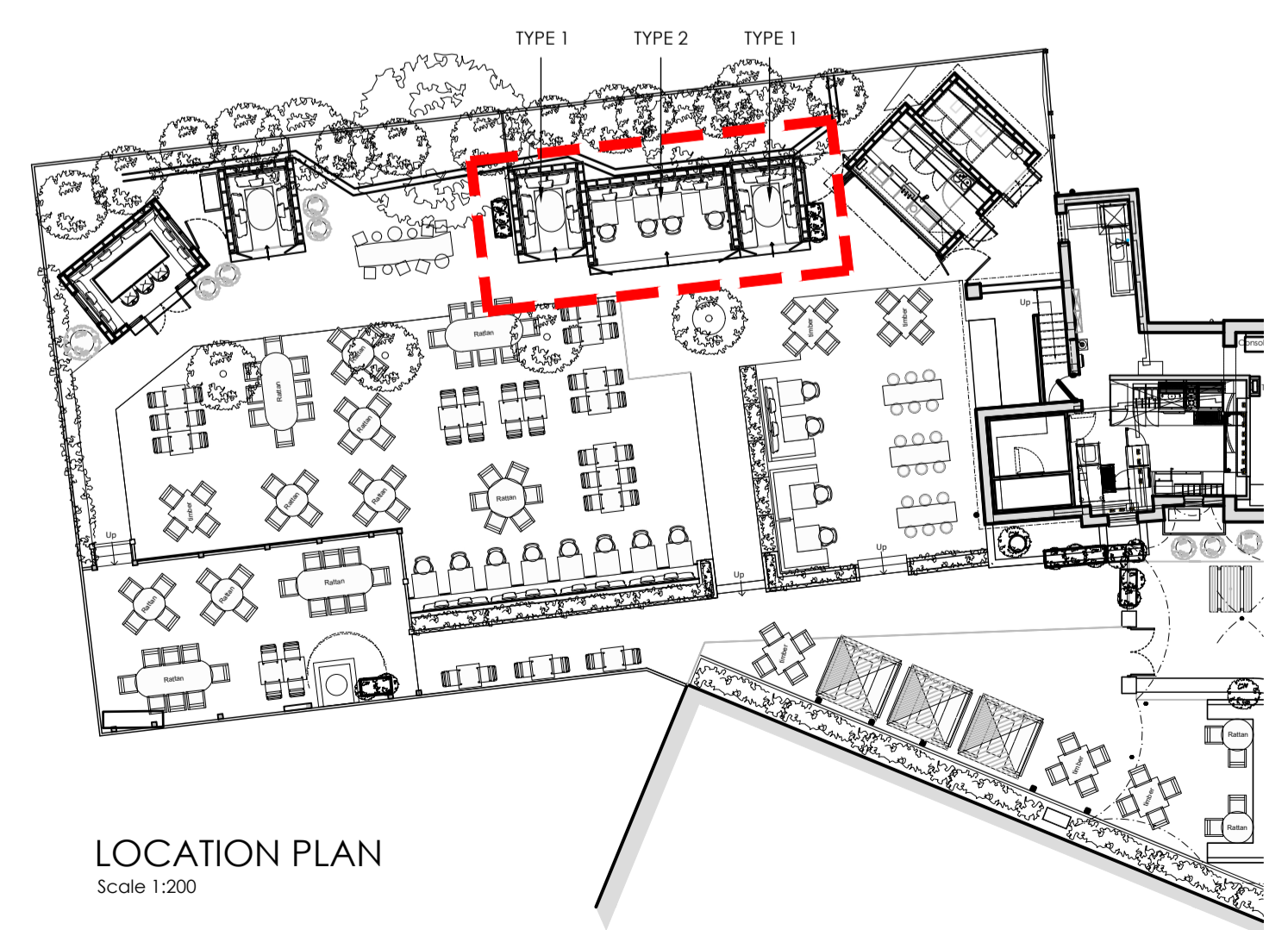
VIEW B (typical side elevation)
 Scale 1:250A1 / 1:500A3
 Timber clad with weatherboards to outer faces and green mono-pitched roofs (where relevant).



VIEW C (typical section)
 Scale 1:250A1 / 1:500A3
 Timber clad with weatherboards to outer faces and green mono-pitched roofs (where relevant).
 Rafters: 47x200mm C16 sections in, at 400mm centres
 Floor joists: 47x200 C16 @400c/c with double 47 x 220mm C24 joists beams spanning between pad foundations to Str. Eng. info
 Stud walls: 47/150mm C16 @ 400c/c lined in 12mm thick ply on one face.
 Timber sole plate on DPC
 Pad footings and pinn details to Str. Eng. details



Green Roof (Typical Detail)
 Scale 1:5@A1 / 1:10@A3



LOCATION PLAN
 Scale 1:200

PLANNING

Do not scale from this drawing. All dimensions are to be checked on site prior to manufacture & construction. Any discrepancies are to be relayed to KIRK NOLAN immediately.
 © KIRK NOLAN 2021.

KIRK + NOLAN

www.kirknolan.com

Client
YOUNG & Co.s BREWERY

Project
Hare & Hounds
 214-216 Upr Richmond Rd
 London SW14 8AH

Drawing
Garden Hut Details Proposed

First Issue
 Mar. 2022
 Scale
 1:25
 Sheet Size
 A1
 Drawn
 KN

Drawing No.
2420/2015
 Rev