

The Former Royal Oak, Ham Street, TW10 7HN

Discharge of Conditions

DC/KNP/24/0810/VRC/VRC

BD12	Details - Materials to be approved
U0182265	NS01 Specified details required
U0182268	NS04 Hard and Soft Landscaping

The Former Royal Oak, Ham Street, TW10 7HN

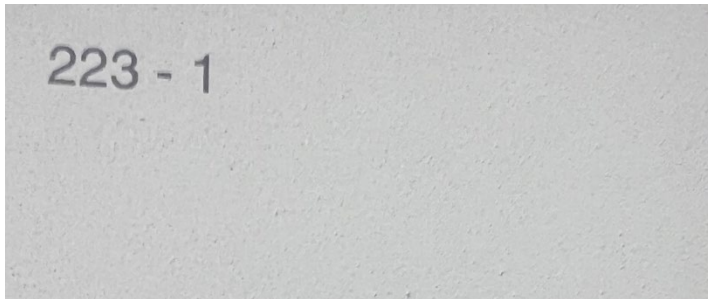
Material Schedule:

Discharge of Conditions – BD12 Details - Materials to be approved

Sandy Lane Elevation

Render

Licata Silicone Siloxan 1.5mm render - colour 223-1.



Coping Stones

Flat Concrete - Light Grey Coping Stone - 450mm x 600mm



Gate

Iron/steel frame with hardwood vertical infill - Sliding tracked.

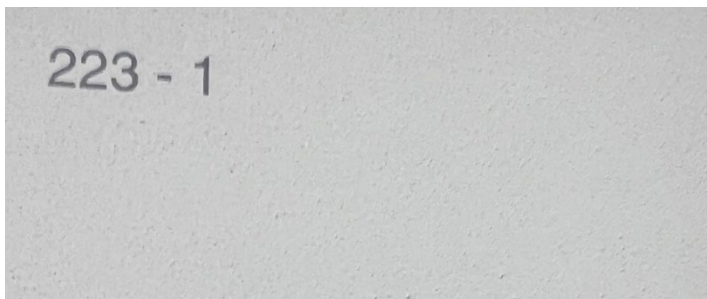


Ham street elevation

Render

Brickwork on Ham Street rendered identically to that of Sandy Lane

Licata Silicone Siloxan 1.5mm render - colour 223-1.



Landscaping

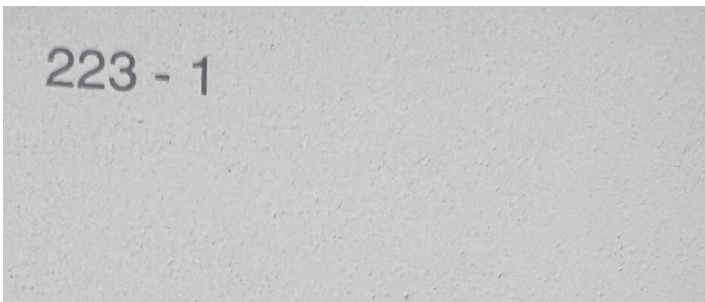
Courtyard Surface

Permeable resin bound surfacing in colour Nordic grey

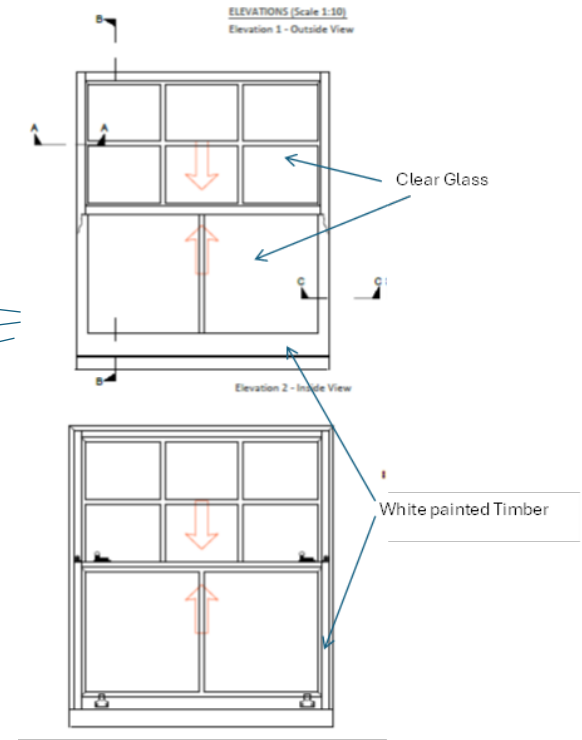
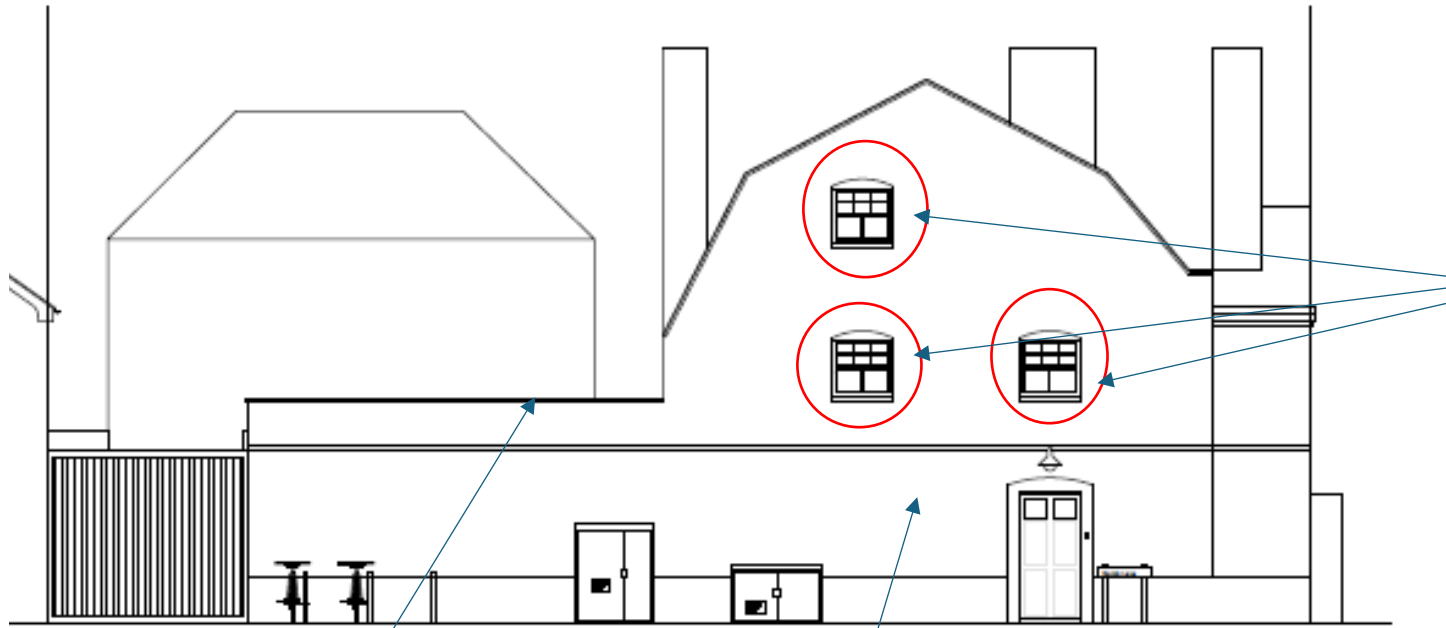


Courtyard Wall

Block work rendered in Licata Silicone Siloxan 1.5mm render - colour 223-1



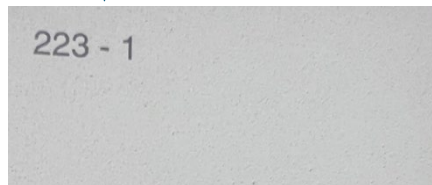
SANDY LANE ELEVATION – NORTH



Flat Concrete - Light Grey Coping Stone - 450mm x 600mm



Licata Silicone Siloxan 1.5mm render - colour 223-1

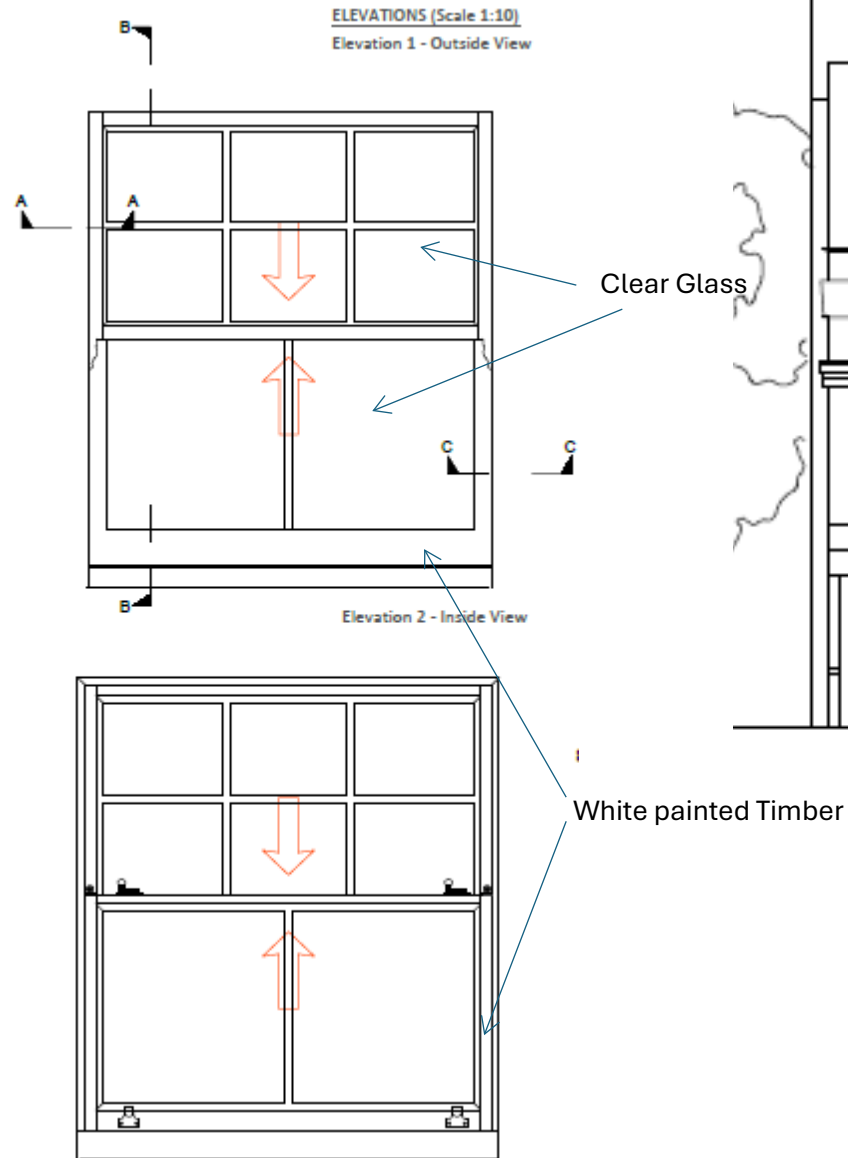


Drawing no:

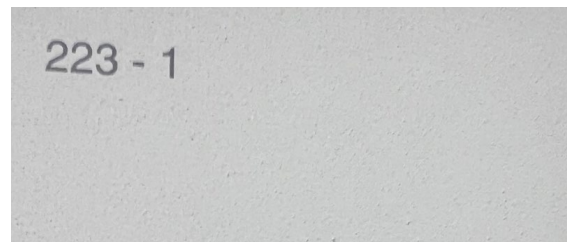
DoC 401

June 2024

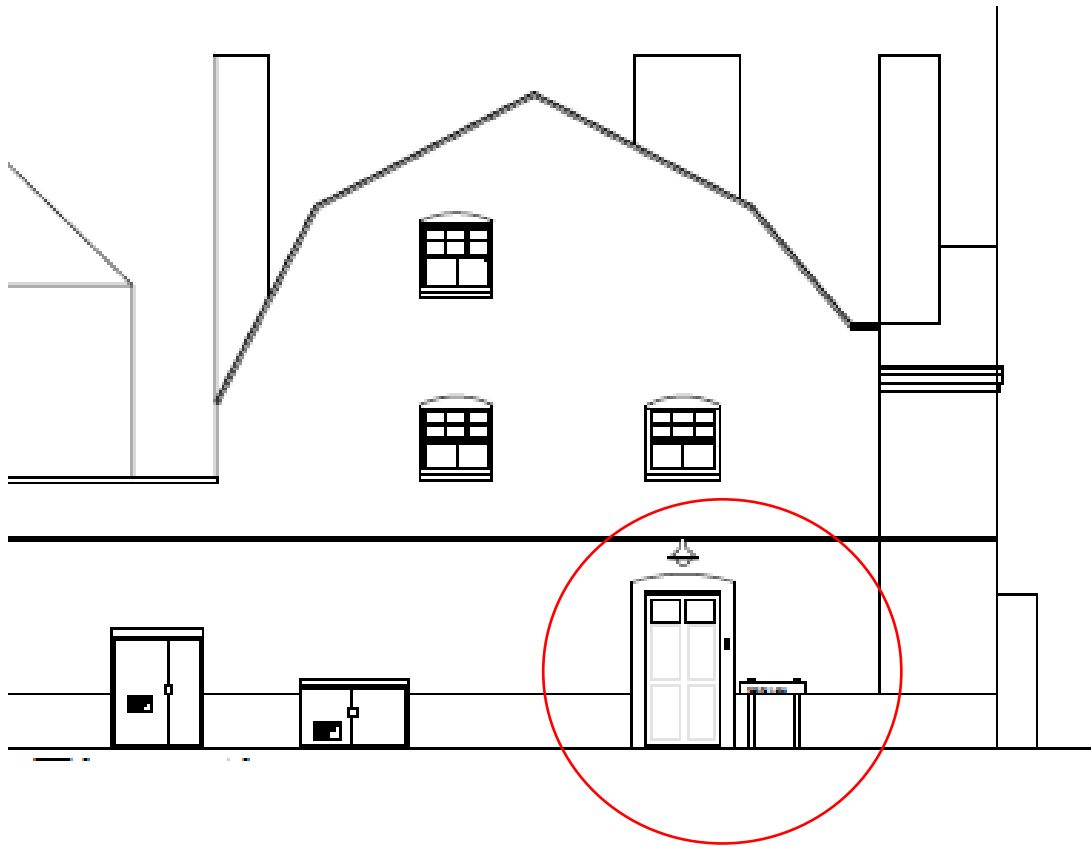
HAM STREET ELEVATION - WEST



Brickwork on Ham Street rendered identically to that of Sandy Lane
Licata Silicone Siloxan 1.5mm render - colour 223-1.



SANDY LANE ELEVATION - NORTH

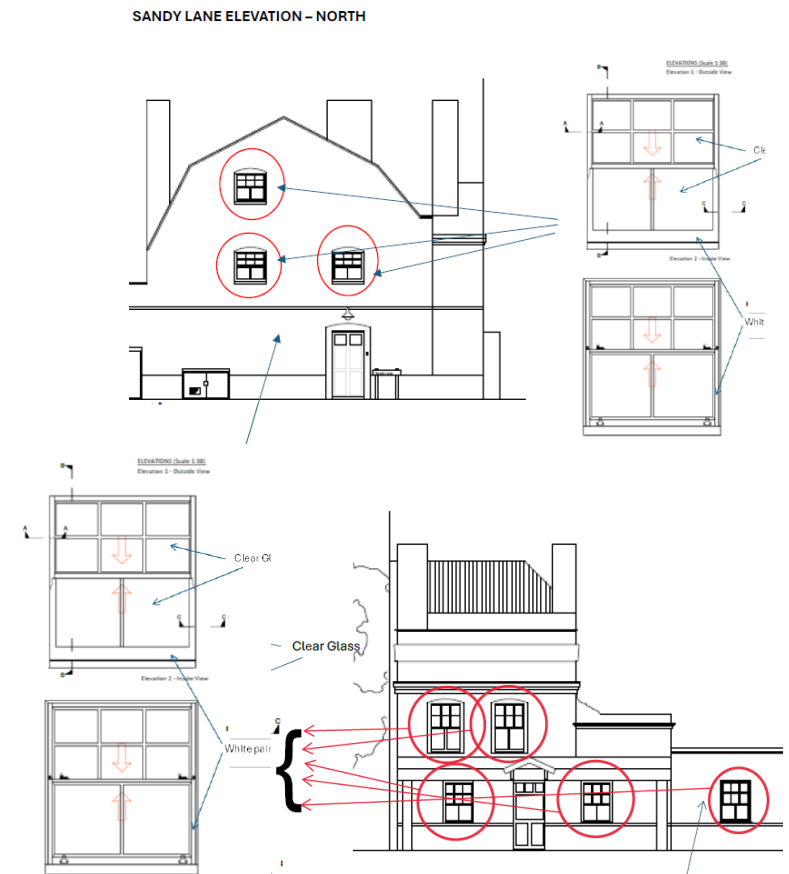
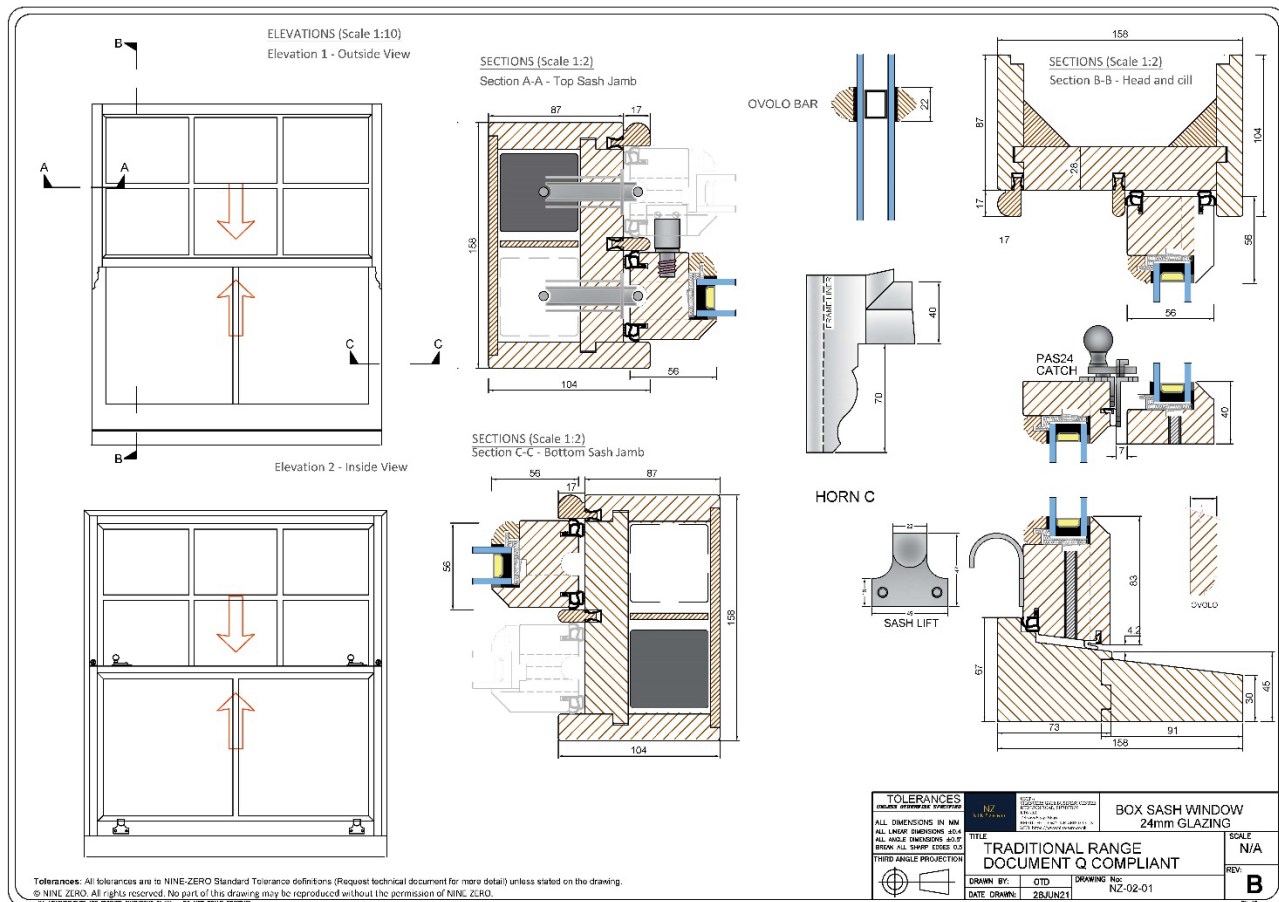


Part glazed panelled door

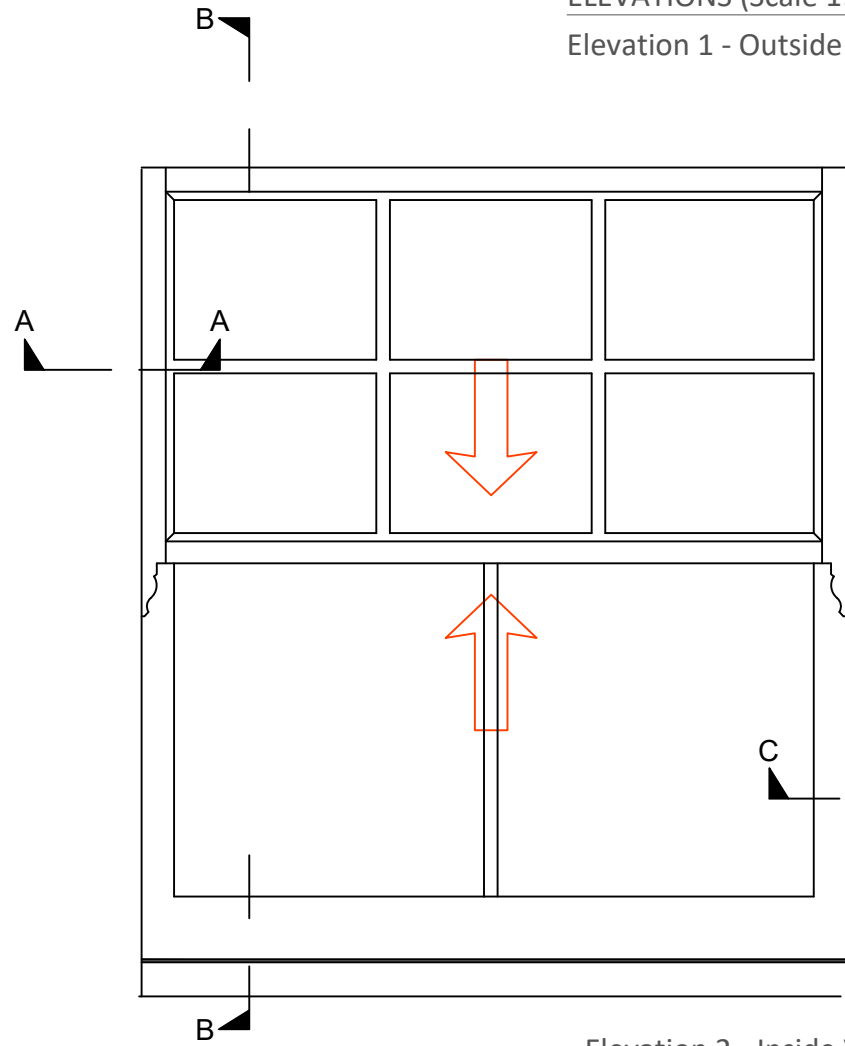
The Former Royal Oak, Ham Street, TW10 7HN

Specified Details:

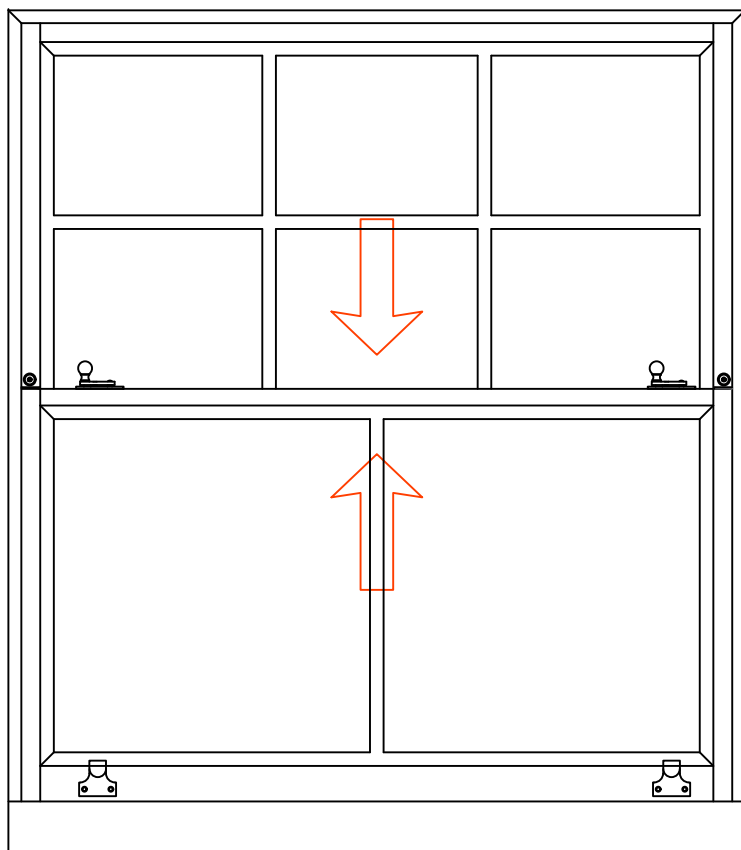
Discharge of Conditions – **NS01 Specified details required**



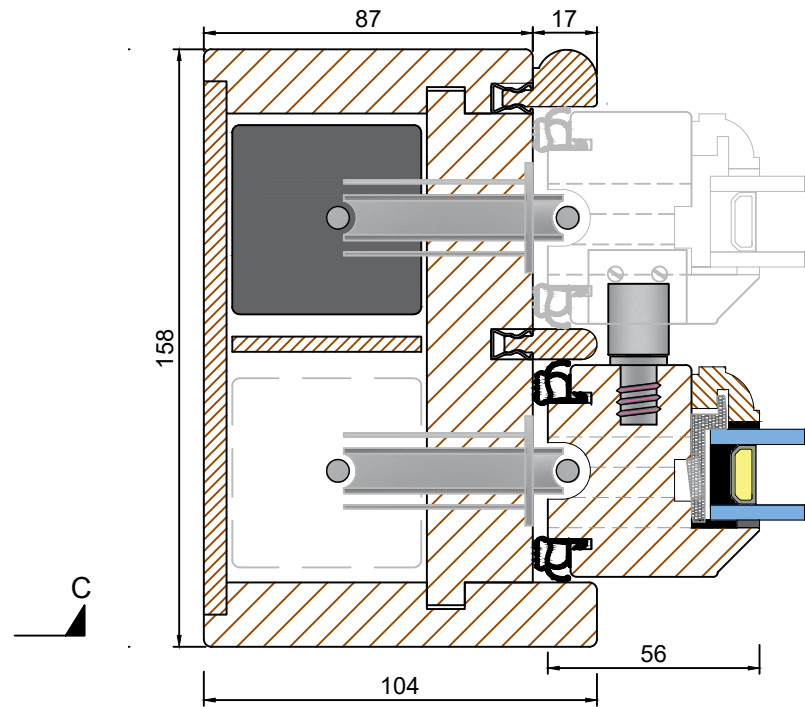
ELEVATIONS (Scale 1:10)
Elevation 1 - Outside View



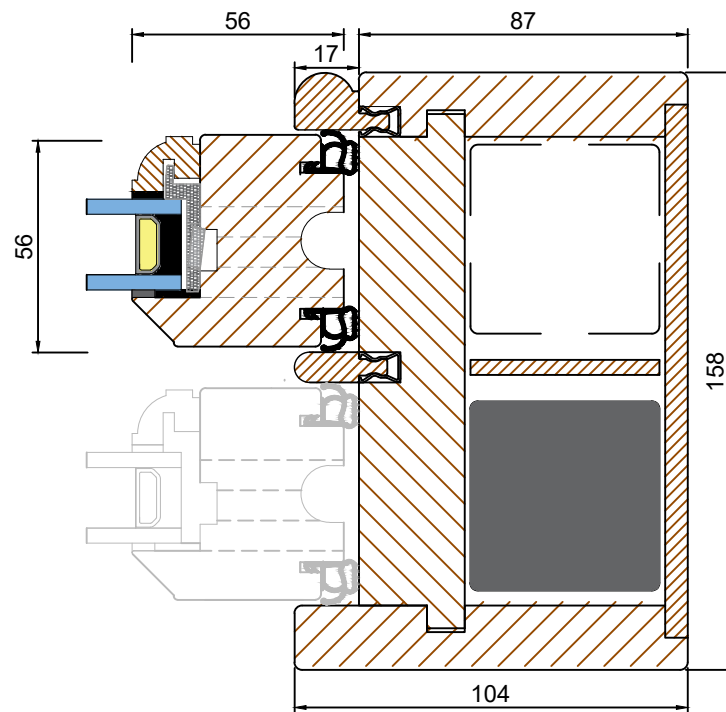
Elevation 2 - Inside View



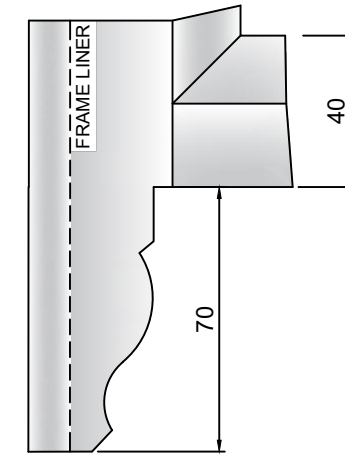
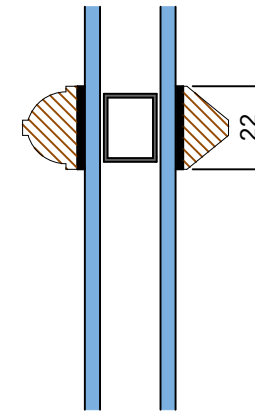
SECTIONS (Scale 1:2)
Section A-A - Top Sash Jamb



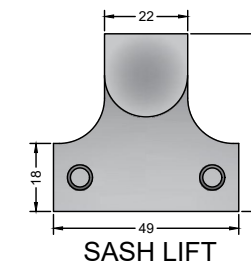
SECTIONS (Scale 1:2)
Section C-C - Bottom Sash Jamb



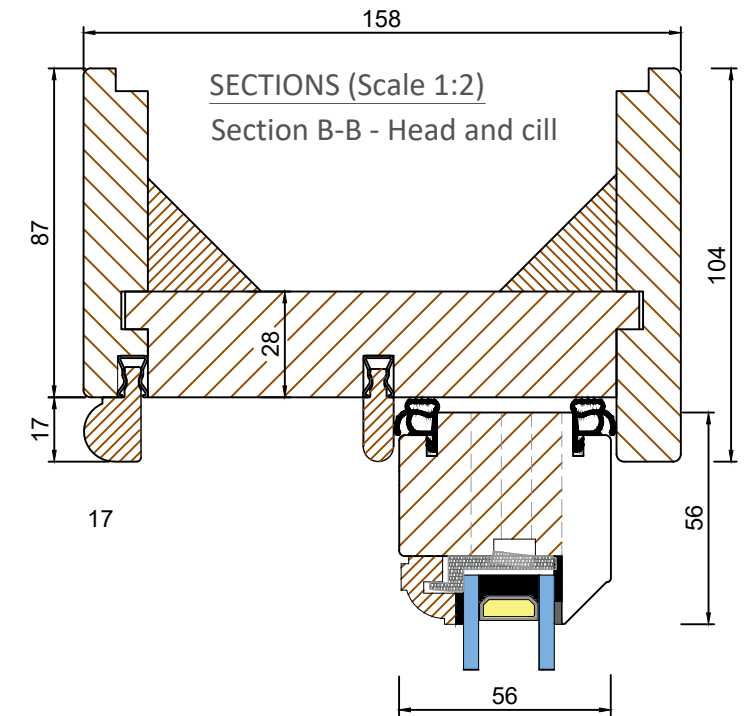
OVOLO BAR



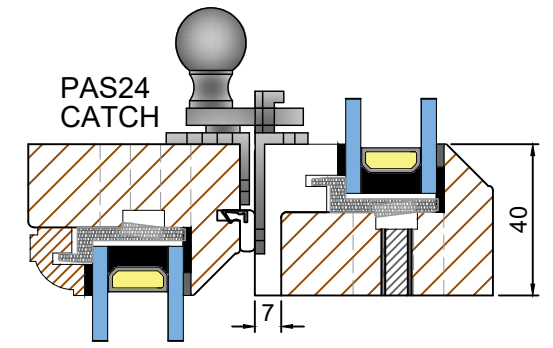
HORN C



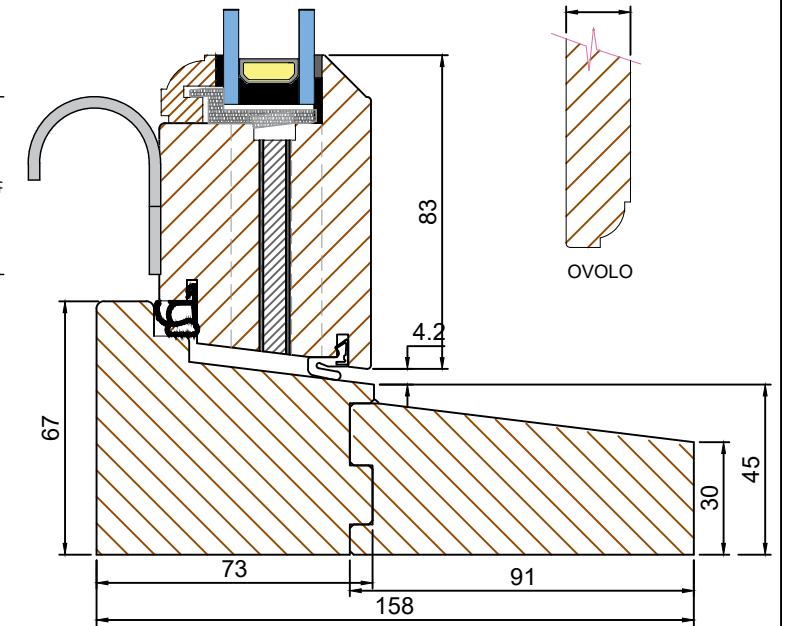
SECTIONS (Scale 1:2)
Section B-B - Head and cill



PAS24 CATCH



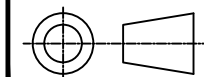
OVOLO



TOLERANCES
UNLESS OTHERWISE SPECIFIED

ALL DIMENSIONS IN MM
ALL LINEAR DIMENSIONS ± 0.4
ALL ANGLE DIMENSIONS $\pm 0.5^\circ$
BREAK ALL SHARP EDGES 0.5

THIRD ANGLE PROJECTION



UNIT 9
CHANCERY GATE BUSINESS CENTRE
RED LION ROAD, SURBITON
KT6 7RA
TEL: 0208 397 8636
EMAIL: HELLO@NINE-ZERO.CO.UK
WEB: https://www.nine-zero.co.uk

TITLE
TRADITIONAL RANGE
DOCUMENT Q COMPLIANT

DRAWN BY: OTD
DATE DRAWN: 28JUN21

DRAWING No:
NZ-02-01

BOX SASH WINDOW
24mm GLAZING

SCALE
N/A

REV:

B

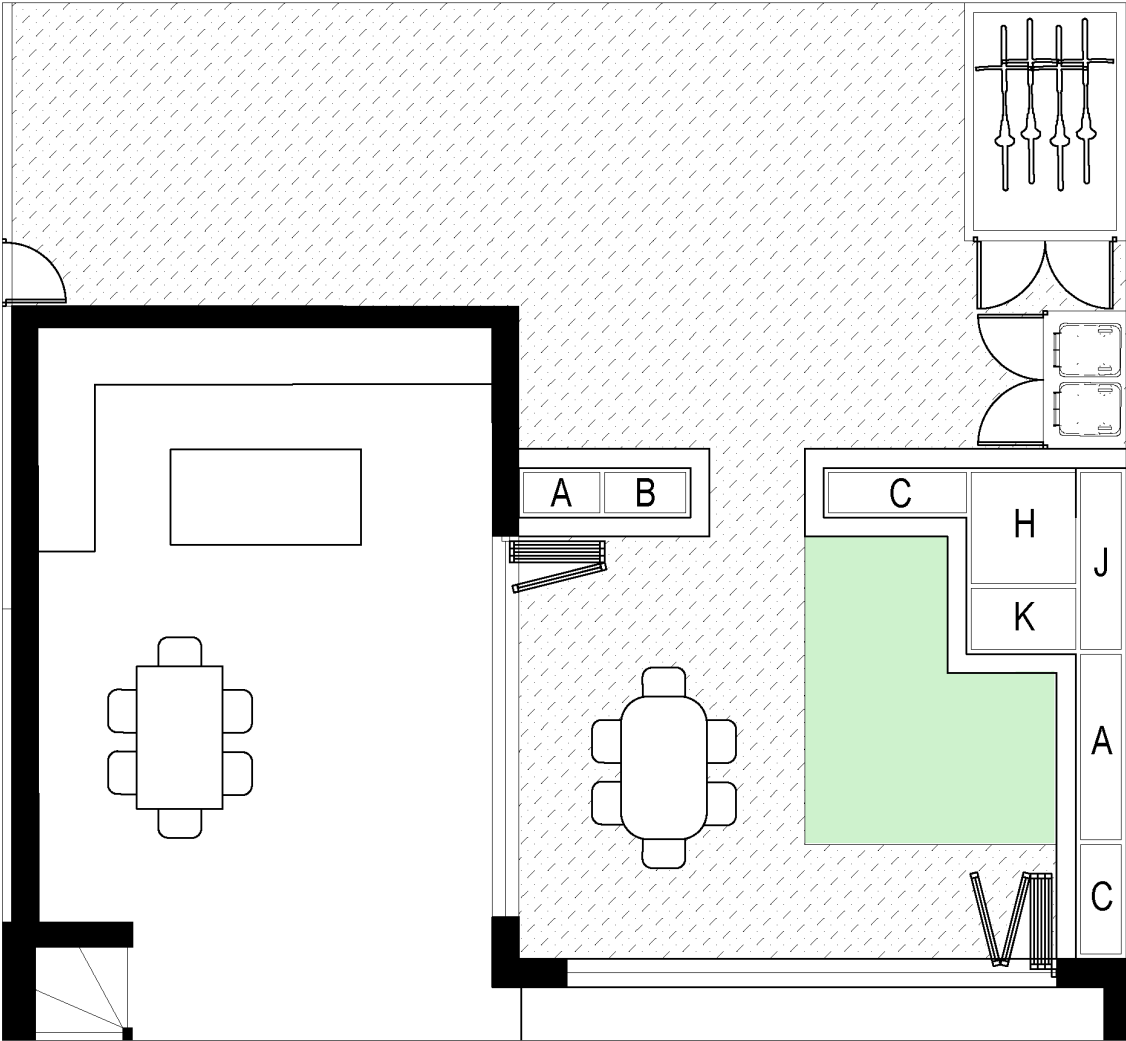
Tolerances: All tolerances are to NINE-ZERO Standard Tolerance definitions (Request technical document for more detail) unless stated on the drawing.
© NINE-ZERO. All rights reserved. No part of this drawing may be reproduced without the permission of NINE-ZERO.
ALL MEASUREMENTS ARE FINISHED DIMENSIONS IN MM. DO NOT SCALE DRAWING!

The Former Royal Oak, Ham Street, TW10 7HN

Hard & Soft Landscaping Plan:

Discharge of Conditions – NS04 – Hard and Soft Landscaping

Hard & Soft Landscaping Plan






Permeable resin bound surfacing in colour Nordic grey

Grass

Courtyard Surface

Permeable resin bound surfacing in colour Nordic grey



	Planting Plans	Pot Size	Example
A	Lavandalu ang. Munstead	3 Lts	
B	Nandina domestica Obsessed	3 Lts	
C	Saracocca Confusa	3 Lts	

	Planting Plans	Pot Size	Example
H	Philadelphus Belle Etoile	3 Lts	
J	Spiraea Japonica Little Princess	10 Lts	
K	Weigela 'Red Prince'	10 Lts	