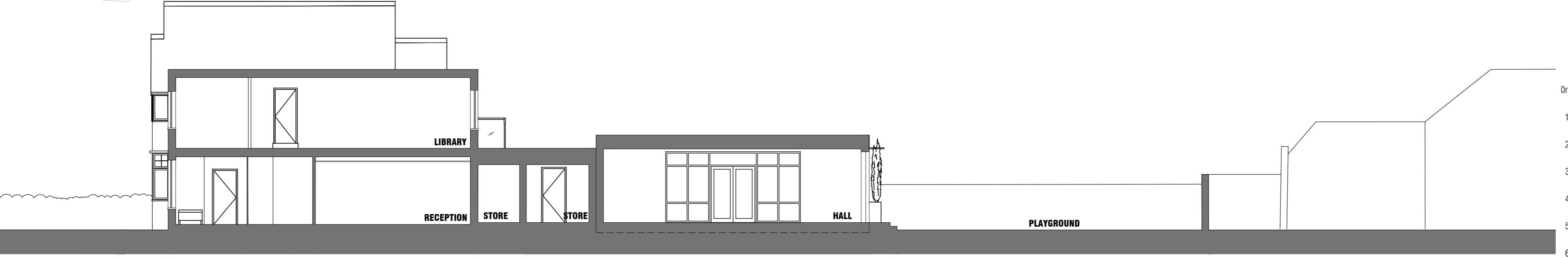
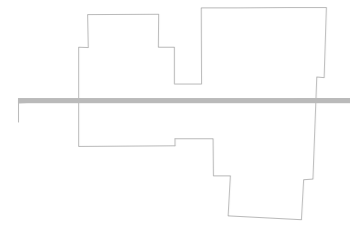
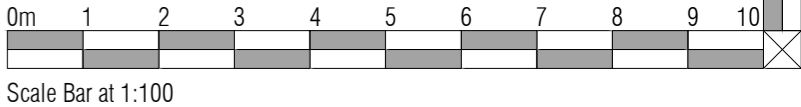


EXISTING SITE SECTION A



PROPOSED SITE SECTION A

REV B - STORE ENLARGED - 09.11.23
 REV A - EXTENSION REDUCED BY 2M, HALL BI-FOLD DOORS AMENDED TO DOUBLE DOORS
 AND HALL END MODULE REDUCED IN SIZE - 13.03.23



COPYRIGHT: This drawing is copyright and may not be altered, reproduced or used other than for the Contract Works for which it is issued without the written permission of squires and brown ltd.

 Chartered Practice	squires and brown architects and building surveyors	MALLORY HOUSE GOOSTREY WAY MOBBERLEY CHESHIRE WA16 7GY 01565 872 288 info@squiresandbrown.co.uk www.squiresandbrown.co.uk
		16 August, 2022 1:100 @ A2

Hampton Pre-Prep School Pre-Prep Hall	Planning Application	1829	Site Section A A-200	Rev B