



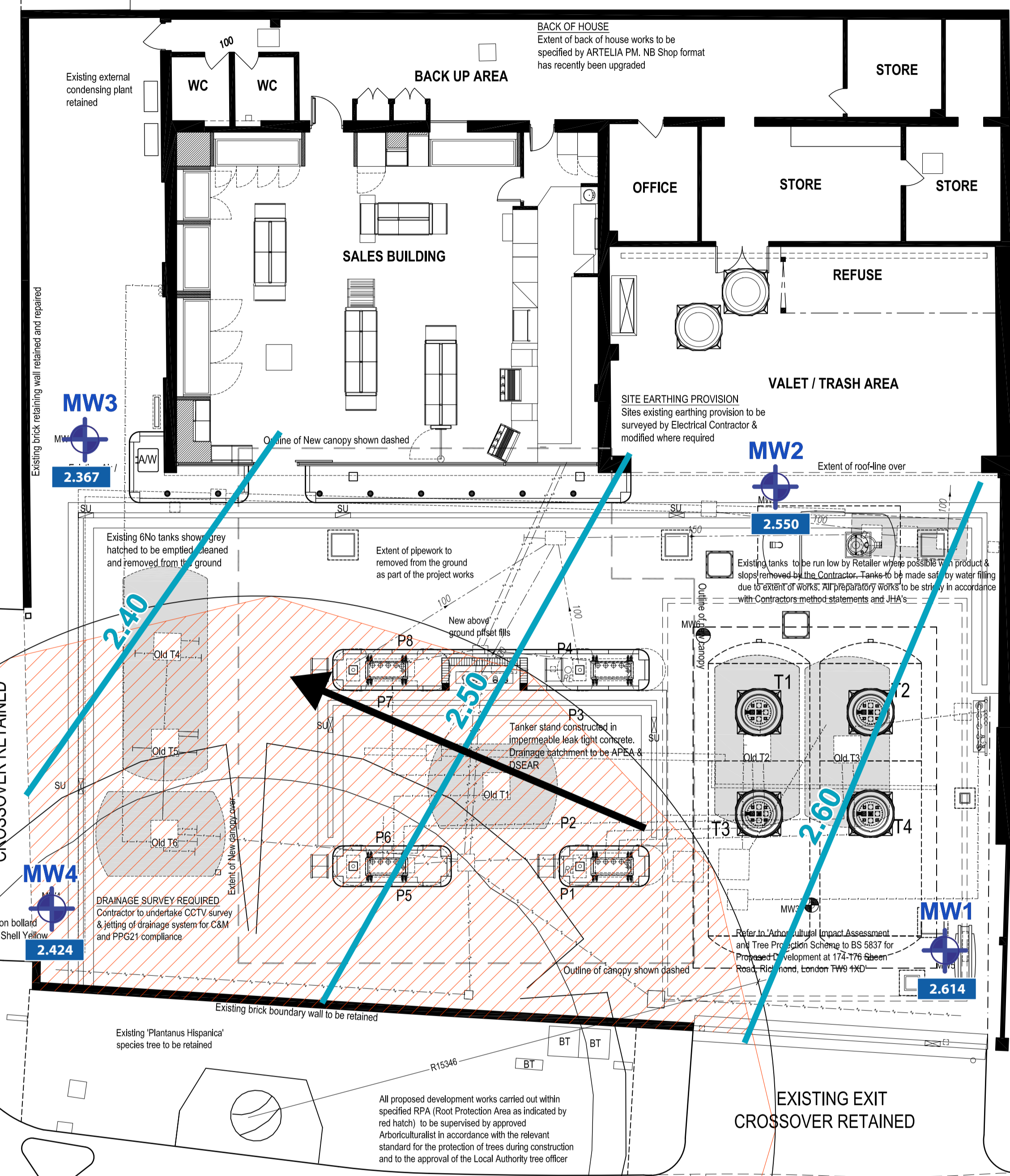
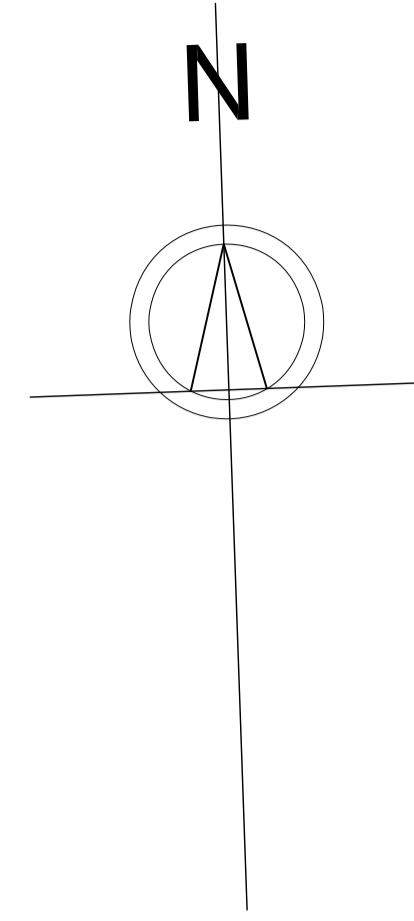


**GRENA ROAD**

**SHEEN ROAD**

KEY

-  MONITORING WELL LOCATION
-  2.424 GROUNDWATER ELEVATION
-  GROUNDWATER CONTOUR (m ASD)
-  INFERRED GROUNDWATER FLOW DIRECTION

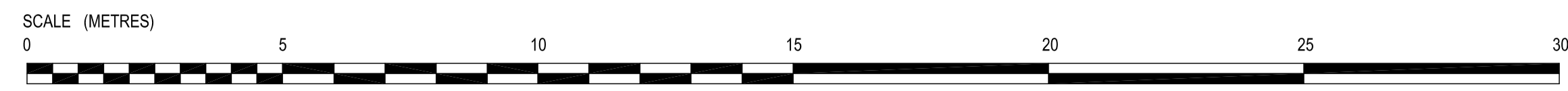


**IMPORTANT CONTRACTOR INFORMATIVE**

EXISTING LONDON PLANE TREE HAS A PRESERVATION ORDER AND ANY WORKS CARRIED OUT WITHIN ITS VICINITY NEED TO CONDUCTED IN ACCORDANCE WITH THE PLANNING CONSENT UNDER THE DIRECTION OF THE APPOINTED SPECIALIST CONSULTANT. ALL CONSTRUCTION METHODOLOGY TO FOLLOW THE GUIDANCE SET-OUT IN BS5837 - PROTECTION OF TREES (DURING CONSTRUCTION)

WHERE DOUBT ARISES CONTRACTOR TO CONSULT THE ARBORICULTURLIST WHO IS INSTRUCTED TO LIAISE WITH THE LOCAL AUTHORITY TREE OFFICER.

RED HATCHING INDICATES THE AREA WHERE THE EXISTING ROOT SYSTEM OF THE TREE MUST BE PRESERVED ANY EXCAVATION TO BE CARRIED OUT WITHIN THIS REGION MUST BE CONDUCTED IN ACCORDANCE WITH THE ASSOCIATED PLANNING CONSENT



CONSULTING ENGINEERS

**AECOM**

AECOM Infrastructure & Environment UK LTD,  
 St George's House, 3rd Floor  
 5 St George's Road, Wimbledon, London SW19 4DR  
 Tel: 020 7963 9800 Fax: 020 7963 9801

CLIENT  
 SHELL UK OIL LTD

PROJECT  
 SHELL BLACKHORSE  
 174 SHEEN ROAD, RICHMOND  
 LONDON, TW9 1XD

DRAWING TITLE  
 FIGURE 5-- INFERRED GROUNDWATER  
 FLOW DIRECTION

DRAWN AM	DESIGNED PA	CHECKED PA	APPROVED PA	DATE JUNE 2016
SCALE	DRG No. 60481674 / FIGURE 5			REV.