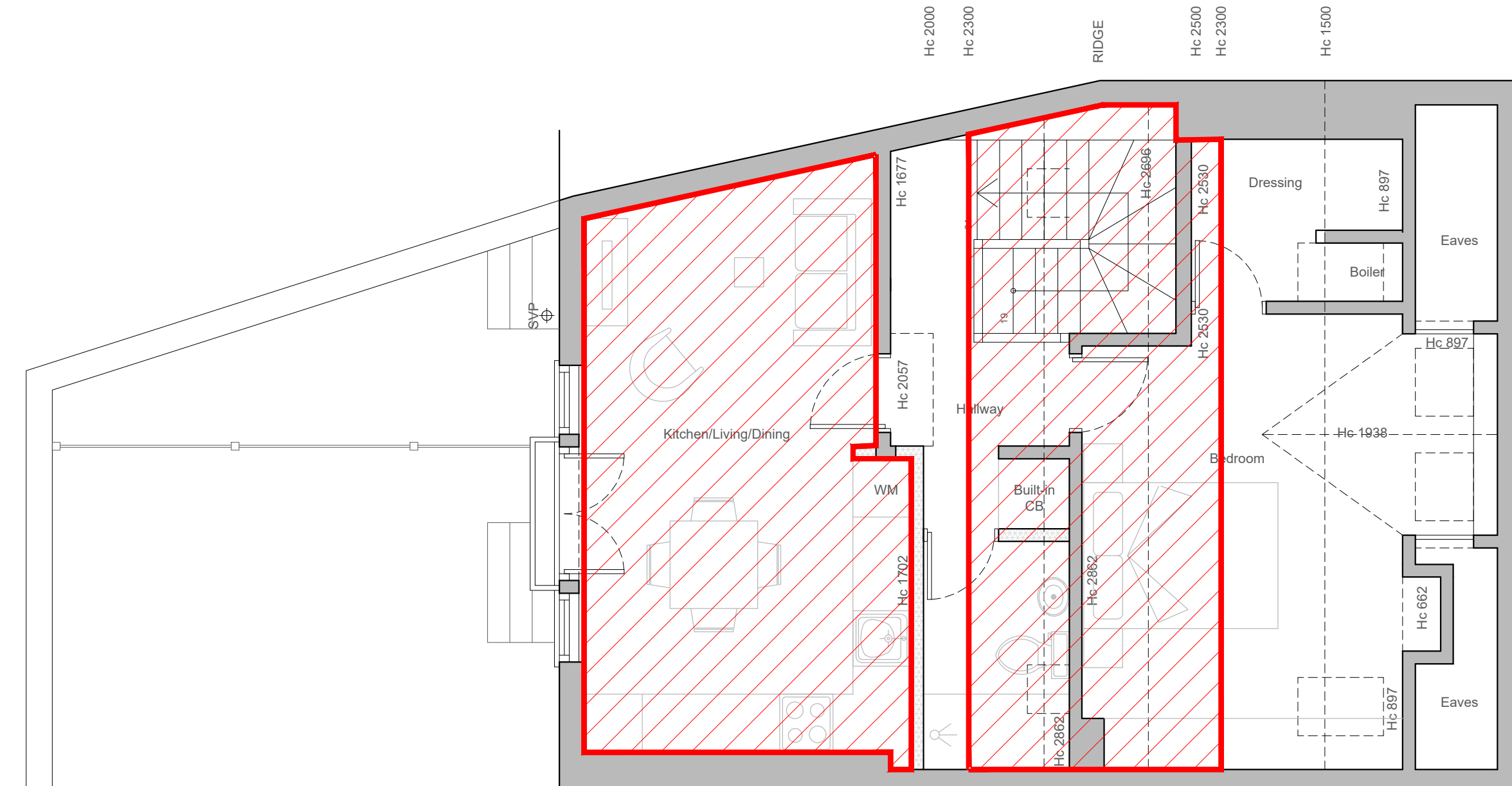


PROPOSED SECOND FLOOR

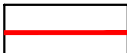
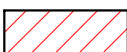
Flat B - Compliance to Technical housing standards - Nationally Described Space Standard

GIA FLAT B - Second Floor 47.86m²
1 Bedroom/1 bedspace (1 person)



FLAT B-Second floor 1 BEDROOM - 1 PERSON

Floor area calculation to comply with NDSS
New residential unit minimum - 39m²
75% of GIA needs to be above 2.3m = 29.25m²

 Floor area ceiling height above 2.3m is 36m² >29.75m²
 therefore complies to regulation

